

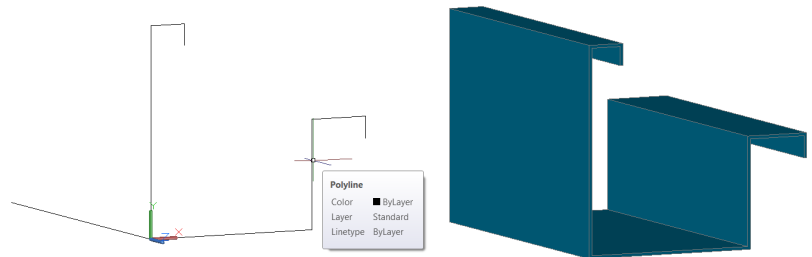
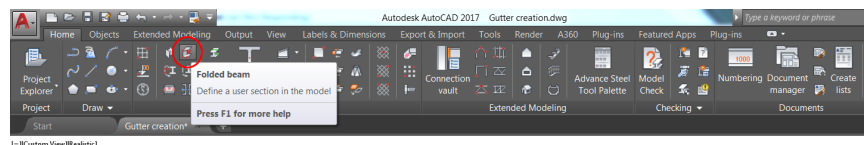
9

(*awesome*) things about Autodesk® Advance Steel

Autodesk® Advance Steel is a powerful 3D modeling tool for steel detailing software that is built on the familiar AutoCAD® platform*. Structural engineers, detailers, and fabricators use the software to help accelerate design, steel detailing, steel fabrication, and steel construction. Besides offering a comprehensive toolset for structural steel design, Advance Steel contains a number of features that can help you quickly and confidently detail your steel structures and prepare shop drawings for fabrication. Here are 9 (*awesome*) features that you can take advantage of to help streamline your steel detailing.

1 It takes almost no time at all to create a folded element from a simple polyline

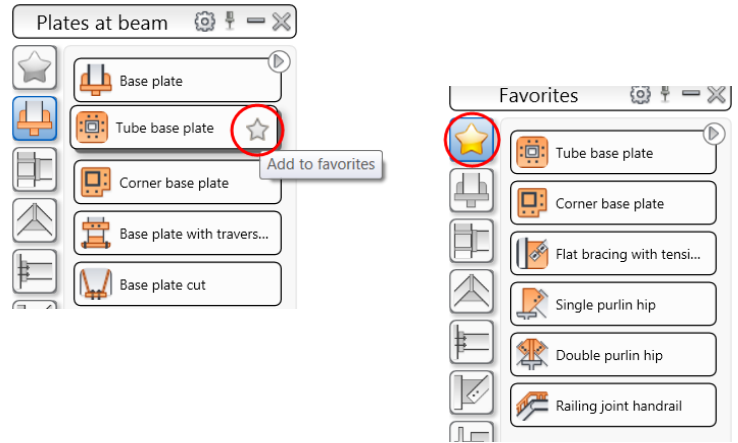
In Autodesk Advance Steel, it's possible to start from a polyline and quickly create the folded object with the folded beam command. Once created, it can be unfolded both on its workshop drawing and also within the CN files for CNC machines at the workshop.



*Note: To use Advance Steel, you must subscribe to Autodesk® AutoCAD® software.

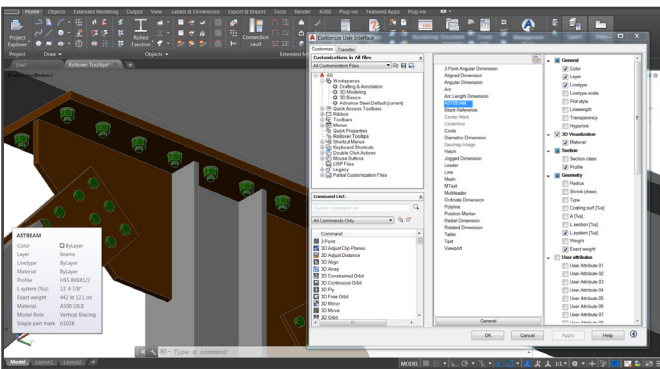
2 Advance Steel allows you to easily access your most frequently used steel connections

If you select the star at the end of a steel connection in the Connection Vault, it is automatically placed in a Favorite group. You can then have your preferred steel connections all available in the same location. This allows you to avoid navigating through the different categories to find the steel connection that you are looking for and helps save a ton of time!



3 You don't have to double-click on an item to view its properties

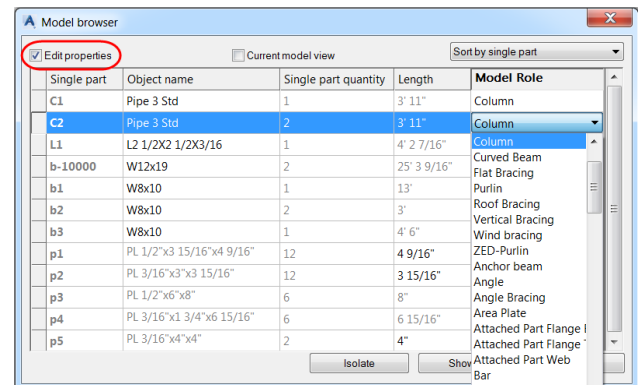
You can view properties in the model by hovering over them in the model, you just need to configure rollover tooltips in the Customer User Interface dialog and decide which properties you want to see.



Learn how. [Click to go to the video.](#)

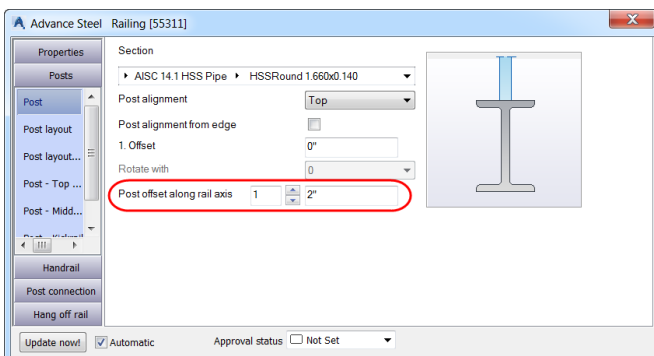
4 There are different ways to select items in the Advance Steel model

In the Model Browser you can use the Isolate button to display objects from the selected lines. This method can help you quickly edit an element's properties.



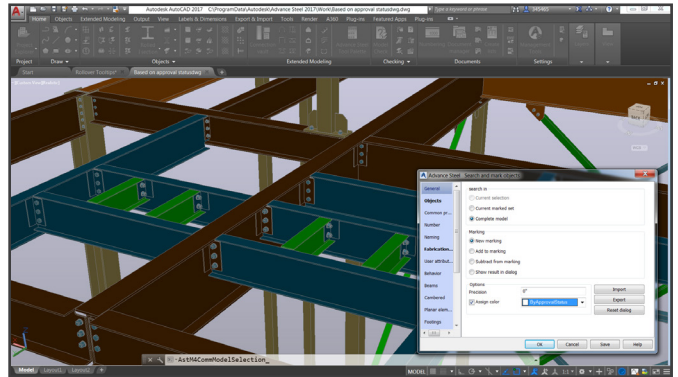
5 Move your railing posts individually

Once your straight (or curved) railing is inserted on your supporting beams, you can move each post individually by entering a positive (or negative) value to "Post offset along rail axis" option.

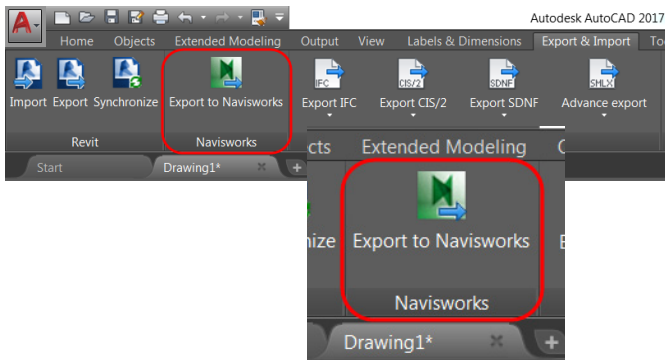


6 Color any objects in the Advance Steel model based on approval status.

Advance Steel offers the possibility to create your own approval status in the Management Tools and make them available for Advance Steel objects, steel connections, and for drawings in the Document Manager. Check out this video if you want to know more.



Learn how. Click to go to the video.

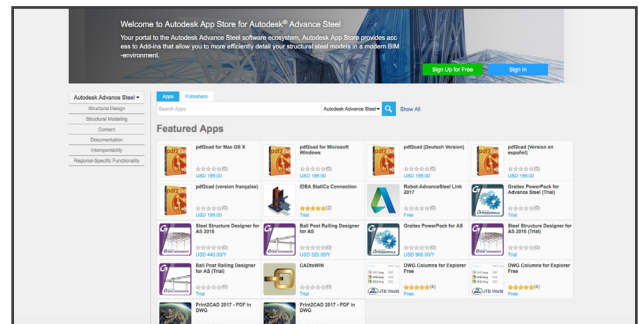


7 Load Advance Steel projects straight into Autodesk® Navisworks® software products

You can export 3D models as DWF™ files to open in Autodesk® Navisworks® software products. Just select the Export & Import tab in the Advance Steel menu, and press the Export to Navisworks icon in order get the Advance Steel model automatically loaded in Navisworks.

8 Advance Steel now has an App Store!

The Autodesk® App Store is your portal to the Advance Steel software ecosystem. It provides access to Add-ins that allow you to more efficiently detail your structural steel models in a modern BIM-environment.



Click to visit the Autodesk® App Store.



Learn how. Click to go to the video.

9 You can see your model with 3D glasses!

With rendering in Autodesk 360™ webservice, you can take advantage of virtually infinite computing power in the cloud to more quickly create high-resolution renderings and near-photorealistic stereo Panoramas of Advance Steel models for the Google Cardboard™ VR platform. Watch this video to learn more about this great feature and wow your clients (and friends)!



Autodesk, the Autodesk logo, AutoCAD, DWF, Navisworks, and Revit are registered trademarks or trademarks of Autodesk, Inc., and/or its subsidiaries and/or affiliates in the USA and/or other countries. All other brand names, product names, or trademarks belong to their respective holders. Autodesk reserves the right to alter product and services offerings, and specifications and pricing at any time without notice, and is not responsible for typographical or graphical errors that may appear in this document.

© 2016 Autodesk. All rights reserved.

