

The convergence of Design & Manufacturing

Freeing your creative potential and eliminating repetitive, non-value-add work

Callan Carpenter

VP, Global Named Accounts Sales, WWFO-Worldwide Field Operations







NTX 1000 HSC

DWG

SAFETY INSTRUCTIONS

1. Read the safety instructions carefully before operating the machine.

2. Do not touch the moving parts of the machine.

3. Do not use the machine if you are tired or under the influence of alcohol or drugs.

4. Do not use the machine if you are not qualified to do so.

5. Do not use the machine if you are not wearing the required personal protective equipment (PPE).

6. Do not use the machine if you are not wearing the required safety glasses.

7. Do not use the machine if you are not wearing the required ear protection.

8. Do not use the machine if you are not wearing the required hand protection.

9. Do not use the machine if you are not wearing the required foot protection.

10. Do not use the machine if you are not wearing the required head protection.

11. Do not use the machine if you are not wearing the required eye protection.

12. Do not use the machine if you are not wearing the required hearing protection.

13. Do not use the machine if you are not wearing the required respiratory protection.

14. Do not use the machine if you are not wearing the required skin protection.

15. Do not use the machine if you are not wearing the required clothing protection.

16. Do not use the machine if you are not wearing the required footwear protection.

17. Do not use the machine if you are not wearing the required headgear protection.

18. Do not use the machine if you are not wearing the required eyewear protection.

19. Do not use the machine if you are not wearing the required earplugs protection.

20. Do not use the machine if you are not wearing the required gloves protection.

21. Do not use the machine if you are not wearing the required shoes protection.

22. Do not use the machine if you are not wearing the required helmet protection.

23. Do not use the machine if you are not wearing the required goggles protection.

24. Do not use the machine if you are not wearing the required earmuffs protection.

25. Do not use the machine if you are not wearing the required respirator protection.

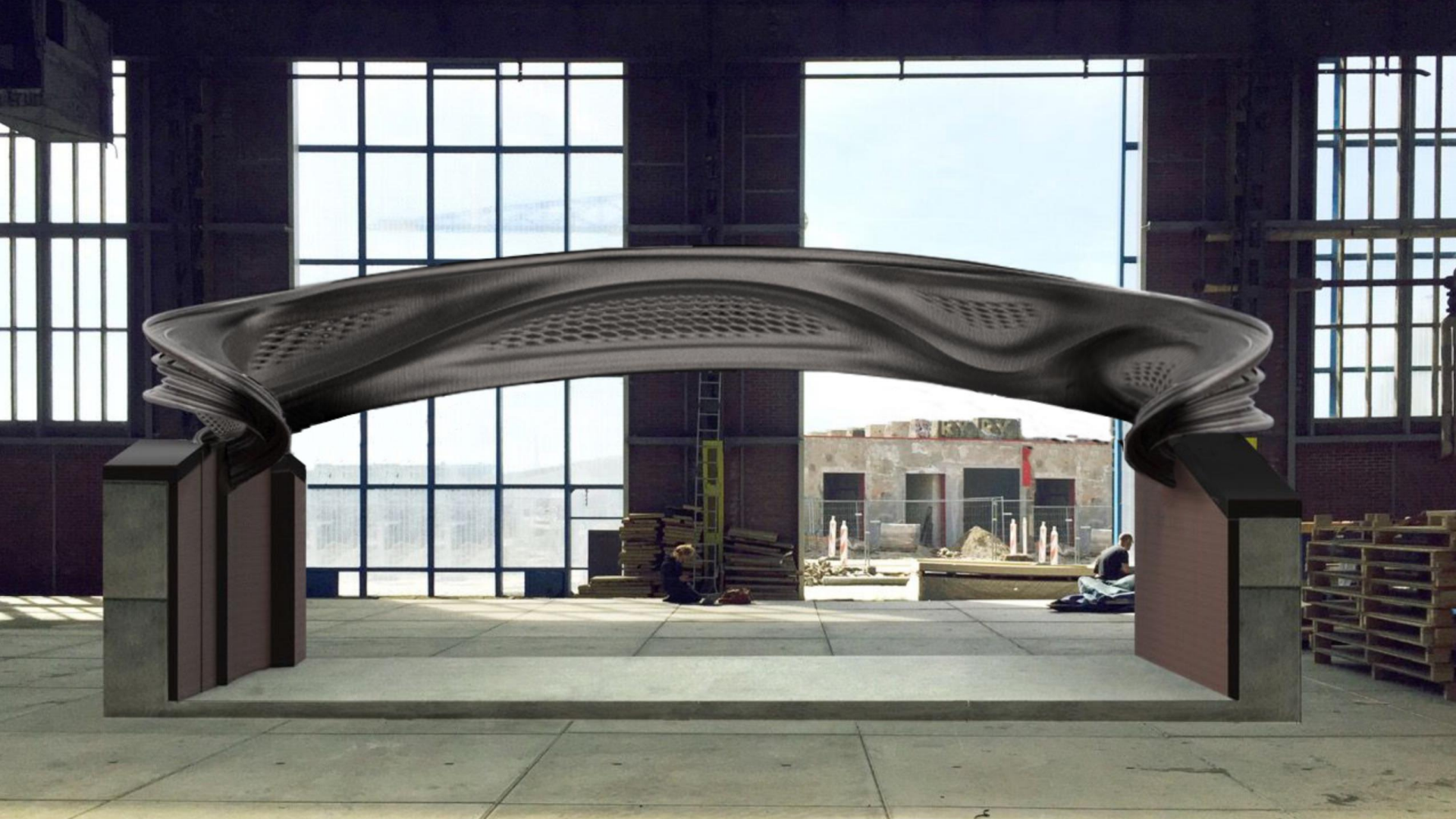
26. Do not use the machine if you are not wearing the required protective suit protection.

27. Do not use the machine if you are not wearing the required protective hood protection.

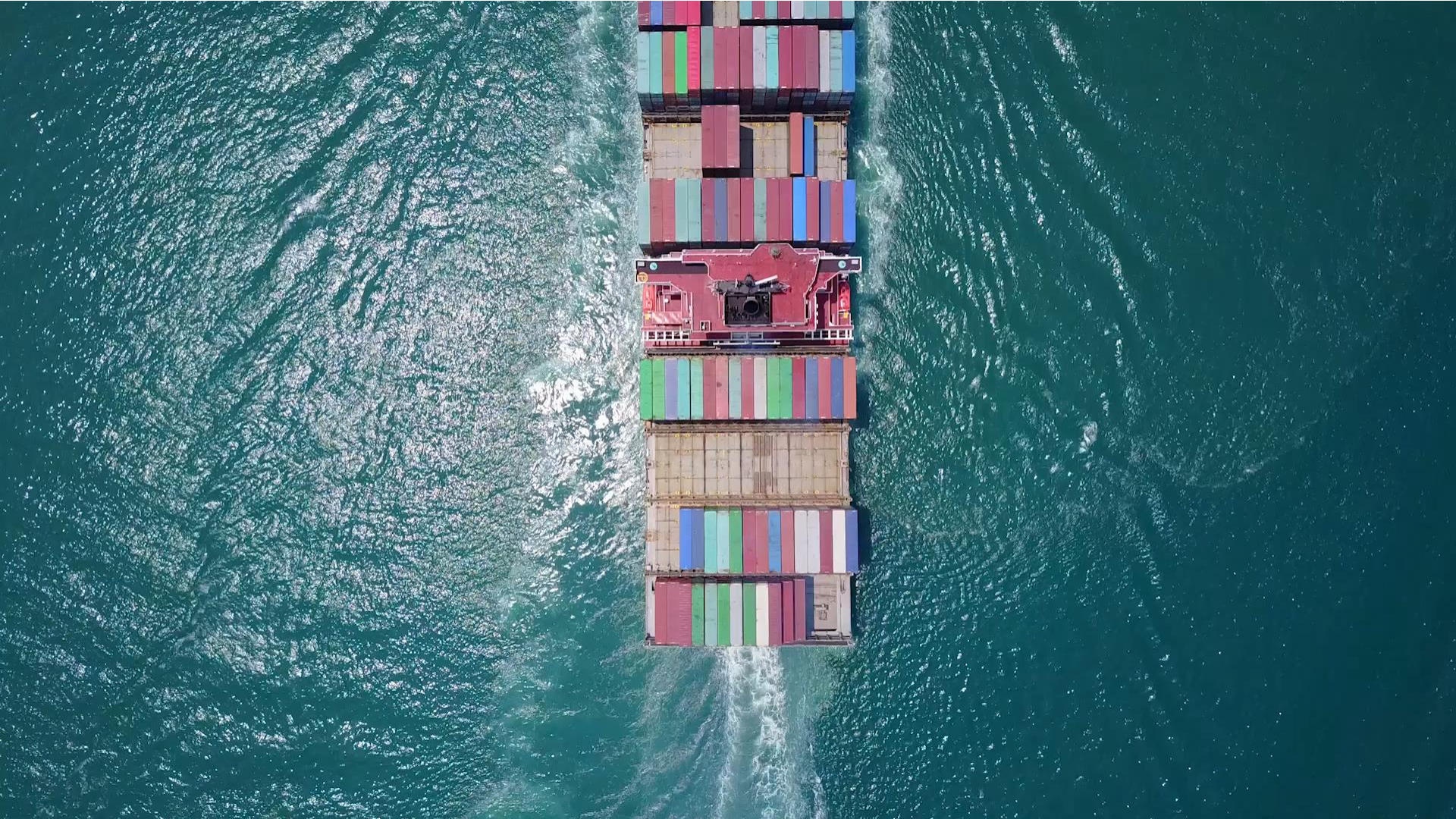
28. Do not use the machine if you are not wearing the required protective mask protection.

29. Do not use the machine if you are not wearing the required protective face shield protection.

30. Do not use the machine if you are not wearing the required protective helmet protection.







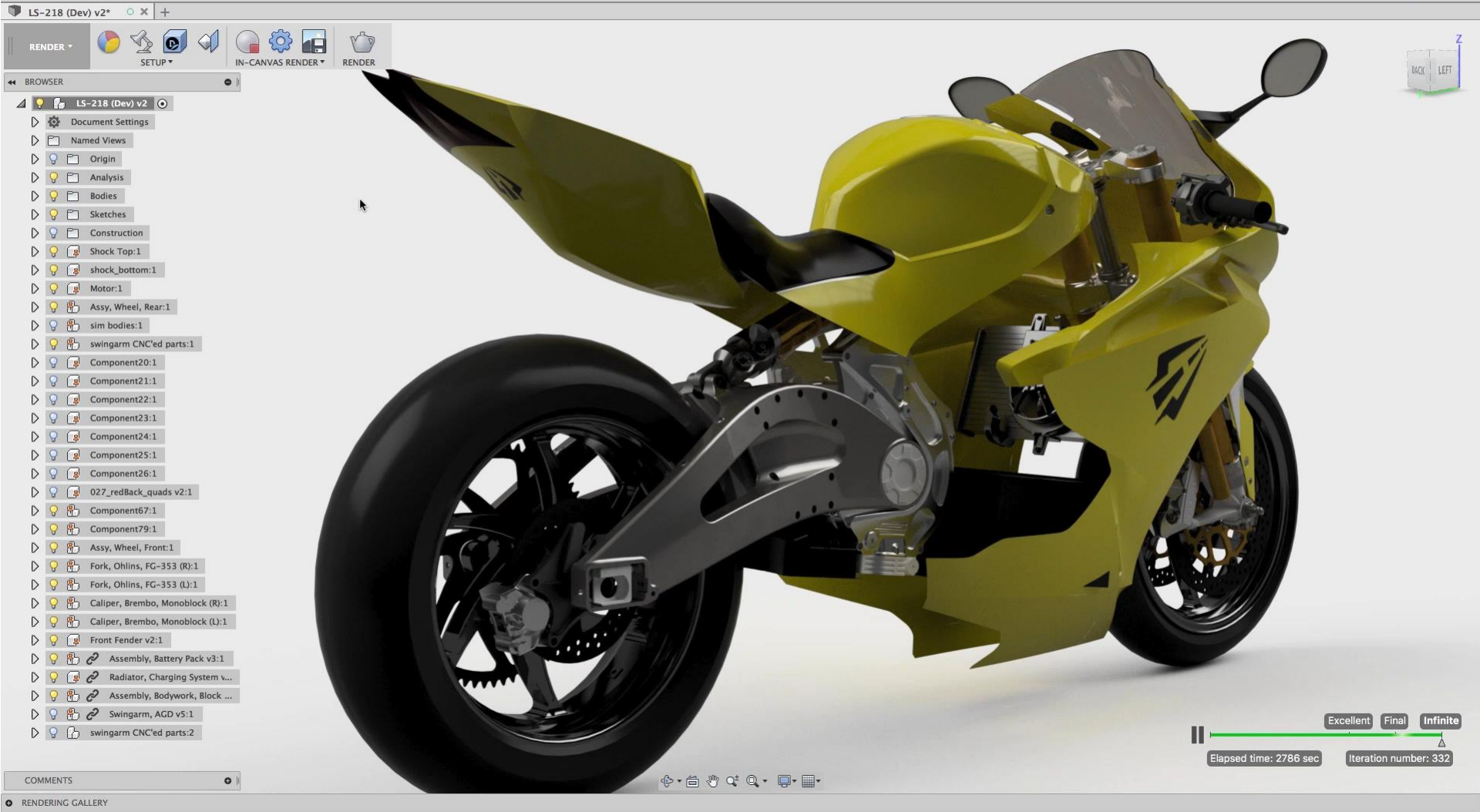


A high-angle, perspective view of a car manufacturing assembly line. The scene is filled with yellow robotic arms (KUKA) positioned on both sides of a central conveyor belt. Several car chassis are visible, moving along the line towards the background. The factory floor is industrial, with various pipes, cables, and structural elements visible. The lighting is bright and even.

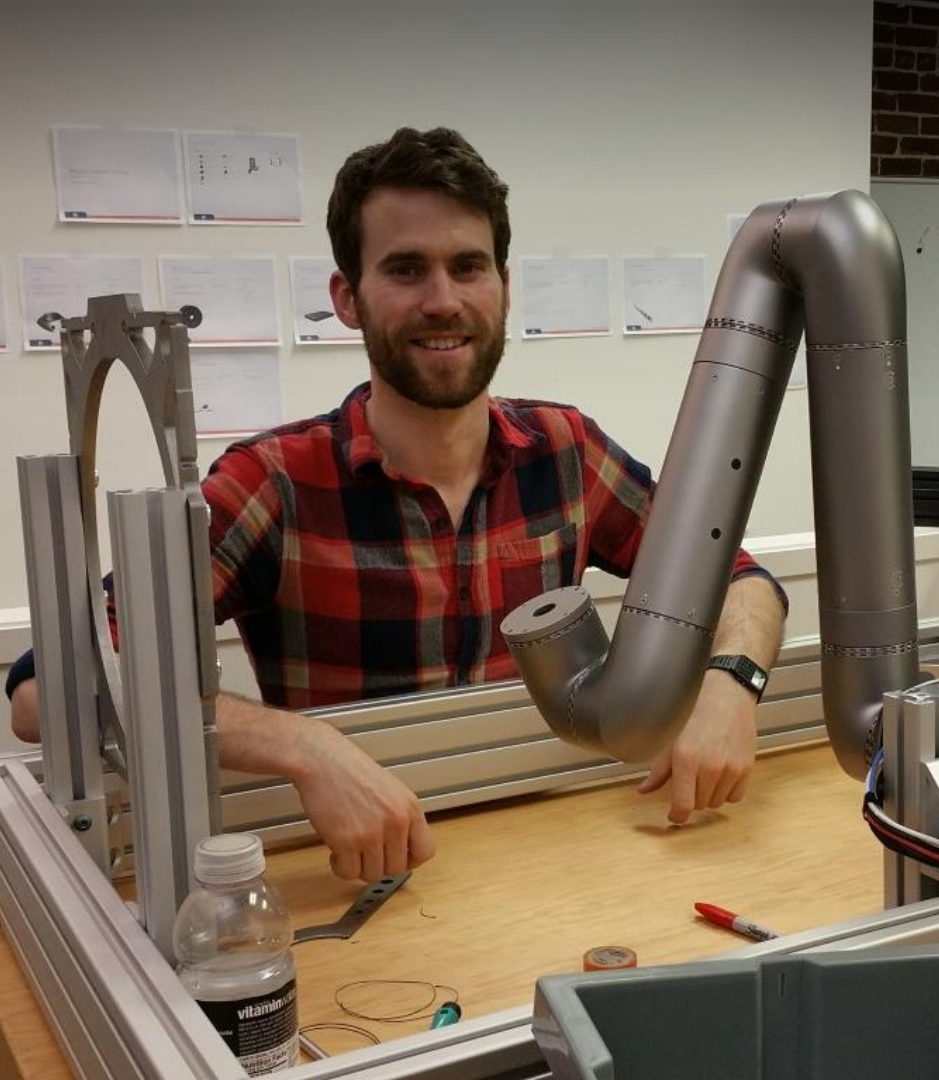
30%

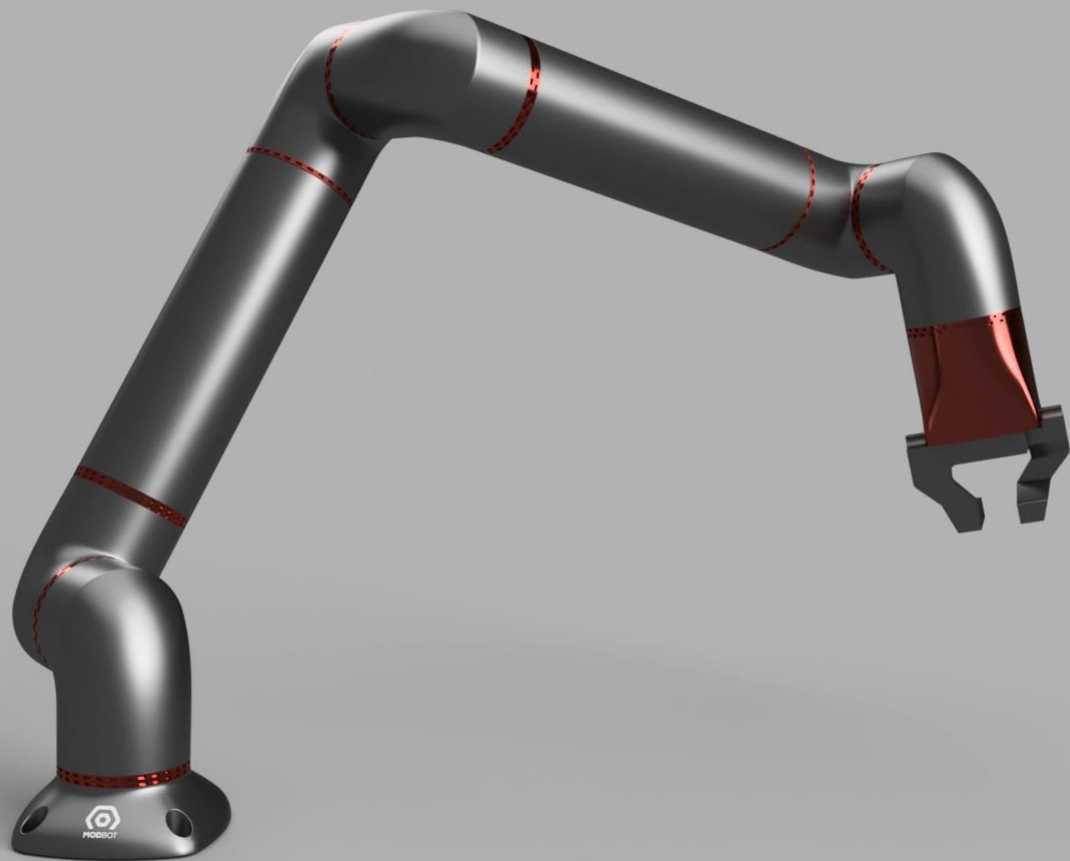
OF WORLDS WORK WILL BE
AUTOMATED BY 2030

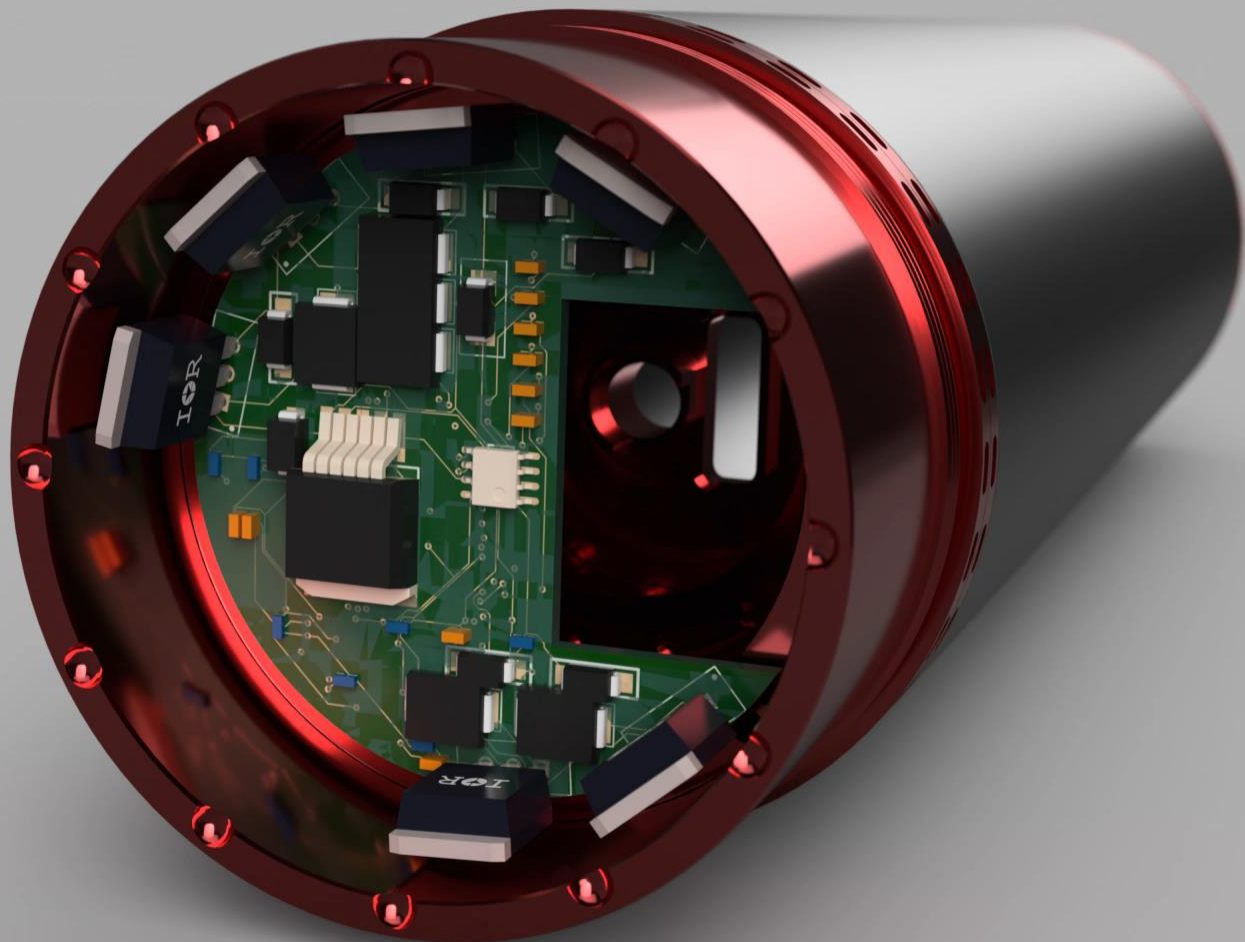


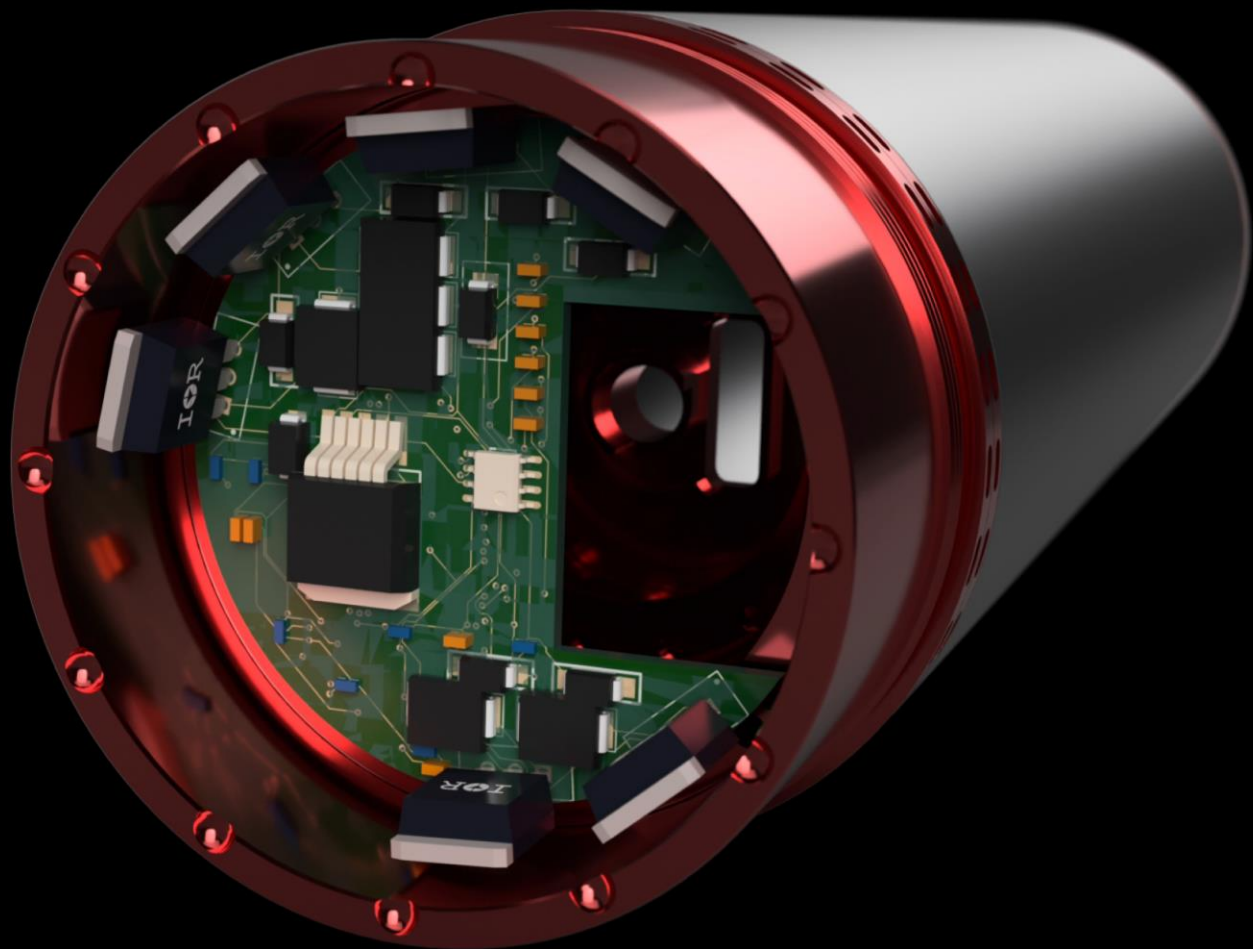


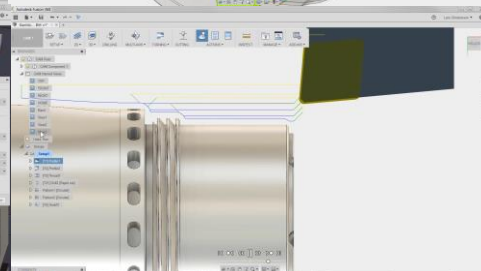
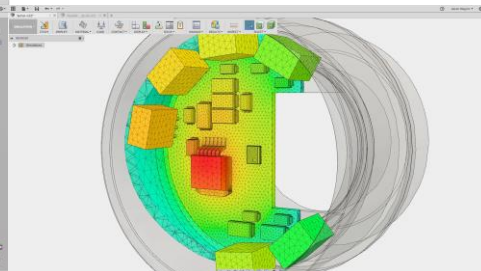
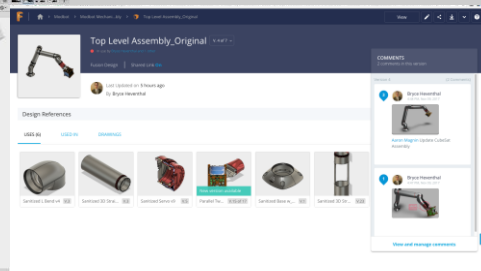
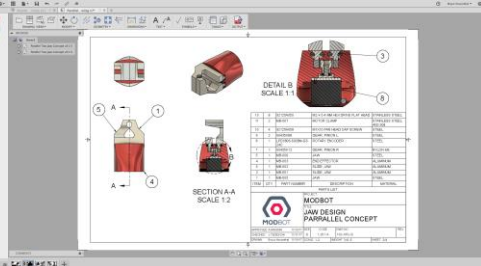


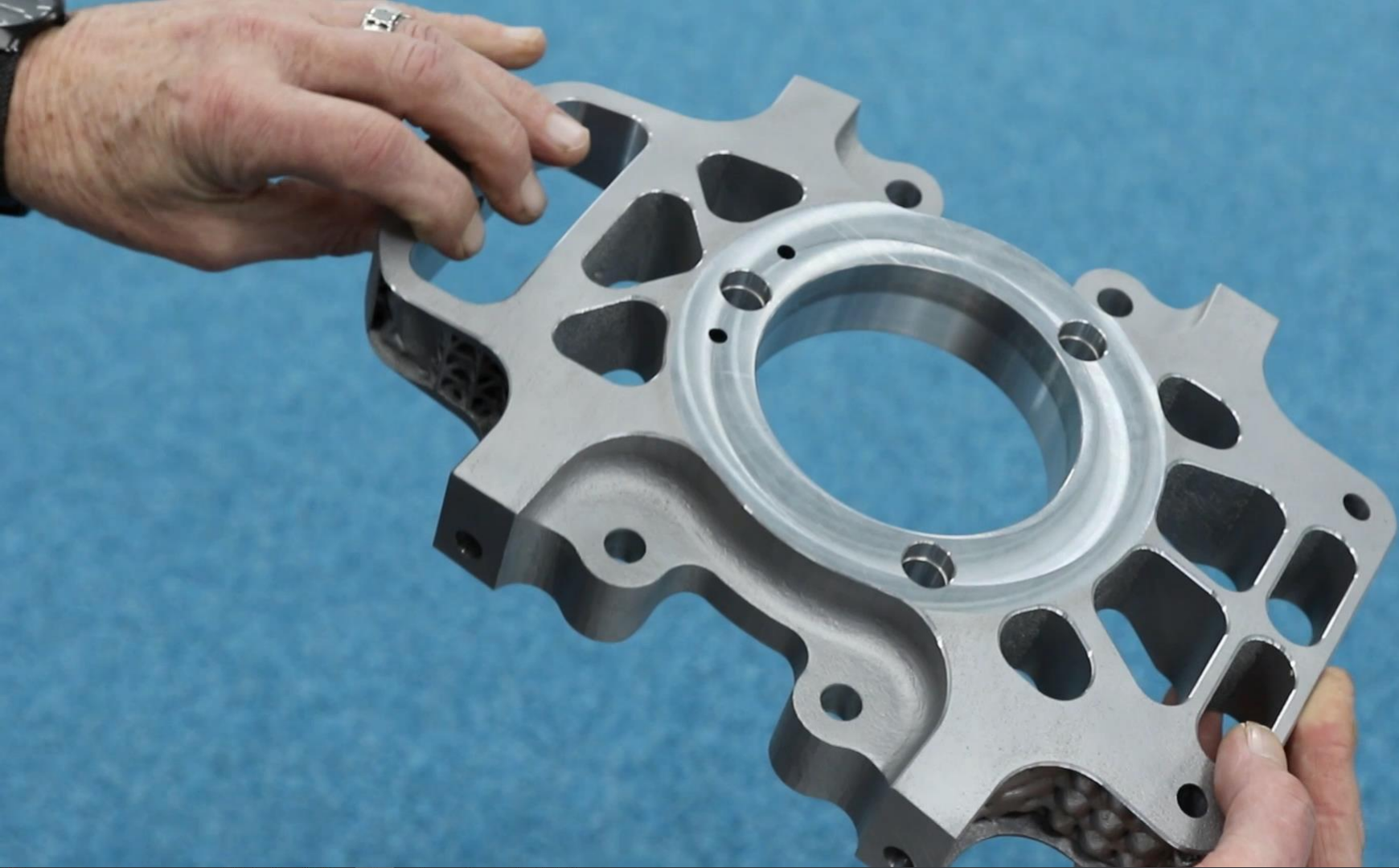


















Shop floor > Job sheets > 98898 > Run Blade 4 Op

Workstations Job sheets

Task 10
Run Blade 4 Op

Status
NOT STARTED

Quantity
1

Start

Workstation
Remote C50 UMT (Machining C...)

Estimated setup
000:00:00

Estimated execution
000:30:00

Checklist Details Components

Start the task to begin checking list items

- ☐ Check part is setup correctly
- ☐ Check tool is at home position
- ☐ Ensure blade 3 ops are finished
- ☐ Start the task for push button manufacturing



FUSION

PRODUCTION





AUTODESK®

Make anything™



AUTODESK®
FORGE

AUTODESK.

Robots on the Cloud

