



“The challenges of increasing architectural changes in the design process can be handled only with model-based MEP analysis. This is BIM enabled sustainable design for us.”

—Dipl.-Ing. Robert Huth
Chief Executive Officer
Huth Engineering GmbH

Collaboration Delivers Results

SOLAR-COMPUTER and Autodesk work together to deliver intelligent connections in order to help customers such as HUTH Engineering change the world.

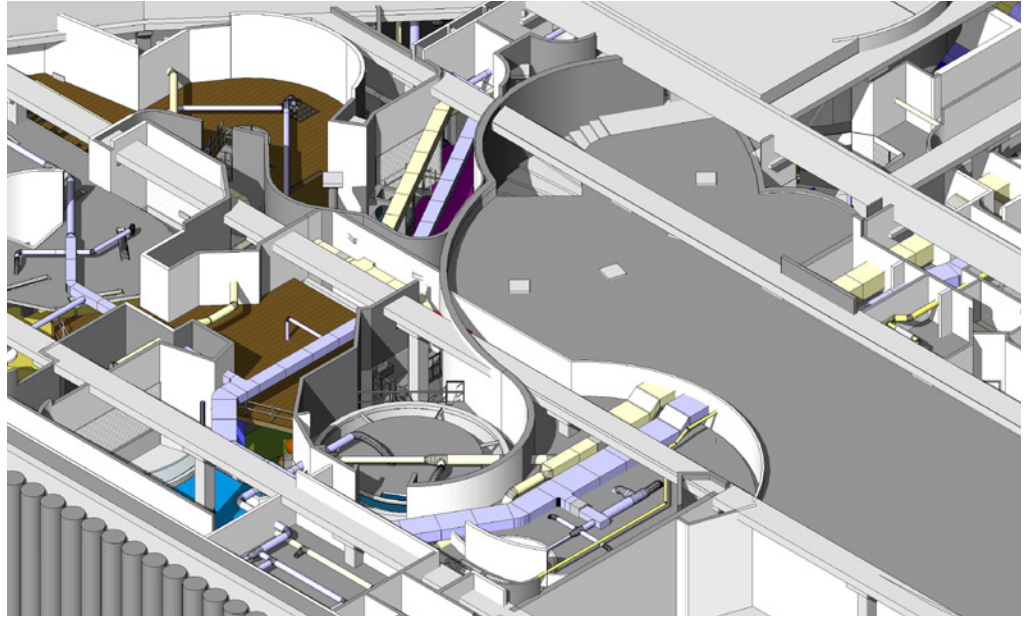


Image courtesy of Huth Engineering.

Intelligent connections

With more than 30 years of experience developing software solutions for building services analysis and engineering, German-based SOLAR-COMPUTER's solutions help designers and engineers quickly and efficiently design optimized energy efficient systems using Autodesk® Revit® MEP and Autodesk® Revit® Architecture software.

SOLAR-COMPUTER, the first strategic industry partner in Germany to provide a comprehensive link to Autodesk Revit, has been chosen by many engineers interested in Building Information Modeling (BIM) and sustainable design. For example, mechanical and plumbing designers and engineers use the combined offering of Autodesk Revit and SOLAR-COMPUTER software to perform more accurate calculations based on local design standards in the DACH region.

Using information inherent within the Revit model, engineers can optimize designs with accurate calculations conducted with the SOLAR-COMPUTER solutions. With design and analysis integrated from the earliest stages, building systems projects can benefit from performance based analysis.

Performance in action: Huth Engineering, GmbH

Huth Engineering is an engineering company specializing in designing building equipment. The company operates nationally and internationally, and is primarily focused on leisure and entertainment facilities as well as industrial facilities. In order to deliver projects on time and within budget, and to provide clients with excellent results, it is essential for the company to use solutions that are integrated and support cross team collaboration.

Huth Engineering has used Autodesk solutions for more than nineteen years, and has now incorporated SOLAR-COMPUTER software for enhanced design processes and outstanding results. As an analysis provider, SOLAR-COMPUTER software provides a direct link to Autodesk Revit; together, the solutions allow for faster and easier data exchange to help support sustainable design. When designing with Autodesk Revit and using SOLAR-COMPUTER's software for analysis, Huth Engineering can carry out calculations for LEED® certification, helping to meet owner requirements and to comply with local standards.

Case Study: SEA LIFE Rome Aquarium

Among Huth Engineering's most successful recent projects is the SEA LIFE Rome Aquarium, which holds over 1,000,000 liters of water, houses more than 5,000 creatures and is Italy's first 360° Ocean Tunnel. Huth Engineering led the project's MEP design work, including initial conceiving and the detailed engineering.

Huth Engineering guided the project through a fast-track construction schedule and worked closely with the project's architects. Using an intelligent model based approach, the architects and engineers could more easily work together in one model, helping to coordinate their efforts. Employing Revit and SOLAR-COMPUTER software's calculation applications, the design team could easily make modifications—such as easily and automatically recalculating all room sizes to support design changes—and be confident in the parametric change engine, which allows for a change anywhere to be change everywhere, thus keeping design and documentation coordinated and consistent. Walk-throughs and elevations were created using the powerful visualization tools of Autodesk Revit, helping project owners immediately see the impact of design changes.

Throughout the project, SEA LIFE was pleased with the workflow and efficient coordination among all design partners. Many times during the design phase—and even during construction—the client introduced new ideas to improve the facility. Invariably, the design team could nimbly respond to modifications using Autodesk and SOLAR-COMPUTER solutions.

SOLAR-COMPUTER software is available in several languages, and its customers include a wide variety of engineering companies, general contractors, municipal utilities, architects, educational institutions, and all German building authorities.

Learn more:

www.solar-computer.de

www.autodesk.com

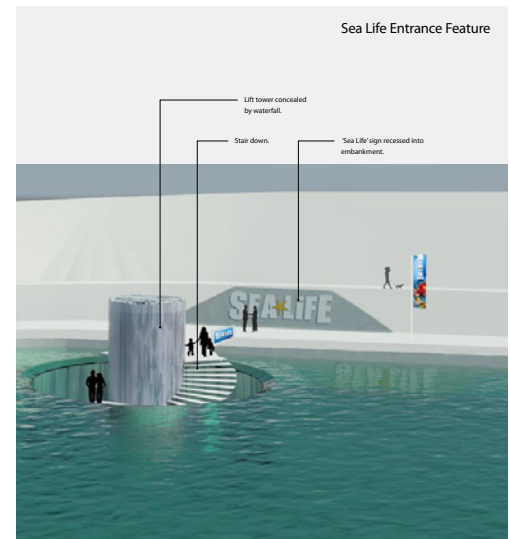


Image courtesy of Huth Engineering.



Image courtesy of Huth Engineering.

“Solar is the first Autodesk partner in Germany to provide the most complete link to Revit MEP. Solar analysis is the first choice for future-oriented customers interested in sustainability, BIM/Revit MEP, and integrated workflows.”

—Dipl.-Ing. Robert Huth
Chief Executive Officer
Huth Engineering GmbH