

TDIndustries: Exceptional Client Satisfaction through Integrated Engineering

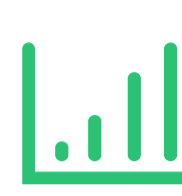
In a challenging and constantly moving engineering landscape, Dallas based mechanical engineering and plumbing subcontractor TDIndustries has stayed ahead of mounting pressures by embracing technology.

TDIndustries' adoption of integrated BIM workflows has ushered in a new era of competitive advantage for the firm.

The results



Project timelines slashed
Project scheduled reduced by up to 30%



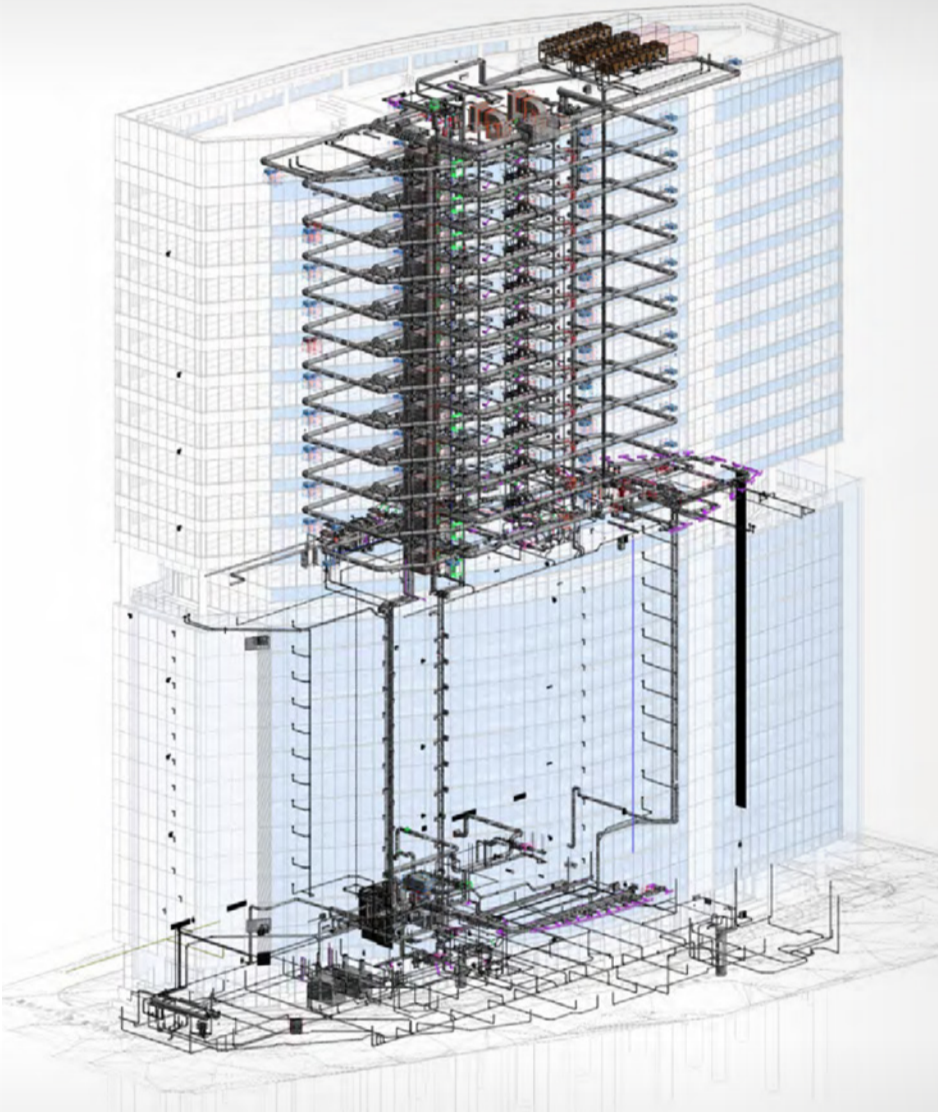
Higher price estimation efficiency
50% of resources have been reallocated to higher-value, client-centric activity



Winning more work
Demonstrating their commitment to client satisfaction at the bid stage is giving TDIndustries an edge

“ Already we can see a lot of return on investment. ”
Ken Luong, Project Manager, TDIndustries

How they did it TDIndustries' methodology



Coordinated data Getting teams to speak the same language

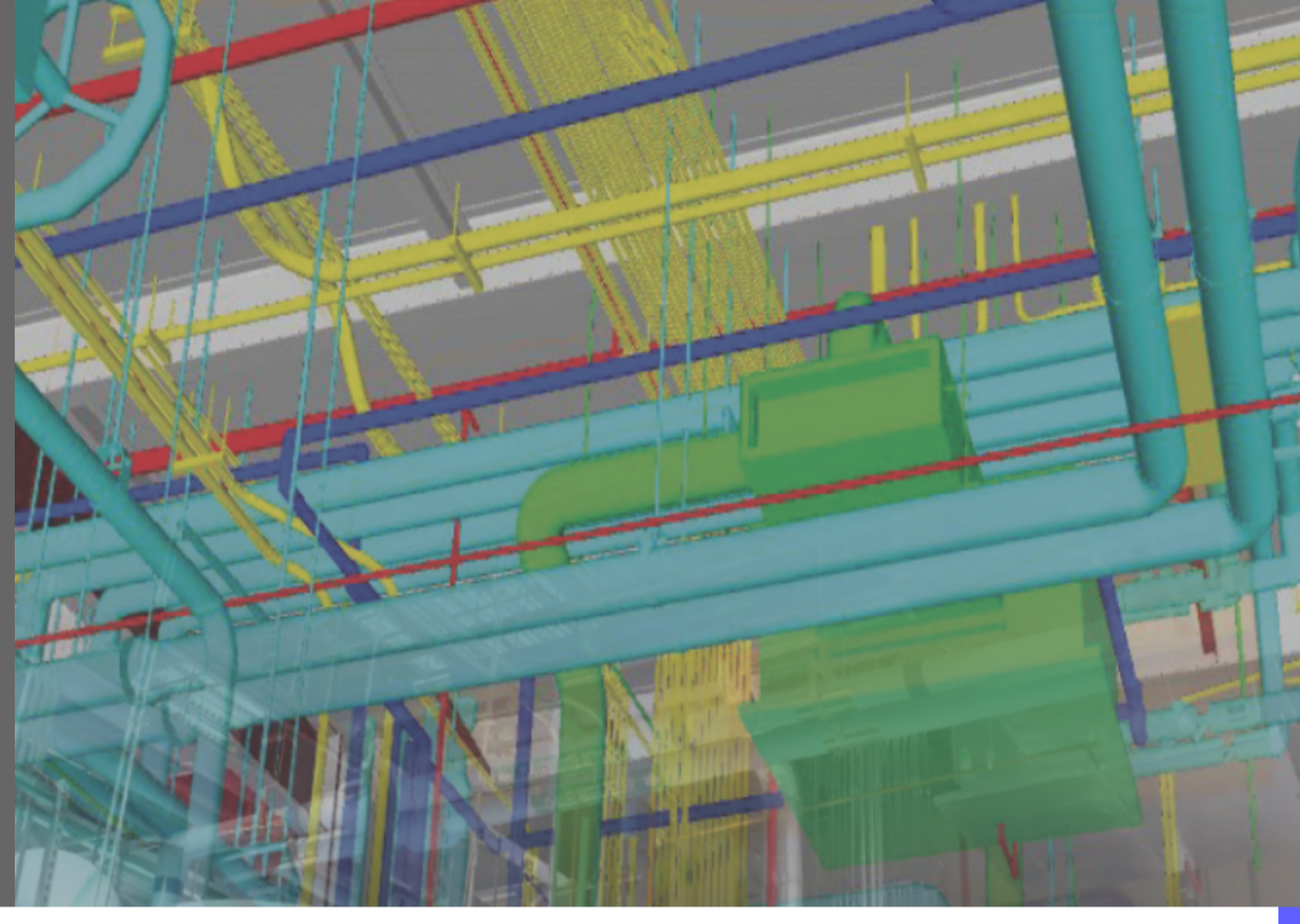
By leveraging a centralized Revit model for storing and sharing data between architects and engineering teams, TDIndustries saw a massive change in the way their staff were able to collaborate.

“ Everything now is more real-time, everything's a lot quicker when we need responses to pricing, to design changes. ”

Ken Luong, Project Manager at TDIndustries

Faster, more accurate pricing Saving time wherever possible

By creating Revit models early on, and incorporating the latest engineering data, TDIndustries are able to achieve better pricing efficiency. They can make adjustments as part of the natural progression of design, and relay pricing impacts in a more timely fashion.



Improving constructability Bringing design and coordination together

With data-rich Revit models available from the very start of a project, TDIndustries can bring in real-world fabrication parts to the Revit model – which cuts timelines, streamlines coordination, and increases accuracy. Additionally, using the same Revit model, TDIndustries and the trades can communicate issues in design and construction much earlier in the process and make the changes needed.



The bottom line Key benefits of integrated engineering for TDIndustries



Improved team collaboration



More accurate estimating



Impressed clients and won new projects



More accurate, agile pricing

“ Using Revit in the early stages of pre-bid and design has been advantageous and gives us a competitive edge. ”

Liz Welch, Mechanical Engineer, TDIndustries

[Read full case study >](#)