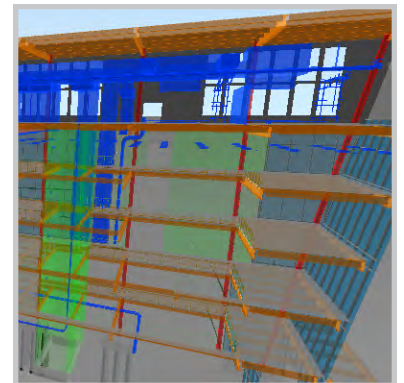
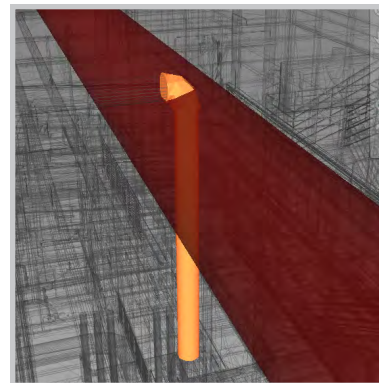
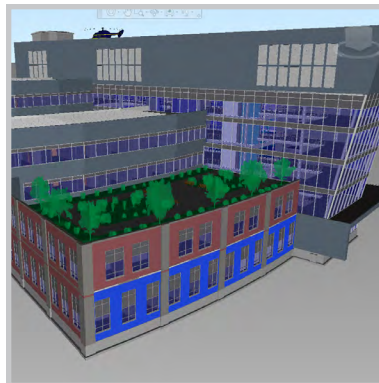
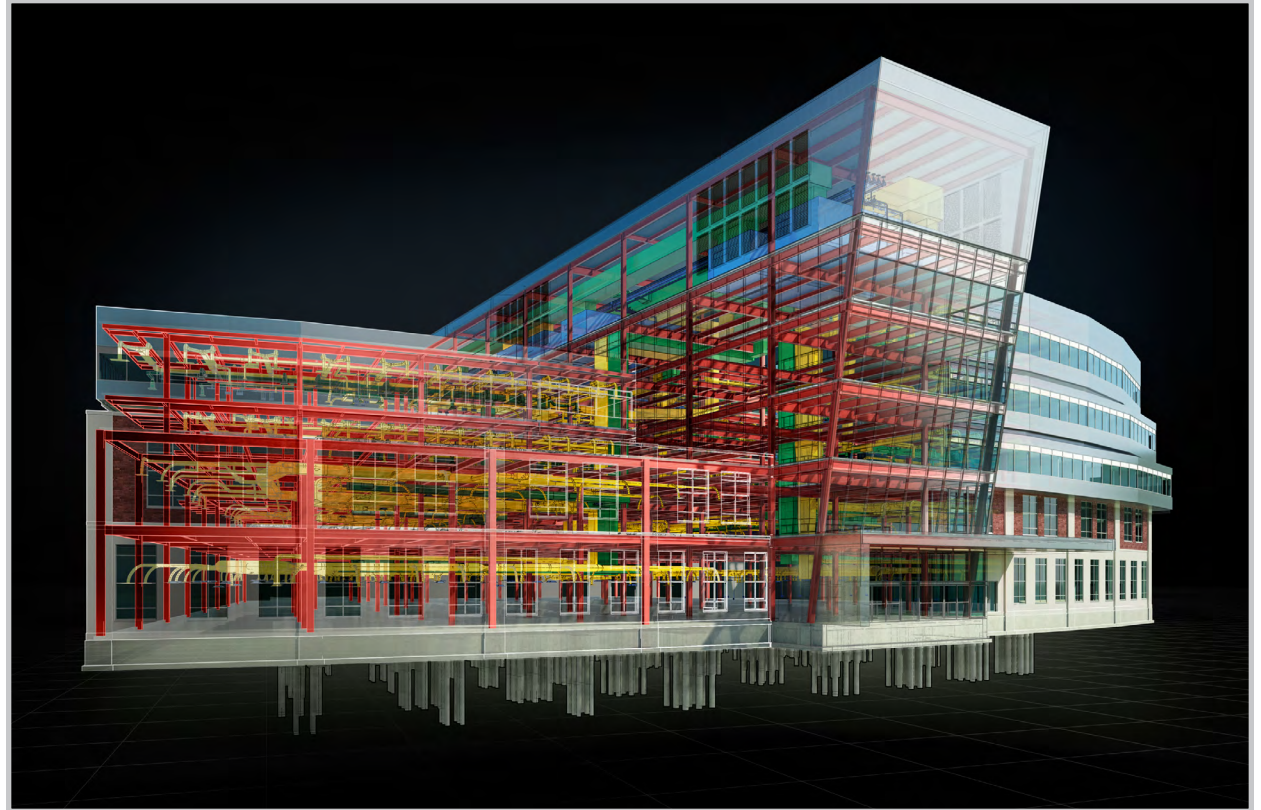


How BIM transforms construction >

What if you had greater intelligence about your projects even before breaking ground?

With Autodesk® Building Information Modeling (BIM) solutions for construction, you can explore and visualize projects digitally—before building them. You can gain greater control over cost, improve coordination among team members, and help accelerate project schedules. And you can overcome many of the challenges common to conventional construction practices, helping you to win more work.

How BIM transforms construction



Challenges with conventional practices

Challenges with conventional practices >

Do you find yourself longing for a better way of dealing with everyday construction issues?

Competitive pressures

Owners demand faster delivery and lower costs.



Design confusion

Lack of design clarity slows project execution.



Significant change orders

Requests for information (RFIs) lead to time-consuming change orders and expensive rework.



Escalating costs

Manual counting and measurement make it difficult to stay ahead of changing material costs.



Field risks

On-site fabrication increases labor costs, safety hazards, and the chance of delays.



Coordination complexity

Complex task sequencing across trades hampers fast-track projects.

BIM in action >

When you replace conventional practices with BIM, you can gain early insights into constructability, cost, schedule, and coordination issues. Then you can use those insights to drive better planning and execution in the field.

BIM in action

Win more work

Show potential clients how BIM can help them save time and money, and improve their building performance and safety.

Understand design intent

Visualize design with BIM to gain early insights into project details.

Coordinate designs

Communicate design intent with the team and into the field.

Reduce risks

Spot issues before construction to avoid RFIs, change orders, and rework.

Control costs

Stay on top of material costs and enable cost savings with off-site prefabrication.

Schedule and coordinate in 4D

Link tasks, resources, and schedules to 3D models.

Grow your business with BIM

Grow your business with BIM >

The BIM process gives you a deeper understanding of how your project can be constructed in the real world, helping you execute more successful projects. Your ability to visualize, coordinate, cost, and schedule projects increases—helping you to win more work and expand your business.

Visit the [Autodesk BIM Center](#) to read about the customer successes highlighted in this section.



See how BIM delivers a competitive advantage:



Choosing Autodesk BIM solutions

Explore how Autodesk BIM solutions for construction can help you gain winning capabilities.

[Choosing Autodesk BIM solutions >](#)

Autodesk BIM solutions for construction let you improve building projects—before, during, and after construction. Even before you break ground, intelligent models allow you to explore the best way to construct a project. As projects advance, you communicate and collaborate more seamlessly with subcontractors and fabricators. Field BIM lets you take model-based processes anywhere on the building site. Throughout the project, you give the owner visibility into the project with sophisticated visualizations. And at handoff, you turn the building modeling into a value-added service that the owner can use throughout the building's lifecycle.



[Autodesk Building Design Suite](#)



[Collaboration and data management](#)



[Autodesk BIM 360](#)

Make your move

Make your move >



London Blackfriars station, courtesy of Network Rail and Jacobs®

Have a reseller contact you

Your reseller can help you explore how BIM can improve your processes and workflows. To learn more about upcoming BIM workshops, demonstrations, and other events, or to get product and pricing information, have an [Autodesk Authorized Reseller](#) follow up with you.

Learn more

Go to [Autodesk Construction Solutions](#) to access free* Autodesk product trial downloads, customer stories, white papers, and live and archived webcasts on various construction topics presented by Autodesk experts, customers, and partners.

Get started

BIM isn't a technology or a product—it's a process. Get ready to integrate BIM into your workflow with the [Autodesk BIM Deployment Plan](#), a practical framework to help you get started. Using industry-based templates, this resource addresses the project-specific and organizational needs of companies interested in shifting from conventional practices to a more model-based approach.

*Products are subject to the terms and conditions of the end-user license agreement that accompanies each software product.

Autodesk, AutoCAD, Autodesk Inventor, BIM 360, Buzzsaw, Constructware, Inventor, Navisworks, Revit, Robot, Showcase, SketchBook, 3ds Max, and Vela Systems are registered trademarks or trademarks of Autodesk, Inc., and/or its subsidiaries and/or affiliates in the USA and/or other countries. All other brand names, product names, or trademarks belong to their respective holders. Autodesk reserves the right to alter product and services offerings, and specifications and pricing at any time without notice, and is not responsible for typographical or graphical errors that may appear in this document.