

# THE WAY YOU PURCHASE YOUR SOFTWARE IS CHANGING

## A BUYER'S GUIDE

The option to purchase new perpetual licenses of Autodesk products will end as of:

**January 31, 2016** – Most individual products

**July 31, 2016** – Most Autodesk Design & Creation Suites and additional individual products



These products will continue to be available for purchase as subscriptions; existing perpetual licenses can continue to be used and kept up-to-date with an active Maintenance Subscription.

This guide provides information about Autodesk software license types, to help you make an informed decision while you have the option to add new perpetual licenses.

### What are my choices?

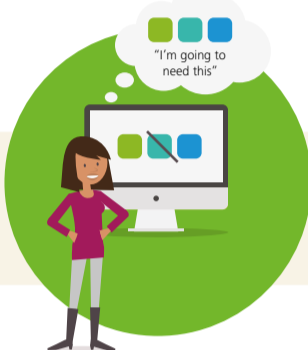
BUY PERPETUAL LICENSES WHILE THEY ARE STILL AVAILABLE

ACCESS AUTODESK SOFTWARE WITH NEW DESKTOP SUBSCRIPTION OPTIONS



### What factors should I consider?

You are an existing Maintenance Subscription customer looking to grow or have identified long term, consistent requirements



You are a new or existing Autodesk customer without Subscription or a small business where up-front cost is a strong consideration



Your company allocates software purchases as capital expenses

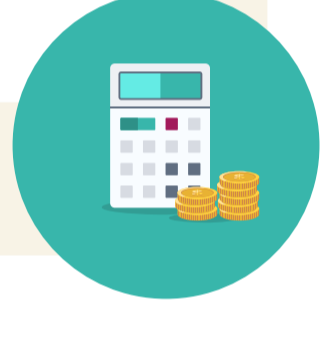


You want the option to attribute software costs to projects

You are using a mix of products with and without Maintenance Subscription



Your organization has cash constraints, has project and peak use needs, or hires temporary staff



You always want to keep your perpetual licenses up to date and get technical support



Your company has global consultants that work outside the country for more than 90 days and require access to the software

### Your options, with a bit more detail

#### Perpetual license with Maintenance Subscription

Add Maintenance Subscription to your perpetual license to maximize the long-term value of your software. You can even lock in your price by choosing a multi-year contract.

#### Desktop Subscription

Get the same software that you would with a perpetual license, but with lower upfront costs and flexible budgeting that's easier to manage. Now available on multi-year terms.

	AUTODESK MAINTENANCE SUBSCRIPTION	AUTODESK DESKTOP SUBSCRIPTION
<b>Subscription entitlements</b>		
Up-to-date software	✓	✓
Flexible Licensing: (includes Home Use Rights, Previous Version Rights, Global Use Rights <sup>1</sup> )	✓	✓
Additional cloud and software services	✓	✓
Technical support	✓	✓
Administrative tools	✓	✓
<b>Subscription options</b>		
Multi-year options	✓	✓
Network Licenses	✓	Coming Soon <sup>2</sup>
Pay-as-you-go options		✓

<sup>1</sup>See Autodesk Subscription [Terms and Conditions](#) for details. Enterprise customers who deal directly with Autodesk should speak with their Autodesk Account Executive for more information.

<sup>2</sup>More information in the [Network Subscription FAQ](#) about the upcoming network subscription option.

### You can even combine your options as needed

#### Perpetual license with Maintenance Subscription



Purchase additional perpetual licenses while they're still available

#### Perpetual license with Maintenance Subscription & Desktop Subscription



Purchase additional perpetual licenses and use Desktop Subscription licenses for term-based projects

#### Desktop Subscription



Access Autodesk software with Desktop Subscription for term-based projects

There's never been a better time to choose what works best for your budget, your people, and your projects. Get access to the latest Autodesk software, licensing rights, and support with [Autodesk Subscription](#).

To find out which products are affected by these changes, please visit:

[www.autodesk.com/products/perpetuallicenses](http://www.autodesk.com/products/perpetuallicenses)

Special savings are available for a limited time. [www.autodesk.com/campaigns/global-promotion](http://www.autodesk.com/campaigns/global-promotion)