

Upgrade to an Autodesk subscription

Subscribe today to guarantee continued support

Upgrade and save up to 20% by trading in your perpetual license.



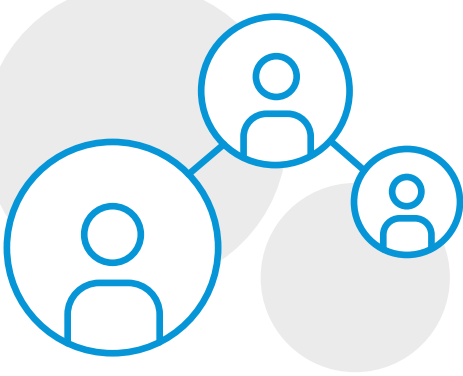
TOP THREE REASONS TO SUBSCRIBE

Subscribers get more than just continued support from their Autodesk products. As a subscriber you'll have access to a host of benefits designed to provide greater access, flexible control, and valuable insights:



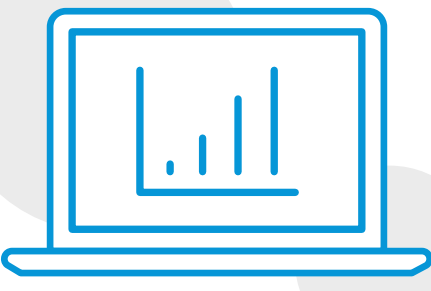
01 GREATER ACCESS

More quickly activate and access products without manually tracking serial numbers.



02 FLEXIBLE CONTROL

Manage users more intuitively by product or person instead of contract number.



03 VALUABLE INSIGHTS

Take advantage of product usage reporting to make better decisions.

SUBSCRIBE BEFORE IT'S TOO LATE!



On August 31, 2019, Autodesk ended support for software versions 2010 and earlier that have reached the end of support. Upgrade to a subscription today and guarantee continued access to a supported version.



Microsoft has announced the end of extended support for Windows 7 in January 2020. Upgrading to a subscription will ensure software compatibility for customers moving to Windows 10.

Visit asean.autodesk.com/subscription or contact your Autodesk representative or reseller today to learn more.

* Customers can save up to 20% on industry collections or most individual products when they purchase eligible 1-year or 3-year term subscriptions with single- or multi-user access and submit qualifying associated seats of release 1998 through 2019 perpetual licenses not on an active maintenance plan. Full product lists, details and restrictions at www.autodesk.com/campaigns/global-promotion/terms-and-conditions

Offer available from November 1 through November 29, 2019 in Japan, Korea, ASEAN countries, Taiwan, China, Hong Kong, Australia, New Zealand and India.

*Offer subject to reseller participation. Channel partners are independent and free to set their own prices. Reseller prices may vary. Advertised discounts and savings are based on the Autodesk Suggested Retail Price (excluding taxes) for specified product. Autodesk's Suggested Retail Price is used for reference purposes only and may not be in local currency. Actual retail price is determined by customer's selected reseller and is subject to currency fluctuation.

AUTODESK RESERVES THE RIGHT TO CANCEL, SUSPEND OR MODIFY PART OF OR THIS ENTIRE PROMOTION AT ANY TIME WITHOUT NOTICE, FOR ANY REASON IN ITS SOLE DISCRETION. PRICES FOR AUTODESK SOFTWARE ARE SUBJECT TO CHANGE.

** All subscription benefits may not be available for all products or services in all languages and/or geographies. Subscription programs are subject to the applicable Autodesk subscription terms and conditions and/or Autodesk Terms of Service.

Autodesk, the Autodesk logo, AutoCAD LT, 3ds Max, ArtCAM, AutoCAD, Civil 3D, FeatureCAM, Infracore, Inventor, Inventor LT, Maya, Maya LT, MotionBuilder, Navisworks, Revit, Revit LT, Robot, Showcase, are registered trademarks or trademarks of Autodesk, Inc., and/or its subsidiaries and/or affiliates in the USA and/or other countries. All other brand names, product names, or trademarks belong to their respective holders. Autodesk reserves the right to alter product offerings, specifications and pricing at any time without notice, and is not responsible for typographical or graphical errors that may appear in this document.