

# Upgrade to an Autodesk subscription

Subscribe today to guarantee continued support

Upgrade and save 20% by trading in your perpetual license.



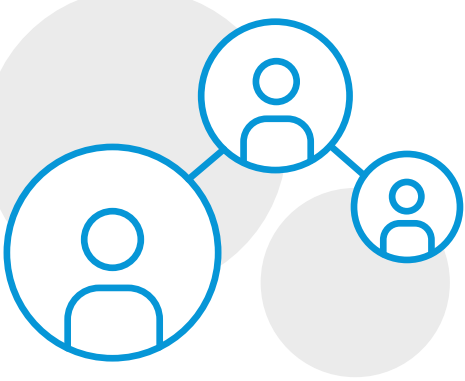
## TOP THREE REASONS TO SUBSCRIBE

Subscribers get more than just continued support from their Autodesk products. As a subscriber you'll have access to a host of benefits designed to provide greater access, flexible control, and valuable insights:



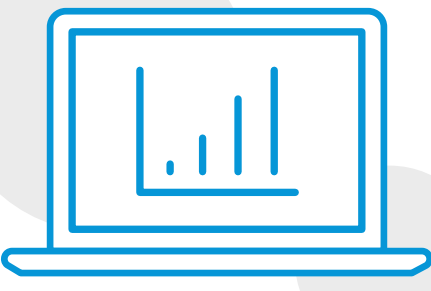
### 01 GREATER ACCESS

More quickly activate and access products without manually tracking serial numbers.



### 02 FLEXIBLE CONTROL

Manage users more intuitively by product or person instead of contract number.



### 03 VALUABLE INSIGHTS

Take advantage of product usage reporting to make better decisions.

## SUBSCRIBE BEFORE IT'S TOO LATE!



On August 31, 2019, Autodesk will end support for software versions 2010 and earlier that have reached the end of support. Upgrade to a subscription today and guarantee continued access to a supported version.



Microsoft has announced the end of extended support for Windows 7 in January 2020. Upgrading to a subscription will ensure software compatibility for customers moving to Windows 10.

Visit [www.autodesk.com/subscription](http://www.autodesk.com/subscription) or contact your Autodesk representative or reseller today to learn more.

\* Customers can save 20% on industry collections or most individual products when they purchase eligible 1-year or 3-year term subscriptions with single- or multi-user access and submit qualifying associated seats of release 1998 through 2019 perpetual licenses not on an active maintenance plan. Full product lists, details and restrictions at [www.autodesk.com/campaigns/global-promotion/terms-and-conditions](http://www.autodesk.com/campaigns/global-promotion/terms-and-conditions)

Offer available from May 7 through October 25, 2019 in US, Canada and Latin America.

Available from participating resellers and Autodesk Stores only. Reseller prices may vary. Please consult your local Autodesk reseller for further details.

AUTODESK RESERVES THE RIGHT TO CANCEL, SUSPEND OR MODIFY PART OF OR THIS ENTIRE PROMOTION AT ANY TIME WITHOUT NOTICE, FOR ANY REASON IN ITS SOLE DISCRETION. PRICES FOR AUTODESK SOFTWARE ARE SUBJECT TO CHANGE.

\*\* All subscription benefits may not be available for all products or services in all languages and/or geographies. Subscription programs are subject to the applicable Autodesk subscription terms and conditions and/or Autodesk Terms of Service.

Autodesk, the Autodesk logo, AutoCAD LT, 3ds Max, ArtCAM, AutoCAD, Civil 3D, FeatureCAM, InRoads, Inventor, Inventor LT, Maya, Maya LT, MotionBuilder, Navisworks, Revit, Revit LT, Robot, Showcase, are registered trademarks or trademarks of Autodesk, Inc., and/or its subsidiaries and/or affiliates in the USA and/or other countries. All other brand names, product names, or trademarks belong to their respective holders. Autodesk reserves the right to alter product offerings, and specifications and pricing at any time without notice, and is not responsible for typographical or graphical errors that may appear in this document.

© 2019 Autodesk, Inc. All rights reserved.