



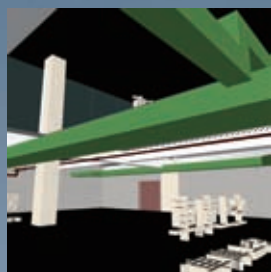
恒基兆業地產有限公司
HENDERSON LAND DEVELOPMENT COMPANY LIMITED



Henderson Land Development Company Limited is one of the largest enterprises in Hong Kong with core business comprising investment holding, property development, property investment and related businesses including project management, construction, property management, and financial services. The Company focuses primarily on the Hong Kong market, but is also active in Mainland China where it has been steadily expanding its investments and scale of operations in recent years. The Company was incorporated in Hong Kong in 1976 and obtained its local public listing in 1981.

<http://www.hld.com>





PROJECT USING BIM:

Project: World Financial Centre, Beijing

Location: No. 2 Guan Dong Dian, Chao Yang District, Beijing

Project Information: The buildings are designed as twin "crystal jewel boxes" with special effect of façade lighting on the exterior. It is a new landmark in the heart of Beijing.





When started to use BIM 2006

THE OBJECTIVES OF USING BIM

- To enhance the effective of design co-ordination and integration
- To improve the accuracy of co-ordinated services drawings
- To reduce the construction waste
- To maintain continuous improvement and enable performance excellence
- To enhance the efficiency of building handover to Facilities Manager/Tenants

SIGNIFICANT IMPROVEMENTS

- Improved the communication among the project design team in Hong Kong and China on design co-ordination and integration issues
- Enhanced the efficiency on checking the building constructability and functionality
- Shortened the time on design alternative study and confirmation
- Performed the high quality design auditing