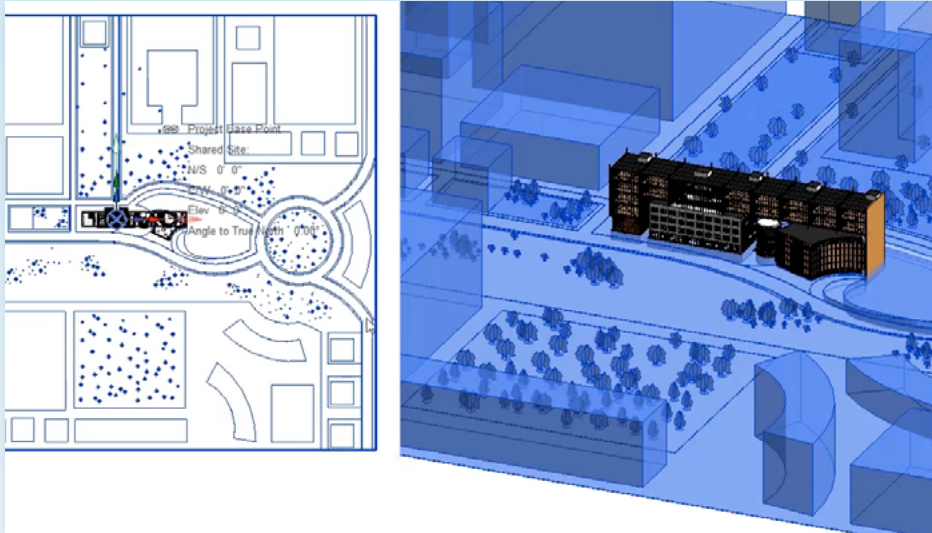


# Reset shared coordinates



We improved the design and functionality of reset shared coordinates for better collaboration.

## A one-click solution to resetting shared coordinates

### FEEDBACK FORUM

Customers voiced their concerns around the difficulty of resetting shared coordinates in Revit for project teams.

### WHAT WE HEARD

- Customers want the ability to eliminate the shared coordinates relationship with linked models and the GIS coordinate system acquired from a link model.
- Moving the Survey Point back to the internal origin and setting its shared coordinates as (0,0,0) with an easy reset button would be useful.

### WHAT WE BUILT

A new button under coordinates that resets shared coordinates in the current model.

### WHAT'S NEXT

We are exploring potential improvements around Revit shared coordinates.

[Join the Autodesk Product Research Community](#) to inform design and decision-making at Autodesk.

