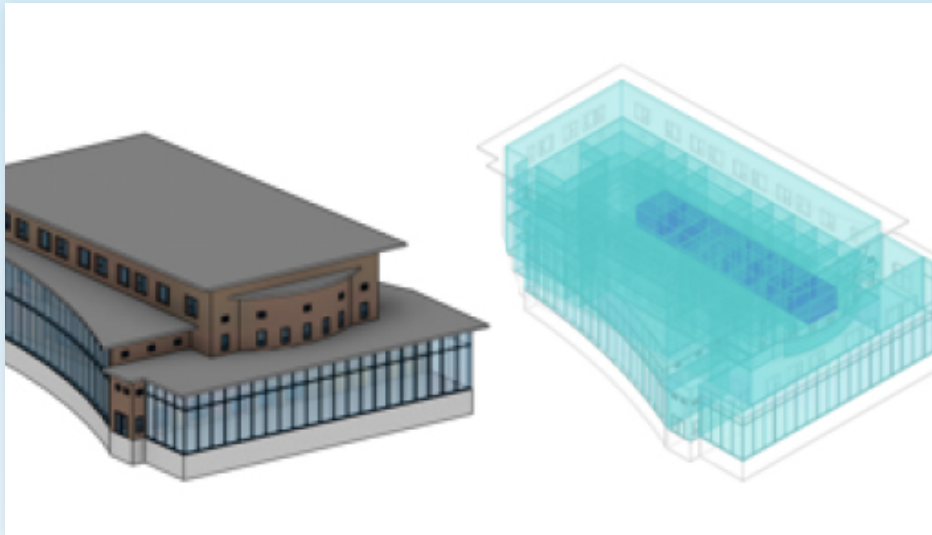


# Systems analysis workflow



We improved the systems analysis workflow so analysis can now be done early in the design process without reliance on a highly advanced model.

## Improved systems analysis workflow in Revit

### FEEDBACK FORUM

Customers told us they highly value the capabilities to do energy and systems analysis entirely in Revit and to generate shareable reports.

### WHAT WE HEARD

- The Energy Analytical Model helps communicate design intent without a physical model. The visual representation needs to look more “air-tight” in order for the analysis to be trusted.
- Being able to do everything in a single tool helps maintain consistency and saves money.
- Reports need to be revised so that they are more navigable and legible.
- Both architects and engineers want to run estimations earlier in the design process and collaborate more efficiently.

### WHAT WE BUILT

- We made enhancements to Energy Analytical Model surfaces and performance to improve efficiency, accuracy, and stability.
- We’re building loads and psychometrics reports allowing engineers to clearly understand the size and cost of their system needs.

### WHAT'S NEXT

We are continuing to enhance the Energy Analytical Model with an improved 3D representation and to improve the workflow and user interface.

[Join the Autodesk Product Research Community](#) to inform design and decision-making at Autodesk.