



2022 Digital Construction Summer School

Autodesk Learning and Certification

Overview

John Herridge

AEC Technical Marketing Mgr. | Autodesk, Inc.



About me



John Herridge

AEC Technical Marketing Mgr.
Autodesk, Inc.

- 35 years of AEC industry experience
- 16 years with Autodesk Education team
- Autodesk University speaker for multiple years
- Autodesk Certified Instructor Platinum

Presentation agenda

- About Autodesk Learning and Certification
- Overview of modules and skill-building courses
- Certification prep courses
- Autodesk certifications available
- Beta exam opportunity
- Q & A



Autodesk Learning and Certification hub

Preparing students for the future in Architecture, Engineering, and Construction



The screenshot shows the Autodesk Learning and Certification hub website. At the top, there is a dark navigation bar with the Autodesk logo, a search bar, and icons for shopping, location (US), and a user profile (PK). Below this is a secondary navigation bar with links for Products, Support, Learn, and Community. The main content area features a large banner with the heading "Uplevel your skills Autodesk learning and certification" and a sub-heading "Introducing a new way to learn and certify for today's adaptive industry professionals and innovators." Below this is a paragraph of text. The banner image shows a man working at a computer with a 3D model of a robotic arm on the screen. Below the banner is a section titled "Shape your future" with a paragraph of text. At the bottom, there are two small images: one showing a person's hands holding a small object, and another showing a person working at a computer.

AUTODESK

Products ▾ Support ▾ Learn ▾ Community ▾

CERTIFICATION OVERVIEW LEARNING OFFERINGS ▾ CERTIFICATIONS SUPPORT & POLICIES MY DASHBOARD

We've updated certification fees: Associate \$150, Professional \$200, Expert \$250

Uplevel your skills

Autodesk learning and certification

Introducing a new way to learn and certify for today's adaptive industry professionals and innovators. Whether you are looking to change careers or build skills in your current role, we don't think you should have to go it alone. At Autodesk, we're here to help you stay on the edge of industry convergence and changing roles through self-paced learning.

Shape your future

Build, validate, and showcase in-demand skills to succeed in today's evolving industries. Whether you're starting your career or expanding your skillset, take immediate steps toward your goals.

Two small images at the bottom of the page. The left image shows a person's hands holding a small, metallic object. The right image shows a person working at a computer, with a focus on their hands and the keyboard.

Modules

Flexibility to learn everything or just exactly what's needed



Revit module examples



Revit

Professional | ~1 hr. 20 min.

Modeling walls

Module | Skill builder

[View overview](#)

[Quick view](#)



Revit

Professional | ~1 hr. 5 min.

Modeling curtain walls

Module | Skill builder

[View overview](#)

[Quick view](#)



Revit

Professional | ~40 min.

Modeling roofs

Module | Skill builder

[View overview](#)

[Quick view](#)



Revit

Professional | ~55 min.

Modeling stairs and railings

Module | Skill builder

[View overview](#)

[Quick view](#)



Revit

Professional | ~35 min.

Modeling rooms and areas

Module | Skill builder

[View overview](#)

[Quick view](#)



Revit

Professional | ~50 min.

Design modeling for Revit

Module | Certification prep

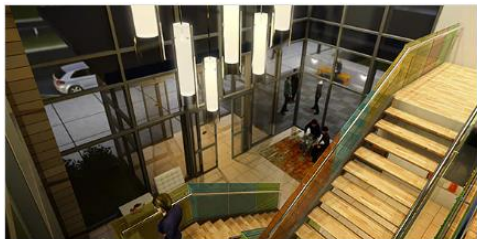
[View overview](#)

[Quick view](#)

Skill builder courses

Flexibility to learn everything or just exactly what's needed

Revit course example



Introduction to 3D Modeling for Architectural Design

Take the first step on your learning journey as you discover the core concepts of modeling in Revit for architectural design.

[Get started](#)

Associate | 3 hours to complete

R Revit

Associate | ~6 hr. In progress

Introduction to 3D Modeling for Architectural Design

Course | Skill builder

Take the first step on your learning journey as you discover the core concepts of modeling in Revit for architectural design.

[Continue >](#) +

Outline



Overview

Course modules

Related learning

Getting started

Wall Layout, Design, and Editing

Door and Window Layout and Design

Overview


Gain the skills needed to design buildings in 3D and work with tools that are key to your professional growth. Get a hands-on approach to creating and editing walls, doors and windows, roofs, stairs, ramps, and railings by following typical design workflows. Practice these workflows on your own and use your skills to solve new challenges.

After completing this course, you'll be able to:

Certification prep

Courses and modules designed to drive certification success




 Revit

Professional | ~7 hr.

Revit for Architectural Design Professional Certification Prep

Course | Certification prep

Prove you're on the right track to certification with self-paced lessons and a practice test. This certification prep course reviews the core skills covered on the Autodesk Certified Professional in Revit for Architectural Design certification exam.

[Get started >](#) + 

Outline



Overview

Course modules

Related learning

① Getting started



② See where you stand



③ Design modeling for Revit



Overview

Learn and practice workflows and skills covered in the exam, with sections on modeling and materials, families, documentation, views, and Revit project management. Review advanced modeling architectural topics and learn to work with walls, floors, roofs, ceilings, stairs, columns, and rooms. Learn about family categories and types, phases and design options, schedules, and worksharing.

Create a basic wall



Create a basic wall



Video quiz

1. Which option best describes basic walls?

- Basic walls are a system family within Revit that can consist of one single element, or be comprised of multiple layers to create a compound wall.
- Basic walls are only comprised of a generic layer, and are best used when the user is not sure of the wall composition.
- Basic walls are walls that have a consistent top and bottom constraint.
- Basic walls can only be modified from the top or bottom constraint when using the attach option.
- Basic walls are a combination of two wall types stacked vertically.

Why Autodesk Certifications

Certifications help encourage great careers



Autodesk certified professional
120 mins | 60 questions | \$ 200 / exam

Take exams in-person or online!

Beta exam opportunity

Revit Architecture Certified Professional exam



Autodesk certified professional**
150 mins | 60 questions | \$ 35 / exam

**Based upon Revit 2021 and higher

Autodesk Certified Professional in
Revit for Architectural Design
(Beta)

This beta exam is ideal for professionals and students who possess advanced knowledge and skills in Revit for architectural design. It assesses professional-level skills in relevant workflows, processes, and project objectives for various architectural design applications. Review the [exam objectives](#) and [exam guide](#) and apply for the exam today.

[→ Apply here](#)

Professional | 150 min.

Questions and Answers



Autodesk and the Autodesk logo are registered trademarks or trademarks of Autodesk, Inc., and/or its subsidiaries and/or affiliates in the USA and/or other countries. All other brand names, product names, or trademarks belong to their respective holders. Autodesk reserves the right to alter product and services offerings, and specifications and pricing at any time without notice, and is not responsible for typographical or graphical errors that may appear in this document.

© 2022 Autodesk. All rights reserved.