



# How to win more projects with Spacemaker



An  **AUTODESK** product





Traditionally, the process of bidding for projects requires a lot of upfront resource and time investment. So, uncertainty about the decision-making process and unidentified risks can lead to costly changes and delays at a later stage. With tighter deadlines that limit your time to properly explore all possible options for a site it's time to make a change.

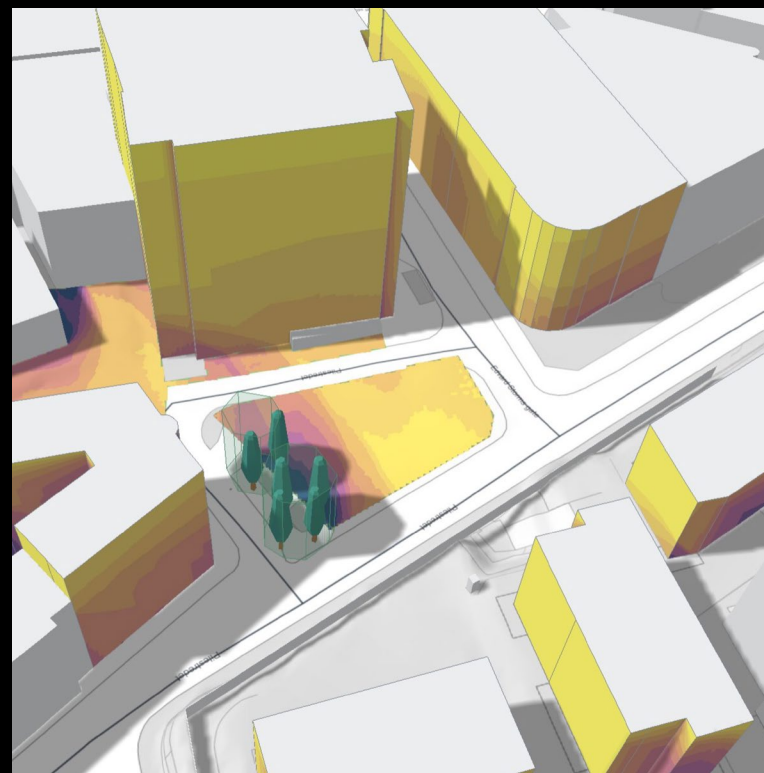
**Discover a new, better process to win more projects.**

Learn about four ways you can use Spacemaker to create better proposals in less time. Make confident design decisions, reduce risk, and improve stakeholder buy-in. All while increasing your chances of success in your next project bids.





# How to win more projects with Spacemaker



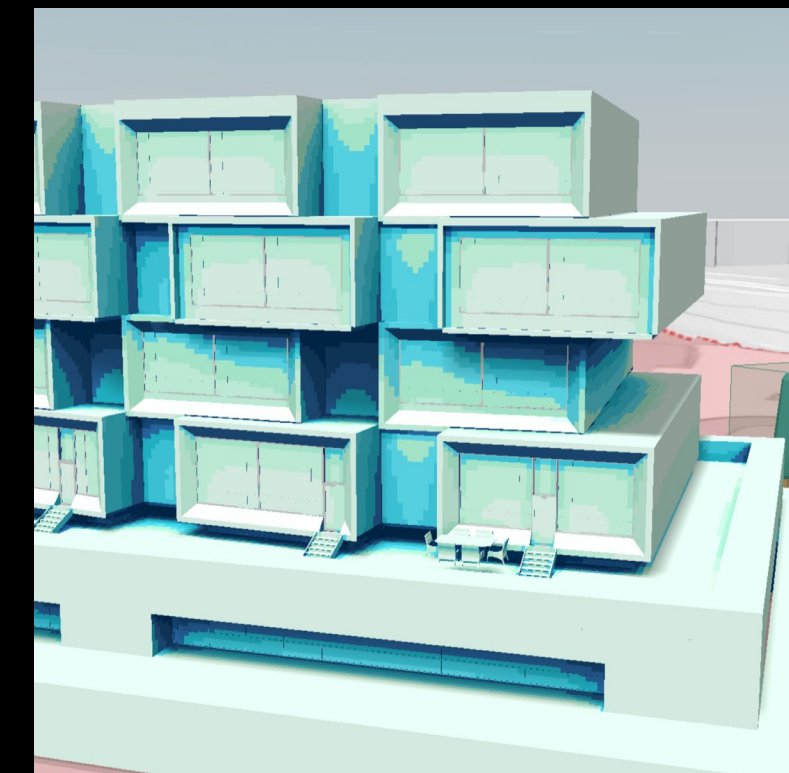
**01** Screen new sites



**02** Perform due diligence

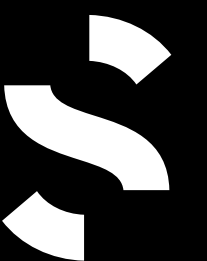


**03** Communicate your ideas



**04** Benchmark performance

Click the images above to find out more

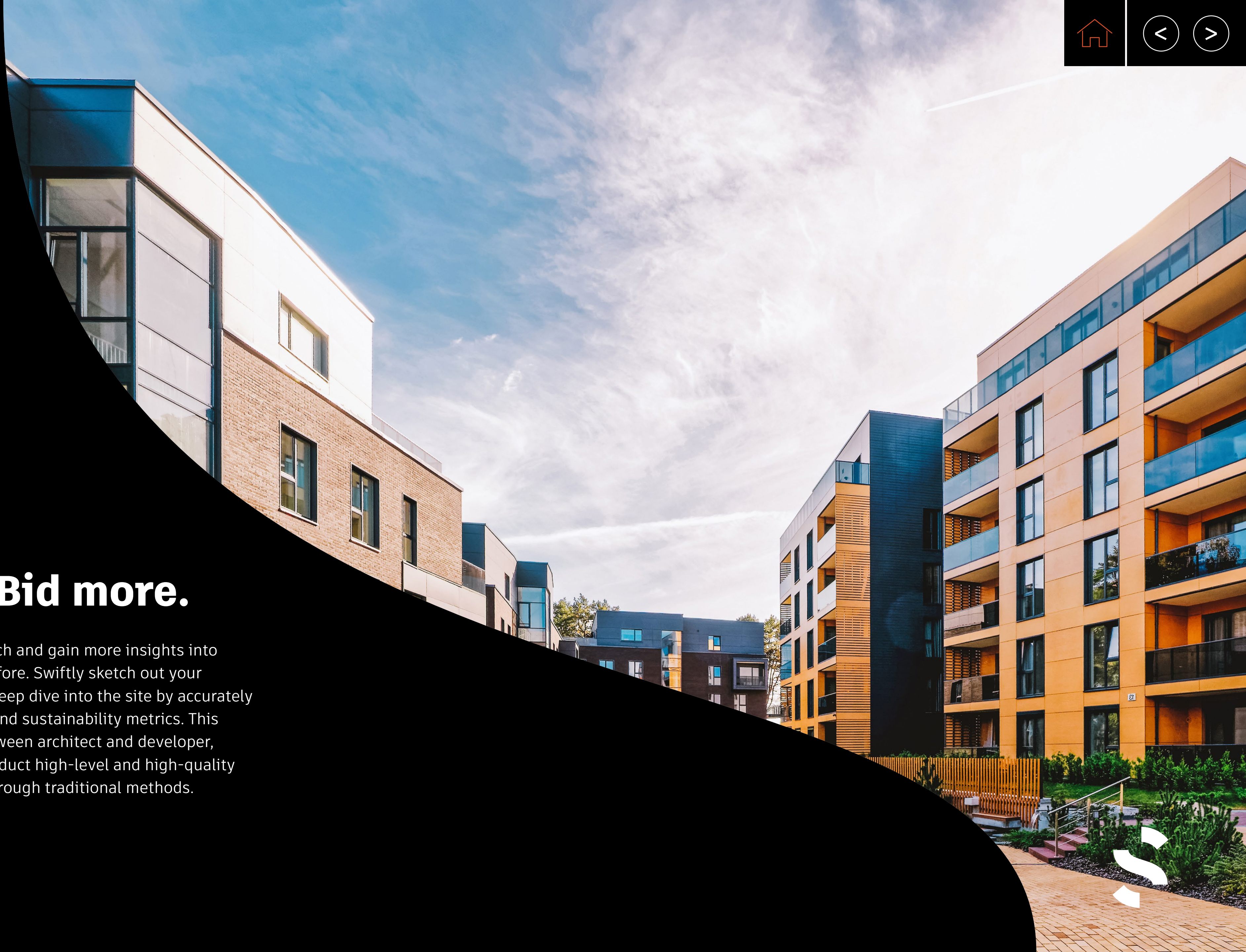




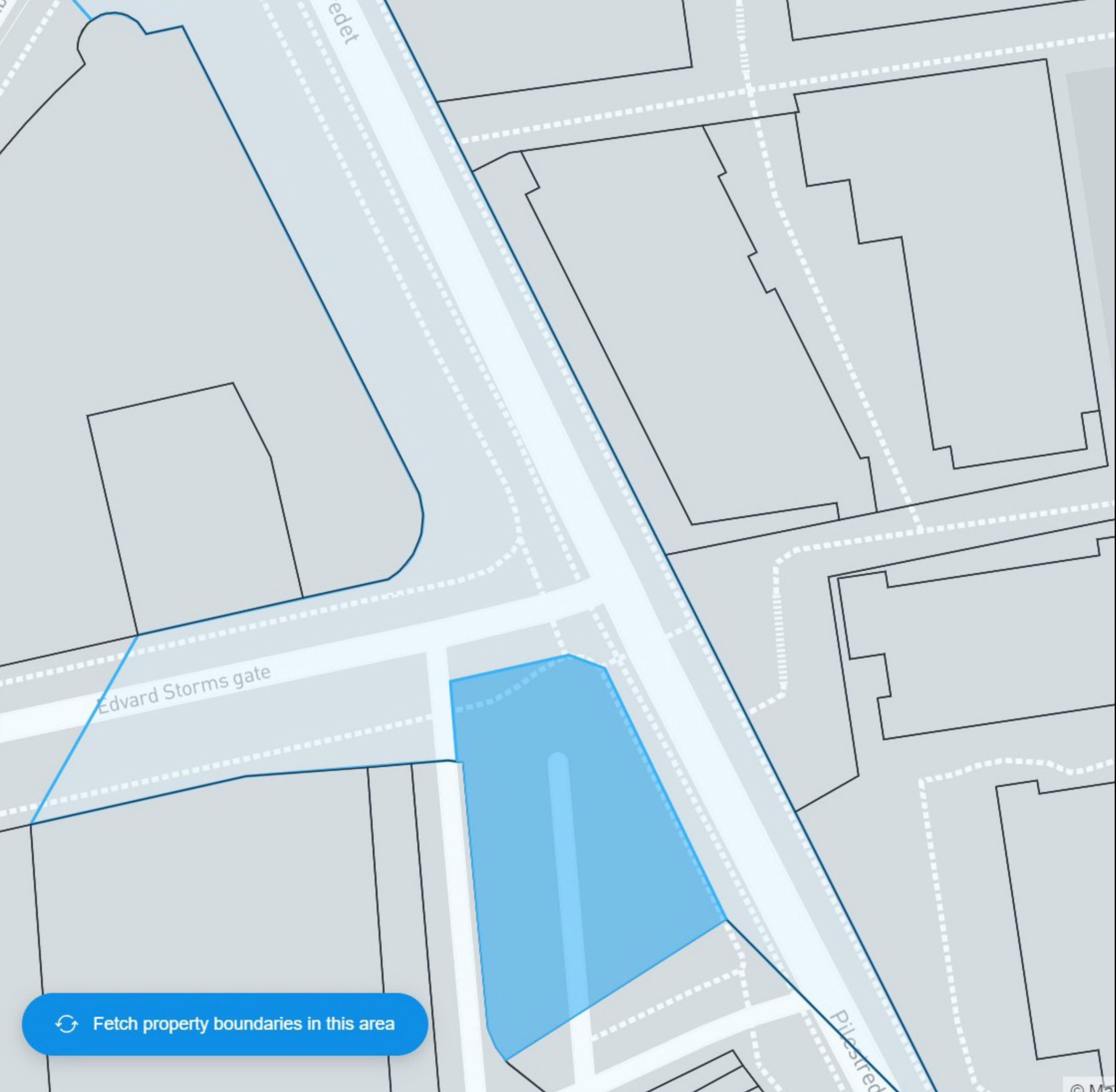


## 01. Explore more. Bid more.

Get started quickly. Create your project from scratch and gain more insights into a site's opportunities and challenges than ever before. Swiftly sketch out your concept massing mode—already in 3D—and take deep dive into the site by accurately analyzing it for density, daylight, sunlight, noise, and sustainability metrics. This helps reduce site-specific risks, increase trust between architect and developer, and save time for architects, enabling them to conduct high-level and high-quality capacity studies in a fraction of the time it took through traditional methods.







Create your project

01

Edit your site

02

Analyze existing site conditions

03

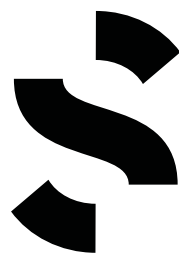
Understand the site potential

04

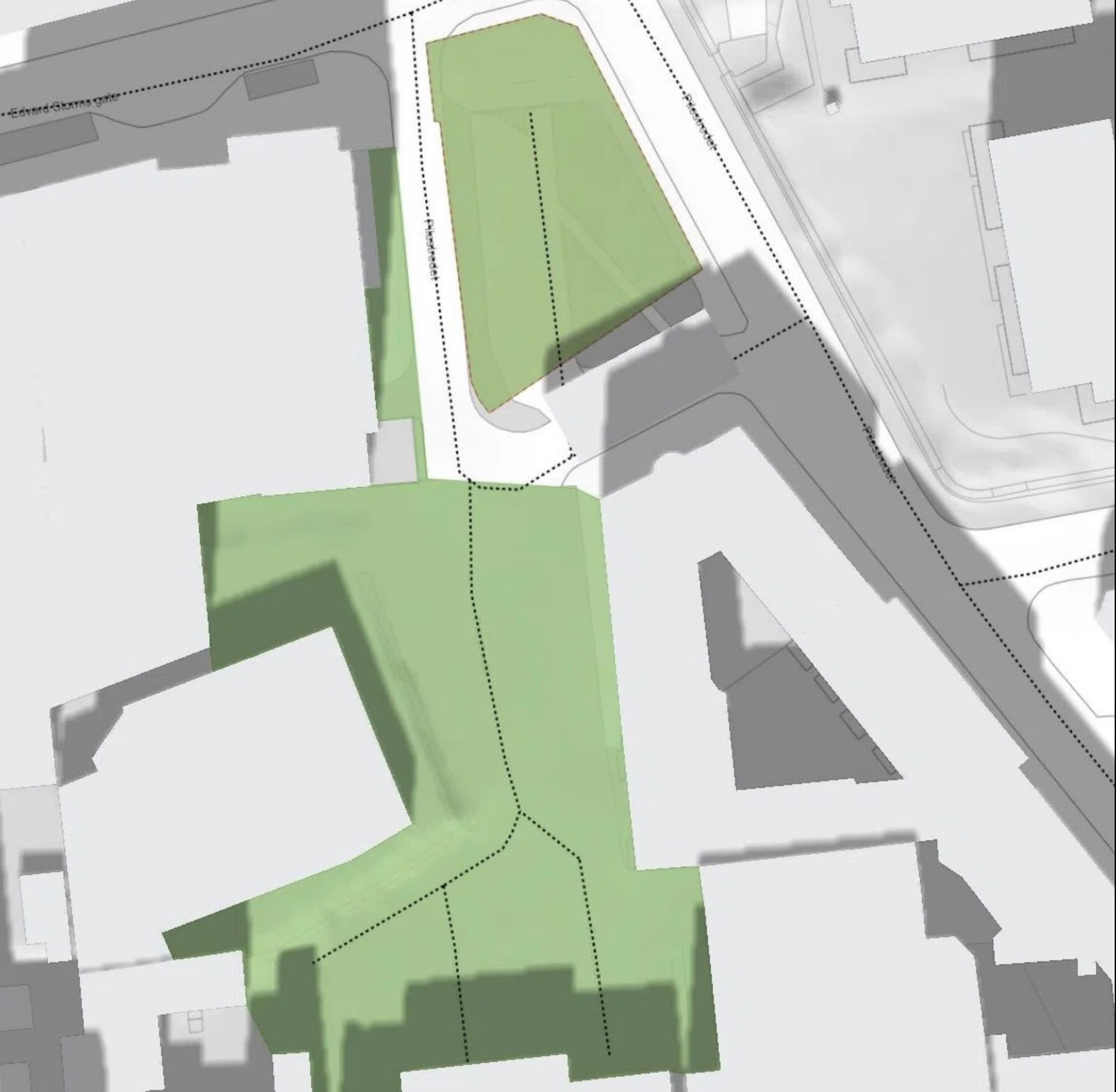
# Create your project

Get a populated 3D terrain model for your project in minutes. Fetch data automatically from global data sources or local databases.

Explore new sites and bid for more projects







Create your project

01

Edit your site

02

Analyze existing site conditions

03

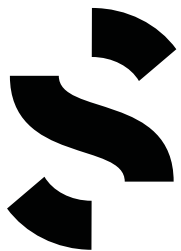
Understand the site potential

04

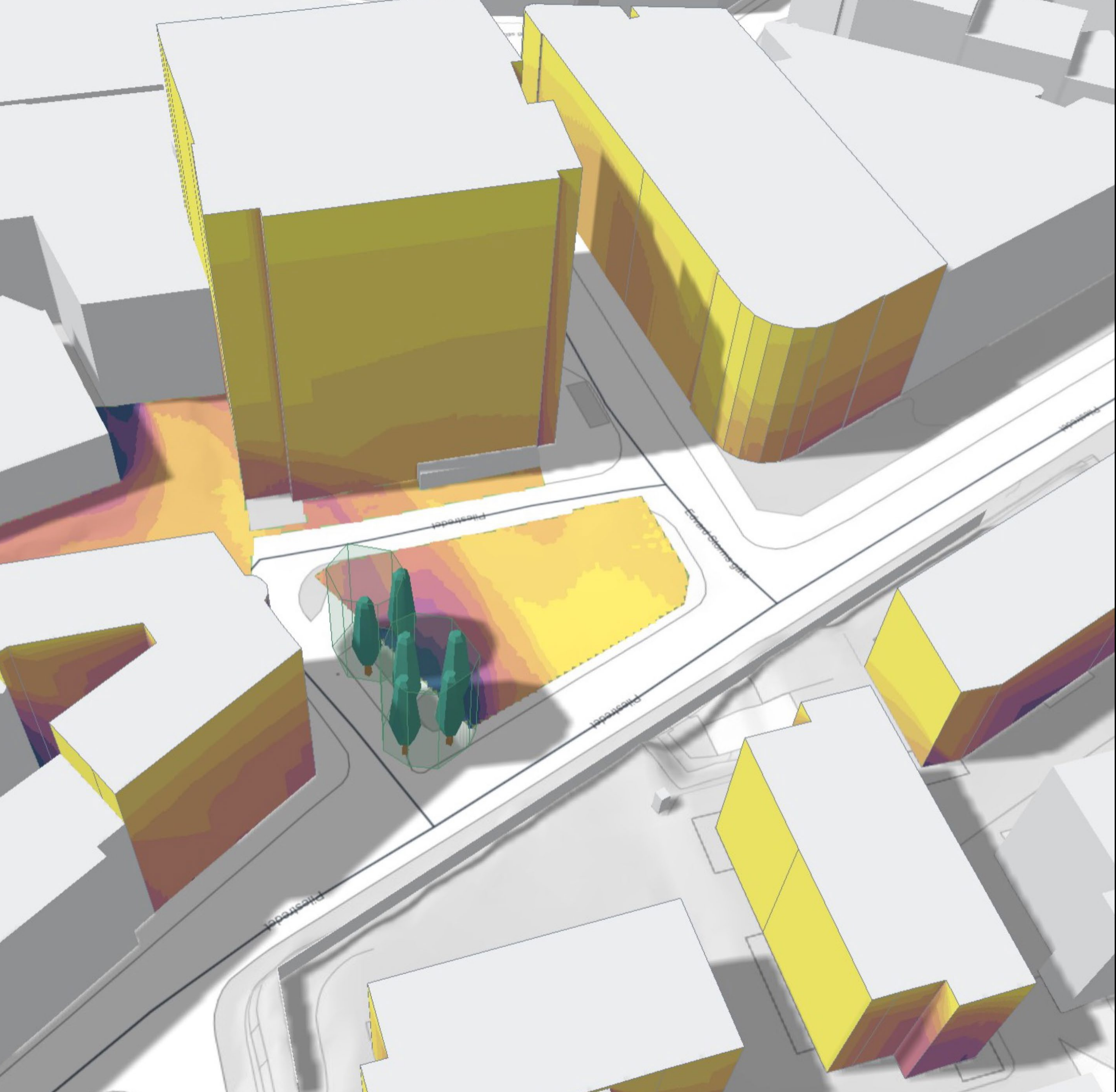
# Edit your site

Easily add relevant information into your project such as traffic data for roads, areas of interest, vegetation, and adjusted terrain.

Explore new sites and bid for more projects







Create your project

01

Edit your site

02

Analyze existing site conditions

03

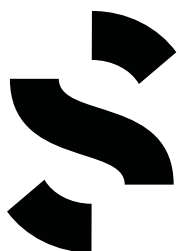
Understand the site potential

04

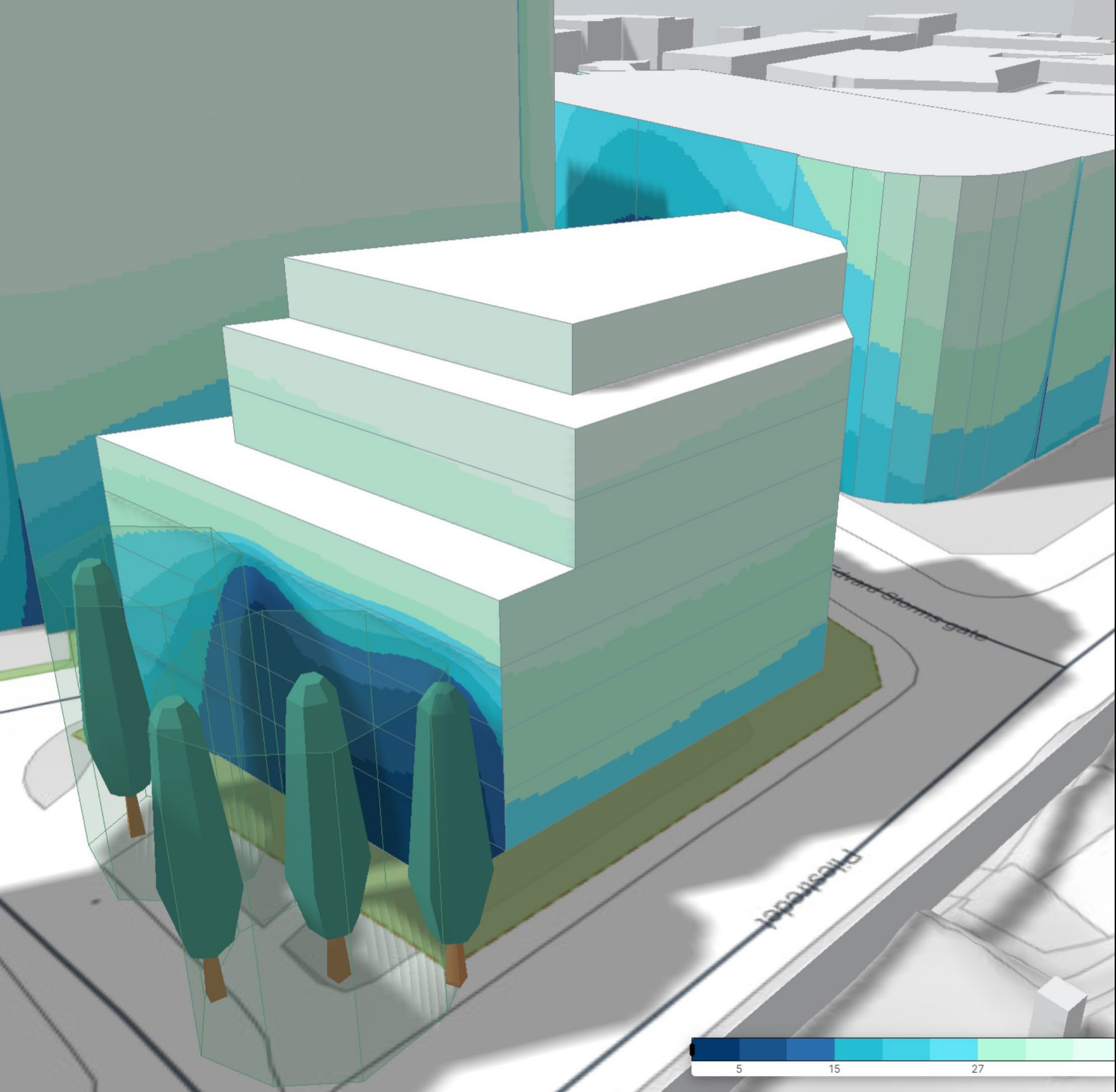
# Analyze existing site conditions

Get area statistics, and filter qualities by functions.  
Meet the needs of your prospect with confidence.

Explore new sites and bid for more projects







Create your project

01

Edit your site

02

Analyze existing site conditions

03

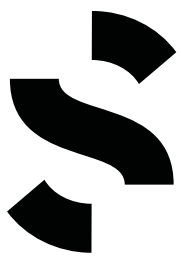
Understand the site potential

04

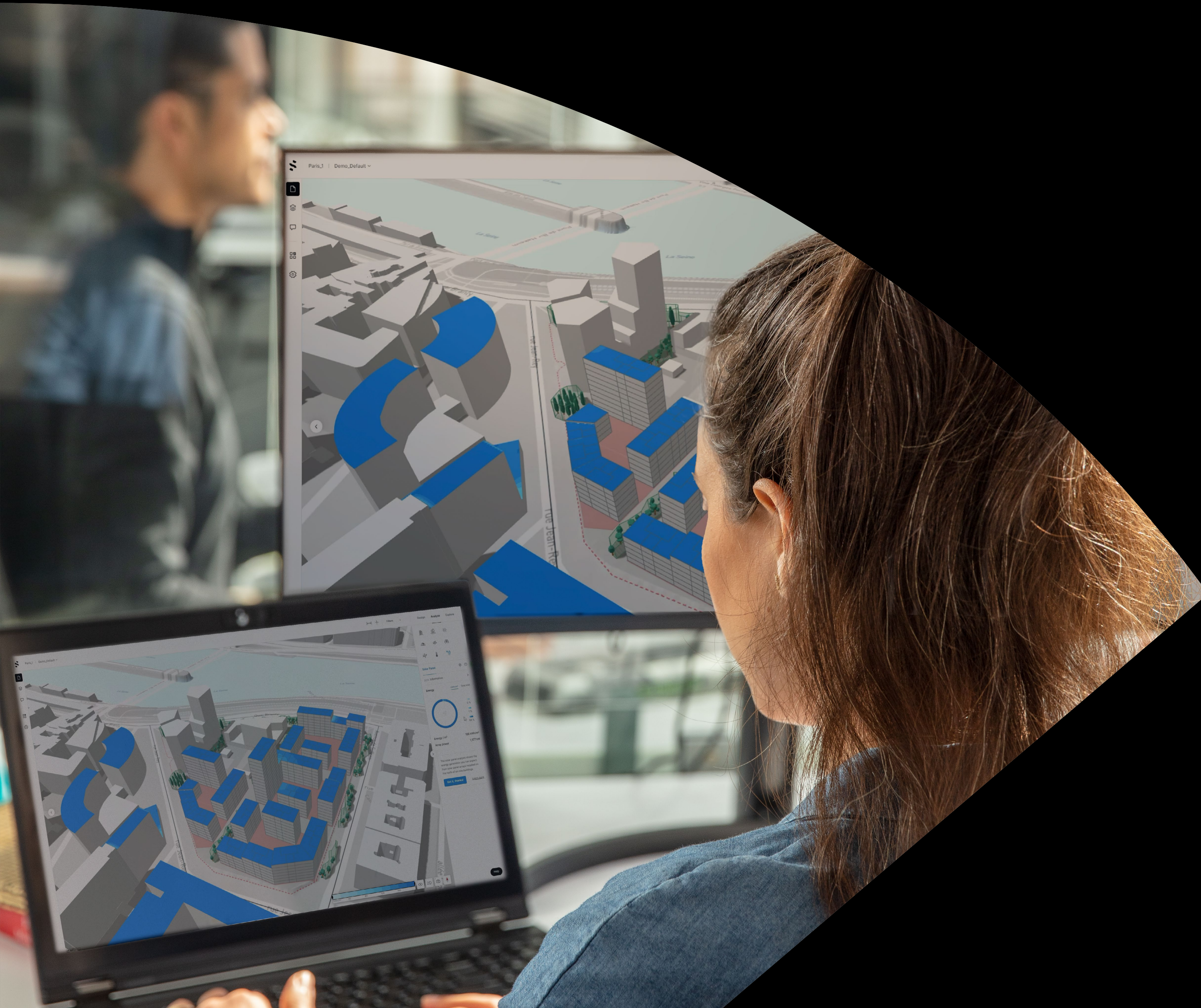
# Understand the site potential

Mass out your design to get analyses on proposals at any stage. Prove your design will stand the test of time.

Explore new sites and bid for more projects







## 02. Examine prospects. Perform due diligence.

When it's time for due diligence, Spacemaker helps you quickly understand the strengths and weaknesses of existing urban proposals. Have the proof that you'll reach the maximum potential that the site allows while optimizing for both density and living conditions. Feel more confident in your discussions with developers and municipal authorities alike—be they about targets or regulations—with the right insights to prove and strengthen your arguments.







Upload a reference

01

Model the proposal

02

Program your site

03

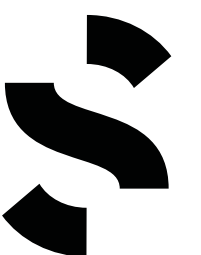
Understand the potential

04

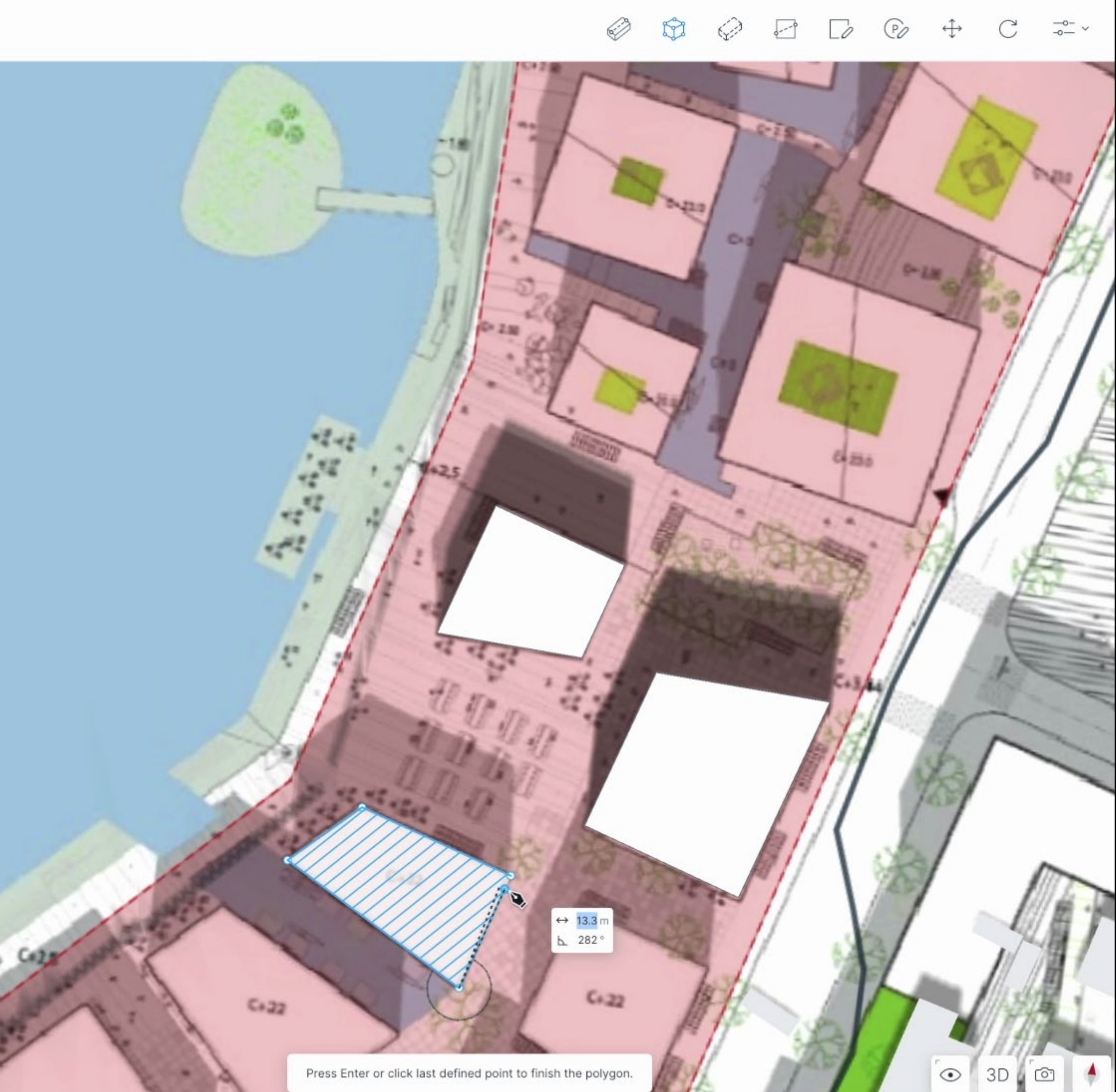
## Upload a reference

Import your reference image and triangulate your prospect's plan and use it as an underlay for your Spacemaker proposal.

Explore new sites and bid for more projects







Upload a reference

01

Model the proposal

02

Program your site

03

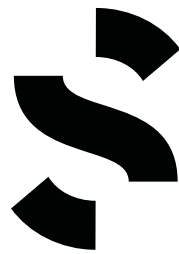
Understand the potential

04

# Model the proposal

Use the underlay as a reference to help you model the proposal. Use the building modelling tools to swiftly block out the massing of your reference.

Explore new sites and bid for more projects







Press ↵ or double click to edit.

2D



Upload a reference

01

Model the proposal

02

Program your site

03

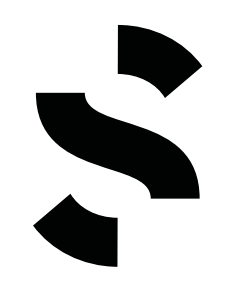
Understand the potential

04

# Program your site

Get area statistics and filter qualities by functions in Analyze. Meet the program needs of your prospect.

Explore new sites and bid for more projects





↔

⊙

Filters

Design

Analyze

Explore

🏢

🌱

☀️

🌧️

📶

🔗

🔄

🌡️

🌀

Area

Units

Parking

⚙️

?

Site area

12,196 m²

▼ BTA

251 %

30,552 m²

🟠 Hotel

6,166 m²

🟡 Commercial

1,218 m²

🟢 Residential

23,168 m²

▼ BRA

225 %

27,497 m²

🟠 Hotel

5,549 m²

🟡 Commercial

1,097 m²

🟢 Residential

20,851 m²

> BRAs

203 %

24,747 m²

🖱️ BYA

40 %

4,879 m²

Building height

⬆ 20.0 m

⬆ 30.0 m

Buildable area

12,196 m²

Facade area

18,889 m²

Functions (3)

🟡 🟢 🟠 >

Area types (2)

🟢 🟡 >

👁

2D

📷

🧭

Help

🏠

<

>

Upload a reference

01

Model the proposal

02

Program your site

03

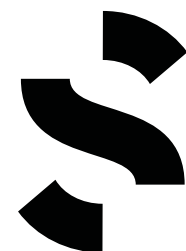
Understand the potential

04

Understand the potential

Read key statistics and understand the utilization potential of your project. Swiftly decide if the sales prospect presented is feasible on the site.

Explore new sites and bid for more projects





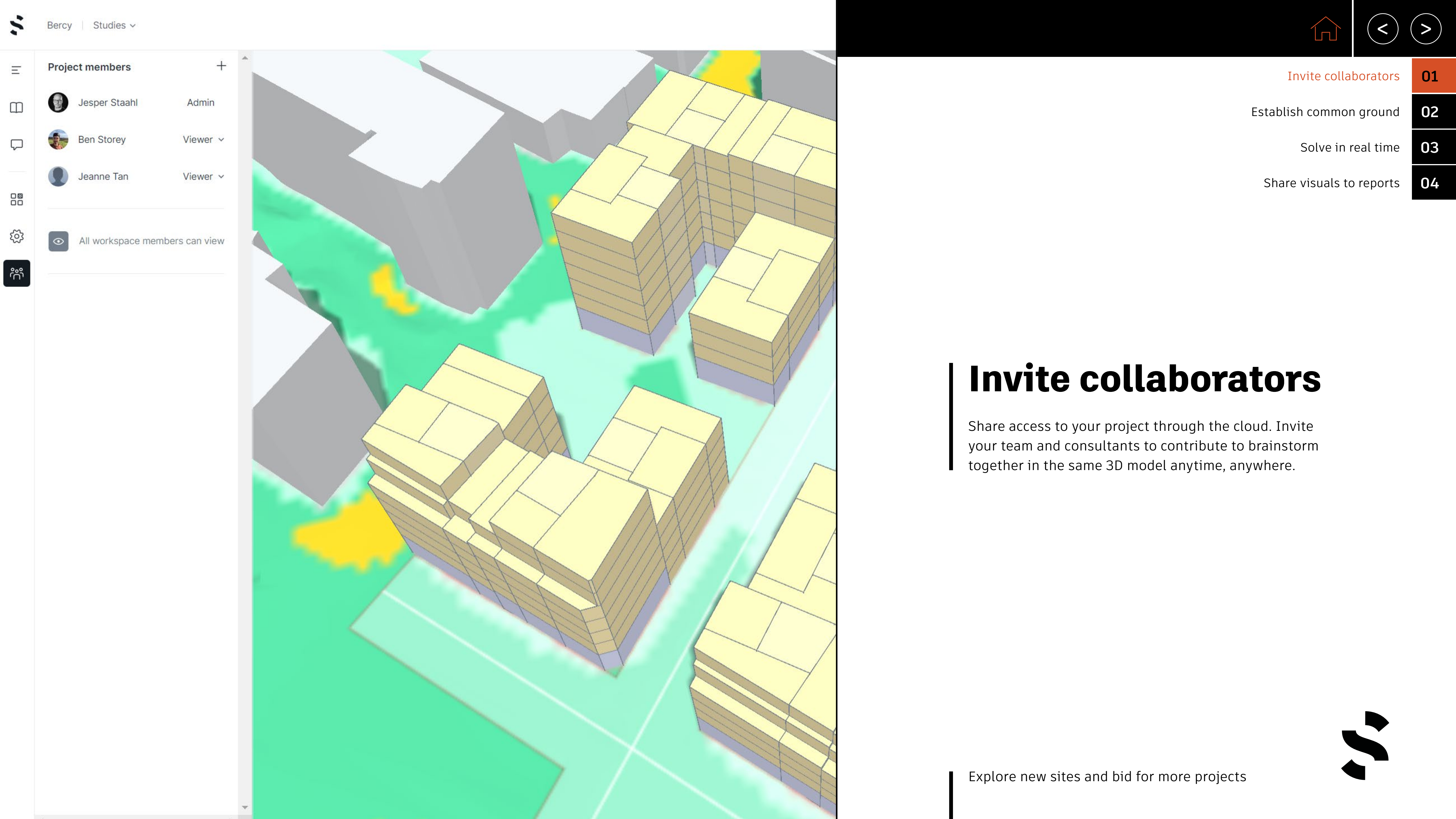


## 03. Communicate clearly. Assure buy-in.

Communicate your designs masterfully with Spacemaker. Use a truly collaborative tool—where everyone can easily compare proposals and see the consequences. With supporting evidence and clear, understandable visuals at hand facilitates smoother discussions with developers, planning authorities, the public, consultants, and any other stakeholders. The right data by your side can assure buy-in from stakeholders as early as possible and reduce risks across all your projects.







Project members +

 Jesper Staahl Admin

 Ben Storey Viewer ▾

 Jeanne Tan Viewer ▾

 All workspace members can view

Invite collaborators

Establish common ground

Solve in real time

Share visuals to reports

01

02

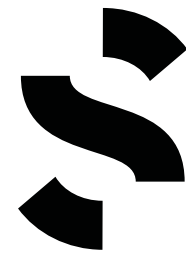
03

04

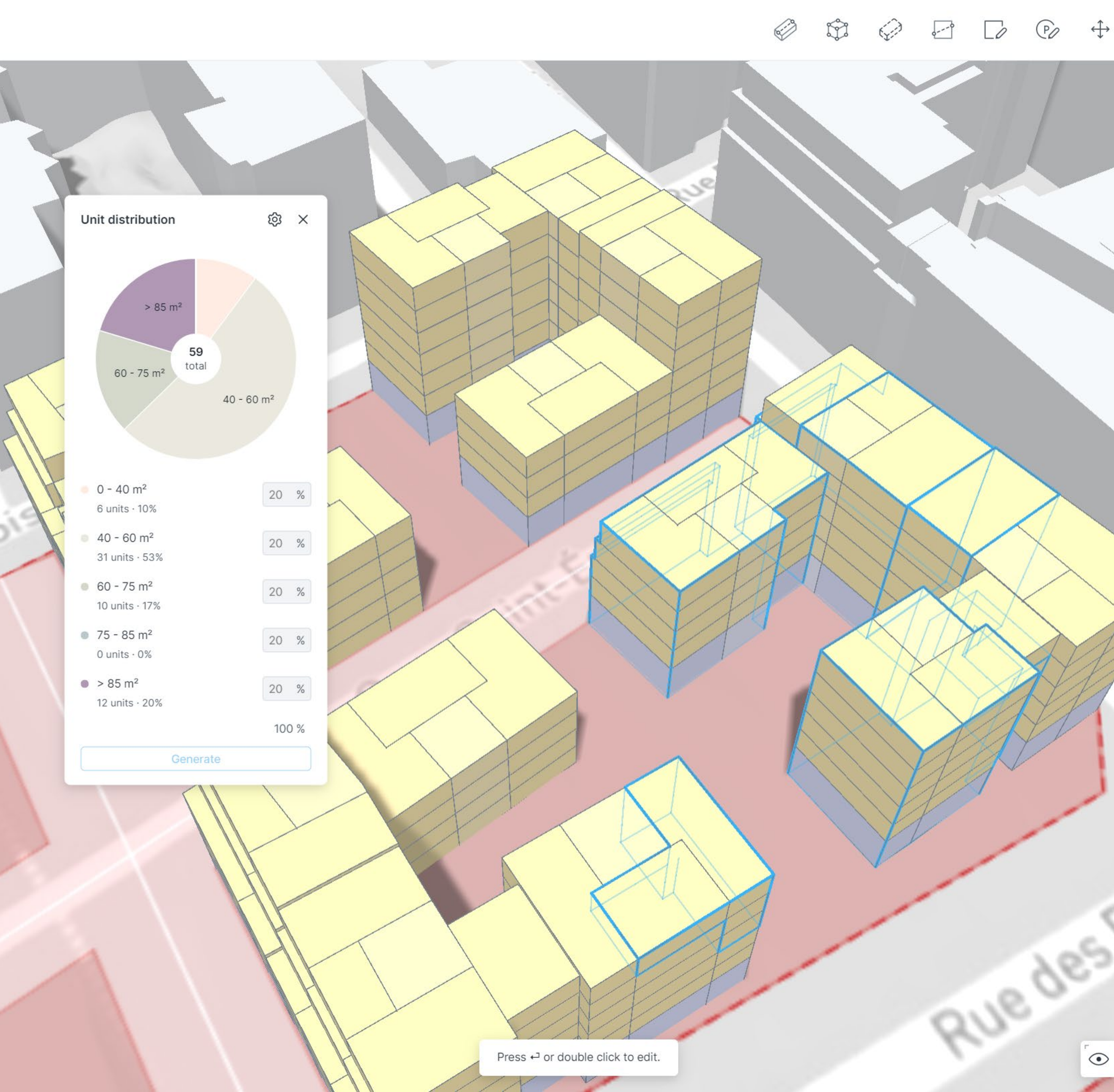
# Invite collaborators

Share access to your project through the cloud. Invite your team and consultants to contribute to brainstorm together in the same 3D model anytime, anywhere.

Explore new sites and bid for more projects







Invite collaborators

01

Establish common ground

02

Solve in real time

03

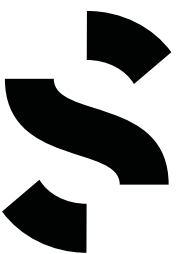
Share visuals to reports

04

# Establish common ground

Start your designs in Spacemaker to kickstart your collaborative building design process.

Explore new sites and bid for more projects







Invite collaborators

01

Establish common ground

02

Solve in real time

03

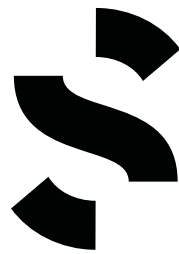
Share visuals to reports

04

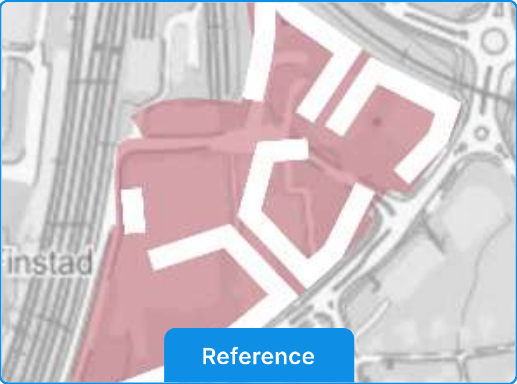
# Solve in real time

Share analysis results with consultants and discuss solutions to challenge while iterating your design in real time.


Explore new sites and bid for more projects








prop\_q1: Generated  
Masterplan June



prop\_t1: Park\_copy2  
Masterplan June



prop\_t1: Generated  
Masterplan June

Area						
Site area		36,698 m²		36,698 m²		36,698 m²
> BTA	<div></div>	76,382 m²	<div></div>	76,506 m²	<div></div>	74,754 m²
▼ BRA	<div></div>	70,933 m²	<div></div>	71,489 m²	<div></div>	69,705 m²
• Residential	<div></div>	70,933 m²	<div></div>	71,489 m²	<div></div>	69,705 m²
> BRAs	<div></div>	58,767 m²	<div></div>	60,809 m²	<div></div>	58,430 m²
Buildable area		36,698 m²		36,698 m²		36,698 m²

Buildings						
Number of living units	<div></div>	876	<div></div>	770	<div></div>	828
Facades	<div></div>	40,676 m²	<div></div>	36,978 m²	<div></div>	37,396 m²

Outdoor area						
<div>GroundRoofAllM...01:00 – 22:00Filters</div>						
Outdoor area						
Target	<div></div>	14,187 m²	<div></div>	14,298 m²	<div></div>	13,941 m²
Achieved	<div></div>	25,256 m²	<div></div>	21,812 m²	<div></div>	22,080 m²
Sunlit outdoor area						
Target	<div></div>	7,093 m²	<div></div>	7,149 m²	<div></div>	6,970 m²
Achieved	<div></div>	4,510 m²	<div></div>	3,688 m²	<div></div>	3,758 m²

Sun						
<div>00:00 – 24:00</div>						
March 21						
> Facade	<div></div>		<div></div>		<div></div>	
> Ground	<div></div>		<div></div>		<div></div>	
> Roof	<div></div>		<div></div>		<div></div>	
> Surrounding buildings	<div></div>		<div></div>		<div></div>	

Home

<

>

01

02

03

04

Invite collaborators

Establish common ground

Solve in real time

Share visuals to reports

Share visuals to reports

Export clear visuals from Spacemaker, with metrics and comparisons, to better communicate your solutions to external stakeholders.

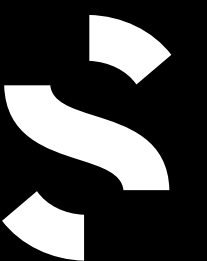
Explore new sites and bid for more projects



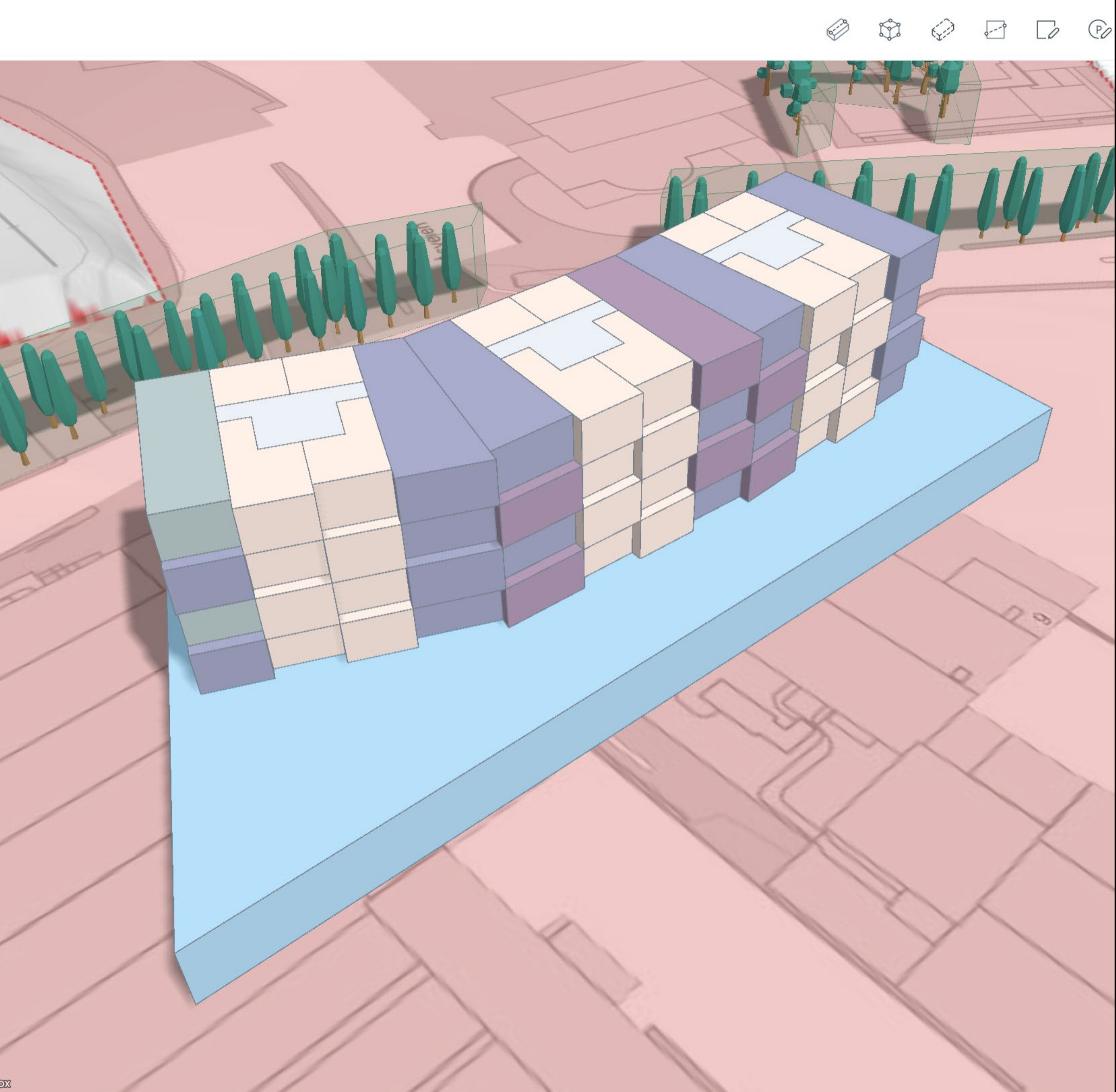


## 04. Benchmark and develop – simultaneously.

While using Spacemaker, you can take the great foundation you've created for your proposal and continue developing it directly in Revit—with minimal loss of information. This is essential when moving from schematic design to concept development. Bring detailed concepts back into Spacemaker to check that you're still on track with your design.







Export your model to Revit

01

Keep iterating on your concept

02

Analyze as you iterate

03

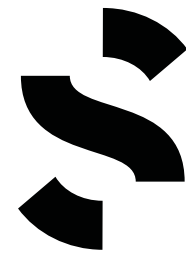
Share visuals to reports

04

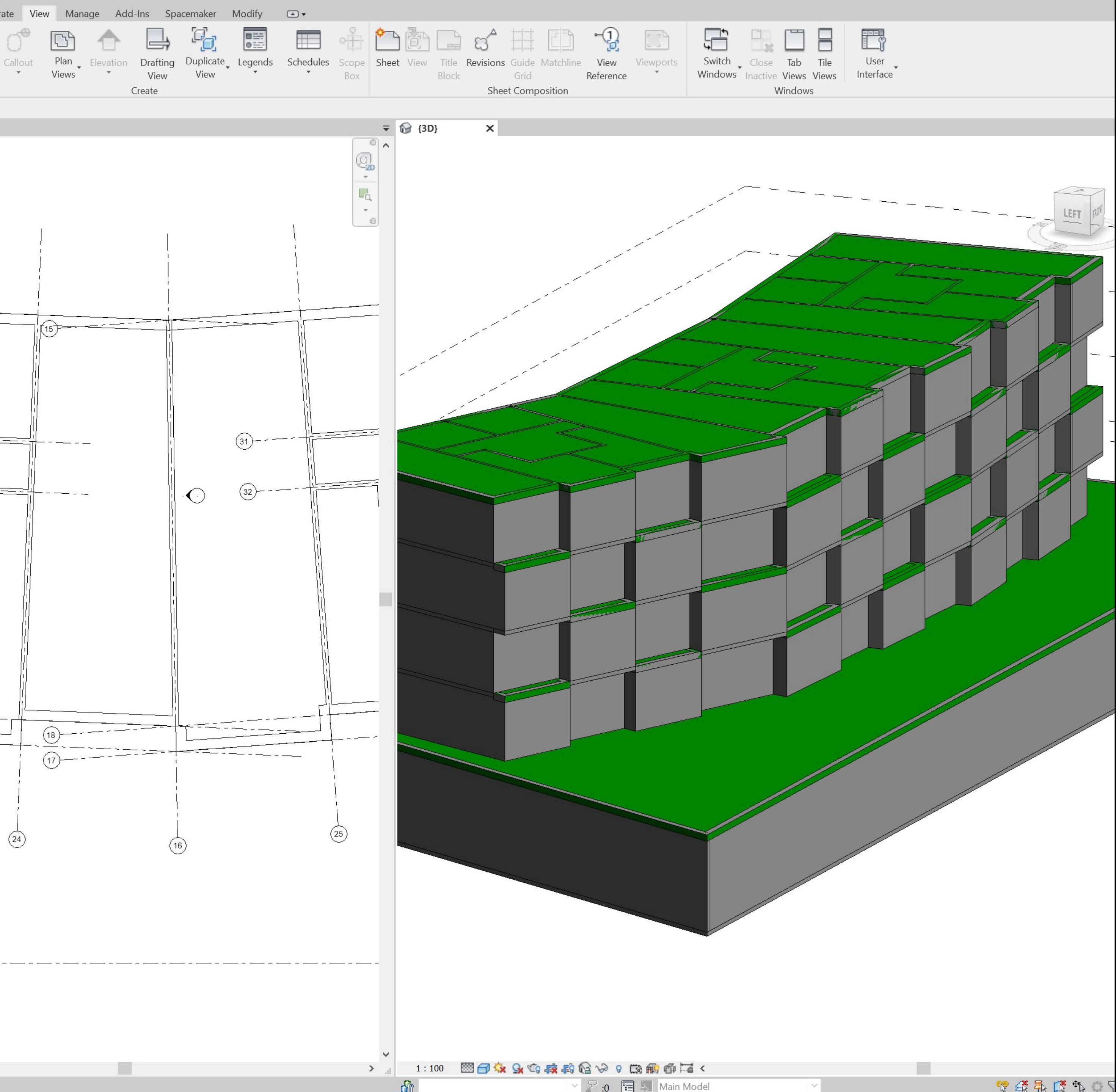
# Export your model to Revit

Easily bring your concept massing model from Spacemaker to Revit.

Explore new sites and bid for more projects







Export your model to Revit

01

Keep iterating on your concept

02

Analyze as you iterate

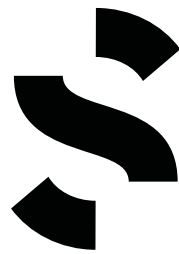
03

Share visuals to reports

04

# Keep iterating on your concept

Continue to evolve your concept—directly in Revit.



Explore new sites and bid for more projects





Export your model to Revit

01

Keep iterating on your concept

02

Analyze as you iterate

03

Share visuals to reports

04

All proposals ▾



prop\_q1

last month



prop\_2b copy 2

2 months ago



prop\_75

2 months ago



prop\_2b

2 months ago



prop\_2b copy

Layers



Unspecified



Untitled

Edit



Site limit



Buildable area



Existing buildings



Surrounding buildings



Outdoor area



Vegetation



Building pads



View to area



Roads and rails



Screens

Assets



# Analyze as you iterate

Check back on your performance analytics with mesh imported IFCs in Spacemaker.

Explore new sites and bid for more projects







Export your model to Revit

01

Keep iterating on your concept

02

Analyze as you iterate

03

Share visuals to reports

04

# Bring your design with you

Minimize data loss when you bring your concept massing model from Spacemaker, to complete your BIM projects.

Explore new sites and bid for more projects







An  **AUTODESK** product