



# 34 AutoCAD LT tips every user should know

## SETUP & BASICS

1. Keyboard Shortcuts
2. Autosave
3. Quick Access Toolbar
4. Right-click
5. Layers
6. Draw Order

## VIEWING

7. Zoom
8. Display Plot Styles
9. Shared Views

## OBJECTS

10. Object Snaps
11. Isolate Objects
12. Associative Arrays
13. Dimensions

## MODIFYING

14. Blocks Palette
15. Dynamic Blocks
16. Group
17. Drawing Compare & Drawing History

## ANNOTATION

18. Multiline Text
19. Spell Checker
20. Find and Replace
21. QuickCalc
22. Annotation Monitor

## DATA MANAGEMENT

23. External References
24. eTransmit
25. PDF Import
26. Sheet Set Manager

## ECOSYSTEM

27. AutoCAD on the web
28. AutoCAD on your mobile device

## AUTOMATION AND COLLABORATION

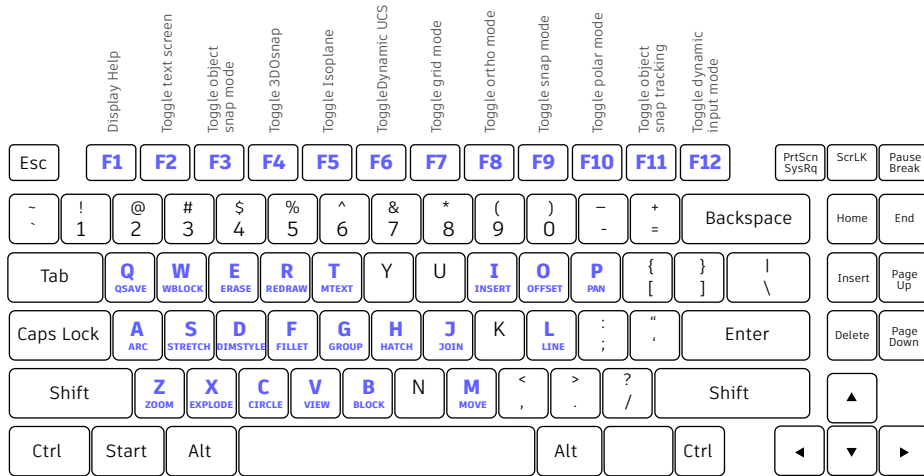
29. Count
30. Sharing Your Drawing Files
31. Trace
32. Floating Windows

## MINDSET

33. Make Mistakes
34. You Do You



# **Setup & basics**

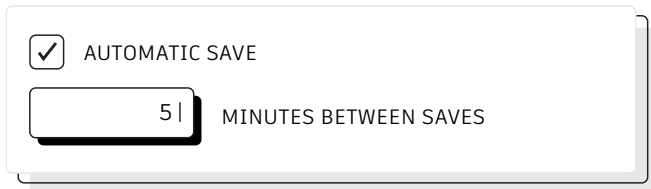


## Keyboard shortcuts

Take advantage of AutoCAD-LT-specific keyboard shortcuts to save you valuable time. You can even create or modify the existing shortcuts.

1. Click Manage tab > Customization panel > User Interface, or type CUI into the command line.
2. In the Customize tab, Customization in All Files pane, click the plus sign (+) next to the Keyboard Shortcuts node to expand it.
3. Click the plus sign (+) next to the Shortcut Keys.
  - To create a shortcut key, in the Command List pane, drag a command to the Shortcut Keys node in the Customization in All Files pane.
  - To modify a shortcut key, select a shortcut key from under the Shortcut Keys node.

## FILE SAFETY PRECAUTIONS



AUTOMATIC SAVE

MINUTES BETWEEN SAVES

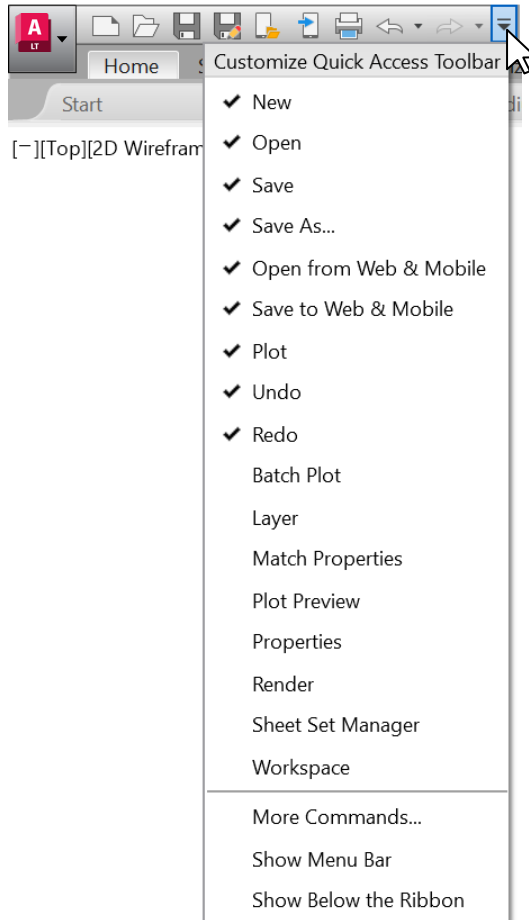
## Autosave

**Set your Autosave setting to 5 minutes (or 2 or 3 minutes!), and manually save often with the QSAVE command or Ctrl+S shortcut.**

Automatic save files are backup files created automatically by the Autosave feature. Set the number of minutes between automatic saves in the Open and Save tab in the Options dialog box or by using the SAVETIME command. Automatic saves are only done if a drawing has been modified after the last save. QSAVE, SAVE, and SAVEAS will delete the current .sv\$ file – the Autosave file only remains if the application closes unexpectedly.

Find the location of your autosave files by going to the Files tab in the Options dialog box and inspecting the Automatic Save File Location folder in the hierarchy, or by using the SAVEFILEPATH command. Once you find the file, change the file extension from .sv\$ to .dwg to open.

**BONUS:** If you don't see any file extensions when looking for your Autosave file, you'll need to turn them on. Do so by checking the File Name Extensions box in the Show/Hide panel of the View tab.

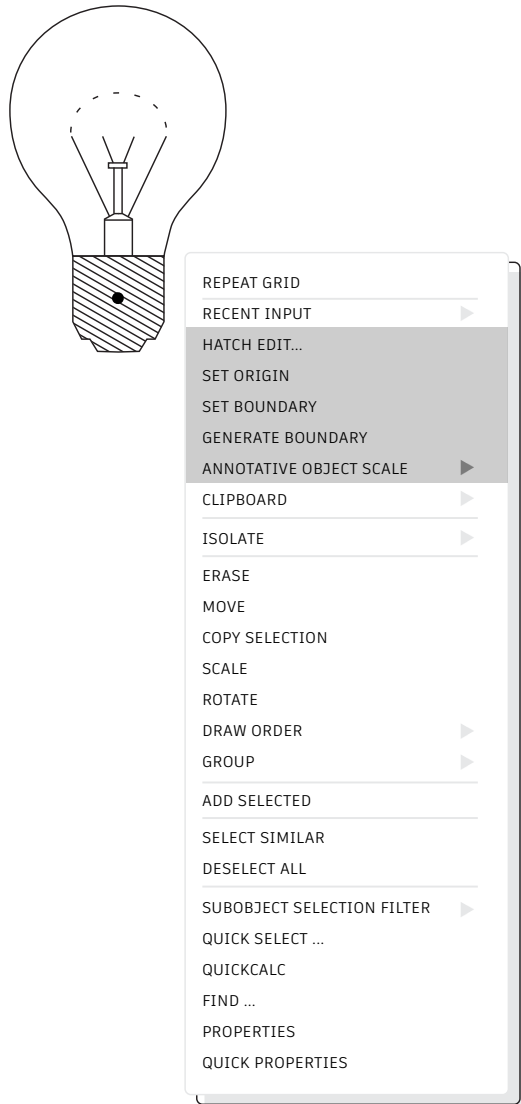


## Quick Access Toolbar

Keep your most frequently used tools in the Quick Access Toolbar (QAT) right at the top of your screen. Customize the QAT by clicking the small, pull-down control button on the right. You can check and un-check the commands you want quick access to.

Here, you can also change where the Quick Access Toolbar docks, or even turn on the old-style Menu Bar. You can also drag the elements within the Quick Access Toolbar to change the order in which they appear.

**BONUS:** For a fast way to add a Ribbon command to the Quick Access toolbar, right-click any command icon on the Ribbon, and then select Add to Quick Access Toolbar from the popup menu. Similarly, right-click on any Quick Access Toolbar item to remove it.

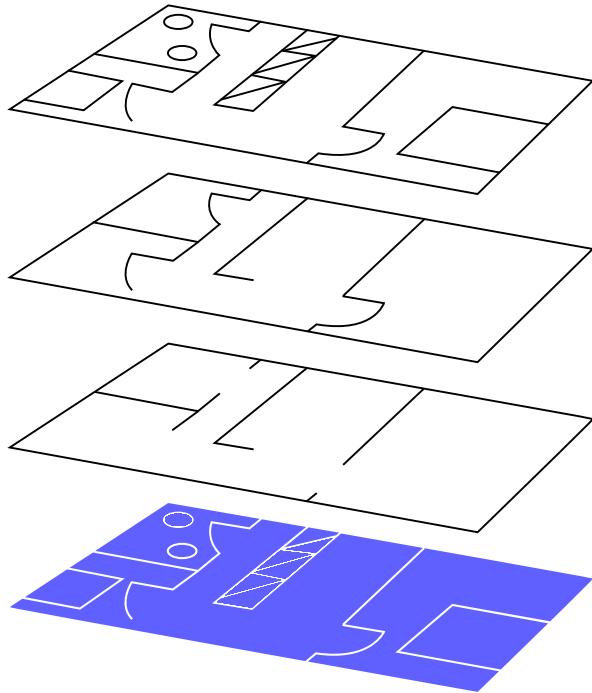


## Right-click

**Right-click to access contextual popup menus, a productivity enhancement favorite. Since the menus are contextual, you get commands that are specific to what's selected.**

If you're someone who uses a mouse right-click as ENTER, you can still have the best of both worlds. It's easy using this time sensitive right-click feature. To turn it on, simply call up the Options dialog box, go to the User Preferences tab, and then select the Right-Click Customization button. You'll get a second dialog box that contains the control for time-sensitive right-clicks.

When enabled, right-click will still function as you prefer, with a single, quick click working as ENTER, but now, by holding down the mouse button just a little longer – a quarter of a second by default – you'll get the contextual popup menu instead.



## Layers

**Resist the temptation to create everything on one layer. Organize your drawings by assigning objects to layers that are associated with a specific function or purpose, for example, walls on one layer and doors on another layer.**

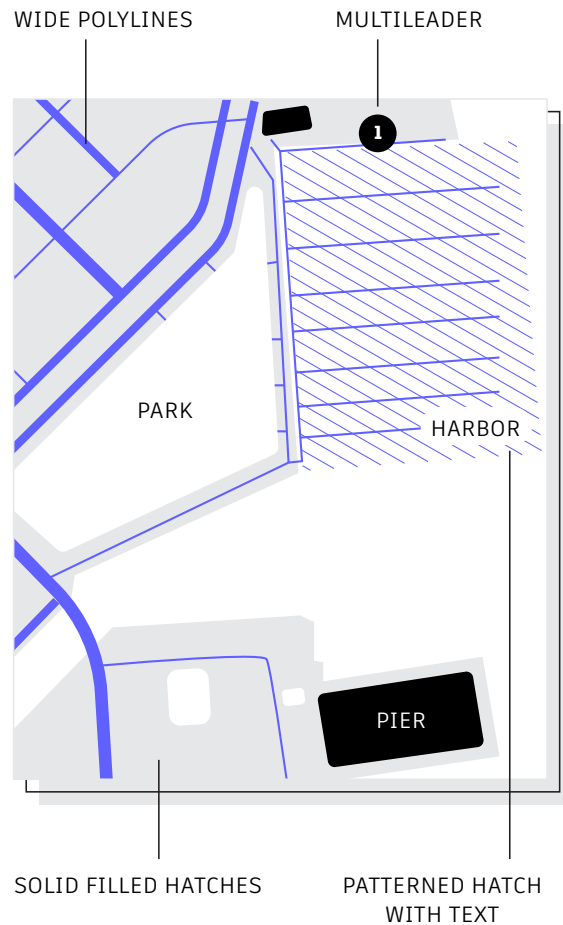
With layers, you can:

- Associate objects by their function or location
- Display or hide all related objects in a single operation
- Specify linetype, color, line weight, and other standards for each layer

To see how a drawing is organized, use the LAYER command to open the Layer Properties Manager. You can either enter LAYER or LA in the Command window, or you can click the Layer Properties tool on the Home tab of the Ribbon.

**BONUS:** Got lots of Xrefs and therefore lots of layers? Increase the MAXSORT variable (from its default of 1000) so all your layers can sort correctly.





## Draw order

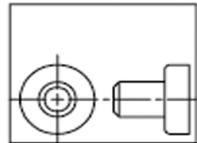
Control how objects overlap and the order in which they're displayed with the **Draw Order** command. Set up your Draw Order with “Bring Annotations to Front” and “Send Hatch to Back”.

In the Home tab of the Ribbon, click the Modify panel drop-down list, and select Draw Order (or use the DRAWORDER command). Choose one of the displayed options, select the objects you want to modify, and press Enter.

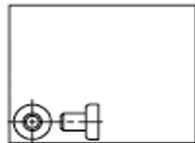
In general, you will want to display and plot annotation objects in front of other objects, and hatches and fills behind. Wipeout objects are intended to provide a blank area for adding text without modifying the objects underneath.

**NOTE:** You can control the draw order of overlapping objects only within the same space: model space or paper space.

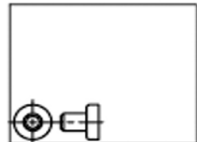
**Viewing**



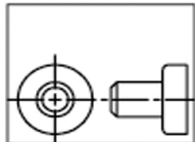
before ZOOM All



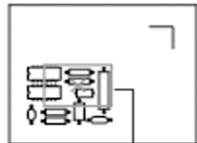
after ZOOM All



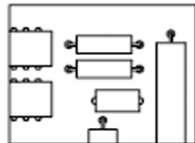
before ZOOM Extents



after ZOOM Extents



view box



new view

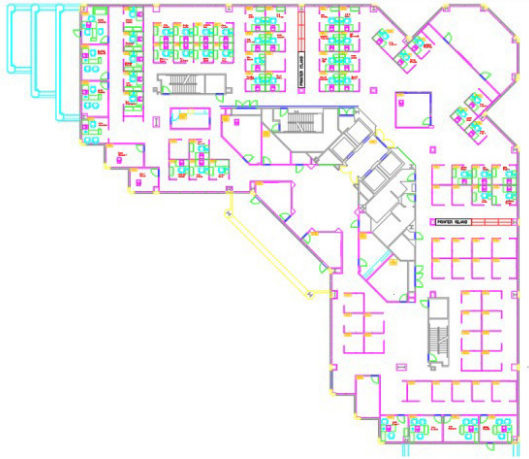
## Zoom

Follow the prompts displayed after the **ZOOM** command to view your drawing exactly how you wish. “**ZOOM > All**” adjusts the magnification of the drawing area to show all visible objects or the drawing limits set with the **LIMITS** command. “**ZOOM > Extents**” displays the maximum extent of all objects.

“**ZOOM > Dynamic**” pans and zooms using a rectangular view box. The view box represents your view, which you can shrink or enlarge and move around the drawing. Positioning and sizing the view box pans and zooms to fill the viewport with the view inside the view box. (This is not available in perspective projection.)

**BONUS #1:** If you have a mouse with a wheel, double-click the mouse wheel to activate Zoom Extents.

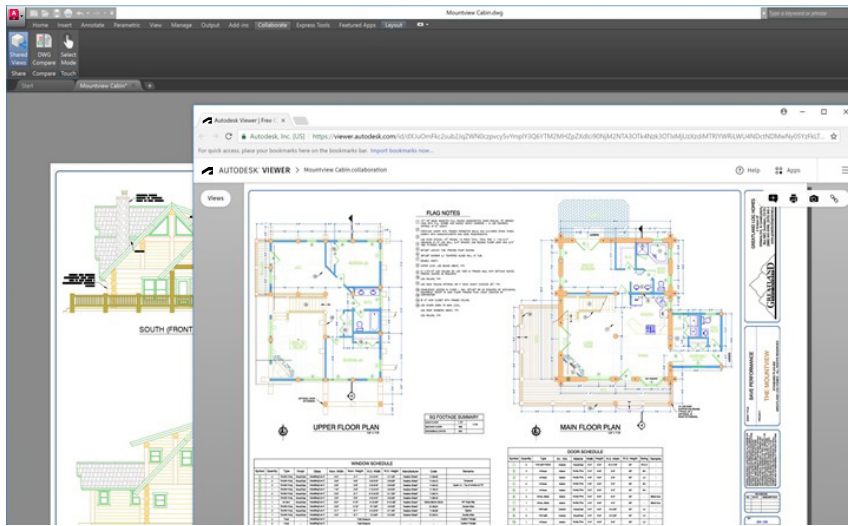
**BONUS #2:** Use the command **VTENABLE** to turn off smooth view transitions which occur during panning and zooming. Setting it to 0 (zero) turns it off for pan/zoom, rotation, and scripts.



## Display plot styles

**View your drawing in AutoCAD LT as it's going to look when it's printed by selecting "Display Plot Styles" in the Page Setup dialog box.**

AutoCAD LT displays drawings in color and then translates the drawing data to a different printed format. Typically, we need to do a plot preview to see what the layout is going to look like when plotted, but you can change this via Display Plot Styles. Set your main layout in this way or create a separate layout to act as a "live" preview so that you can still work in your traditional colored layout view.



## Shared views

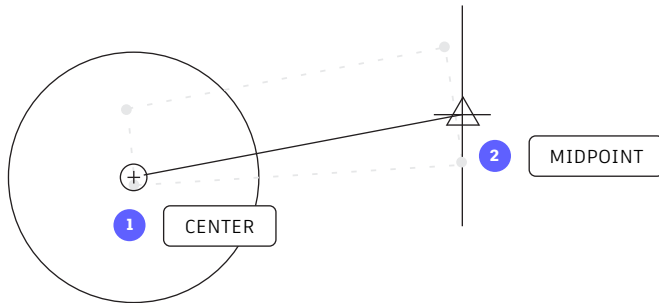
Share designs easily within or outside your company using the Shared Views feature – without releasing your original DWG files. Instead of a PDF, share a link that can be viewed and commented on in any browser.

Avoid the cumbersome commonly-used workflow of publishing and emailing designs via DWF or PDF files. Instead, a viewable file is created in AutoCAD LT and circulated via a shareable link that can be viewed and commented on in the browser of any device with internet access. Comments that collaborators make on the shared link appear right back in your AutoCAD LT desktop product.

The Shared Views feature can be accessed from AutoCAD LT's Application menu, under Publish.

**NOTE:** Shared Views automatically expire after 30 days, but you can extend or terminate the link at any time.

# Objects



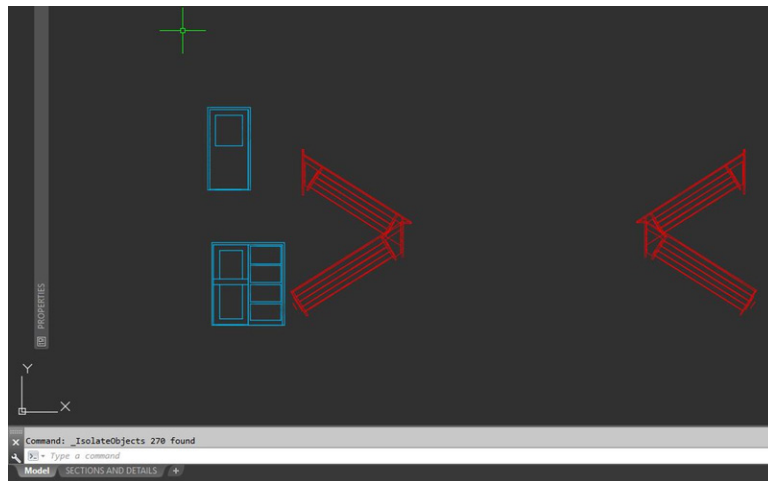
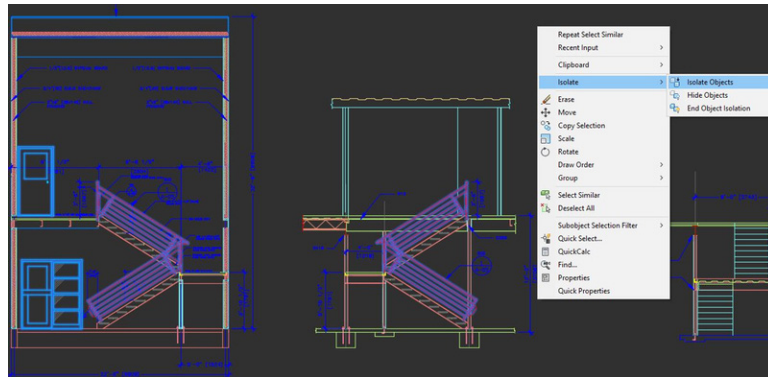
## Object snaps

**Use Object Snaps (OSNAP) to draw objects precisely in relation to other objects in your drawing. For example, you can use object snaps to create a line from the center of a circle to the midpoint of another line.**

You can specify an object snap whenever you are prompted for a point. By default, a marker and a tooltip are displayed when you move the cursor over an object snap location.

To specify an object snap at a prompt for a point, you can:

- Press Shift and Right-click to display the Object Snap shortcut menu
- Right-click and choose an object snap from the Snap Overrides submenu
- Enter the name of an object snap
- Click an object snap button on the Object Snap toolbar. This will turn on running object snaps that will persist through all subsequent commands.



## Isolate objects

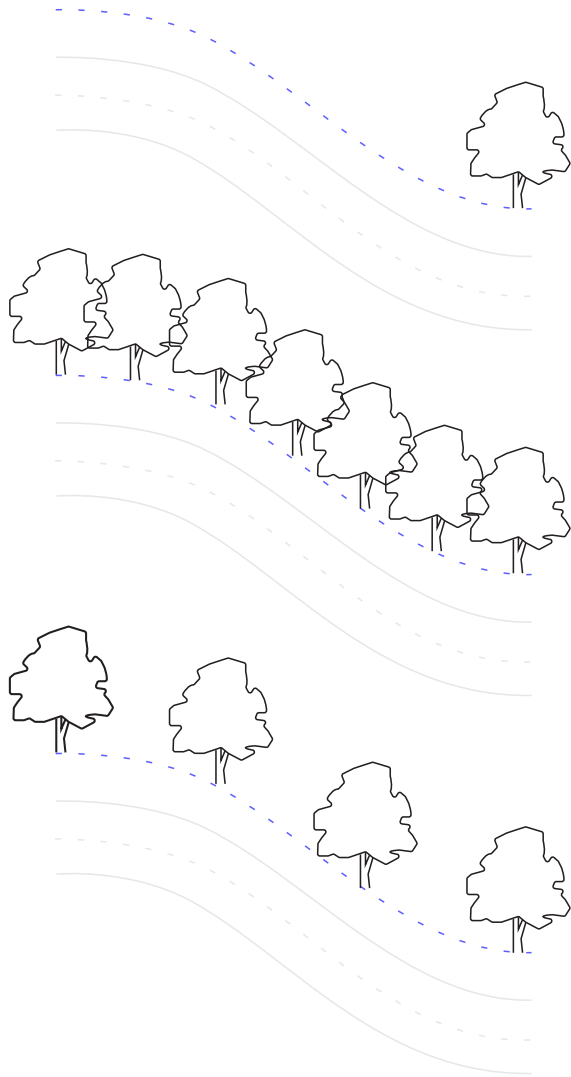
Isolate a selected group of objects for easier editing in complicated or busy drawings. The **Isolate Objects tool (ISOLATEOBJECTS)** makes non-selected objects in the drawing temporarily invisible.

Start this command from the Right-click menu or by typing ISOLATEOBJECTS into the command line. When you are finished editing or working in the cleaned area of your drawing, you can end your object isolation and bring back any hidden objects simply by using the UNISOLATEOBJECTS command or End Object Isolation right-click option.

**BONUS #1:** Hide objects instead to clear up an area of a busy drawing by using the HIDEOBJECTS command or in the right-click menu to temporarily suppress selected objects.

**BONUS #2:** By default, hidden or isolated objects are temporary during your current drawing session. However, if you set OBJECTISOLATIONMODE to 1, the hidden or isolated objects will persist between sessions.





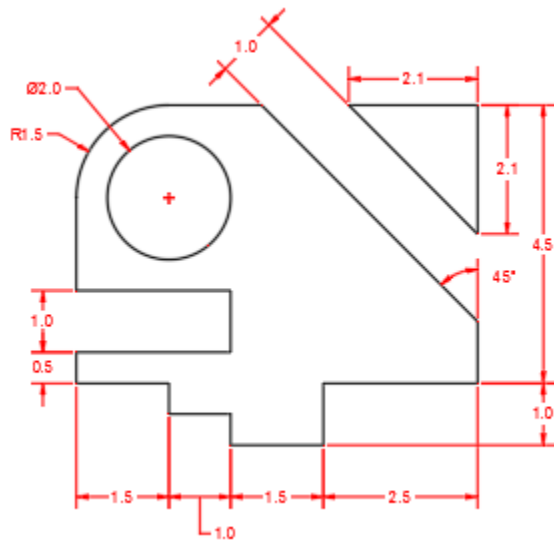
## Associative arrays

**Use associative arrays, where objects within arrays retain their relationships. It's incredibly easy to make adjustments to an array pattern, spacing, and location – and much faster than changing the location of individual objects.**

Many designs contain symmetrical or repeatable patterns. Repeatable patterns, also known as arrays, can be created using the ARRAY command. Associative arrays make it easy to create rectangular and polar patterns along with distributing items along a 2D path.

Once an associative array has been created, you can:

- Replace all instances of the original object
- Replace or edit individual objects in an array
- Update the number of and distance between items in an array



## Dimensions

Save time by using the single DIM command to create one dimension after another without interruption and without typing multiple commands.

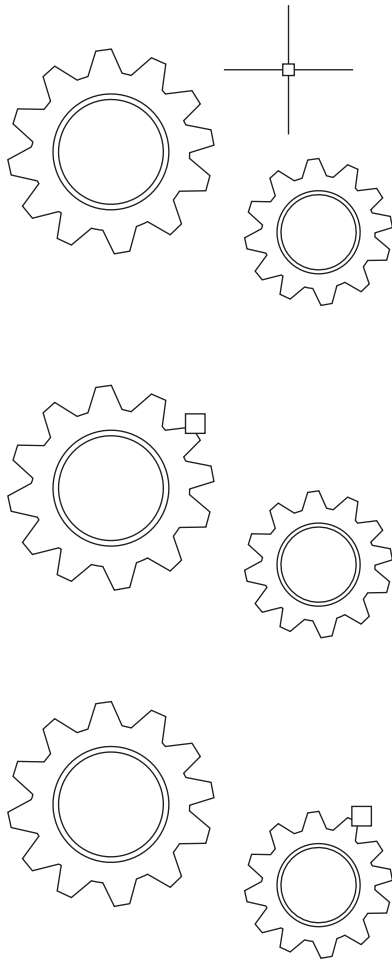
Type DIM into the command line or find the Dimension tool in the Annotate tab of the Ribbon. This command allows you to achieve different results with a combination of:

- The DIM option you choose
- The type of object you hover over
- Where you hover over an object
- Where you pick or click
- What direction you move the cursor

The smart dimensioning tools also allow you to pass the cursor over an object and see a preview of the dimension before you create it.

**BONUS:** Cut more time out of your workflow by using the QDIM command to apply dimensions to an entire series of objects at once.

**Modifying**



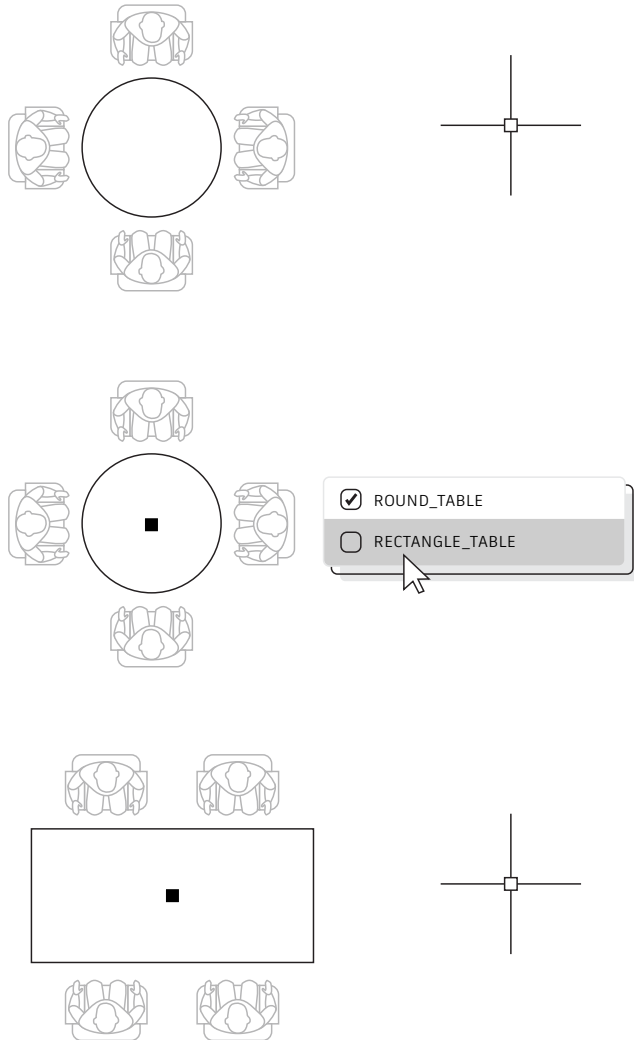
## Blocks Palette

### Insert Blocks more efficiently with the new Blocks Palette.

Easily find the blocks you need with thumbnail icons that provide a preview of available Blocks to insert.

The Palette's four tabs allow you quick access to find the Block you need. You can find blocks from the Current Drawing, from Recent Drawings, from a set of your Favorites, or from your Block Libraries.

No matter what tab you're working in, you'll still have access to all your familiar insertion options, such as scale, angle, rotation, etc. You can even check the Repeat Placement option to save additional steps.

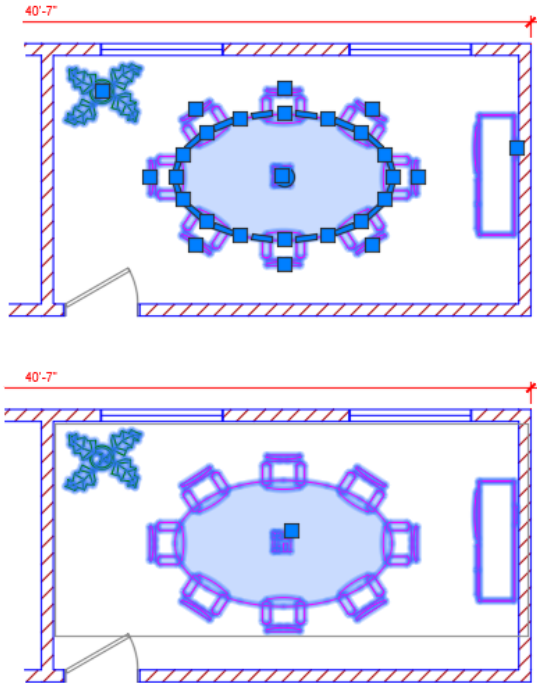


## Dynamic blocks

**Save time and decrease file size by utilizing Dynamic Blocks. Create one block that can change shape, size, or configuration depending on their usage instead of inserting multiple static blocks.**

For example, instead of creating multiple blocks for different table types and chair settings, you can create one table block. Once the block is inserted, you can select the table type at any time. You can also define dynamic blocks that can be stretched, rotated, flipped, and more.

1. Click Insert tab > Block Definition panel > Create Block.
2. Back in the drawing, double-click the block and select OK on the Edit Block Definition dialog. This opens the Block Editor environment and the Block Editor Ribbon tab.
3. Add constraints, actions, and parameters (rules) using the Properties palette from within the Block Editor.

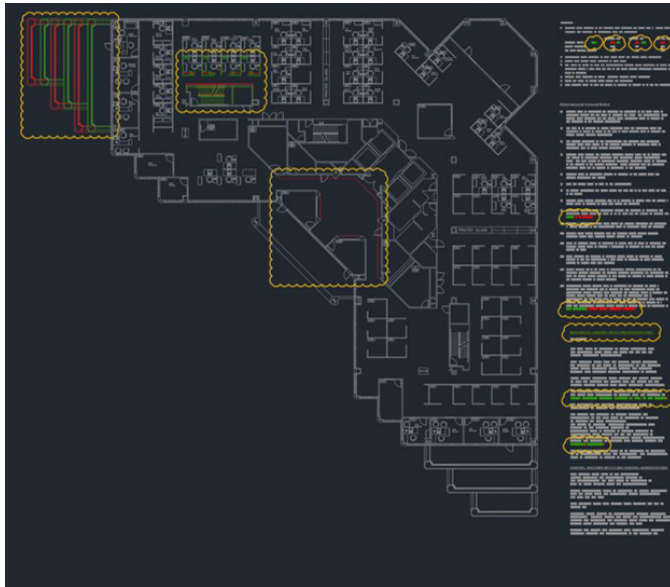


## Group

**Use the Group feature to perform multiple operations on the same objects without creating a block.**

With the Group feature, you can quickly create temporary object associations. When objects are grouped together, selecting one object in the group results in all objects being selected, but each object can still be modified individually unlike a standard block.

1. Select the Group command from the Groups Panel in the Home tab of the Ribbon, or type GROUP into the command line
2. Select the objects that you want to associate together, and press Enter.
3. Then, when you select any object in the group, all the grouped objects are selected. A grip is displayed at the center of the group bounding box to provide access to all grip operations.
4. Add a name or description to the group for easy access later.



## Drawing Compare and Drawing History

**Identify graphical differences between two revisions of any drawing with DWG Compare. Quickly view changes, see clashes, review constructability, and more.**

There's no need to worry about missing something – turning revision clouds on will further highlight the changes, and you can systematically cycle through each one to make sure every detail is accounted for. Start a DWG Comparison in the Collaborate Tab on the Ribbon or just type COMPARE into the command line.

You can also save your drawings to one of our cloud drive providers to access older versions of your drawing through the Drawing History palette.

If you access a file saved in OneDrive, Dropbox, or Box, then you can easily compare a drawing with previous versions of that drawing. This is especially helpful if you have multiple people working on the same drawing.

Drawing files saved to these cloud storage providers maintain previous versions of DWG files that can now be accessed in the new Drawing History palette. In the Drawing History palette, you can choose which version to compare your current drawing with filtering by date, user, or minimum time between versions.

The Compare button automatically opens the DWG Compare feature and the differences are displayed right in the current drawing. You can also import changes from your previous version into the current drawing in real time.

# Annotation





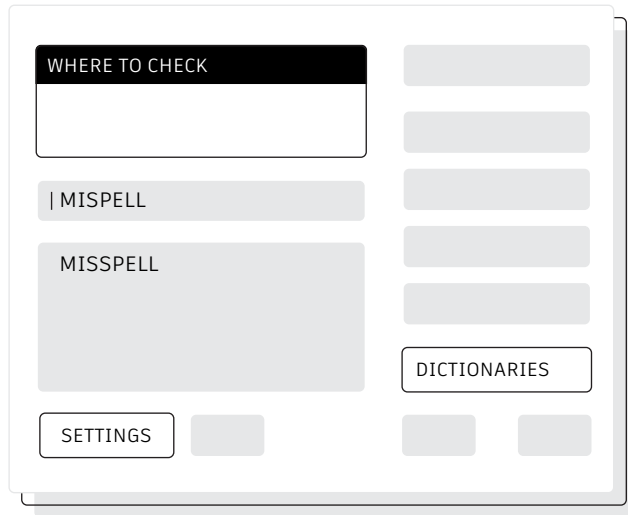
## Multiline text

**Use multiline text (MTEXT) instead of single line text (TEXT) whenever possible to give you flexibility in editing your text.**

You can create several paragraphs of text as a single multiline text (MTEXT) object. With the built-in editor, you can format the text appearance, columns, and boundaries.

In the Ribbon, select Annotate > Multiline Text (instead of Single Line Text) or use the MTEXT command.

## CHECK SPELLING



## Spell checker

**Avoid embarrassing spelling errors with the spell checker (SPELL) command. There are additional options to check everything, just the current space/layout, or only selected objects.**

You can find the SPELL command from the Text panel of the Annotate tab of the Ribbon (or type it in the Command Line). You'll get the Check Spelling dialog box. Click on the Settings button and you'll get further control over what's included in the check.

**BONUS:** One of the most powerful features here is the ability to create and update a custom dictionary. This is extremely valuable for industry-specific terms that may not be found in the standard dictionary.

## FIND AND REPLACE

FIND AND REPLACE

FIND WHAT

MISPELL

REPLACE WITH

MISSPELL

FIND WHERE

LOCATION OPTIONS

ACTIONS

SEARCH OPTIONS

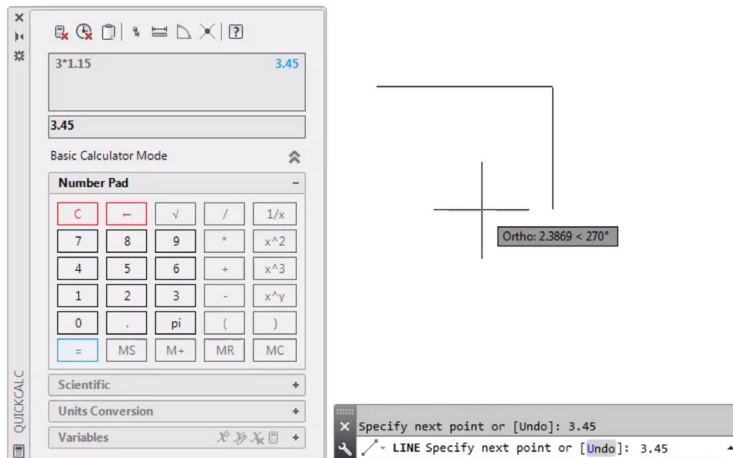
TEXT TYPES

## Find and Replace

**Need to fix misspellings or rename certain items? Much like in your favorite word processor, you can Find and Replace words with ease in AutoCAD LT.**

Start with the find text field in the Ribbon or type FIND into the Command Line. Like the spell checker, you can choose where you want to run the check. Also, there is a dialog expansion icon that will reveal additional search options and more controls on what kind of text objects are included.

**BONUS:** Add even more power to word search by employing wildcards. Characters such as \* @ ? ~ can represent one or more characters in a text string, empowering you to get more done in less time.



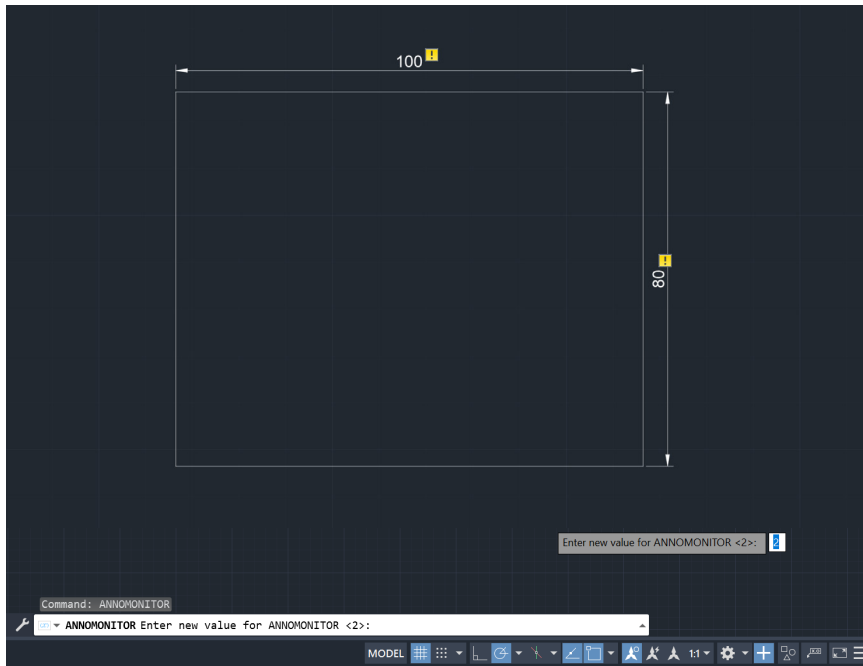
## QuickCalc

**Want to perform calculations right from within your drawing? The QuickCalc Calculator can be used to perform calculations within the AutoCAD LT drawing environment, and the value that's calculated can be sent directly to the current prompt for the command in progress.**

In AutoCAD LT, geometric values such as distance or angular measurement are often required to draw an object. In most situations, you might know the distance or angle required to draw an object but there are times when those values are unknown and need to be calculated.

Enter QC in the Command line or click on the QuickCalc tool in the Utilities panel of the Home tab.

**BONUS:** Use QuickCalc during another command by right-clicking to display the shortcut menu and choosing QuickCalc. The calculator will appear without disrupting your command in progress!



## Annotation Monitor

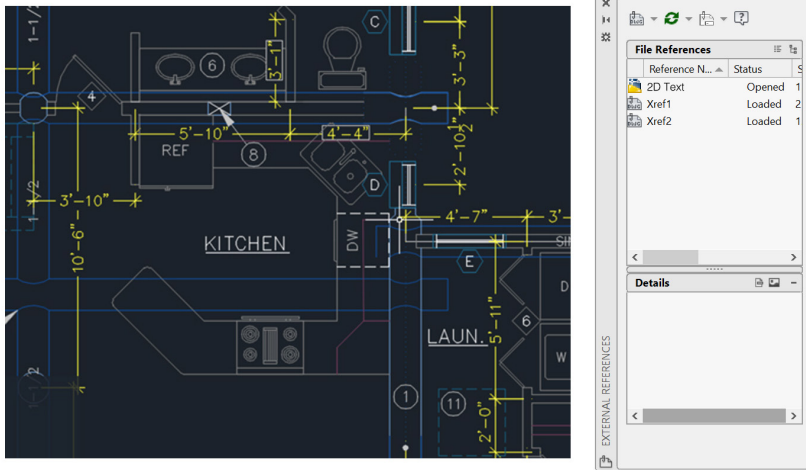
**Make sure your Associative Dimensions are still part of their related geometry by using Annotation Monitor.**

Have AutoCAD LT let you know when any of your dimensions have become disassociated with their geometry.

When you toggle the feature on from the Status Bar, AutoCAD LT will display a small, yellow, exclamation point badge which is your indication that your dimension is no longer associated with its objects. Click on the badge to reveal a small pop-up menu giving you the option to either delete the dimension or re-associate it to its object.



**Data  
management**



## External References

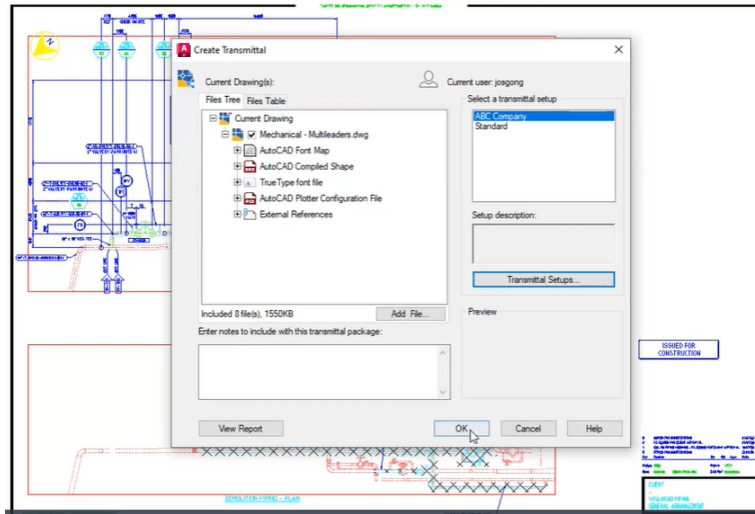
**Insert any drawing file as an external reference (Xref), and changes made in the referenced drawing are reflected automatically in the current drawing when opened or reloaded.**

Open the External References palette by using the XREF command and select the DWG icon to attach files. Attached Xrefs are linked to, but not actually inserted in, another drawing – which avoids increasing the file size.

When you attach an Xref, the default path type is set to Relative to avoid broken Xrefs in the future. If you have relative references in the current drawing and save it to a different location, AutoCAD LT will prompt you to update the relative paths.

**BONUS #1:** To find an external reference in a complex drawing, select an item in the External References palette to highlight all visible instances in the drawing. Conversely, select an external reference in the drawing to highlight its name in the External References palette.

**BONUS #2:** Easily edit an Xref by selecting it, then Right-click and select either Open Xref or Edit Xref in-Place.



## eTransmit

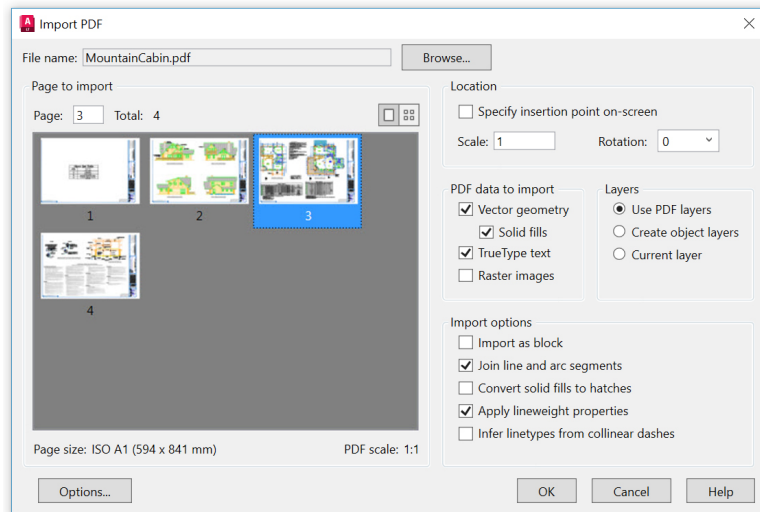
**When sharing DWG files containing Xrefs with others, package and deliver groups of drawings and related files using eTransmit. This prevents broken links and other errors when someone else opens your files.**

Xref links will be broken when you share the file with someone else, since they do not have your referenced files.

To create a transmittal package in a folder, click Application Menu > Publish > eTransmit or use the ETRANSMIT command. The Create Transmittal dialog box is displayed with options.

When you select a set of drawing files in a transmittal package, it automatically includes all related dependent files such as Xrefs and font files.



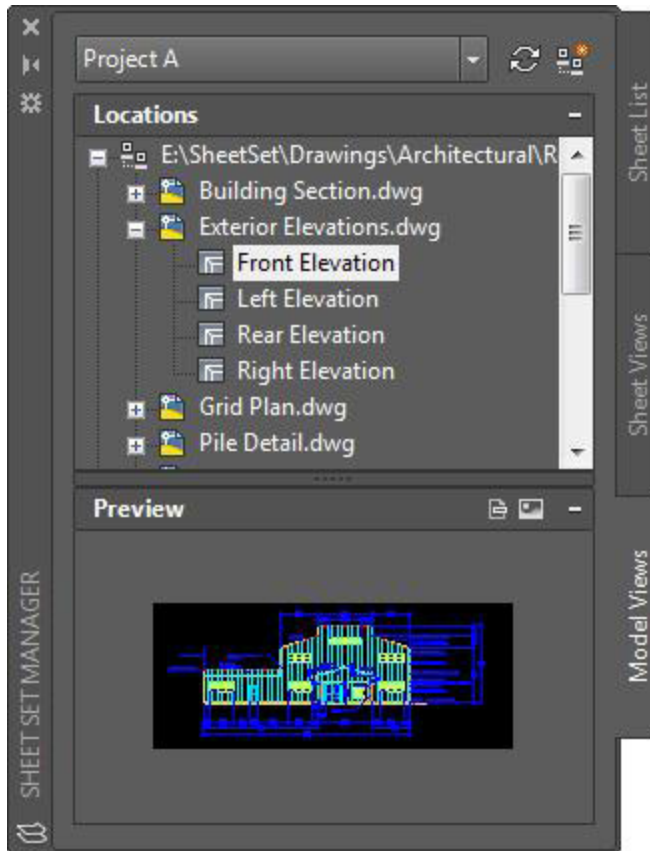


## PDF import

**Import geometry, fills, raster images, and TrueType text from a PDF file into your current drawing using PDF Import.**

PDF files are the most common file format used when exchanging design information between designers, contractors, clients, and others. Use the PDFIMPORT command to import geometry from a PDF page into the current drawing as AutoCAD objects. You can also access PDF Import in the Insert tab of the Ribbon, then click on Import Panel > PDF Import. After selecting a PDF file, use the Import PDF dialog box to customize your import.

**BONUS:** If your PDF contains AutoCAD .shx fonts, use the Recognize SHX Text tool to convert them into single line Mtext objects. You can find it in the Import panel of the Insert tab.



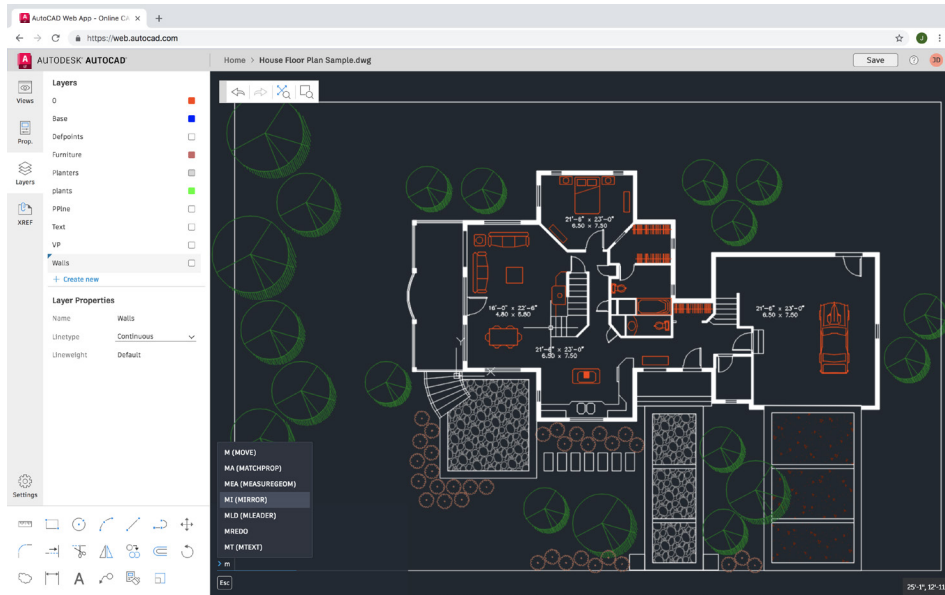
## Sheet set manager

**Keep your team on track by using the power of AutoCAD LT's Sheet Set Manager. Organize and maintain your drawing layouts, file paths, and project data from one place, accessible by your entire team.**

Sheet Set Manager not only functions as a file management system for your layout sheets, but it also manages saved views in both layouts and Model Space. You can easily publish part or all of the entire set, along with defining and updating title block and callout information using Fields. Getting started is easy with the Sheet Set Wizard found in the New section of the Application Menu.

**BONUS:** CAD Managers and others can significantly cut down the time it takes for post-project file delivery by using eTransmit directly from the Sheet Set Manager.

# Ecosystem

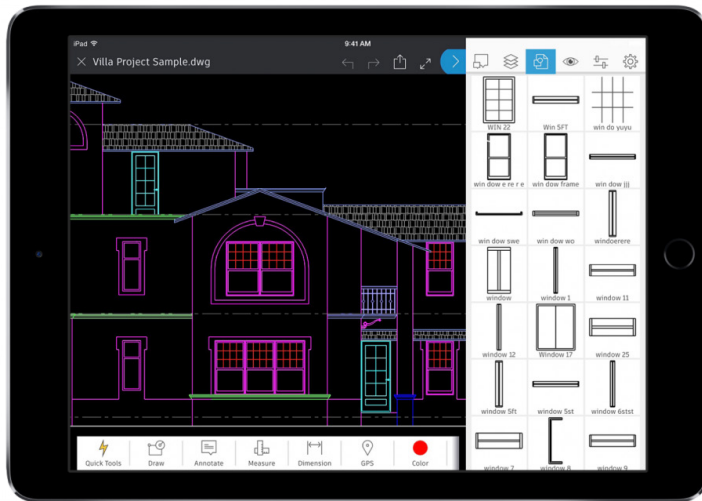


## AutoCAD on the web

When you don't have access to your office workstation, AutoCAD on the web can save you in a pinch. Just go to [web.autocad.com](https://web.autocad.com) using Google Chrome browser – there's nothing to download or install.

Log into AutoCAD on the web with your Autodesk ID (the same ID as your AutoCAD LT subscription ID). To easily save a drawing from your desktop up to AutoCAD on the web or mobile, you can select "Save to Web & Mobile" from the AutoCAD LT desktop App Menu's Save As command. Conversely, selecting "Open From Web & Mobile" in the menu's Open option lets you access the latest drawings created or edited created or edited in AutoCAD on the web or mobile..

**BONUS:** Take advantage of a familiar AutoCAD LT desktop feature – the Command Line!



## AutoCAD on your mobile device

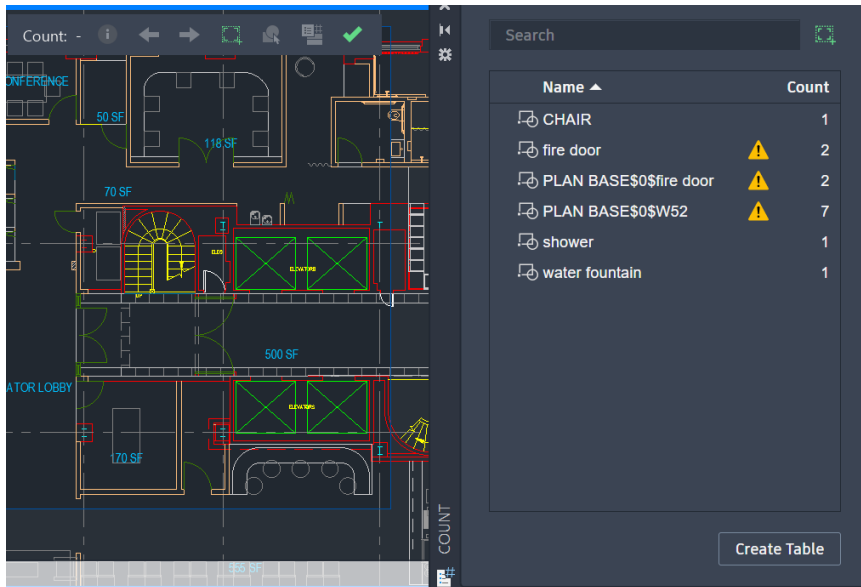
**Make edits on the go and wow your clients without carrying heavy blueprints in the field. Next time you're in the field and need to access the latest drawings immediately, just reach for your mobile device to view, edit, create, and share DWGs.**

Simply download AutoCAD to your mobile device via your device's app store. Log into the app with your Autodesk ID (the same ID as your AutoCAD LT subscription ID). Access drawings from a free Autodesk cloud storage account or other cloud accounts, including Google Drive, Dropbox, and OneDrive.

**BONUS:** AutoCAD on the web or mobile can connect directly with a Leica DISTO device. Create a line in your drawing, take a measurement with a DISTO, and the length will update automatically.



**Automation  
and  
Collaboration**



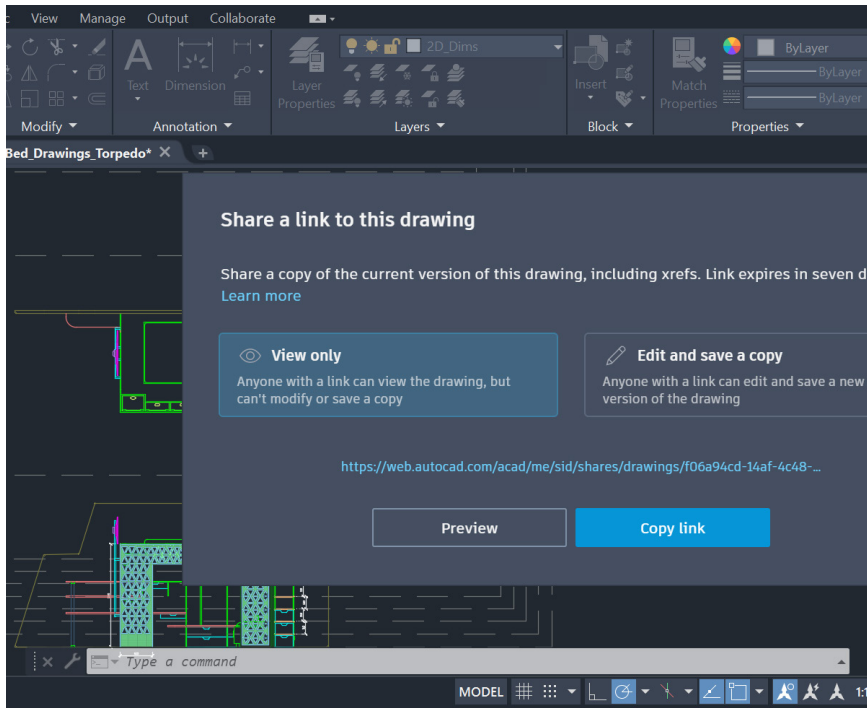
## Count

**Save time and reduce errors to avoid miscounting parts or ordering incorrect quantities with the Count feature.**

Automating the counting of blocks or geometry saves time and reduces errors. Now you can avoid miscounting parts or ordering incorrect quantities.

Count offers visual count results and more control over the count criteria. It's easy to specify a single block or object in the model space to count its instances. And you can also use the Count palette to display and manage the counted blocks in the current drawing.

Counts can be made over the entire drawing, or specified areas, and can be exported to dynamic tables that are easily updated.



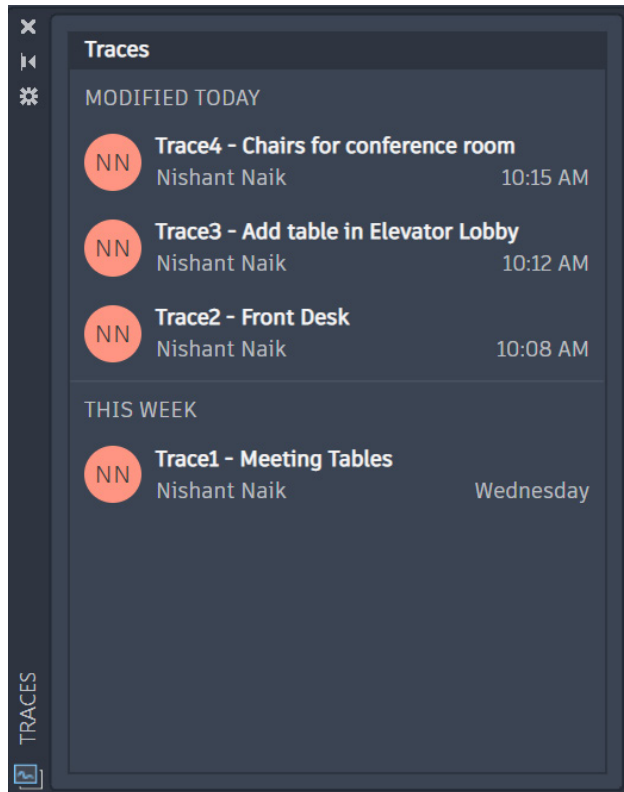
## Sharing Your Drawing Files

**Collaborate securely on your designs with either Share Views or Share (Drawing) - without releasing your original DWG files.**

Avoid the cumbersome, yet commonly used workflow of publishing and emailing designs via DWF or PDF files. With Shared Views, a file is created in AutoCAD LT and circulated via a shareable link that can be viewed and commented on in the browser of any device with internet access. Comments that collaborators make on the shared link appear right back in your AutoCAD LT desktop product.

Or you can share the entire drawing with the Share command. You'll create a link that can be opened in AutoCAD on the web and mobile by anyone you share it with. The shared file includes all related dependent files such as Xrefs and font files. You can choose between two permission levels for recipients: **View only** and **Edit and save a copy**.



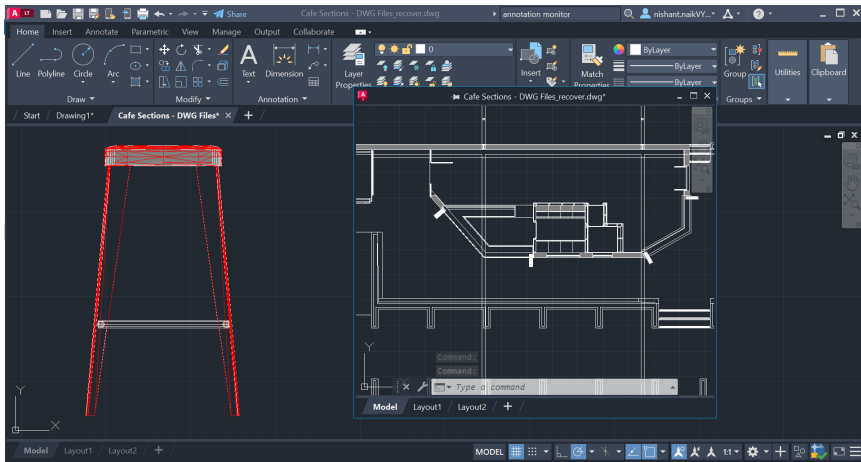


## Trace

**Collaborate on drawing changes from multiple contributors from AutoCAD LT on desktop as well as from AutoCAD on the web or mobile by utilizing the Trace command.**

Securely collaborate with your team and outside stakeholders by adding the powerful Trace feature to your workflow.

You'll no longer have to worry that your drawing will be altered, plus you'll have the power to create, add or contribute to your Traces. Think of a Trace as a virtual piece of tracing paper that is overlaid onto your drawing, allowing collaborators to add feedback right in the drawing. Users can view or edit existing Traces or contribute their own.



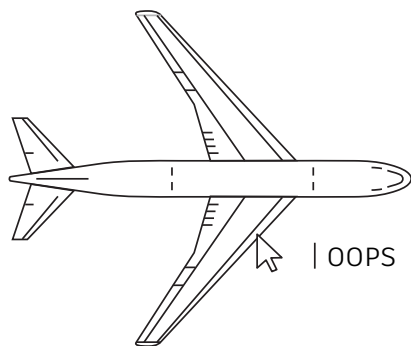
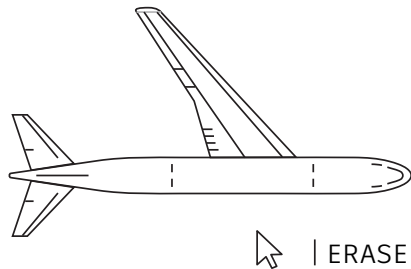
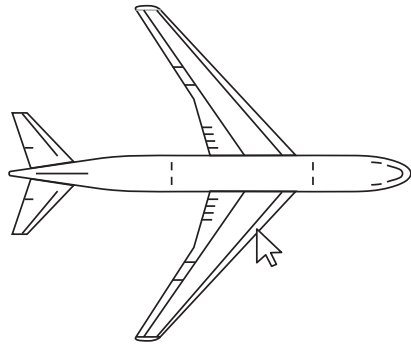
## Floating Windows

**Increase your efficiency and save valuable system resources by utilizing Floating Windows.**

Are you one of the many users who need to refer to another drawing while working on your own? Perhaps you've opened a second session (or more) of AutoCAD LT to display your reference file on a second monitor? Maybe you just switch file tabs in your single session.

Instead, you can drag the file tab away from the AutoCAD LT application window, turning it into a Floating Window. The Floating Window even has its own Command Line to help increase your productivity.

**Mindset**

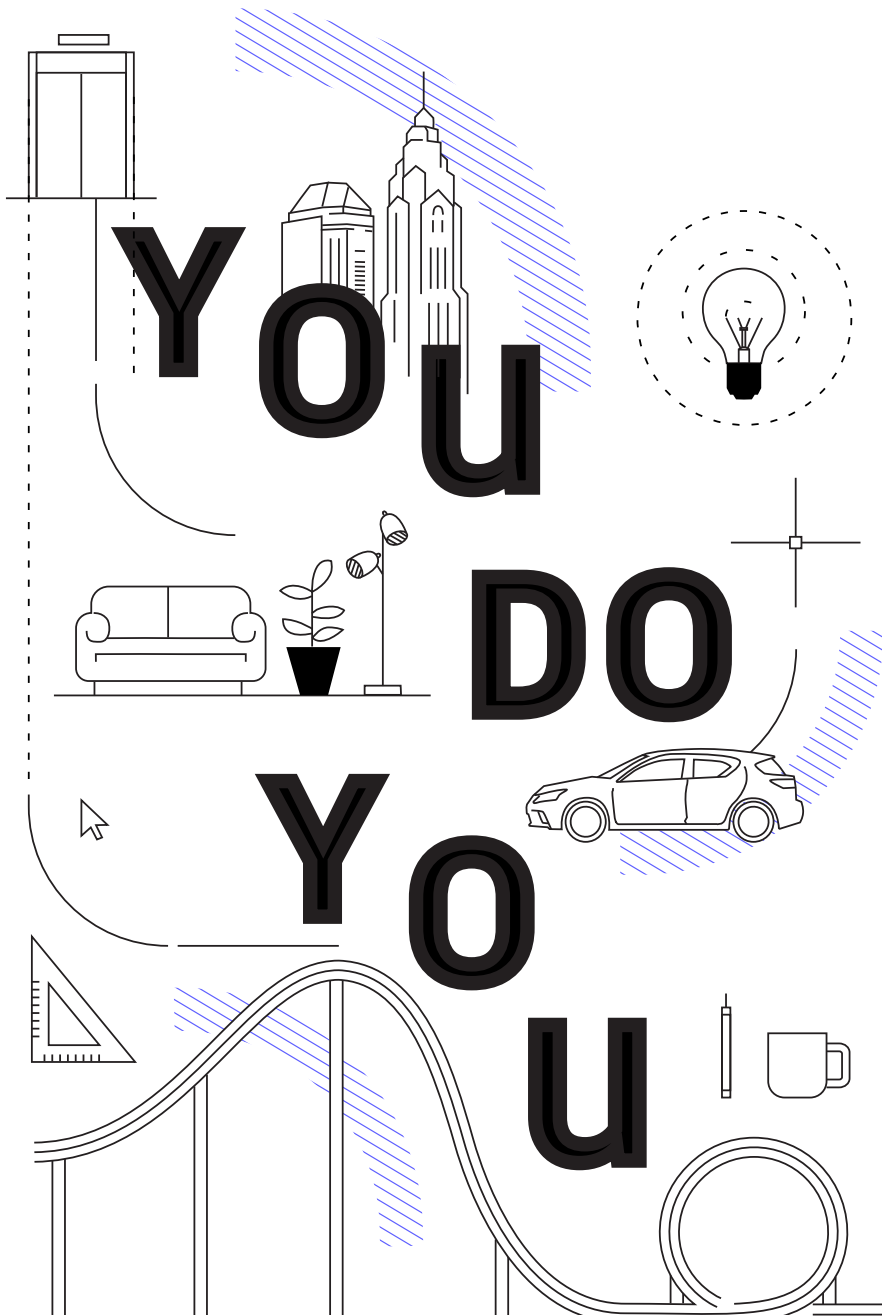


## Make mistakes

**Don't be afraid to explore AutoCAD LT and make mistakes. The more mistakes you make, the better you will become at using the software.**

To aid with experimentation, AutoCAD LT offers many options to correct errors:

- UNDO (or U) reverses the effect of commands. If you specify the number of preceding operations to Undo, you can avoid entering the command multiple times.
- ERASE removes selected objects from a drawing.
- OOPS restores objects erased by the last ERASE command.
- PURGE removes unused items, such as block definitions and layers, from the drawing.
- OVERKILL Removes duplicate or overlapping lines, arcs, and polylines – and combines partially overlapping or contiguous ones.



## You do you

**There's no right or wrong way to use AutoCAD LT. There are likely ten or more ways to accomplish any task. While some are more efficient than others, use what is easiest for you.**

We're here to help. Check out:

### **AutoCAD LT Website**

<https://www.autodesk.com/products/autocad-lt/overview>

### **Autodesk Knowledge Network**

[knowledge.autodesk.com](https://knowledge.autodesk.com)

### **AutoCAD Blog**

[blogs.autodesk.com/AutoCAD](https://blogs.autodesk.com/AutoCAD)

**This book is made possible by a number of AutoCAD users including the AutoCAD Facebook community, Frank Mayfield, Donnie Gladfelter, and many others.**

*Some features mentioned in this book, including DWG Compare and Save to Web and Mobile, are available starting in AutoCAD LT 2022.*

*Autodesk makes software and services available on a licensed or subscription basis. Rights to install, access, or otherwise use Autodesk software and services (including free software or services) are limited to license rights and services entitlements expressly granted by Autodesk in the applicable license or service agreement and are subject to acceptance of and compliance with all terms and conditions of that agreement. When you subscribe to a plan, it may renew automatically for a fixed fee on a monthly or annual basis, subject to availability. All benefits and purchase options may not be available for all software or services in all languages and/or geographies. Access to cloud services requires an Internet connection and is subject to any geographical restrictions set forth in the Terms of Service.*

*Autodesk, AutoCAD LT, and the Autodesk logo are registered trademarks or trademarks of Autodesk, Inc., and/or its subsidiaries and/or affiliates in the USA and/or other countries. All other brand names, product names, or trademarks belong to their respective holders. Autodesk reserves the right to alter product and services offerings, and specifications and pricing at any time without notice, and is not responsible for typographical or graphical errors that may appear in this document. © 2022 Autodesk, Inc. All rights reserved.*



