

# Premium Coaching Catalog

Please use the

Green Hyperlinks

Windows: Hold the Ctrl key + click  
Mac: Hold the Command key + click

Last Update: March 2024

# Coaching Catalog

PREMIUM COACHING

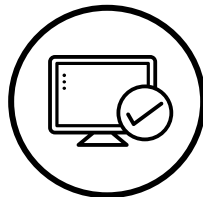
Please use hyperlinks in slide to navigate the catalog



I would like coaching to enhance end user software workflows and capabilities

**Product coaching**

*Example:  
Design Collaboration in AutoCAD*



I would like coaching to increase my effectiveness as a software administrator

**Administrator coaching**

*Example:  
Software Usage Reporting*



I would like coaching to help me manage and maintain the systems supporting my Autodesk software and services

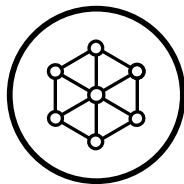
**Systems coaching**

*Example:  
Deployment Assistance*

# Product Coaching

PREMIUM COACHING

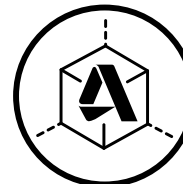
Please use hyperlinks in slide to navigate the catalog



I would like coaching to develop key capabilities that drive business outcomes

[Browse by Capability](#)

*Examples:  
Model Authoring or Design Review*



I would like coaching to develop my software usage skills

[Browse by Product](#)

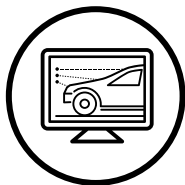
*Examples:  
Revit or Inventor*

# Product Coaching

PREMIUM COACHING

## Select an industry to view capabilities

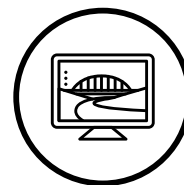
Please use hyperlinks in slide to navigate the catalog



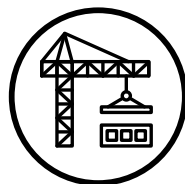
Auto &  
Transportation



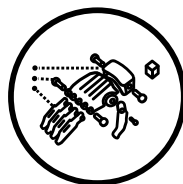
Buildings



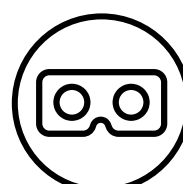
Civil  
Infrastructure



Construction  
Services



Manufacturing



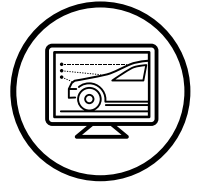
Media &  
Entertainment

# Auto & Transportation Capabilities

PREMIUM COACHING

## Select a capability

- [Automotive Conceptual Modelling](#)
- [Design Collaboration](#)
- [Design Review](#)
- [Reverse Engineering](#)
- [Surface Modelling](#)



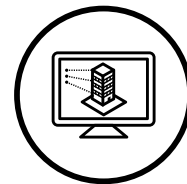
Please use hyperlinks in slide to navigate the catalog

# Buildings Capabilities

PREMIUM COACHING

## Select a capability

- [Architectural Detailing](#)
- [Architectural Model Authoring](#)
- [Building Conceptual Modelling](#)
- [CFD Analysis](#)
- [Design Automation](#)
- [Design Review](#)
- [Digital Drafting](#)
- [Document Management](#)
- [Information Management](#)
- [Model Co-Authoring for Buildings](#)
- [Reality Capture](#)
- [Structural Model Authoring](#)



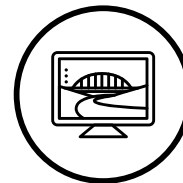
Please use hyperlinks in slide to navigate the catalog

# Civil Infrastructure Capabilities

PREMIUM COACHING

## Select a capability

- [Design Automation](#)
- [Design Visualization](#)
- [Existing Conditions Modelling](#)
- [Infrastructure Conceptual Modelling](#)
- [Mobility Simulation](#)
- [Model Co-Authoring for Linear Infrastructure](#)
- [Model Co-Authoring for Plant](#)
- [P&ID Authoring](#)
- [Plant Model Authoring](#)
- [Site Model Authoring](#)
- [Temporary Works Design](#)
- [Utilities Model Authoring](#)



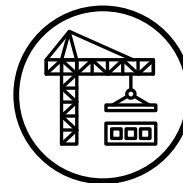
Please use hyperlinks in slide to navigate the catalog

# Construction Services Capabilities

PREMIUM COACHING

## Select a capability

- [Construction Master Scheduling and Simulation](#)
- [Coordination](#)
- [Design Management](#)
- [Document Management](#)
- [Estimating](#)
- [Quality Management](#)
- [Work Packaging](#)



Please use hyperlinks in slide to navigate the catalog

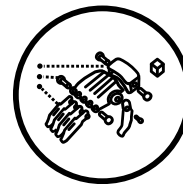


# Manufacturing Capabilities

PREMIUM COACHING

## Select a capability

- [Change Management](#)
- [Data Management](#)
- [Design Automation](#)
- [Design Collaboration](#)
- [Design for Manufacture](#)
- [Design Review](#)
- [Design Visualization](#)
- [Electrical Design](#)
- [Manufacturing Documentation](#)
- [Mechanical Design](#)
- [Model-Based Definition](#)
- [New Product Introduction](#)
- [Part Setup](#)
- [Product Simulation](#)
- [Technical Documentation](#)



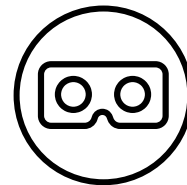
Please use hyperlinks in slide to navigate the catalog

# Media & Entertainment

PREMIUM COACHING

## Select a capability

- [Design Collaboration](#)
- [Design Review](#)
- [Pre-Production](#)
- [Project Management](#)
- [Shot Management](#)
- [Technical Asset Modelling](#)
- [Workload Management](#)



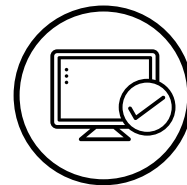
Please use hyperlinks in slide to navigate the catalog

# Administrator Coaching

PREMIUM COACHING

## Select a coaching topic

- [Flex Best Practices](#)
- [Implement Single Sign-On and Directory Sync](#)
- [Transition to Named User](#)
- [Usage Reporting Basics & Premium Reporting API](#)

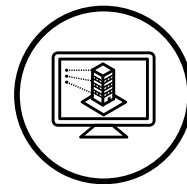


Please use hyperlinks in slide to navigate the catalog

# Architectural Detailing

PREMIUM COACHING

The ability to develop a technical drawing set that includes 2D details and 3D models to convey key connections of architectural model elements for construction



## BENEFITS

- Reduce Overall Design Time
- Increase Workload Capacity
- Exceed Performance Requirements

## AUDIENCE

- Architects

## PRODUCTS AVAILABLE FOR COACHING

*Please select a Product and Capability when requesting coaching*



**AUTODESK** AutoCAD



The topics and products eligible for coaching are subject to change at any time without notice.

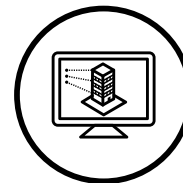
[Go to Coaching Request Form](#)

[Return to start](#)

# Architectural Model Authoring

PREMIUM COACHING

The ability to develop a Building Information Model (BIM model) based on criteria that is important to the translation of the building's design intent and constructability with a focus on the architectural toolsets.



## BENEFITS

- Reduce Overall Design Time
- Increase Workload Capacity
- Exceed Performance Requirements

## AUDIENCE

- Architects

## PRODUCTS AVAILABLE FOR COACHING

*Please select a Product and Capability when requesting coaching*



The topics and products eligible for coaching are subject to change at any time without notice.

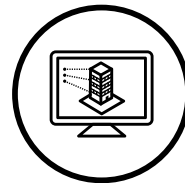
[Go to Coaching Request Form](#)

[Return to start](#)

# Building Conceptual Modelling

PREMIUM COACHING

The ability to create an abstract representation following the conceptualization of the design process, describing and communicating the thinking processes of the architect/designer to the client, design team, and any other key stakeholders on the design project.



## BENEFITS

- Improve Win Rate
- Improve Satisfaction
- Meet or Exceed Design Requirements

## AUDIENCE

- Architects

## PRODUCTS AVAILABLE FOR COACHING

*Please select a Product and Capability when requesting coaching*



**AUTODESK** FormIt Pro



The topics and products eligible for coaching are subject to change at any time without notice.

[Go to Coaching Request Form](#)

[Return to start](#)

# CFD Analysis

PREMIUM COACHING

The ability to carry out building, environmental and sustainability analysis regarding air flow and air flow impacts (flow simulation for computational fluid dynamics).



## BENEFITS

- Exceed Performance Requirements
- Reduce Environmental Impact
- Reduce Claims or Litigations

## AUDIENCE

- Architect
- Environmental Designer

## PRODUCTS AVAILABLE FOR COACHING

*Please select a Product and Capability when requesting coaching*



The topics and products eligible for coaching are subject to change at any time without notice.

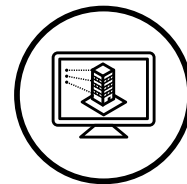
[Go to Coaching Request Form](#)

[Return to start](#)

# Design Automation

PREMIUM COACHING

The ability to use algorithms to automate design tasks, or undertake computational design studies to identify optimal design solutions.



## BENEFITS

- Reduce Overall Design Time
- Increase Workload Capacity
- Improve Design Quality

## AUDIENCE

- Architect
- BIM Manager
- Design Engineer

## PRODUCTS AVAILABLE FOR COACHING

*Please select a Product and Capability when requesting coaching*



The topics and products eligible for coaching are subject to change at any time without notice.

[Go to Coaching Request Form](#)

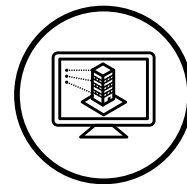
[Return to start](#)



# Design Review

PREMIUM COACHING

The ability to carry out regular reviews during the design process to ensure that the design reflects requirements and intent.



## BENEFITS

- Reduce Errors and Rework
- Improve Collaboration
- Improve Design Quality

## AUDIENCE

- Architect
- Structural Engineer
- BIM Manager

## PRODUCTS AVAILABLE FOR COACHING

*Please select a Product and Capability when requesting coaching*

**C** AUTODESK BIM Collaborate Pro

**R** AUTODESK Revit

**N** AUTODESK Navisworks

**AUTODESK Construction Cloud**

- Autodesk Docs
- BIM 360 Document Management (Docs)



The topics and products eligible for coaching are subject to change at any time without notice.

[Go to Coaching Request Form](#)

[Return to start](#)

# Digital Drafting

PREMIUM COACHING

Ability to replace the outdated and tedious process of manually producing technical drawings for architectural and engineering purposes with digital tools, often used for detailing and design for manufacturing and assembly



## BENEFITS

- Reduce Overall Design Time
- Increase Workload Capacity
- Reduce Overall Design Time

## AUDIENCE

- Architect
- Structural Engineer
- BIM Manager

## PRODUCTS AVAILABLE FOR COACHING

*Please select a Product and Capability when requesting coaching*

**A** **AUTODESK** AutoCAD

**A** **AUTODESK** AutoCAD Electrical

**A** **AUTODESK** AutoCAD Mechanical



The topics and products eligible for coaching are subject to change at any time without notice.

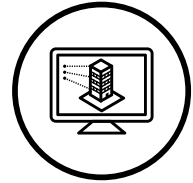
[Go to Coaching Request Form](#)

[Return to start](#)

# Document Management

PREMIUM COACHING

The ability to manage the practices for the creation, review, modification, issuance, distribution and accessibility of documents, including design, best practices, safety, alerts and announcements.



## BENEFITS

- Improve Collaboration
- Reduce Overall Design Time
- Manage Design and Project Complexity

## AUDIENCE

- Architect
- Structural Engineer
- BIM Manager

## PRODUCTS AVAILABLE FOR COACHING

*Please select a Product and Capability when requesting coaching*



**AUTODESK BIM Collaborate Pro**

### **AUTODESK Construction Cloud**

- Autodesk Docs
- BIM 360 Document Management (Docs)



The topics and products eligible for coaching are subject to change at any time without notice.

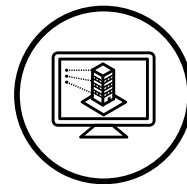
[Go to Coaching Request Form](#)

[Return to start](#)

# Information Management

PREMIUM COACHING

The ability to embed the "I" in BIM. Ensuring model data is added, managed and delivered in an effective and efficient manner.



## BENEFITS

- Improve Collaboration
- Increase Insights Through Data
- Improve Data Exchange

## AUDIENCE

- BIM Manager
- BIM Coordinator

## PRODUCTS AVAILABLE FOR COACHING

*Please select a Product and Capability when requesting coaching*



**AUTODESK** Revit



**AUTODESK** Civil 3D



The topics and products eligible for coaching are subject to change at any time without notice.

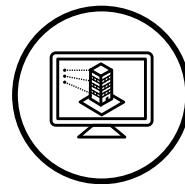
[Go to Coaching Request Form](#)

[Return to start](#)

# Model Co-Authoring for Buildings

PREMIUM COACHING

The ability of members of a design team to collaborate securely in real-time on design models, while working remotely from a wide variety of locations, with simplified workflows and centralized data.



## BENEFITS

- Manage Design and Project Complexity
- Improve Collaboration
- Reduce Errors and Rework

## AUDIENCE

- Architect
- BIM Manager
- Design Engineer

## PRODUCTS AVAILABLE FOR COACHING

*Please select a Product and Capability when requesting coaching*

**R** AUTODESK Revit

**C** AUTODESK BIM Collaborate Pro



The topics and products eligible for coaching are subject to change at any time without notice.

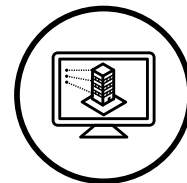
[Go to Coaching Request Form](#)

[Return to start](#)

# Structural Model Authoring

PREMIUM COACHING

The ability to develop a Building Information Model (BIM model) based on criteria that is important to the translation of the building's design intent and constructability with a focus on the structural toolsets.



## BENEFITS

- Exceed Performance Requirements
- Reduce Overall Design Time

## AUDIENCE

- Structural Engineer
- Design Engineer

## PRODUCTS AVAILABLE FOR COACHING

*Please select a Product and Capability when requesting coaching*



The topics and products eligible for coaching are subject to change at any time without notice.

[Go to Coaching Request Form](#)

[Return to start](#)

# Reality Capture

PREMIUM COACHING

The ability to create 3D models from photographs or laser scans captured digitally as point clouds with hardware such as a laser scanners or camera-mounted UAVs.



## BENEFITS

- Improve Design Quality
- Manage Design and Project Complexity
- Reduce Errors and Rework

## AUDIENCE

- Architect

## PRODUCTS AVAILABLE FOR COACHING

*Please select a Product and Capability when requesting coaching*



The topics and products eligible for coaching are subject to change at any time without notice.

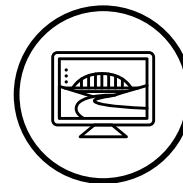
[Go to Coaching Request Form](#)

[Return to start](#)

# Design Automation

PREMIUM COACHING

The ability to customize AEC workflows in the cloud



## BENEFITS

- Increase Workload Capacity
- Reduce Overall Design Time
- Reduce Errors and Rework

## AUDIENCE

- Civil Engineer/ Designer
- Land/ Site Designer
- Rail Track Engineer

## PRODUCTS AVAILABLE FOR COACHING

*Please select a Product and Capability when requesting coaching*



The topics and products eligible for coaching are subject to change at any time without notice.

[Go to Coaching Request Form](#)

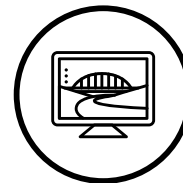
[Return to start](#)



# Design Visualization

PREMIUM COACHING

The ability to create 2d renderings, 3d visualizations and animations of a proposed Asset Design.



## BENEFITS

- Increase Stakeholder Buy-In
- Improve Win Rate
- Improve Design Quality

## AUDIENCE

- Design Engineer
- Visualization Specialist

## PRODUCTS AVAILABLE FOR COACHING

*Please select a Product and Capability when requesting coaching*

 **AUTODESK** InfraWorks

 **AUTODESK** Navisworks



The topics and products eligible for coaching are subject to change at any time without notice.

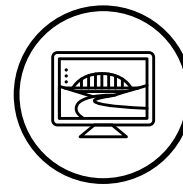
[Go to Coaching Request Form](#)

[Return to start](#)

# Existing Conditions Modelling

PREMIUM COACHING

The ability to produce an accurate representation of the existing site conditions, which could include both above and below ground features.



## BENEFITS

- Reduce Errors and Rework
- Reduce Overall Design Time
- Improve Win Rate

## AUDIENCE

- Civil Engineer/Designer
- Geotechnical Engineer
- Land Surveyor

## PRODUCTS AVAILABLE FOR COACHING

*Please select a Product and Capability when requesting coaching*

**A** AUTODESK AutoCAD Map 3D

**C** AUTODESK Civil 3D

**I** AUTODESK InfraWorks



The topics and products eligible for coaching are subject to change at any time without notice.

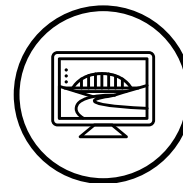
[Go to Coaching Request Form](#)

[Return to start](#)

# Infrastructure Conceptual Modelling

PREMIUM COACHING

The ability to describe and communicate the early stage thought processes of the designer to the client, design team, and any other key stakeholders on the design project.



## BENEFITS

- Improve Win Rate
- Reduce Environmental Impact

## AUDIENCE

- Civil Engineer/Designer
- Land/Site Designer
- Utilities Engineer/Designer

## PRODUCTS AVAILABLE FOR COACHING

*Please select a Product and Capability when requesting coaching*



The topics and products eligible for coaching are subject to change at any time without notice.

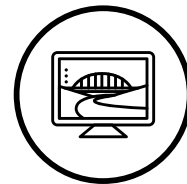
[Go to Coaching Request Form](#)

[Return to start](#)

# Mobility Simulation

PREMIUM COACHING

The ability to enable engineers, designers, and site planners to predictably evaluate both people and vehicle movements.



## BENEFITS

- Meet or Exceed Design Requirements
- Exceed Performance Requirements
- Improve Satisfaction

## AUDIENCE

- Land/Site Designer
- Civil Engineer/Designer
- Transport Planner

## PRODUCTS AVAILABLE FOR COACHING

*Please select a Product and Capability when requesting coaching*



The topics and products eligible for coaching are subject to change at any time without notice.

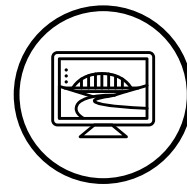
[Go to Coaching Request Form](#)

[Return to start](#)

# Model Co-Authoring for Linear Infrastructure

PREMIUM COACHING

The ability to enable members of a design team to collaborate securely on Transportation design models.



## BENEFITS

- Ensure Business Continuity
- Increase Workload Capacity
- Reduce Errors and Rework

## AUDIENCE

- Civil Engineer/Designer
- Land/Site Designer
- Rail Track Engineer

## PRODUCTS AVAILABLE FOR COACHING

*Please select a Product and Capability when requesting coaching*

 **AUTODESK** BIM Collaborate Pro

 **AUTODESK** Civil 3D



The topics and products eligible for coaching are subject to change at any time without notice.

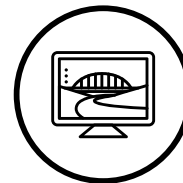
[Go to Coaching Request Form](#)

[Return to start](#)

# Model Co-Authoring for Plant

PREMIUM COACHING

The ability to enable members of a design team to collaborate securely in real-time on Plant design models.



## BENEFITS

- Ensure Business Continuity
- Improve Collaboration
- Reduce Errors and Rework

## AUDIENCE

- Energy Infrastructure Engineer
- Renewable Power Engineer
- Plant Engineer/ Designer

## PRODUCTS AVAILABLE FOR COACHING

*Please select a Product and Capability when requesting coaching*



**AUTODESK** AutoCAD Plant 3D



The topics and products eligible for coaching are subject to change at any time without notice.

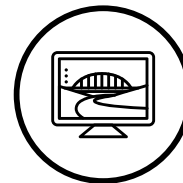
[Go to Coaching Request Form](#)

[Return to start](#)

# P&ID Authoring

PREMIUM COACHING

The ability to develop and deliver Piping and Instrumentation Diagrams.



## BENEFITS

- Meet or Exceed Design Requirements
- Reduce Overall Design Time

## AUDIENCE

- Energy Infrastructure Engineer
- Renewable Power Engineer
- Plant Engineer/ Designer

## PRODUCTS AVAILABLE FOR COACHING

*Please select a Product and Capability when requesting coaching*



**AUTODESK** AutoCAD Plant 3D



The topics and products eligible for coaching are subject to change at any time without notice.

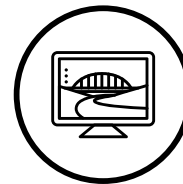
[Go to Coaching Request Form](#)

[Return to start](#)

# Plant Model Authoring

PREMIUM COACHING

The ability to develop and deliver a Building Information Model (BIM) of the Plant design.



## BENEFITS

- Meet or Exceed Design Requirements
- Reduce Overall Design Time
- Manage Design and Project Complexity

## AUDIENCE

- Energy Infrastructure Engineer
- Renewable Power Engineer
- Plant Engineer/ Designer

## PRODUCTS AVAILABLE FOR COACHING

*Please select a Product and Capability when requesting coaching*



**AUTODESK** AutoCAD Plant 3D



The topics and products eligible for coaching are subject to change at any time without notice.

[Go to Coaching Request Form](#)

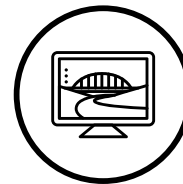
[Return to start](#)



# Site Model Authoring

PREMIUM COACHING

The ability to produce site designs, including grading, parking layouts, run-offs, storm drainage, road layouts etc.



## BENEFITS

- Reduce Overall Design Time
- Reduce Errors and Rework
- Manage Design and Project Complexity

## AUDIENCE

- Land/Site Designer
- Civil Engineer/Designer
- Transport Planner

## PRODUCTS AVAILABLE FOR COACHING

*Please select a Product and Capability when requesting coaching*



The topics and products eligible for coaching are subject to change at any time without notice.

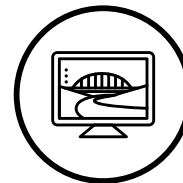
[Go to Coaching Request Form](#)

[Return to start](#)

# Temporary Works Design

PREMIUM COACHING

The ability to enable Engineers to design, detail and incorporate Temporary Works structures.



## BENEFITS

- Meet or Exceed Design Requirements
- Reduce Errors and Rework
- Manage Design and Project Complexity

## AUDIENCE

- Land/Site Designer
- Civil Engineer/Designer
- Transport Planner

## PRODUCTS AVAILABLE FOR COACHING

*Please select a Product and Capability when requesting coaching*



The topics and products eligible for coaching are subject to change at any time without notice.

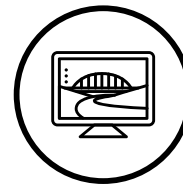
[Go to Coaching Request Form](#)

[Return to start](#)

# Utilities Model Authoring

PREMIUM COACHING

The ability to develop and deliver a Building Information Model (BIM) of the Utilities design.



## BENEFITS

- Improve Data Exchange
- Reduce Errors and Rework
- Reduce Overall Design Time

## AUDIENCE

- Utilities Engineer/Designer
- Plant Engineer/Designer
- Infrastructure Engineer

## PRODUCTS AVAILABLE FOR COACHING

*Please select a Product and Capability when requesting coaching*



The topics and products eligible for coaching are subject to change at any time without notice.

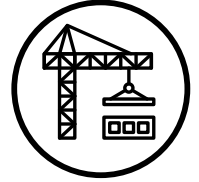
[Go to Coaching Request Form](#)

[Return to start](#)

# Construction Master Scheduling & Simulation

PREMIUM COACHING

The ability to provide detailed description and representation of how the contractor plans to construct the project's work scope. That work scope is represented by the schedule's work activities, how long they're going to take, and their sequence.



## BENEFITS

- Optimize Schedule Duration
- Reduce Onsite Worker Exposure
- Ensure Business Continuity

## AUDIENCE

- Project Manager
- Preconstruction Managers
- Estimators

## PRODUCTS AVAILABLE FOR COACHING

*Please select a Product and Capability when requesting coaching*



The topics and products eligible for coaching are subject to change at any time without notice.

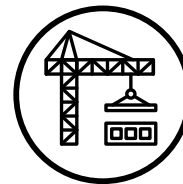
[Go to Coaching Request Form](#)

[Return to start](#)

# Coordination

PREMIUM COACHING

The ability to coordinate the design and trade input to ensure that the project can be executed as intended.



## BENEFITS

- Reduce Number of Constructability Issues
- Improve Collaboration
- Manage Design and Project Complexity

## AUDIENCE

- Project Manager
- BIM Manager
- Foreman

## PRODUCTS AVAILABLE FOR COACHING

*Please select a Product and Capability when requesting coaching*

**C** **AUTODESK** BIM Collaborate Pro

**N** **AUTODESK** Navisworks

**AUTODESK** Construction Cloud

- BIM 360 Model Coordination (Coordinate)

**AUTODESK**

The topics and products eligible for coaching are subject to change at any time without notice.

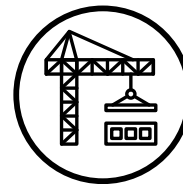
[Go to Coaching Request Form](#)

[Return to start](#)

# Design Management

PREMIUM COACHING

The ability to enable design teams to collaborate on the development of a single model.



## BENEFITS

- Reduce Construction Rework
- Reduce Number of Constructability Issues
- Increase Stakeholder Buy-In

## AUDIENCE

- Project Manager
- BIM Manager
- Foreman

## PRODUCTS AVAILABLE FOR COACHING

*Please select a Product and Capability when requesting coaching*

 **AUTODESK** BIM Collaborate Pro

 **AUTODESK** Construction Cloud

- BIM 360 Design

 **AUTODESK**

The topics and products eligible for coaching are subject to change at any time without notice.

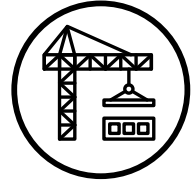
[Go to Coaching Request Form](#)

[Return to start](#)

# Document Management

PREMIUM COACHING

The ability to receive, organize and distribute construction plans, models and documents.



## BENEFITS

- Reduce Construction Rework
- Reduce Defects at Handover
- Reduce Number of Constructability Issues

## AUDIENCE

- Subcontractor Leaders
- Estimators
- Project Engineer
- Project Manager

## PRODUCTS AVAILABLE FOR COACHING

*Please select a Product and Capability when requesting coaching*

### **AUTODESK** Construction Cloud

- BIM 360 Document Management (Docs)



The topics and products eligible for coaching are subject to change at any time without notice.

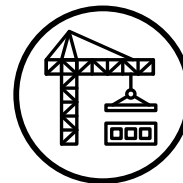
[Go to Coaching Request Form](#)

[Return to start](#)

# Estimating

PREMIUM COACHING

The ability to estimate the cost of projects, including managing vendor relationships that derive costs, general conditions, fees, contingency and other project specific variables.



## BENEFITS

- Increase Bid Efficiency
- Improve Win Rate
- Improve Forecast Accuracy

## AUDIENCE

- Subcontractor Leaders
- Estimators
- Project Manager

## PRODUCTS AVAILABLE FOR COACHING

*Please select a Product and Capability when requesting coaching*



The topics and products eligible for coaching are subject to change at any time without notice.

[Go to Coaching Request Form](#)

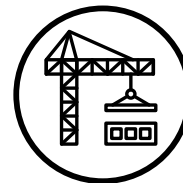
[Return to start](#)



# Quality Management

PREMIUM COACHING

The ability to ensure that quality standards are met on a project during construction.



## BENEFITS

- Reduce Defects at Handover
- Improve Customer Experience
- Reduce Non-Recoverable Cost

## AUDIENCE

- BIM Manager
- Site Execution Manager
- Project Manager

## PRODUCTS AVAILABLE FOR COACHING

*Please select a Product and Capability when requesting coaching*

### **AUTODESK** Construction Cloud

- BIM 360 Field (Classic)
- BIM 360 Field Management



The topics and products eligible for coaching are subject to change at any time without notice.

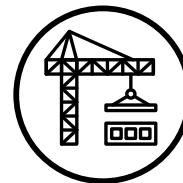
[Go to Coaching Request Form](#)

[Return to start](#)

# Work Packaging

PREMIUM COACHING

The ability to break down the design and construction information into packages that allows individual trades to undertake work based off a set of information that is tailor made to their needs.



## BENEFITS

- Improve Resource Planning
- Reduce Onsite Worker Exposure
- Improve Schedule Control

## AUDIENCE

- Site Execution Manager
- Project Manager

## PRODUCTS AVAILABLE FOR COACHING

*Please select a Product and Capability when requesting coaching*



The topics and products eligible for coaching are subject to change at any time without notice.

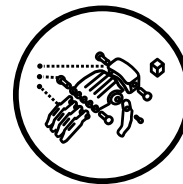
[Go to Coaching Request Form](#)

[Return to start](#)

# Change Management

PREMIUM COACHING

The ability to define, review, approve and manage changes required to a product or process.



## BENEFITS

- Improve Collaboration
- Improve Quality and Reliability
- Increase Product Development Agility

## AUDIENCE

- Design Engineer
- Project Engineer
- Project Manager

## PRODUCTS AVAILABLE FOR COACHING

*Please select a Product and Capability when requesting coaching*

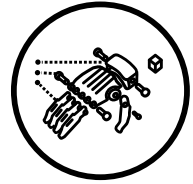


**AUTODESK** Vault Professional

# Data Management

PREMIUM COACHING

The ability to facilitate and use a secure, reliable Data rich platform for file and document management.



## BENEFITS

- Improve Collaboration
- Reduce Defects and Non-Conformities
- Increase Product Development Agility

## AUDIENCE

- Product Engineer
- CAD Manager
- Design Engineer

## PRODUCTS AVAILABLE FOR COACHING

*Please select a Product and Capability when requesting coaching*



**AUTODESK** Vault Professional



The topics and products eligible for coaching are subject to change at any time without notice.

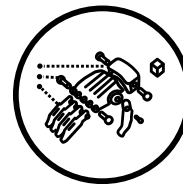
[Go to Coaching Request Form](#)

[Return to start](#)

# Design Automation

PREMIUM COACHING

The ability for software to execute the completion of design work adhering to specified design rules and parameters



## BENEFITS

- Reduce Non Value-Add Processes
- Increase Product Development Agility
- Improve Time to Market

## AUDIENCE

- Design Engineer
- Mechanical Engineer
- Product Engineer

## PRODUCTS AVAILABLE FOR COACHING

*Please select a Product and Capability when requesting coaching*



The topics and products eligible for coaching are subject to change at any time without notice.

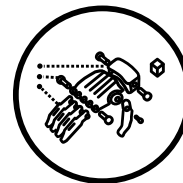
[Go to Coaching Request Form](#)

[Return to start](#)

# Design Collaboration

PREMIUM COACHING

The ability to collaborate with multiple departments, external stakeholders, and clients on a design with a file sharing system to improve efficiency around collaboration.



## BENEFITS

- Increase Product Development Agility
- Improve Collaboration
- Improve Time to Market

## AUDIENCE

- Product Designer
- Product Engineer
- Mechanical Engineer

## PRODUCTS AVAILABLE FOR COACHING

*Please select a Product and Capability when requesting coaching*



The topics and products eligible for coaching are subject to change at any time without notice.

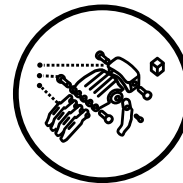
[Go to Coaching Request Form](#)

[Return to start](#)

# Design for Manufacture

PREMIUM COACHING

The ability to ensure a product design is actually feasible with the selected materials and available manufacturing technologies.



## BENEFITS

- Increase Manufacturing Throughput
- Reduce Defects and Non-Conformities
- Increase Product Development Agility

## AUDIENCE

- Manufacturing Engineer
- Product Designer
- Product Engineer

## PRODUCTS AVAILABLE FOR COACHING

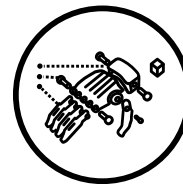
*Please select a Product and Capability when requesting coaching*

 **AUTODESK** Inventor Professional

# Design Review

PREMIUM COACHING

The ability to carry out regular reviews during the design process to ensure that the design reflects requirements and intent



## BENEFITS

- Improve Time to Market
- Optimize Factory Design

## AUDIENCE

- Mechanical Engineer
- Manufacturing Engineer

## PRODUCTS AVAILABLE FOR COACHING

*Please select a Product and Capability when requesting coaching*

**I** AUTODESK Inventor Professional

**A** AUTODESK AutoCAD

**V** AUTODESK Vault Professional



The topics and products eligible for coaching are subject to change at any time without notice.

[Go to Coaching Request Form](#)

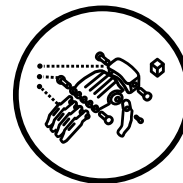
[Return to start](#)



# Design Visualization

PREMIUM COACHING

The ability to visualizations showing the attributes of a proposed design.



## BENEFITS

- Improve Satisfaction
- Improve Product Desirability
- Increase Stakeholder Buy-In

## AUDIENCE

- Mechanical Engineer
- Design Engineer
- Product Designer

## PRODUCTS AVAILABLE FOR COACHING

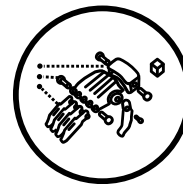
*Please select a Product and Capability when requesting coaching*

 **AUTODESK** Inventor Professional

# Electrical Design

PREMIUM COACHING

The ability to plan and design electrical circuits, equipment and systems, such as components, schematics, lighting, power, telecommunications etc.



## BENEFITS

- Improve Product Performance
- Expand Product Offerings

## AUDIENCE

- Electrical Engineer
- Mechanical Engineer
- Product Designer

## PRODUCTS AVAILABLE FOR COACHING

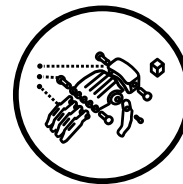
*Please select a Product and Capability when requesting coaching*

 **AUTODESK** AutoCAD Electrical

# Manufacturing Documentation

PREMIUM COACHING

The ability to produce and author manufacturing documents to support manufacturing functions to build products as specified by engineering.



## BENEFITS

- Reduce Defects and Non-Conformities
- Increase Manufacturing Flexibility

## AUDIENCE

- Manufacturing Engineer
- Mechanical Engineer
- Product Engineer

## PRODUCTS AVAILABLE FOR COACHING

*Please select a Product and Capability when requesting coaching*

**I** **AUTODESK** Inventor Professional

**A** **AUTODESK** AutoCAD

**V** **AUTODESK** Vault Professional



The topics and products eligible for coaching are subject to change at any time without notice.

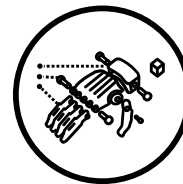
[Go to Coaching Request Form](#)

[Return to start](#)

# Mechanical Design

PREMIUM COACHING

The ability to design mechanical products using CAD applications.



## BENEFITS

- Increase Product Development Agility
- Improve Product Performance
- Improve Product Desirability

## AUDIENCE

- Mechanical Engineer
- Industrial Designer

## PRODUCTS AVAILABLE FOR COACHING

*Please select a Product and Capability when requesting coaching*

**I** **AUTODESK** Inventor Professional

**A** **AUTODESK** AutoCAD

**A** **AUTODESK** AutoCAD Mechanical



The topics and products eligible for coaching are subject to change at any time without notice.

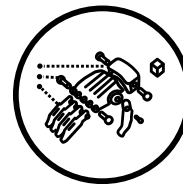
[Go to Coaching Request Form](#)

[Return to start](#)

# Model-based Definition

PREMIUM COACHING

The ability to make the CAD model the source authority to drive engineering activities and support downstream teams.



## BENEFITS

- Expand Product Offerings
- Improve Product Personalization

## AUDIENCE

- Mechanical Engineer
- Product Designer
- Product Engineer

## PRODUCTS AVAILABLE FOR COACHING

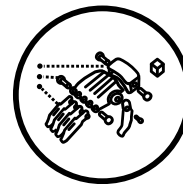
*Please select a Product and Capability when requesting coaching*

 **AUTODESK** Inventor Professional

# New Product Introduction

PREMIUM COACHING

The ability to launch new products into the market on time and to budget.



## BENEFITS

- Increase Product Development
- Expand and Diversify Services
- Expand Product Offerings

## AUDIENCE

- Product Engineer
- Product Manager
- Project Manager

## PRODUCTS AVAILABLE FOR COACHING

*Please select a Product and Capability when requesting coaching*



**AUTODESK** Vault Professional



The topics and products eligible for coaching are subject to change at any time without notice.

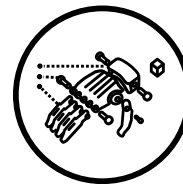
[Go to Coaching Request Form](#)

[Return to start](#)

# Part Setup

PREMIUM COACHING

The ability to identify and specify part position data within a CNC or automated manufacturing application.



## BENEFITS

- Increase Manufacturing Throughput
- Reduce Defects and Non-Conformities
- Reduce Non-Value-Add Processes

## AUDIENCE

- Machinist
- Manufacturing Engineer
- CAM Programmer

## PRODUCTS AVAILABLE FOR COACHING

*Please select a Product and Capability when requesting coaching*



The topics and products eligible for coaching are subject to change at any time without notice.

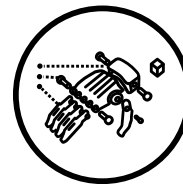
[Go to Coaching Request Form](#)

[Return to start](#)

# Product Simulation

PREMIUM COACHING

The ability to simulate the way a part/assembly/product will behave when manufactured and subjected to operating conditions.



## BENEFITS

- Improve Product Performance
- Improve Quality and Reliability
- Improve Product Development Agility

## AUDIENCE

- CAE Analyst
- Mechanical Engineer
- Product Designer

## PRODUCTS AVAILABLE FOR COACHING

*Please select a Product and Capability when requesting coaching*

**F** AUTODESK Fusion 360

**C** AUTODESK CFD



The topics and products eligible for coaching are subject to change at any time without notice.

[Go to Coaching Request Form](#)

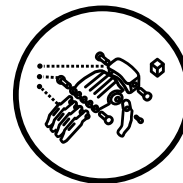
[Return to start](#)



# Technical Documentation

PREMIUM COACHING

The ability to author technical documents, models, specifications etc. related to the design, operation or maintenance of an organization's offering.



## BENEFITS

- Improve Quality and Reliability

## AUDIENCE

- Mechanical Engineer
- Product Engineer
- Product Manager

## PRODUCTS AVAILABLE FOR COACHING

*Please select a Product and Capability when requesting coaching*

**I** **AUTODESK** Inventor Professional

**A** **AUTODESK** AutoCAD



The topics and products eligible for coaching are subject to change at any time without notice.

[Go to Coaching Request Form](#)

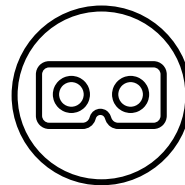
[Return to start](#)

# Design Collaboration

PREMIUM COACHING

The ability to collaborate on a design within the Design studio and with other functions.

---



## BENEFITS

- Improve Collaboration
  - Unlock Design Creativity
- 

## PRODUCTS AVAILABLE FOR COACHING

*Please select a Product and Capability when requesting coaching*

**F** **AUTODESK** Flow Production Tracking

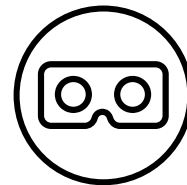
## SUPPORTED PRODUCT FEATURES

- Cross-Project Asset Linking

# Design Review

PREMIUM COACHING

The ability to carry out regular reviews during the design process to ensure that the design reflects requirements and intent.



## BENEFITS

- Reduce Time to Design Approval
- Improve Time to Market

## PRODUCTS AVAILABLE FOR COACHING

*Please select a Product and Capability when requesting coaching*

**F** **AUTODESK** Flow Production Tracking

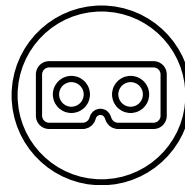
## SUPPORTED PRODUCT FEATURES

- Version and notes management
- Review Tools (Media page, Overlay Player)

# Pre-Production

PREMIUM COACHING

The ability to develop story, shot or scene, as well as script visualization, concept art, and story boards in a local or remote environment.



## BENEFITS

- Expand and Diversify Services
- Improve Collaboration
- Reduce Incidents of Scope Creep

## PRODUCTS AVAILABLE FOR COACHING

*Please select a Product and Capability when requesting coaching*

**F** **AUTODESK** Flow Production Tracking

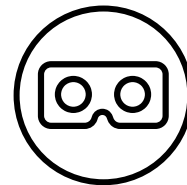
## SUPPORTED PRODUCT FEATURES

- Review Tools (Media page, Overlay Player)

# Project Management

PREMIUM COACHING

The ability to deliver projects to an organisation or client to scope, time, and budget



## BENEFITS

- Reduce Non Value-Add Processes
- Improve Collaboration
- Reduce Resource Consumption

## PRODUCTS AVAILABLE FOR COACHING

*Please select a Product and Capability when requesting coaching*

**F** **AUTODESK** Flow Production Tracking

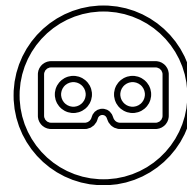
## SUPPORTED PRODUCT FEATURES

- Project Templates
- Task Scheduling
- Creating and administering pages
- Schema

# Shot Management

PREMIUM COACHING

The ability to manage and track all the components that goes into a commercial, feature film, or animated shot.



## BENEFITS

- Improve Resource Planning
- Improve Pipeline Flexibility and Scalability
- Increase Number of Creative Iterations

## PRODUCTS AVAILABLE FOR COACHING

*Please select a Product and Capability when requesting coaching*

**F** **AUTODESK** Flow Production Tracking

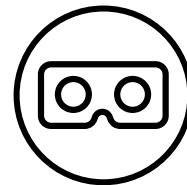
## SUPPORTED PRODUCT FEATURES

- Shot/Asset tracking
- Task Scheduling
- Custom Fields and Entities
- Task Templates
- Version and Notes management

# Technical Asset Modelling

PREMIUM COACHING

The ability to construct hard surface, organic or other assets. Can include kit bashing, scanning, using existing libraries, and legacy content creation and generation in a local or remote environment.



## BENEFITS

- Deliver Highest Quality Production Values
- Repurpose Assets to Reduce Digital Waste
- Increase Task and Process Automation

## PRODUCTS AVAILABLE FOR COACHING

*Please select a Product and Capability when requesting coaching*



The topics and products eligible for coaching are subject to change at any time without notice.

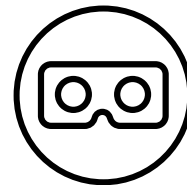
[Go to Coaching Request Form](#)

[Return to start](#)

# Workload Management

PREMIUM COACHING

The ability to enable Production to staff tasks for various assets and shots in a show or across a facility.



## BENEFITS

- Increase Workload Capacity
- Unlock Design Creativity

## PRODUCTS AVAILABLE FOR COACHING

*Please select a Product and Capability when requesting coaching*

**F** **AUTODESK** Flow Production Tracking

## SUPPORTED PRODUCT FEATURES

- Task Scheduling
- Crew Planning (Beta)
- Project Timeline (Beta)



The topics and products eligible for coaching are subject to change at any time without notice.

[Go to Coaching Request Form](#)

[Return to start](#)



# Automotive Conceptual Modelling

PREMIUM COACHING

The ability to rapidly iterate and develop design concepts and models to meet the design intent.



## BENEFITS

- Unlock Design Creativity
- Reduce Time to Design Approval
- Expand Product Offerings

## AUDIENCE

- Automotive Designer
- Exterior Designer
- Studio Engineer

## PRODUCTS AVAILABLE FOR COACHING

*Please select a Product and Capability when requesting coaching*

**A** AUTODESK Alias AutoStudio

**A** AUTODESK Alias Concept

**A** AUTODESK Alias Surface



The topics and products eligible for coaching are subject to change at any time without notice.

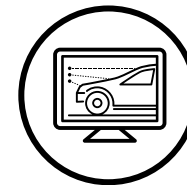
[Go to Coaching Request Form](#)

[Return to start](#)

# Reverse Engineering

PREMIUM COACHING

The ability to capture existing data in order to re-produce, iterate or redesign a part or product.



## BENEFITS

- Increase Product Development Agility
- Reduce Time to Design Approval
- Optimize Factory Design

## AUDIENCE

- Clay Modeller
- CAD Engineer

## PRODUCTS AVAILABLE FOR COACHING

*Please select a Product and Capability when requesting coaching*



The topics and products eligible for coaching are subject to change at any time without notice.

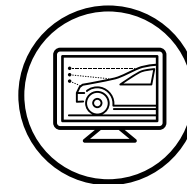
[Go to Coaching Request Form](#)

[Return to start](#)

# Surface Modelling

PREMIUM COACHING

The ability to refine concept models into high quality Class-A surfaces for automotive design and styling.



## BENEFITS

- Unlock Design Creativity
- Reduce Time to Design Approval
- Expand Product Offerings

## AUDIENCE

- Automotive Designer
- Exterior Designer
- Studio Engineer

## PRODUCTS AVAILABLE FOR COACHING

*Please select a Product and Capability when requesting coaching*

 **AUTODESK** Alias AutoStudio

 **AUTODESK** Alias Surface



The topics and products eligible for coaching are subject to change at any time without notice.

[Go to Coaching Request Form](#)

[Return to start](#)

# Usage Reporting Basics & Premium Reporting API

PREMIUM COACHING

Leverage features within the Autodesk Account to better understand the usage habits of your teams and understand how Premium Reporting APIs can further enhance this analysis.



## BENEFITS

- Improve Data Driven Decision Making
- Reduce Total Cost of Ownership
- Review Usage Data to Drive Optimization

## AUDIENCE

- Account Administrator
- Secondary Administrator
- Development Team

## PREMIUM API USE CASES

- Charge Product Cost Back to a Specific Project
- Identify Infrequent & Underused Software
- Identify Power Users
- Monitor Versions on Projects
- License Optimization
- Monitor Flex Token Usage
- Identify Flex Candidates



The topics and products eligible for coaching are subject to change at any time without notice.

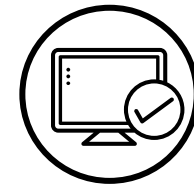
[Go to Coaching Request Form](#)

[Return to start](#)

# Implement Single Sign-On and Directory Sync

PREMIUM COACHING

Understand how implementing SSO & Directory Sync can streamline administration while providing enhanced security and a better user experience. Autodesk Experts provide a comprehensive overview of both features and guide you through the steps required for implementation.



## BENEFITS

- Improve cyber security with standardized security policies
- Reduce costs through automated User Lifecycle Management
- Simplified Onboarding

## AUDIENCE

- Primary Administrator
- SSO Administrator
- IT

## SINGLE SIGN-ON & DIRECTORY SYNC USE CASES

- Eliminate need to keep track of multiple passwords
- Boosts user productivity by reducing login time
- Better visibility and control of application access
- User management optimization
- Automated product assignment using AD-sync
- Improved software provisioning



The topics and products eligible for coaching are subject to change at any time without notice.

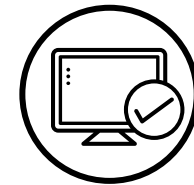
[Go to Coaching Request Form](#)

[Return to start](#)

# Transition to Named User

PREMIUM COACHING

Understand how by transitioning to Named User can unlock a far more relevant user experience – more efficient collaboration, constructive insights, and time-saving convenience. Autodesk Experts provide a comprehensive overview of the benefits and a step-by-step process for administrators transitioning from Network Users to Named User model.



## BENEFITS

- No need to manage license servers
- Dedicated access for all employees
- Optimize assignment with greater visibility into your usage data

## AUDIENCE

- Primary Administrator
- Secondary Administrator
- SSO Administrator

## TRANSITION TO NAMED USER USE CASES

- Streamline Administrative Work
- Identify Infrequent & Underused Software
- 1:1 Software Access to Avoid User Downtime
- No More Tracking Serial Numbers
- Increased Data Security



The topics and products eligible for coaching are subject to change at any time without notice.

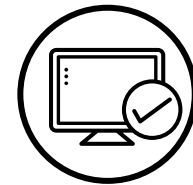
[Go to Coaching Request Form](#)

[Return to start](#)

# Flex Best Practices

PREMIUM COACHING

Autodesk Flex is a pay-as-you-go option that lets you pre-purchase tokens to access any product available with Flex for a daily rate. Flex is a great option for team members or individuals who want to try a product or only need occasional access. Autodesk Experts provide a thorough explanation of the licensing approach and walk you through specific use cases that enable you to extract the greatest value.



## BENEFITS

- Full access to ADSK portfolio of products
- Ease of software administration
- Provide access to occasional users and usage

## AUDIENCE

- Primary Administrator
- Secondary Administrator

## FLEX USE CASES

- Maximize value for occasional users and usage
- Encourages experimentation and growth in users' capabilities
- Consolidation of users/licenses to one account and assess usage requirements
- Lends itself to project-oriented work



The topics and products eligible for coaching are subject to change at any time without notice.

[Go to Coaching Request Form](#)

[Return to start](#)

# Systems Coaching

PREMIUM COACHING

## Select a coaching topic

- [Deployment Assistance](#)
- [IT Infrastructure readiness for BIM Collaborate Pro](#)



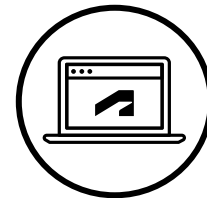
Please use hyperlinks in slide to navigate the catalog



# IT Infrastructure readiness for BIM Collaborate Pro

PREMIUM COACHING

Enhance administrators' understanding of system and network configuration for onboarding users to Autodesk BIM Collaborate Pro. Provide tailored support, guidance, and resources to optimize performance and security for a seamless user experience.



## BENEFITS

- Improved user onboarding experience through the correct setup of system ,network and security configurations
- Performance optimization for faster data uploads and downloads
- Improved security for onsite and remote users

## AUDIENCE

- Primary Administrator
- Secondary Administrator
- BIM Manager

## USE CASES

- Implementation of Autodesk AEC cloud-based design collaboration and design management workflows
- Necessity to secure and enhance upload and download speeds with BIM collaborate Pro products for onsite and remote users
- Optimization of BIM workflows with effective and complete use of BIM collaborate pro capabilities



The topics and products eligible for coaching are subject to change at any time without notice.

[Go to Coaching Request Form](#)

[Return to start](#)

# Deployment Assistance

PREMIUM COACHING

Empower Administrators through personalized support and expert assistance when installing and deploying Autodesk software. Tailored recommendations, training and resources provide confidence and optimize the deployment process ensuring a seamless end user experience.



## BENEFITS

- Expert assistance and personalized support
- Optimized software deployment process
- Enhanced end user experience
- Faster and safer Installation and deployment experience

## AUDIENCE

- Primary Administrator
- Secondary Administrator
- CAD administrator
- Product Packaging Team

## USE CASES

- New product implementation
- Product upgrades
- Product deployment optimization



The topics and products eligible for coaching are subject to change at any time without notice.

[Go to Coaching Request Form](#)

[Return to start](#)

# Coaching Catalog

PREMIUM COACHING

## Select a Product

[Please use hyperlinks in slide to navigate the catalog](#)

**A** AUTODESK Alias AutoStudio

**A** AUTODESK Alias Concept

**A** AUTODESK Alias Surface

**A** AUTODESK AutoCAD

**A** AUTODESK AutoCAD Electrical

**A** AUTODESK AutoCAD Map 3D

**A** AUTODESK AutoCAD Mechanical

**A** AUTODESK AutoCAD Plant 3D

**C** AUTODESK BIM Collaborate Pro

 AUTODESK Construction Cloud

**C** AUTODESK CFD

**C** AUTODESK Civil 3D

**F** AUTODESK FormIt Pro

**F** Flow Production Tracking

**F** AUTODESK Fusion 360

**I** AUTODESK InfraWorks

**I** AUTODESK Inventor Professional

**N** AUTODESK Navisworks

 AUTODESK Platform Services  
AUTODESK FORGE

**R** AUTODESK ReCap Pro

**R** AUTODESK Revit

**V** AUTODESK Vault Professional



The topics and products eligible for coaching are subject to change at any time without notice.

[Return to start](#)

# Alias AutoStudio

PREMIUM COACHING

## CAPABILITY AVAILABLE FOR COACHING

*Please select a Product and Capability when requesting coaching*

- Automotive Conceptual Modelling in Alias AutoStudio
- Surface Modelling in Alias AutoStudio



## AUTODESK Alias AutoStudio

### BENEFITS

- Unlock Design Creativity
- Reduce Time to Design Approval
- Expand Product Offerings

### AUDIENCE

- Automotive Designer
- Exterior Designer
- Studio Engineer

# Alias Concept

PREMIUM COACHING

## CAPABILITY AVAILABLE FOR COACHING

*Please select a Product and Capability when requesting coaching*

- Automotive Conceptual Modelling in Alias Concept

## **AUTODESK Alias Concept**

### **BENEFITS**

- Unlock Design Creativity
- Reduce Time to Design Approval
- Expand Product Offerings

### **AUDIENCE**

- Automotive Designer
- Exterior Designer
- Studio Engineer

# Alias Surface

PREMIUM COACHING

## CAPABILITY AVAILABLE FOR COACHING

*Please select a Product and Capability when requesting coaching*

- Automotive Conceptual Modelling in Alias Surface
- Surface Modelling in Alias Surface



### BENEFITS

- Unlock Design Creativity
- Reduce Time to Design Approval
- Expand Product Offerings

### AUDIENCE

- Automotive Designer
- Exterior Designer
- Studio Engineer

# AutoCAD

PREMIUM COACHING

## CAPABILITY AVAILABLE FOR COACHING

*Please select a Product and Capability when requesting coaching*

- [Architectural Detailing in AutoCAD](#)
- [Design Collaboration in AutoCAD](#)
- [Design Review in AutoCAD](#)
- [Digital Drafting in AutoCAD](#)
- [Manufacturing Documentation in AutoCAD](#)
- [Mechanical Design in AutoCAD](#)
- [Technical Documentation in AutoCAD](#)



### BENEFITS

- Increase Product Development Agility
- Improve Collaboration
- Improve Time to Market

### AUDIENCE

- Product Designer
- Product Engineer
- Mechanical Engineer
- Manufacturing Engineer

# AutoCAD Electrical

PREMIUM COACHING

## CAPABILITY AVAILABLE FOR COACHING

*Please select a Product and Capability when requesting coaching*

- [Digital Drafting in AutoCAD Electrical](#)
- [Electrical Design in AutoCAD Electrical](#)



**AUTODESK AutoCAD Electrical**

### BENEFITS

- Improve Product Performance
- Expand Product Offerings

### AUDIENCE

- Electrical Engineer
- Mechanical Engineer
- Product Designer



# AutoCAD Map 3D

PREMIUM COACHING

## CAPABILITY AVAILABLE FOR COACHING

*Please select a Product and Capability when requesting coaching*

- Existing Conditions Modelling in AutoCAD Map 3D



**AUTODESK AutoCAD Map 3D**

### BENEFITS

- Reduce Errors and Rework
- Reduce Overall Design Time
- Improve Win Rate

### AUDIENCE

- Civil Engineer/Designer
- Geotechnical Engineer
- Land Surveyor

# AutoCAD Mechanical

PREMIUM COACHING

## CAPABILITY AVAILABLE FOR COACHING

*Please select a Product and Capability when requesting coaching*

- [Digital Drafting in AutoCAD Mechanical](#)
- [Mechanical Design in AutoCAD Mechanical](#)



## BENEFITS

- Increase Product Development Agility
- Improve Product Performance
- Improve Product Desirability

## AUDIENCE

- Mechanical Engineer
- Industrial Designer

# AutoCAD Plant 3D

PREMIUM COACHING

## CAPABILITY AVAILABLE FOR COACHING

*Please select a Product and Capability when requesting coaching*

- Model Co-authoring for Plant in AutoCAD Plant 3D
- P&ID Authoring in AutoCAD Plant 3D
- Plant Model Authoring in AutoCAD Plant 3D



## AUTODESK AutoCAD Plant 3D

### BENEFITS

- Meet or Exceed Design Requirements
- Reduce Overall Design Time
- Manage Design and Project Complexity

### AUDIENCE

- Energy Infrastructure Engineer
- Renewable Power Engineer
- Plant Engineer/ Designer

# BIM Collaborate Pro

PREMIUM COACHING

## CAPABILITY AVAILABLE FOR COACHING

*Please select a Product and Capability when requesting coaching*

- [Coordination in Autodesk BIM Collaborate Pro](#)
- [Design Management in BIM Collaborate Pro](#)
- [Design Review in Autodesk BIM Collaborate Pro](#)
- [Document Management in Autodesk BIM Collaborate Pro](#)
- [Model Co-authoring for Buildings in Autodesk BIM Collaborate Pro](#)
- [Model Co-authoring for Linear Infrastructure in Autodesk BIM Collaborate Pro](#)
  
- [Systems Coaching: IT Infrastructure readiness for BIM Collaborate Pro](#)



**AUTODESK BIM Collaborate Pro**

### BENEFITS

- Reduce Number of Constructability Issues
- Improve Collaboration
- Manage Design and Project Complexity

### AUDIENCE

- Architect
- Structural Engineer
- BIM Manager



The topics and products eligible for coaching are subject to change at any time without notice.

[Go to Coaching Request Form](#)

[Return to start](#)

# Autodesk Construction Cloud

PREMIUM COACHING

## CAPABILITY AVAILABLE FOR COACHING

*Please select a Product and Capability when requesting coaching*

- Design Review in Autodesk Docs
- Document Management in Autodesk Docs
- Design Management in BIM 360 Design
- Design Review in BIM 360 Document Management
- Document Management in BIM 360 Document Management
- Quality Management in BIM 360 Field Management
- Coordination in BIM 360 Model Coordination

## AUTODESK Construction Cloud

### BENEFITS

- Improve Collaboration
- Reduce Overall Design Time
- Reduce Errors and Rework

### AUDIENCE

- Architect
- Structural Engineer
- BIM Manager



The topics and products eligible for coaching are subject to change at any time without notice.

[Go to Coaching Request Form](#)

[Return to start](#)

# CFD

PREMIUM COACHING

## CAPABILITY AVAILABLE FOR COACHING

*Please select a Product and Capability when requesting coaching*

- CFD Analysis in CFD
- Product Simulation in CFD



### BENEFITS

- Exceed Performance Requirements
- Improve Product Performance
- Improve Quality and Reliability

### AUDIENCE

- CAE Analyst
- Mechanical Engineer
- Product Designer

# Civil 3D

PREMIUM COACHING

## CAPABILITY AVAILABLE FOR COACHING

*Please select a Product and Capability when requesting coaching*

- Existing Conditions Modelling in Civil 3D
- Information Management in Civil 3D
- Model Co-authoring for Linear Infrastructure in Civil 3D
- Site Model Authoring in Civil 3D
- Utilities Model Authoring in Civil 3D



## BENEFITS

- Reduce Errors and Rework
- Reduce Overall Design Time
- Manage Design and Project Complexity

## AUDIENCE

- Civil Engineer/Designer
- Land/Site Designer
- Rail Track Engineer
- Land Surveyor

# FormIt Pro

PREMIUM COACHING

## CAPABILITY AVAILABLE FOR COACHING

*Please select a Product and Capability when requesting coaching*

- Building Conceptual Modelling in FormIt



### BENEFITS

- Improve Win Rate
- Improve Satisfaction
- Meet or Exceed Design Requirements

### AUDIENCE

- Architects



The topics and products eligible for coaching are subject to change at any time without notice.

[Go to Coaching Request Form](#)

[Return to start](#)



# Fusion 360

PREMIUM COACHING

## CAPABILITY AVAILABLE FOR COACHING

*Please select a Product and Capability when requesting coaching*

- [Part Setup in Fusion 360](#)
- [Product Simulation in Fusion 360](#)



**AUTODESK Fusion 360**

### BENEFITS

- Increase Manufacturing Throughput
- Improve Product Performance
- Improve Quality and Reliability

### AUDIENCE

- Mechanical Engineer
- Product Designer
- Machinist
- Manufacturing Engineer
- CAM Programmer

# InfraWorks

PREMIUM COACHING

## CAPABILITY AVAILABLE FOR COACHING

*Please select a Product and Capability when requesting coaching*

- Design Visualization in InfraWorks
- Existing Conditions Modelling in InfraWorks
- Infrastructure Conceptual Modelling in InfraWorks
- Mobility Simulation in InfraWorks



**AUTODESK** InfraWorks

### BENEFITS

- Improve Win Rate
- Reduce Environmental Impact

### AUDIENCE

- Civil Engineer/Designer
- Land/Site Designer
- Utilities Engineer/Designer

# Inventor Professional

PREMIUM COACHING

## CAPABILITY AVAILABLE FOR COACHING

*Please select a Product and Capability when requesting coaching*

- [Design for Manufacture in Inventor](#)
- [Design Review in Inventor](#)
- [Design Visualization in Inventor](#)
- [Manufacturing Documentation in Inventor](#)
- [Mechanical Design in Inventor](#)
- [Model-Based Definition in Inventor](#)
- [Technical Documentation in Inventor](#)



## AUTODESK Inventor Professional

### BENEFITS

- Increase Product Development Agility
- Improve Product Performance
- Improve Product Desirability

### AUDIENCE

- Manufacturing Engineer
- Product Designer
- Product Engineer

# Navisworks

PREMIUM COACHING

## CAPABILITY AVAILABLE FOR COACHING

*Please select a Product and Capability when requesting coaching*

- Coordination in Navisworks Products
- Design Review in Navisworks Products
- Design Visualization in Navisworks Products



### BENEFITS

- Design Engineer
- BIM Manager
- Architect

### AUDIENCE

- Reduce Number of Constructability Issues
- Improve Collaboration
- Manage Design and Project Complexity

# Autodesk Platform Services

PREMIUM COACHING

## CAPABILITY AVAILABLE FOR COACHING

*Please select a Product and Capability when requesting coaching*

- [Construction Master Scheduling and Simulation](#)
- [Design Automation \(Buildings\)](#)
- [Design Automation \(Civil Infrastructure\)](#)
- [Design Automation \(Manufacturing\)](#)
- [Design Collaboration](#)
- [Estimating](#)
- [Usage Reporting Basics & Premium Reporting API](#)
- [Work Packaging](#)

## **AUTODESK** Platform Services

Previously  **AUTODESK FORGE**

### **BENEFITS**

- Reduce Non-Value-Add Processes
- Increase Product Development Agility
- Improve Time to Market
- Improve Data Driven Decision Making
- Reduce Total Cost of Ownership
- Review Usage Data to Drive Optimization



The topics and products eligible for coaching are subject to change at any time without notice.

[Go to Coaching Request Form](#)

[Return to start](#)

# ReCap Pro

PREMIUM COACHING

## CAPABILITY AVAILABLE FOR COACHING

*Please select a Product and Capability when requesting coaching*

- [Reality Capture in ReCap Pro](#)
- [Reverse Engineering in ReCap Pro](#)
- [Technical Asset Modelling in ReCap Pro](#)
- [Temporary Works Design in ReCap Pro](#)



## BENEFITS

- Improve Design Quality
- Manage Design and Project Complexity
- Reduce Errors and Rework

# Revit

PREMIUM COACHING

## CAPABILITY AVAILABLE FOR COACHING

*Please select a Product and Capability when requesting coaching*

- [Architectural Model Authoring in Revit](#)
- [Design Review in Revit](#)
- [Information Management in Revit](#)
- [Model Co-authoring for Buildings in Revit](#)
- [Structural Model Authoring in Revit](#)



### BENEFITS

- Reduce Overall Design Time
- Increase Workload Capacity
- Exceed Performance Requirements

### AUDIENCE

- Architect
- Structural Engineer
- BIM Manager

# Flow Production Tracking

PREMIUM COACHING

## CAPABILITY AVAILABLE FOR COACHING

*Please select a Product and Capability when requesting coaching*

- [Design Collaboration in Flow Production Tracking](#)
- [Design Review in Flow Production Tracking](#)
- [Pre-Production in Flow Production Tracking](#)
- [Project Management in Flow Production Tracking](#)
- [Shot Management in Flow Production Tracking](#)
- [Workload Management in Flow Production Tracking](#)



## AUTODESK Flow Production Tracking

### BENEFITS

- Increase Number of Creative Iterations
- Improve Resource Planning
- Improve Pipeline Flexibility and Scalability



# Vault Professional

PREMIUM COACHING

## CAPABILITY AVAILABLE FOR COACHING

*Please select a Product and Capability when requesting coaching*

- [Change Management in Vault Professional](#)
- [Data Management in Vault Professional](#)
- [Design Collaboration in Vault Professional](#)
- [Design Review in Vault Professional](#)
- [Manufacturing Documentation in Vault Professional](#)
- [New Product Introduction in Vault Professional](#)



**AUTODESK Vault Professional**

## BENEFITS

- Improve Collaboration
- Increase Product Development Agility
- Reduce Defects and Non-Conformities



Autodesk, 3ds Max, Advance Steel, AutoCAD, Autodesk Construction Cloud, BIM 360, Civil 3D, CFD, Dynamo, FeatureCAM, FormIt, Fusion 360, InfoDrainage, InfraWorks, Inventor, Maya, Navisworks, PowerMill, PlanGrid, Revit, Vault and the Autodesk logo are registered trademarks or trademarks of Autodesk, Inc., and/or its subsidiaries and/or affiliates in the USA and/or other countries. All other brand names, product names, or trademarks belong to their respective holders. Autodesk reserves the right to alter product and services offerings, and specifications and pricing at any time without notice, and is not responsible for typographical or graphical errors that may appear in this document.

© 2024 Autodesk. All rights reserved.