

Global Customer Support & Operations

2017.02.16

Build Your AutoCAD® IQ!

What's New in AutoCAD 2019 !

Presented by: Vinod Balasubramanian

Moderated by: Chonghyuk Lee

 AUTODESK.

About Us:

- Vinod Balasubramanian
 - Autodesk Technical Support Senior Specialist
 - Singapore, SG

- Chonghyuk Lee
 - Autodesk Technical Support Specialist
 - Singapore, SG



Before We Get Started...

- Feel free to leave questions in the chat window.
 - We'll answer as time allows.
- This session will be recorded.
- Links are available in:
 - Registration reminder
 - Post-Webinar survey
 - Chat Window



Dear Autodesk,

This is a reminder that "Build your AutoCAD IQ" will begin in 1 Day on:

Thu, May 14, 2015 2:00 PM - 3:00 PM EDT

Add to Calendar: [Outlook® Calendar](#) | [Google Calendar™](#) | [iCal®](#)

Please send your questions, comments and feedback to:
autodesk.help.webinars@autodesk.com

Beyond the Basics - An Introduction to 3D Modeling in AutoCAD

In this "Build your AutoCAD IQ!" event we'll discuss the basic tools to help you get started with 3D modeling in AutoCAD. We'll start with a tour of the two workspaces provided for 3D modeling, then discuss navigation, modeling and editing tools, and visual styles. If time allows, we will briefly discuss rendering. Please join us!

Additional Webinars: <http://autode.sk/help-webinars>

Session Q&A Feedback: <http://autode.sk/AutoCADWebinars>

Slide deck downloads: <https://autodesk.box.com/AutoCADIQ>



Welcome to the Autodesk Help Webinar Series!

Build Your AutoCAD IQ! Live

- ✓ Hosted by Autodesk Technical Support
- ✓ 20-40 minute demo
- ✓ Q&A in the chat window as time allows
- ✓ Sessions are recorded
- ✓ Links provided in the post-webinar survey

Completed Topics

March 16, 2017

AutoCAD Basics, Viewing and Navigation

April 13, 2017

New Features in AutoCAD 2018

May 18, 2017

Geometry, Drafting, and Precision

June 15, 2017

Layer Management, Properties, and Modification

Build Your AutoCAD IQ! YouTube & Box

Watch Past Webinars
on YouTube
[Build Your AutoCAD IQ!
Webinar Playlist](#)

Download Datasets
from Box to Follow
Along
[Build Your AutoCAD IQ!
Supplemental Dataset
Downloads](#)
(Script, PPT, Sample
DWGs)

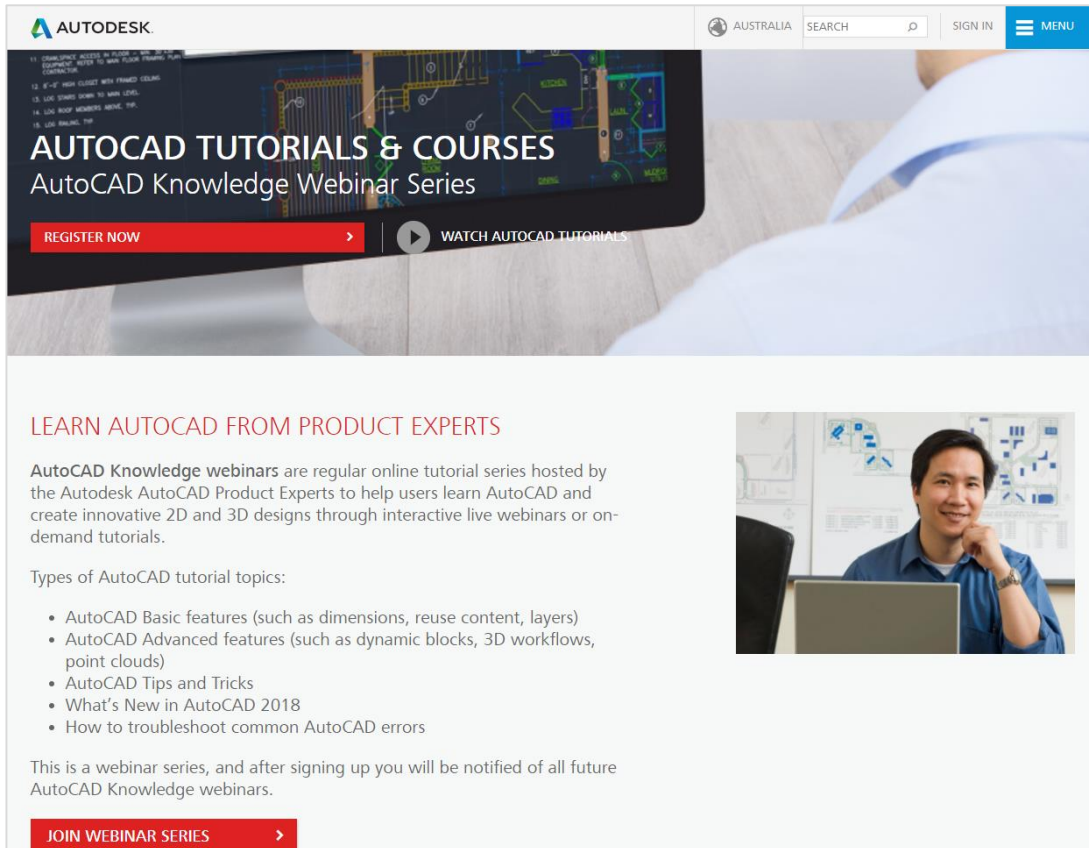
Build Your AutoCAD IQ! Beyond

Sign up & Join the conversation!

- [Build Your AutoCAD IQ! Webinar Landing Page](#)
 - Register for the series, or send to your colleagues
- [Autodesk AutoCAD Community Forums](#)
 - Ask your peers and share your knowledge
- **AutoCAD Customer Council**
 - Join the Beta to influence the future of AutoCAD!
 - For AutoCAD: Autocad.beta@autodesk.com
 - For AutoCAD LT: Autocad.lt.council@autodesk.com
- [Autodesk Help Webinars](#)

Autodesk Help Webinars Landing Pages

- Our Help Webinars are available here, even if you had to miss any of the sessions.. You can watch them any time !



The screenshot shows the Autodesk Australia website landing page for the AutoCAD Knowledge Webinar Series. The page features a navigation bar with the Autodesk logo, the location 'AUSTRALIA', a search bar, a 'SIGN IN' button, and a 'MENU' button. The main content area has a dark background with the text 'AUTOCAD TUTORIALS & COURSES' and 'AutoCAD Knowledge Webinar Series'. Below this, there are two buttons: 'REGISTER NOW' and 'WATCH AUTOCAD TUTORIALS'. The page also includes a section titled 'LEARN AUTOCAD FROM PRODUCT EXPERTS' with a description of the webinar series, a list of topics, and a 'JOIN WEBINAR SERIES' button. A photo of a man in a blue shirt sitting at a desk with a laptop is also visible.

AUTODESK AUSTRALIA SEARCH SIGN IN MENU

AUTOCAD TUTORIALS & COURSES

AutoCAD Knowledge Webinar Series

REGISTER NOW WATCH AUTOCAD TUTORIALS

LEARN AUTOCAD FROM PRODUCT EXPERTS

AutoCAD Knowledge webinars are regular online tutorial series hosted by the Autodesk AutoCAD Product Experts to help users learn AutoCAD and create innovative 2D and 3D designs through interactive live webinars or on-demand tutorials.

Types of AutoCAD tutorial topics:

- AutoCAD Basic features (such as dimensions, reuse content, layers)
- AutoCAD Advanced features (such as dynamic blocks, 3D workflows, point clouds)
- AutoCAD Tips and Tricks
- What's New in AutoCAD 2018
- How to troubleshoot common AutoCAD errors

This is a webinar series, and after signing up you will be notified of all future AutoCAD Knowledge webinars.

JOIN WEBINAR SERIES

AutoCAD Landing Pages by Country :

www.autodesk.com.au/campaigns/autocad-tutorials

www.autodesk.com.sg/campaigns/autocad-tutorials

www.autodesk.in/campaigns/autocad-tutorials

Autodesk Knowledge Network

knowledge.autodesk.com

AutoCAD LT

- [Getting Started](#)
- [Learn & Explore](#)
- [Downloads](#) (Hotfixes, Service Packs, etc.)
- [Troubleshooting](#)
- [System Requirements](#)

[Customer Service](#)

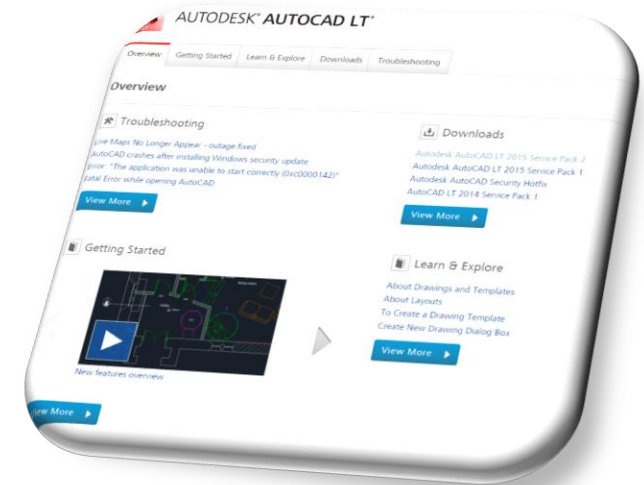
[Installation, Activation, & Licensing](#)

[Account Management](#)

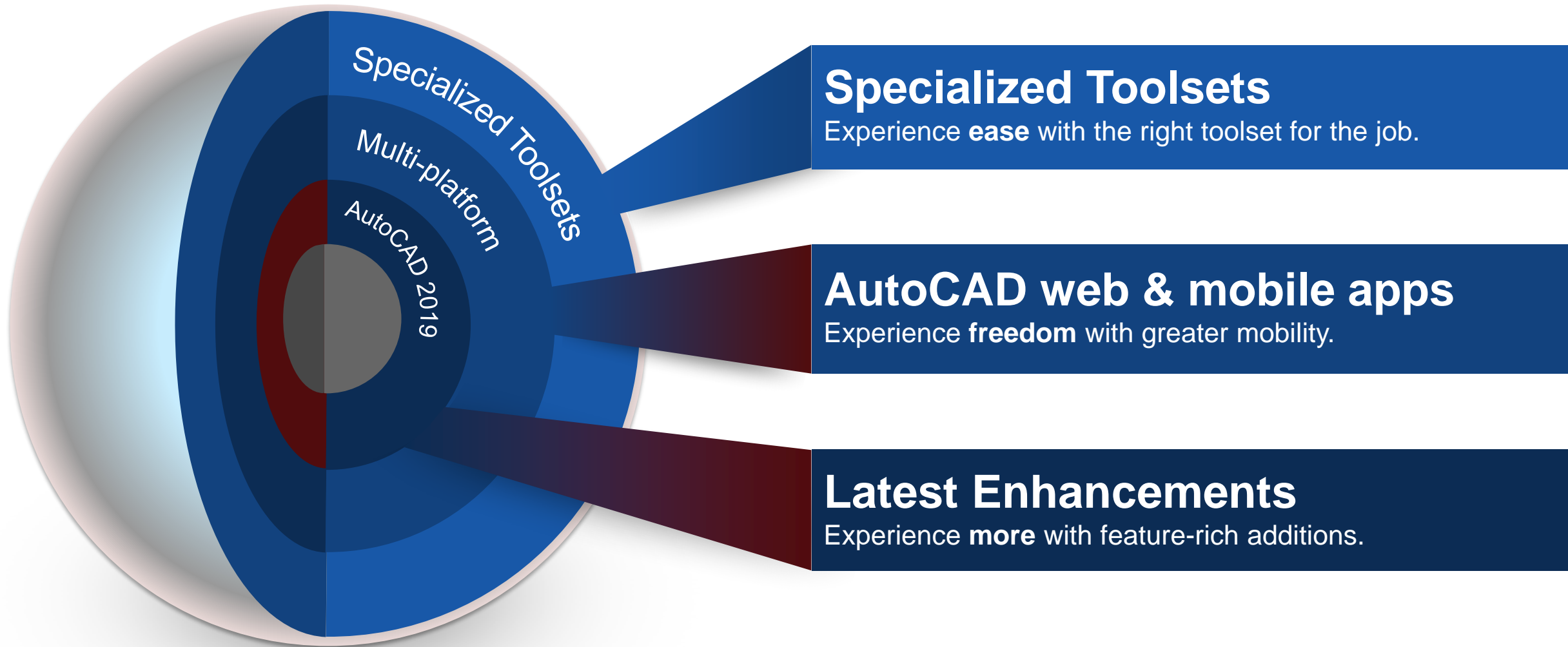
AutoCAD

- [Getting Started](#)
- [Learn & Explore](#)
- [Downloads](#) (Hotfixes, Service Packs, etc.)
- [Troubleshooting](#)
- [System Requirements](#)

[Community](#) (Forums, Blogs, Ideas, Articles, Screencast.)

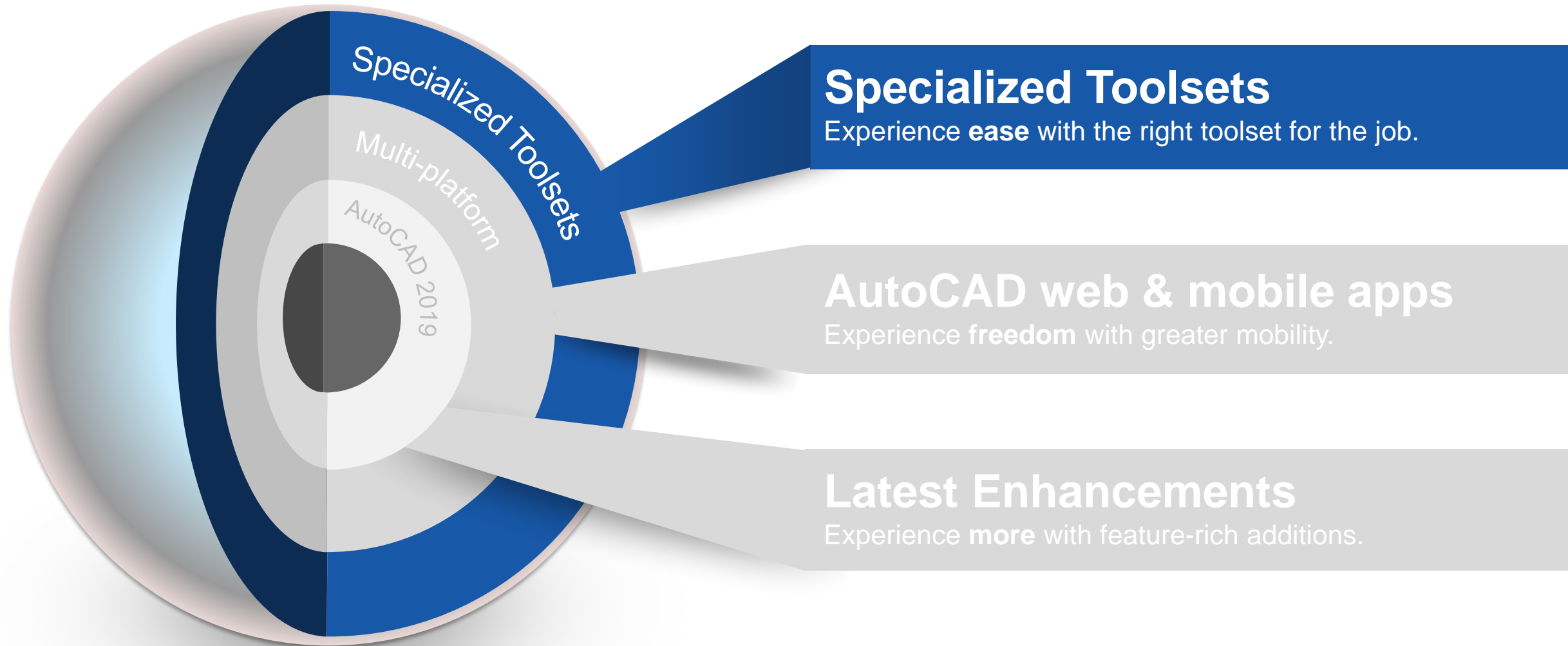


Delivering more value



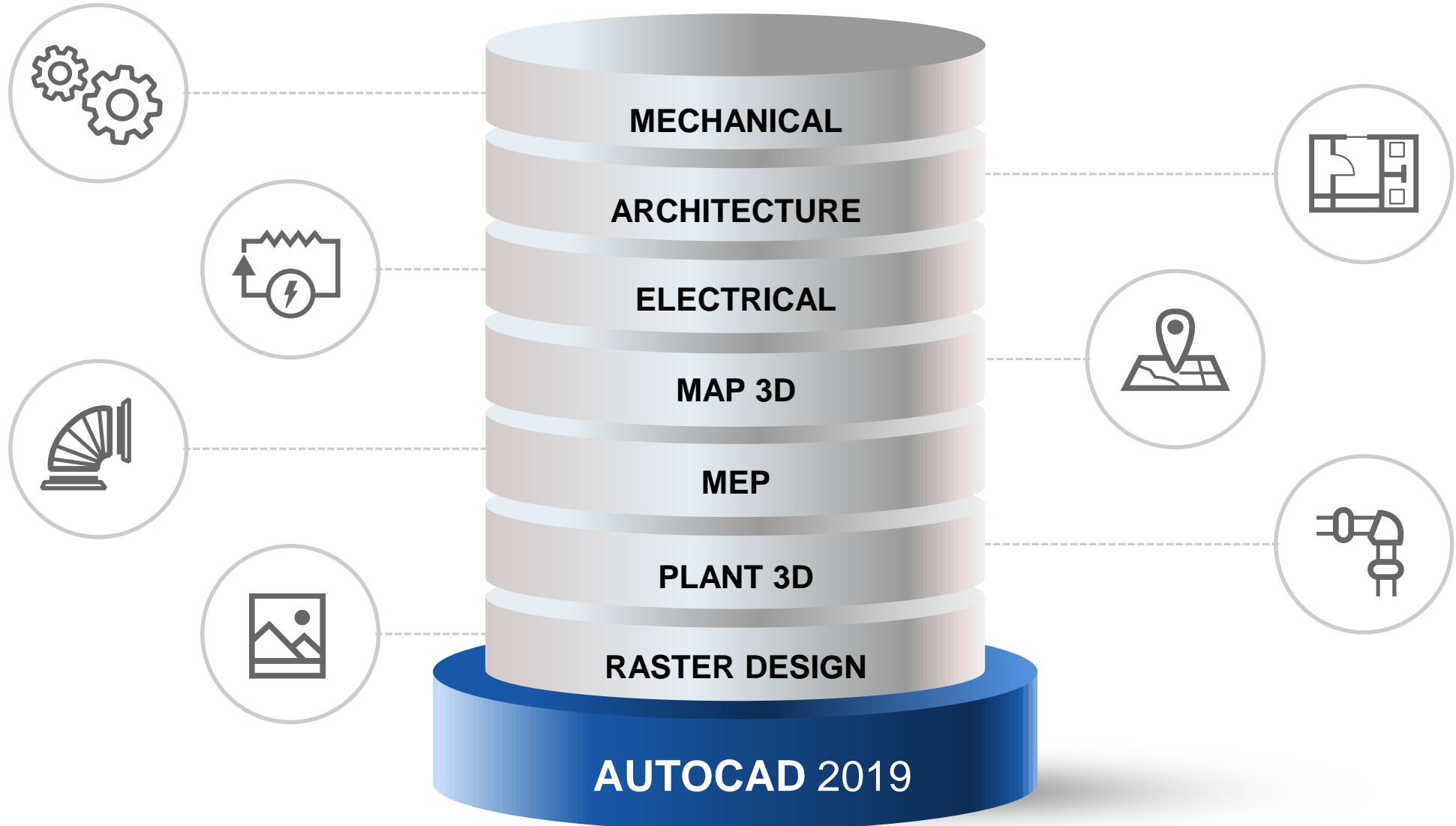
Only One. AutoCAD.

Delivering more value



AutoCAD including specialized toolsets

Subscribers get access to industry-specific toolsets



Key Benefits



Intelligent

Access libraries of symbols, parts and detail components.

Faster

Automate the creation of annotations, layers, and properties.

Familiar

Work in the familiar AutoCAD interface while using industry-specific functionality.

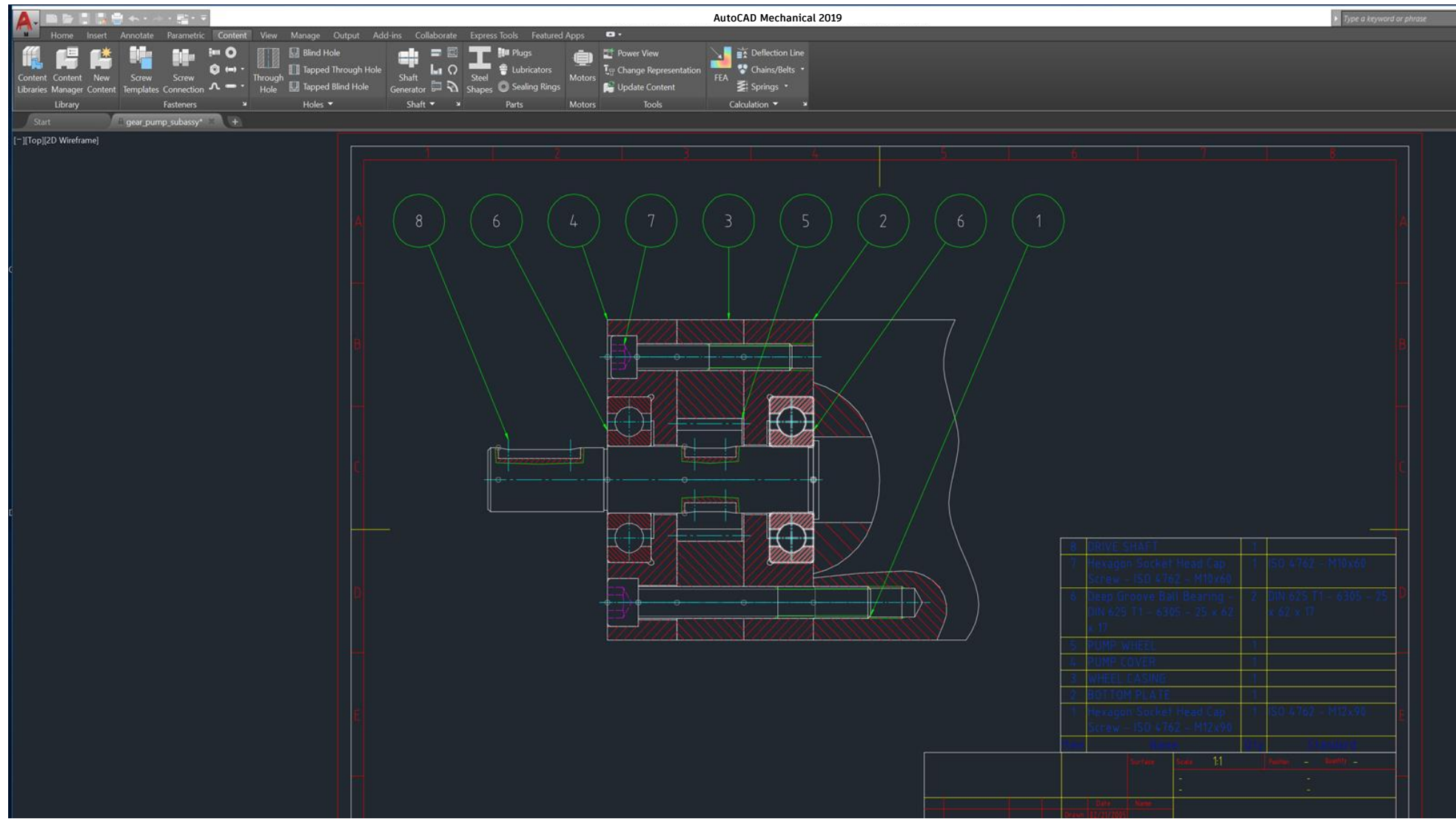
Efficient

Extend workflows across disciplines more effectively.

AutoCAD including specialized toolsets

Mechanical Toolset

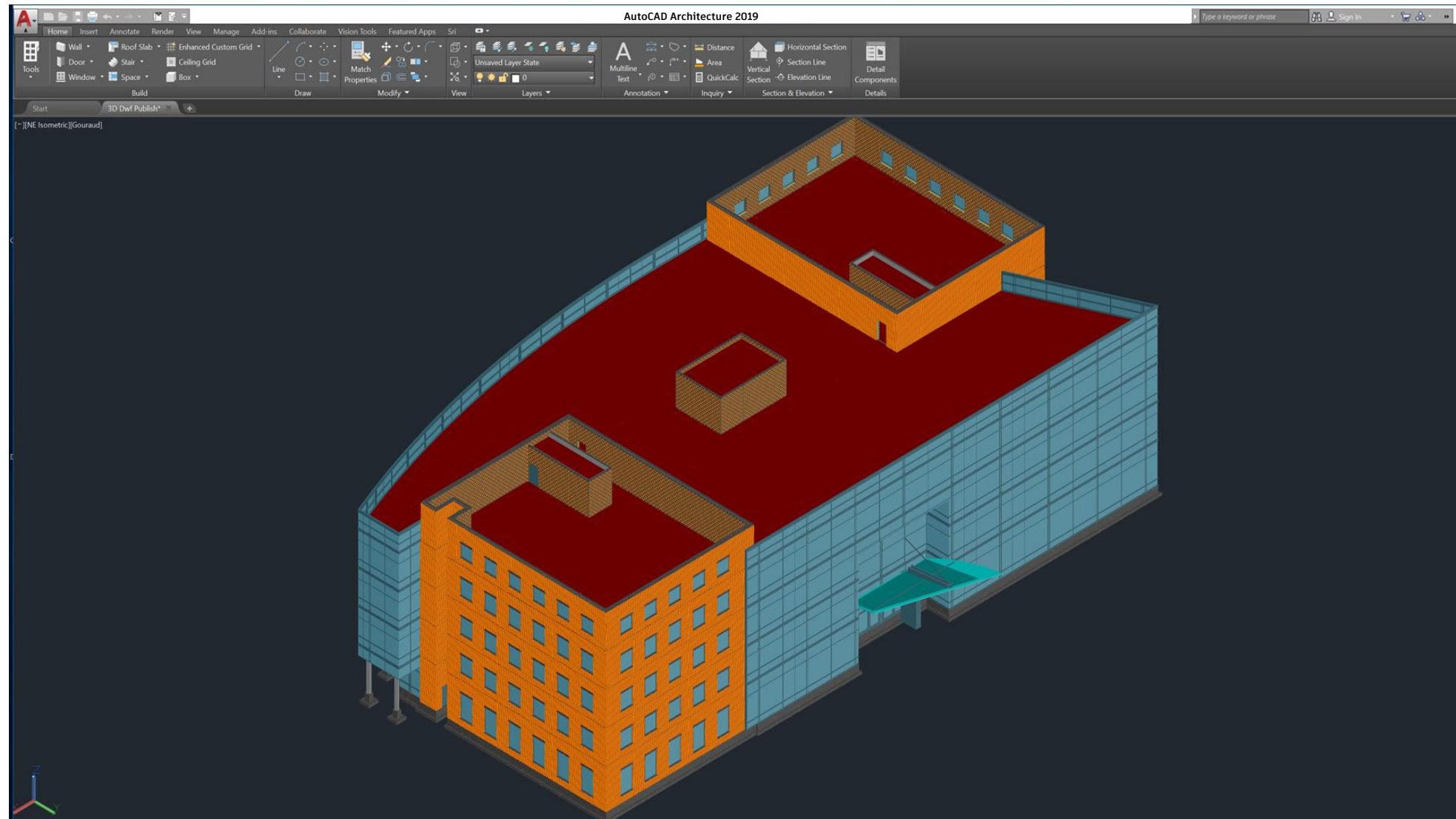
- 700,000+ intelligent manufacturing parts, features and symbols.
- Automate generating machine components and creating bills of material.



AutoCAD including specialized toolsets

Architecture Toolset

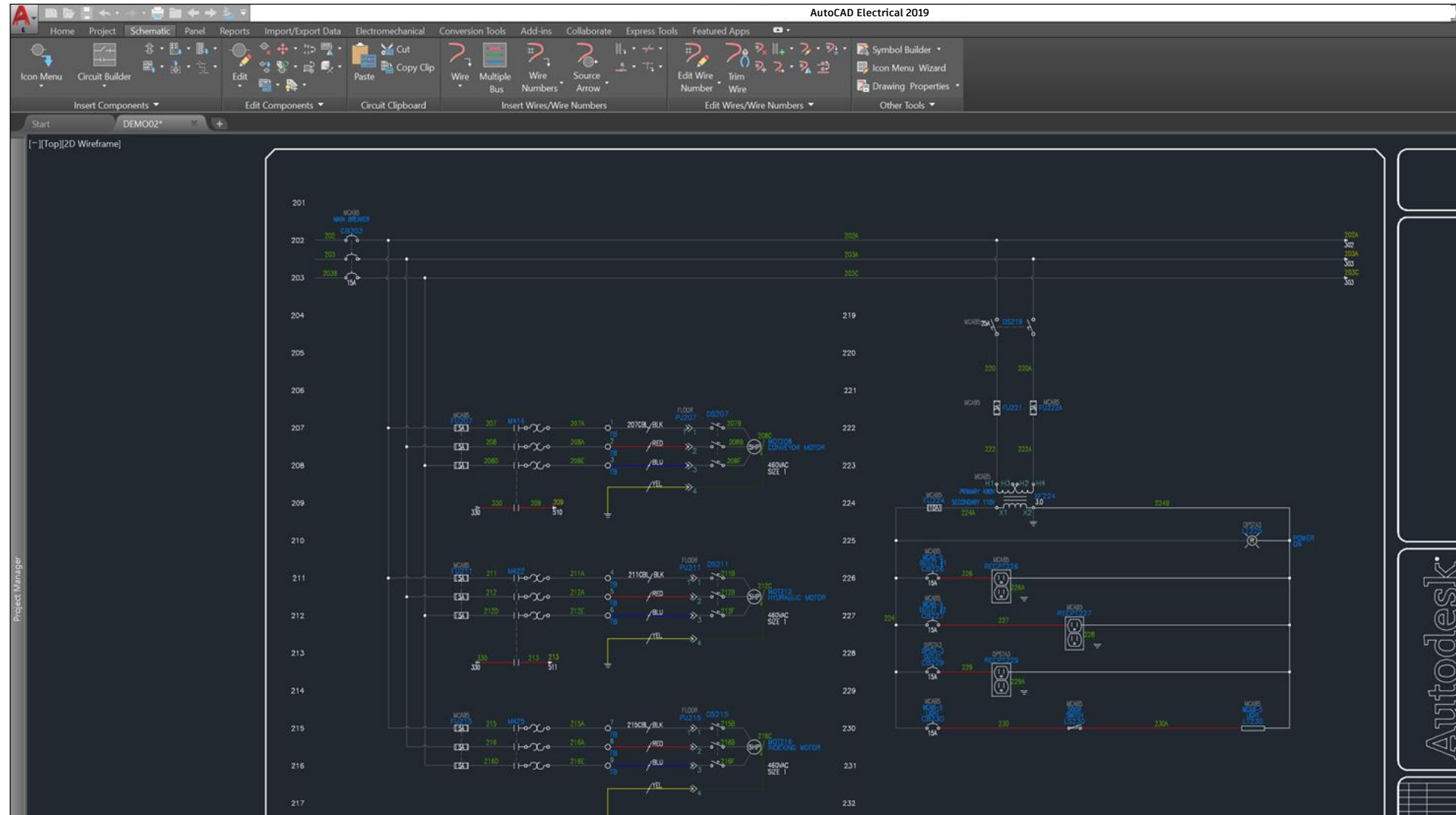
- 8,000+ intelligent architectural objects and styles.
- Automate floorplans, sections, and elevations.



AutoCAD including specialized toolsets

Electrical Toolset

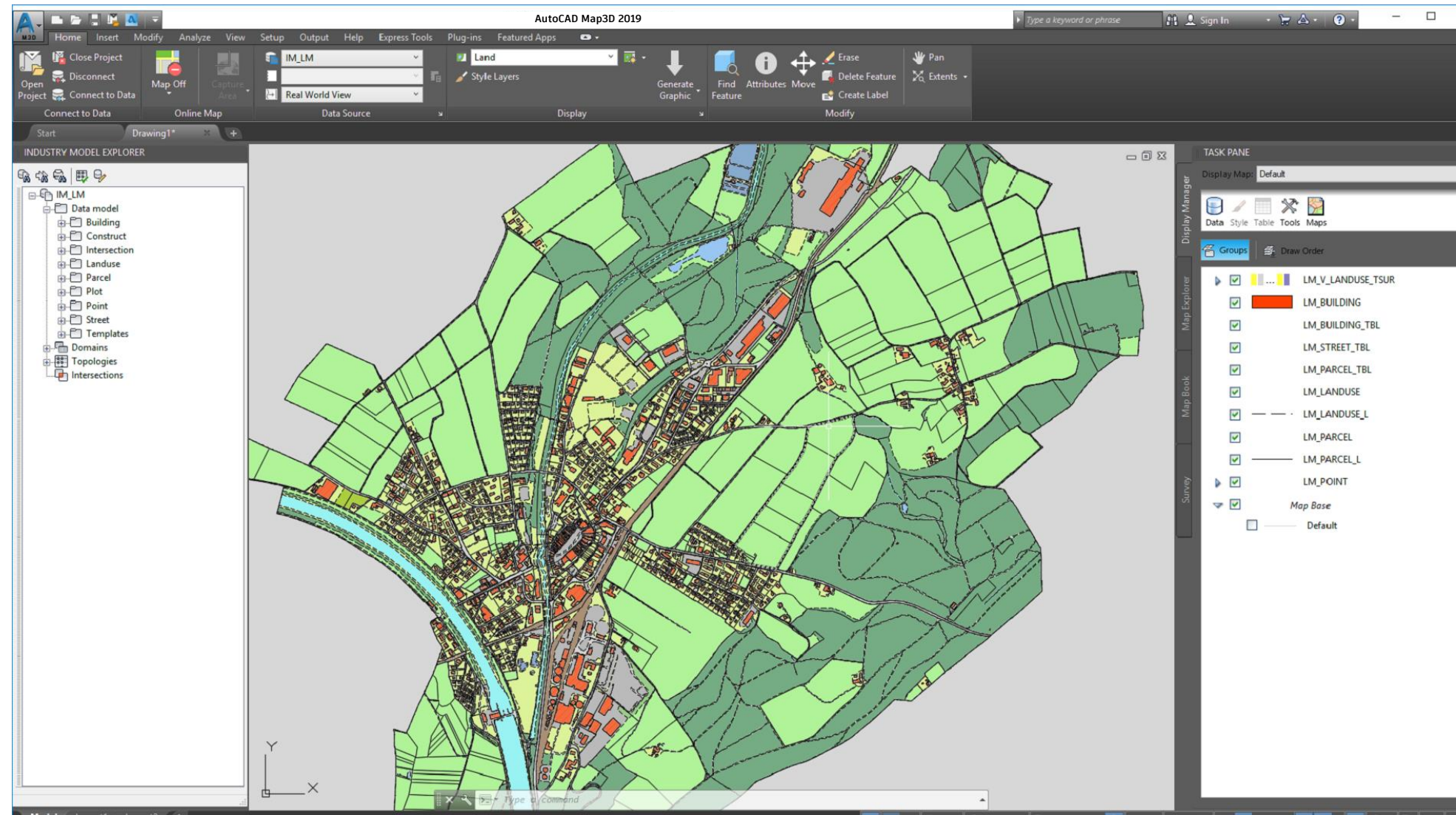
- 65,000+ intelligent electrical symbols for electrical controls systems.
- Design panel layouts and schematic diagrams.



AutoCAD including specialized toolsets

Map 3D Toolset

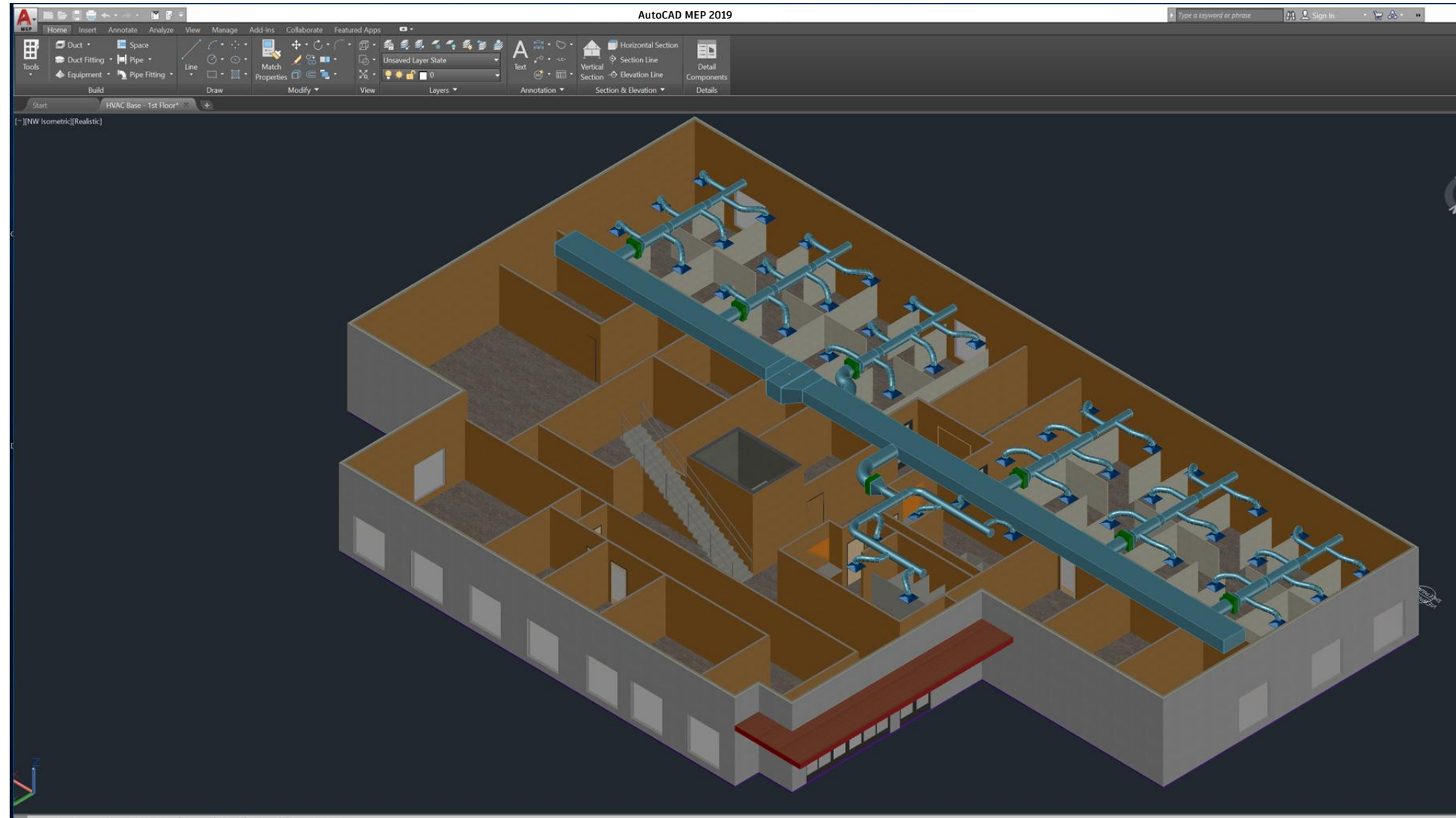
- Incorporate GIS and CAD data to support planning, design, and data management.
- Access spatial data stored in files, databases and web services.



AutoCAD including specialized toolsets

MEP Toolset

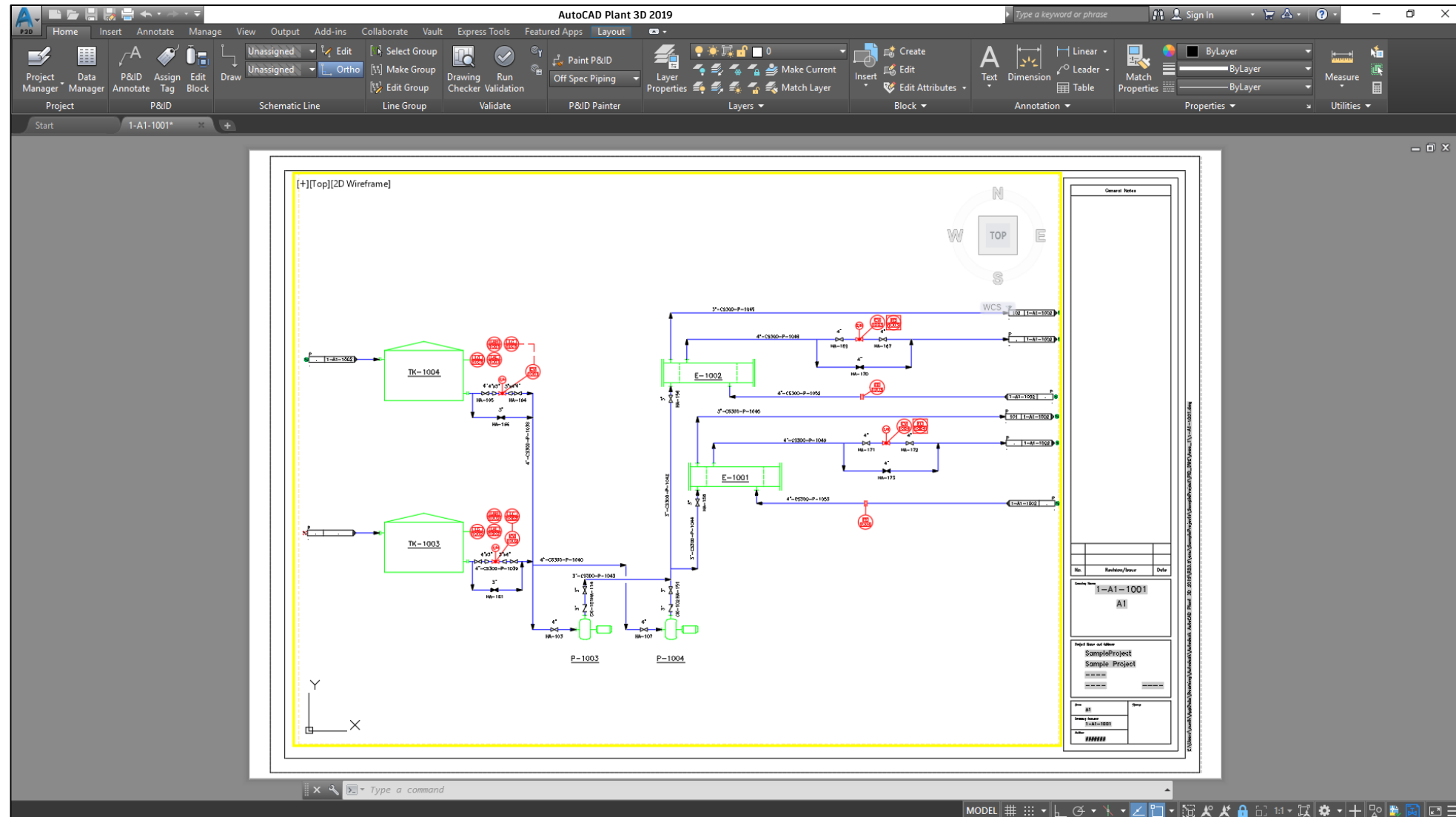
- 10,500+ intelligent mechanical, electrical, and plumbing objects.
- Design ductwork, electrical conduit, and circuiting for HVAC, plumbing, and electrical.



AutoCAD including specialized toolsets

Plant 3D Toolset

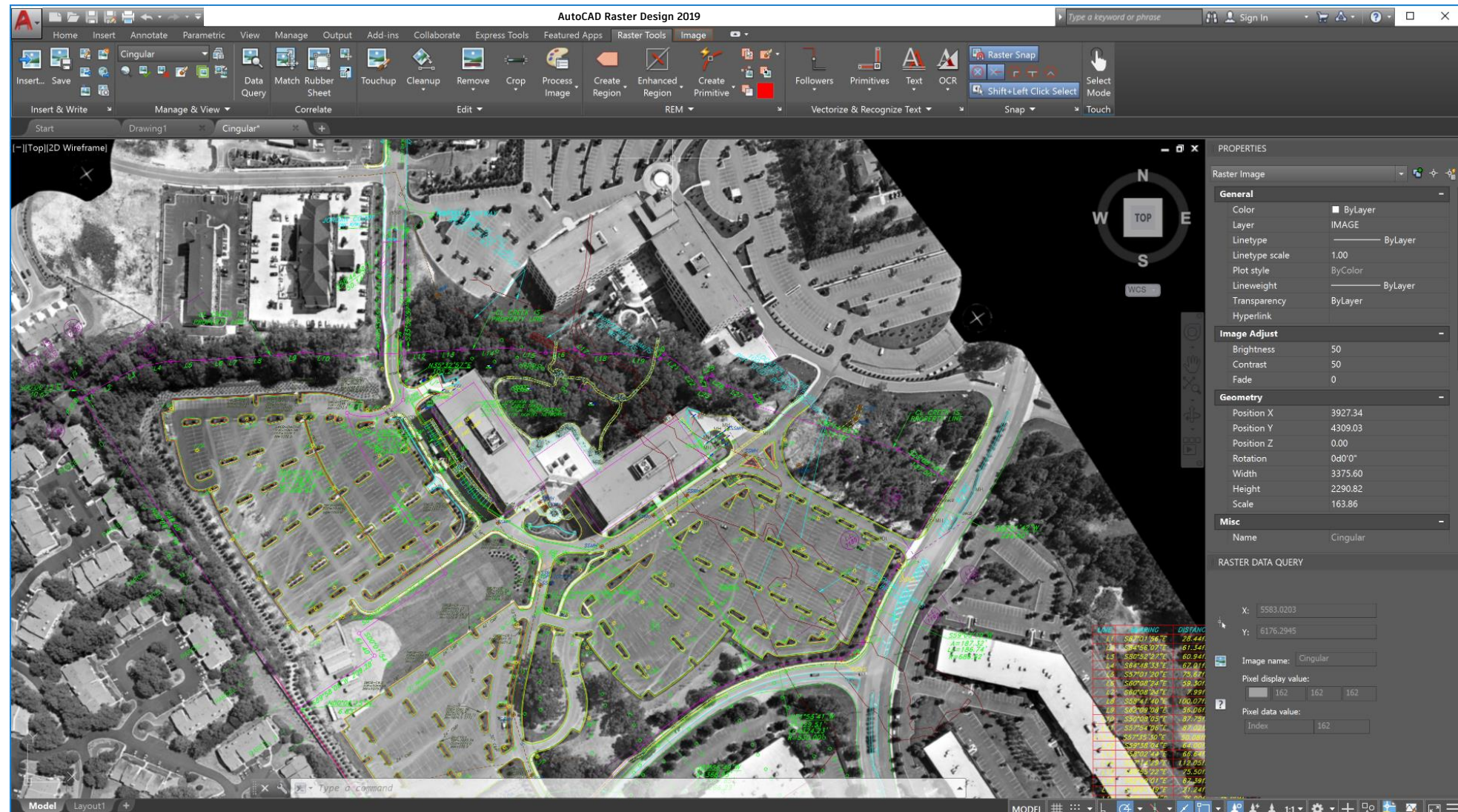
- Produce P&IDs and integrate into a 3D plant design model.
- Create schematic diagrams and plant layouts.



AutoCAD including specialized toolsets

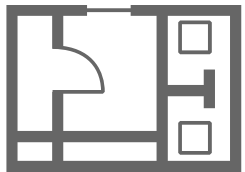
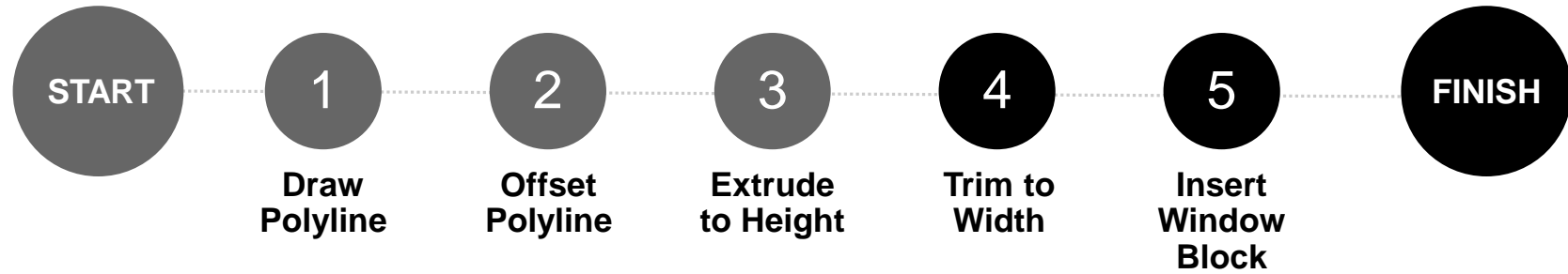
Raster Design Toolset

- Edit scanned drawings and convert raster images into DWG objects.
- Edit, clean up and transform images, manipulate raster entities, and create vector shapes.

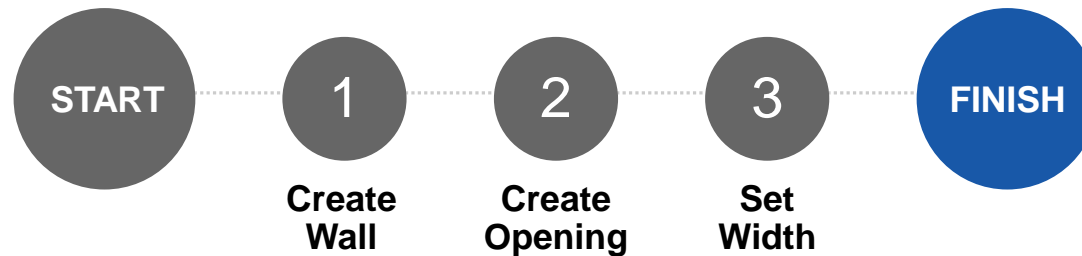


Example with Architecture toolset

AUTOCAD



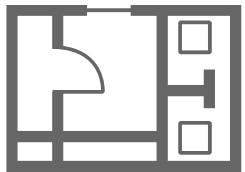
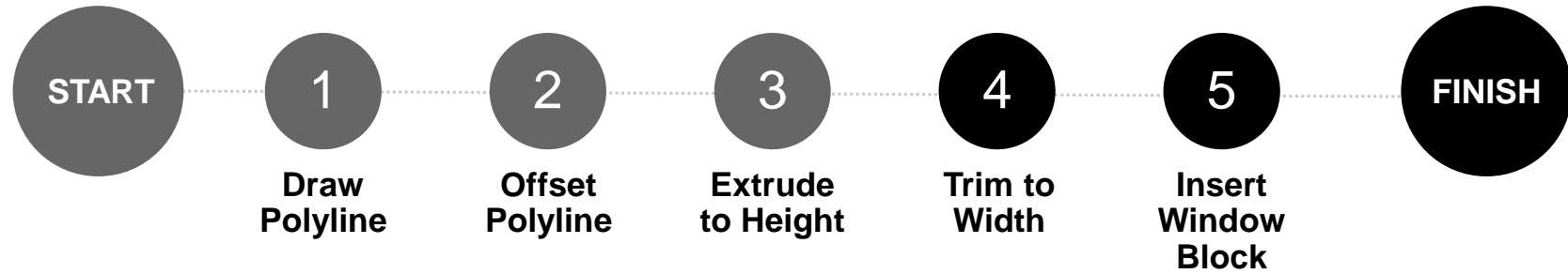
ARCHITECTUR
E
TOOLSET



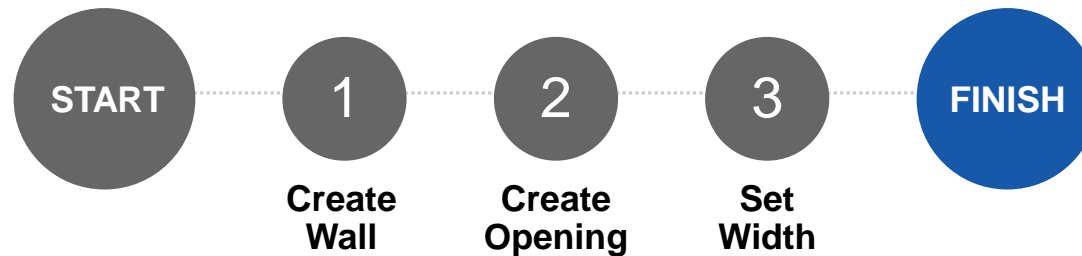
Faster and more efficient = **Real Value**

Example with Architecture toolset

AUTOCAD



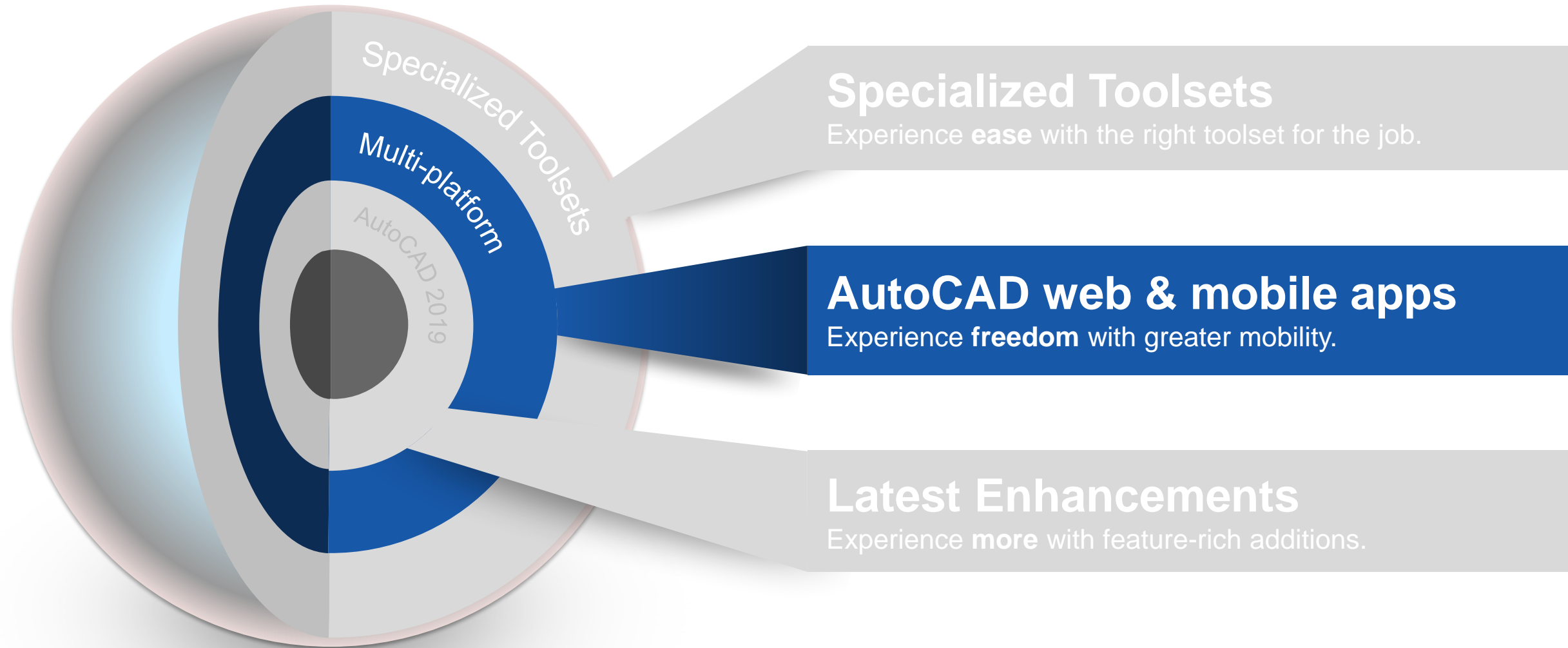
ARCHITECTUR
E
TOOLSET



Faster and more efficient = **Real Value**

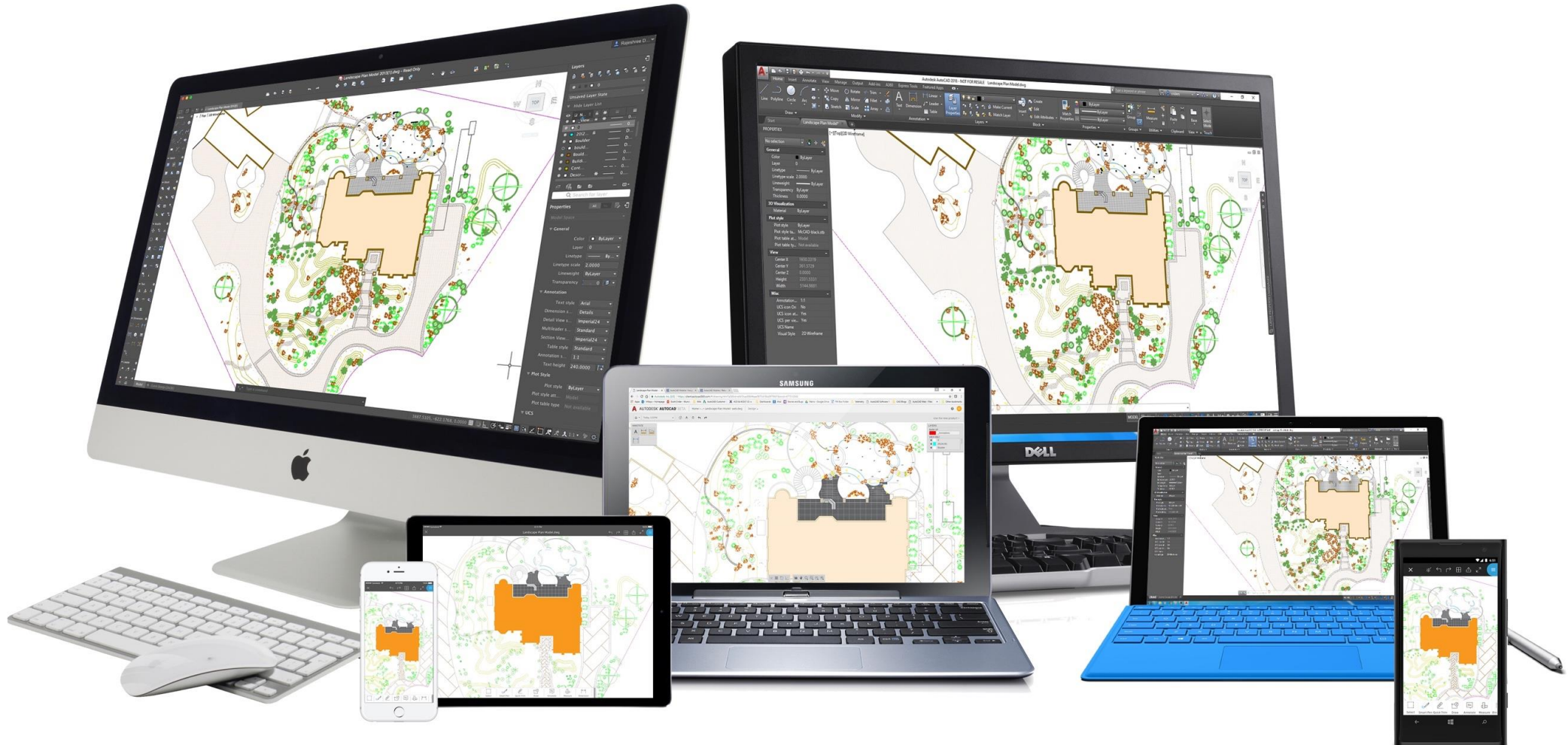
AutoCAD web & mobile apps

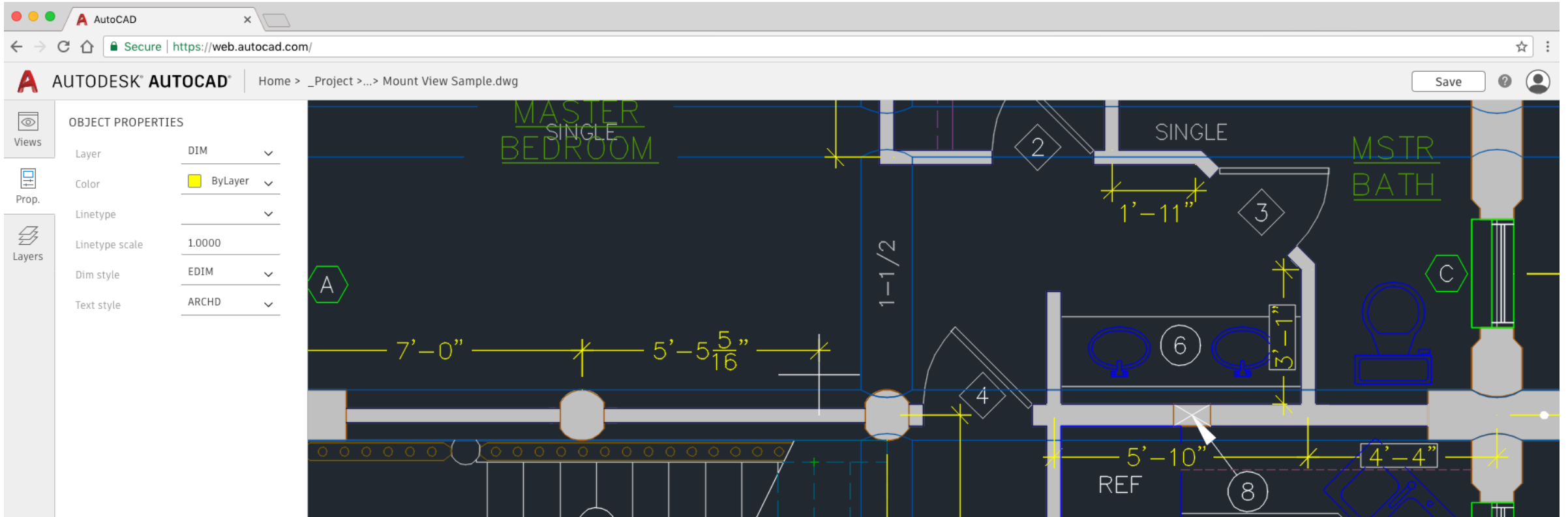
Work anytime, anywhere



Connected AutoCAD

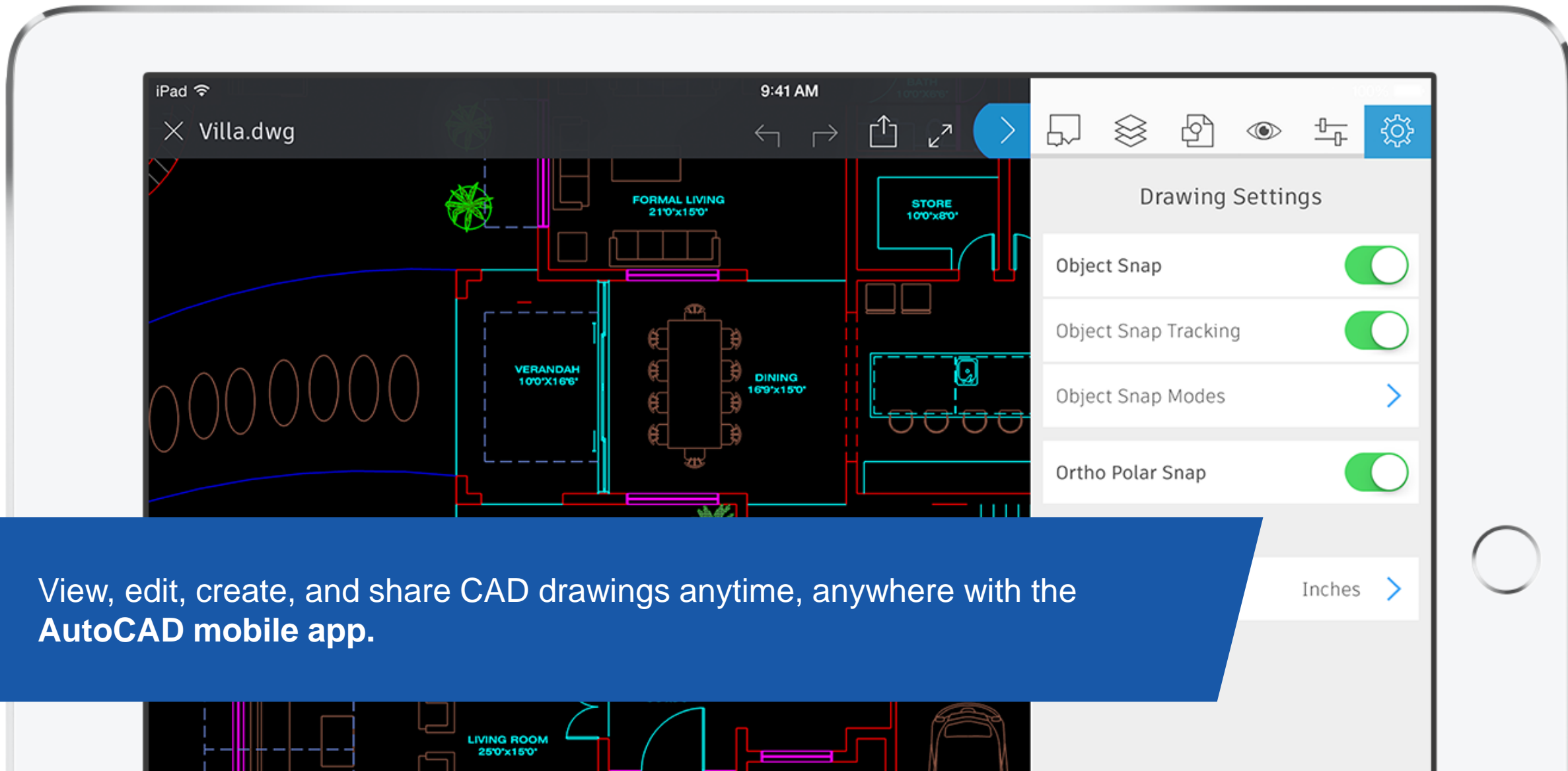
Cohesive Across Platforms





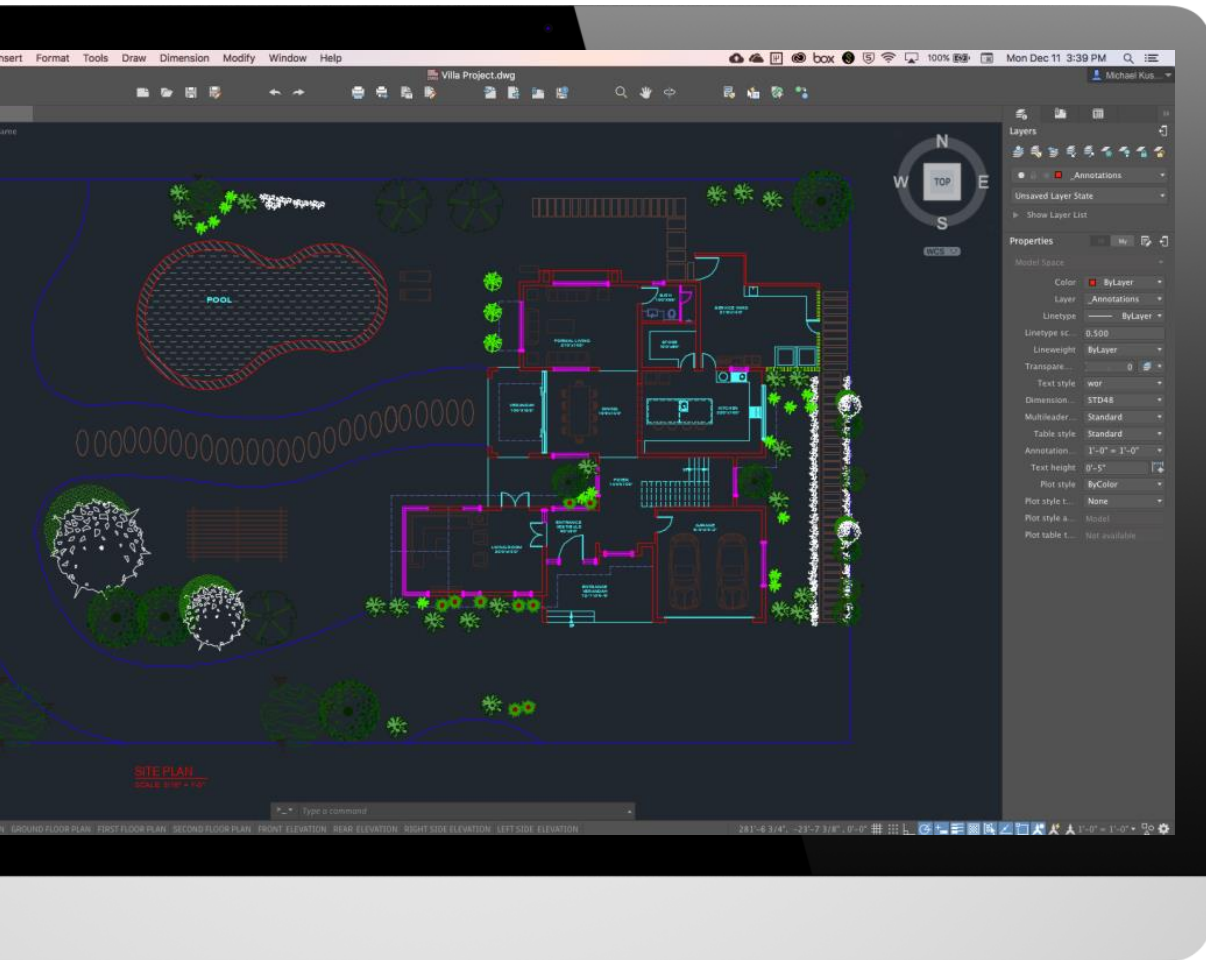
Edit, create, and view CAD drawings in a simplified web interface from any computer with the **AutoCAD web app**.





View, edit, create, and share CAD drawings anytime, anywhere with the **AutoCAD mobile app**.

Save to AutoCAD web & mobile

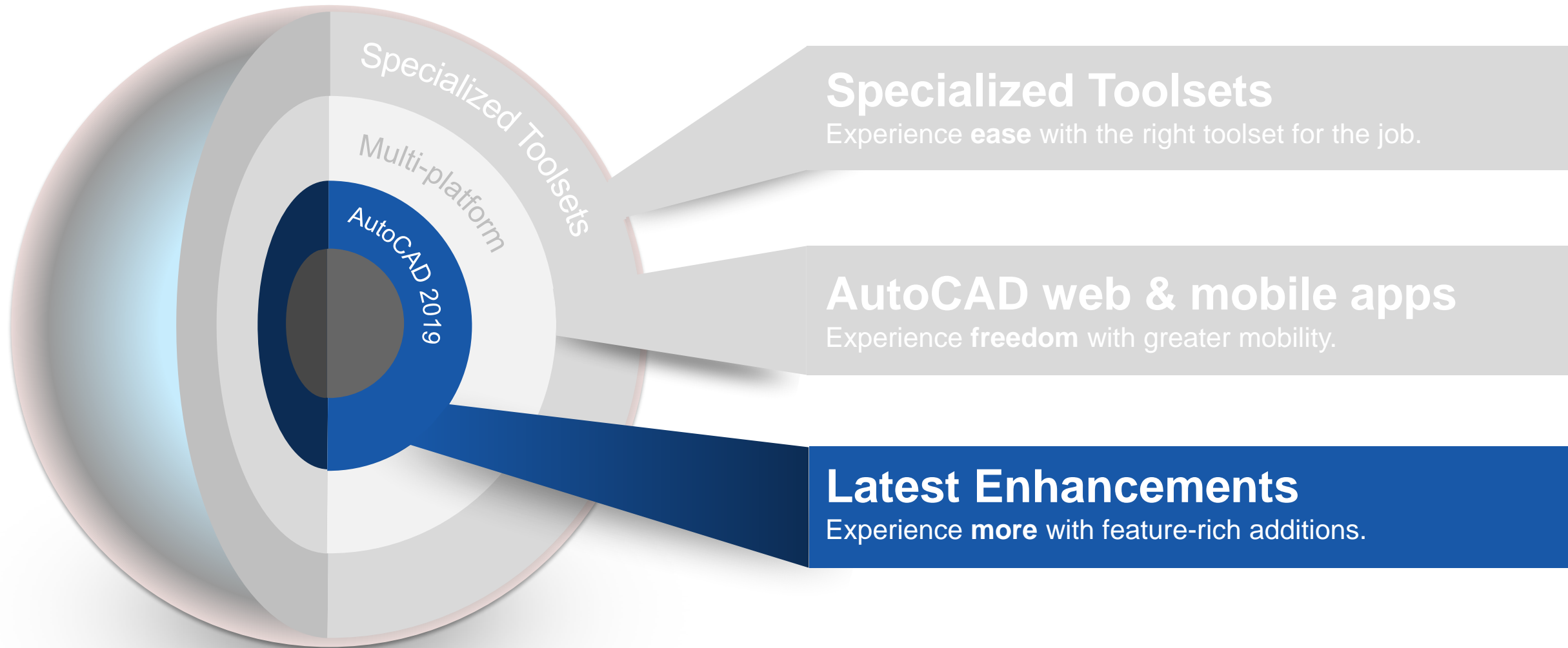


Open from AutoCAD web & mobile

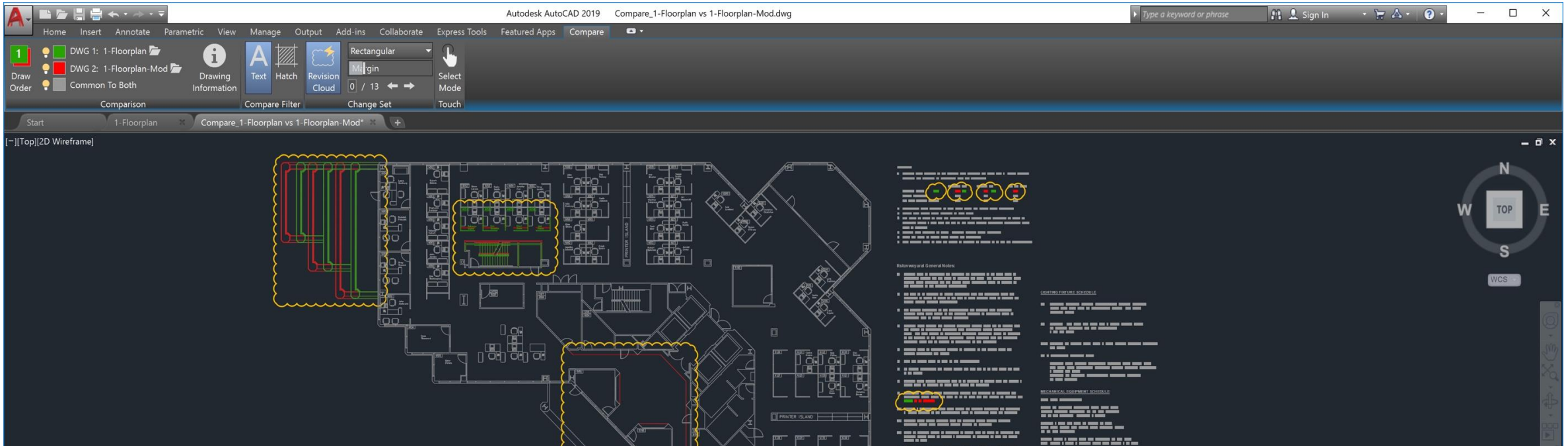


Latest Enhancements

New and updated features



DWG Compare



New **DWG Compare** tools enable identification of graphical differences between two revisions of any drawing.

Shared Views

Autodesk AutoCAD 2019 Mountview Cabin.dwg

Autodesk Viewer | Free

Autodesk, Inc. [US] | <https://viewer.autodesk.com/id/dXJuOmFkc2sub2JqZWNoZcpvcy5VYmplY3Q6YTM2MHZpZXdldi90NmJmNTA3OTk4Nzk3OTIxMjUzXzdlMTRIYWRiWlU4NDctNDMwNy05YzFkLT...>

For quick access, place your bookmarks here on the bookmarks bar. Import bookmarks now...

AUTODESK VIEWER > Mountview Cabin.collaboration

Views

FLAG NOTES

- 1/4"=1'-0" NEW DIMENSIONS SHALL BE SHOWN UNLESS OTHERWISE SPECIFIED. THE GROUND LOGS WITH FULL SCHEMATIC AND SMOKE DETECTOR CORNERS - 9 LOG COURSES, SPACING 8'-0" B.C.
- REPLACE ROOF WITH PRIMED PERIMETER WALLS AND CLAYED STONE FINISH. COMPLY WITH MANUFACTURER'S AND CODE REQUIREMENTS.
- LOG SLAM SYSTEM (OF TRAILS, IS RIDES TOTAL, TOTAL RISE = 118'-0" WITH 8'-0" OF LOG WALL, 2'-0" SPACES FOR SECOND FLOOR JOIST AND 3'-0" FOR FINISHED DECKING.
- 8'-0" WIDE LOGS WITH FINISHED PAINT ACCESS.
- 8'-0" WIDE LOGS WITH FINISHED GLASS WALL AT TAIL.
- DOUBLE VINYL.
- UPPER LEVEL LOG BEAMS ABOVE, TYP.
- 1 1/2" X 1/4" LOG COLUMNS BY LOG WARD IN FINISHED WALL WITH SETTING DEVICE. BRACKET ACCESS AS REQUIRED.
- LOG RAILING, TYP.
- LOG DECK RAILING OPTIONAL OR IF DECK HEIGHT EXCEEDS 36", TYP.
- CONFORMANCE ACCESS IN FLOOR - WALL 30" X 30" OR AS REQUIRED BY MECHANICAL CONTRACTOR. REFER TO MAIN FLOOR FINISHING PLAN EXACT LOCATION BY CONTRACTOR.
- 8'-0" HIGH CLOSET WITH FINISHED CEILING.

Symbol	Quantity	Type	Finish	Glass	Nom. Width	Nom. Height	R.O. Width	R.O. Height	Manufacturer	Code	Remarks
(A)	2	Double Hung	Interior	Insulating	24"	40"	24.00"	41.00"	Weather Shield	113000	
(B)	2	Double Hung	Interior	Insulating	24"	24"	24.00"	24.00"	Weather Shield	113000	Trimmed
(C)	3	Double Hung	Interior	Insulating	24"	24"	24.00"	24.00"	Weather Shield	113012	Upper Lvl. - Top of window at FIP
(D)	1	Double Hung	Interior	Insulating	12"	24"	12.00"	24.00"	Weather Shield	113012	
(E)	3	Double Hung	Interior	Insulating	24"	30"	24.00"	31.00"	Weather Shield	113014	
(F)	1	Double Hung	Interior	Insulating	24"	24"	24.00"	24.00"	Weather Shield	113014	40" Aperture
(G)	1	Sh-Side	Interior	Insulating	60"	40"	60.00"	41.00"	Weather Shield	1600-BROWN-ROCK	
(H)	1	Double Hung	Interior	Insulating	24"	40"	24.00"	41.00"	Weather Shield	21-2004	Double Title
(I)	3	Double Hung	Interior	Insulating	24"	24"	24.00"	24.00"	Weather Shield	113000	Open
(J)	1	Double Hung	Interior	Insulating	24"	24"	24.00"	24.00"	Weather Shield	21-2004	Double Title
(K)	2	Panel	-	Insulating	24"	24"	24.00"	24.00"	Weather Shield	21-2004	Double Title
(L)	2	Panel	-	Insulating	24"	24"	24.00"	24.00"	Weather Shield	21-2004	Double Title

Symbol	Quantity	Type	Incl. Etc.	Material	Width	Height	R.O. Width	R.O. Height	Swing	Remarks
(1)	2	Full-Leaf French	Exterior	WeatherShield	6'-0"	6'-0"	6'-0.00"	6'-0"	RP	W/LH -
(2)	3	6-Panel	Interior	WeatherShield	2'-0"	6'-0"	2'-0"	6'-0"	RP	RH -
(3)	1	6-Panel	Interior	WeatherShield	2'-0"	6'-0"	2'-0"	6'-0"	RP	LH -
(4)	3	6-Panel	Interior	WeatherShield	2'-0"	6'-0"	2'-0"	6'-0"	RP	RH -
(5)	4	6-Panel	Interior	WeatherShield	2'-0"	6'-0"	2'-0"	6'-0"	RP	LH -
(6)	1	6-Panel	Interior	WeatherShield	4'-0"	6'-0"	4'-0"	6'-0"	RP	W/LH -
(7)	1	6-Panel	Interior	WeatherShield	4'-0"	6'-0"	4'-0"	6'-0"	RP	W/LH -
(8)	1	Half-Light	Exterior	WeatherShield	6'-0"	6'-0"	6'-0.00"	6'-0"	RP	LH -
(9)	2	Full-Light	Exterior	WeatherShield	6'-0"	6'-0"	6'-0.00"	6'-0"	RP	LH -
(10)	1	6-Panel	Interior	WeatherShield	2'-0"	6'-0"	2'-0"	6'-0"	RP	LH -

UPPER FLOOR PLAN
1/8" = 1'-0"

MAIN FLOOR PLAN
1/8" = 1'-0"

SQ FOOTAGE SUMMARY

FLOOR	AREA	PERIMETER
MAIN FLOOR	1,521	1,178
SECOND FLOOR	888	888
SCREENING PORCH	88	88

WINDOW SCHEDULE

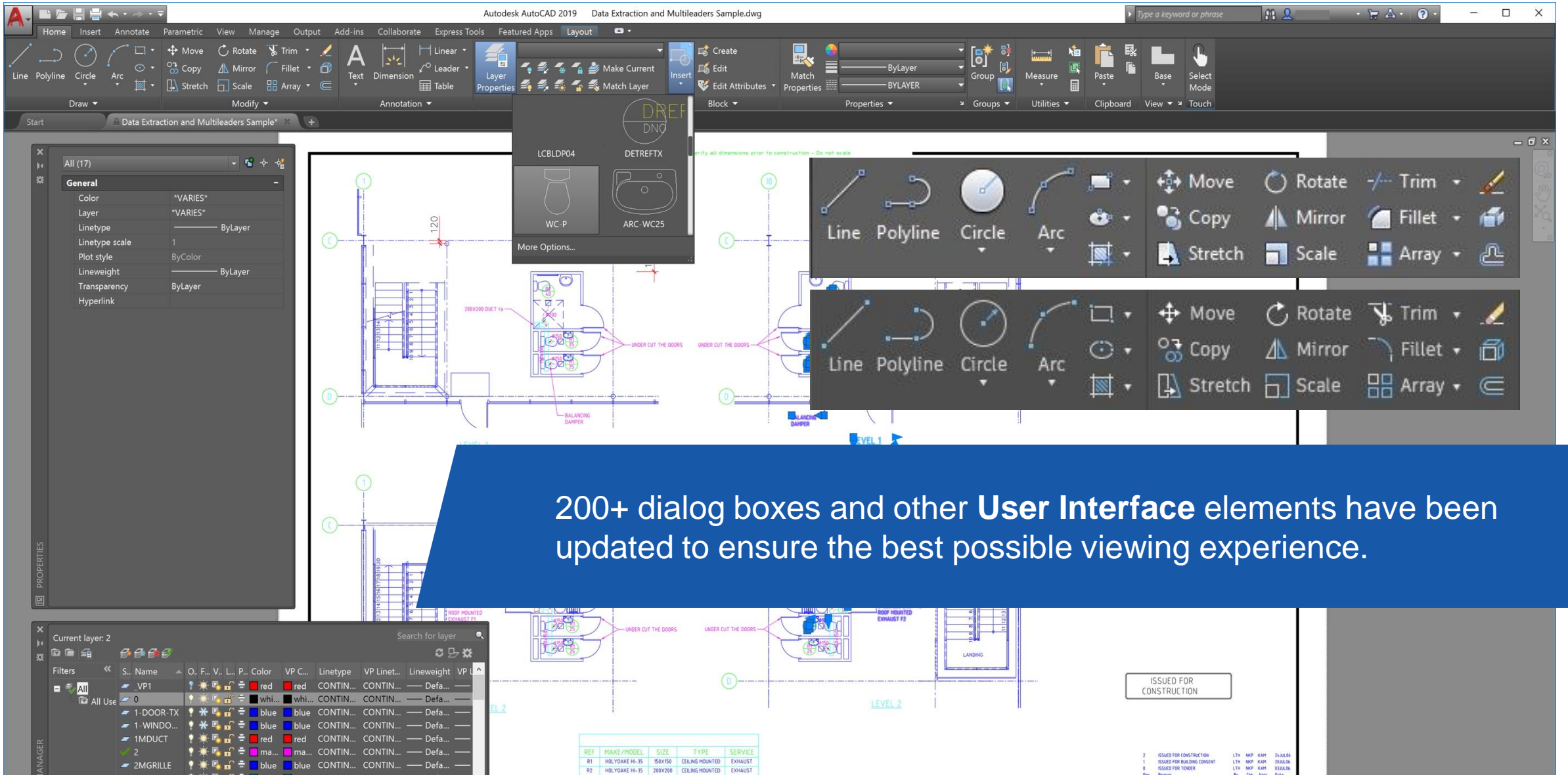
DOOR SCHEDULE

SHARED VIEWS

- New Shared View
- By: Date created
- Mountview Cabin.collaboration
 - Created on January 5, 2018
 - Expires in 30 days
- Erosion Control Plan.collaboration
 - Created on January 5, 2018
 - Expires in 30 days
- Landscape Plan Model.collaboration
 - Created on January 5, 2018
 - Expires in 30 days
- Assembly Sample.collaboration
 - Created on January 5, 2018
 - Expires in 30 days

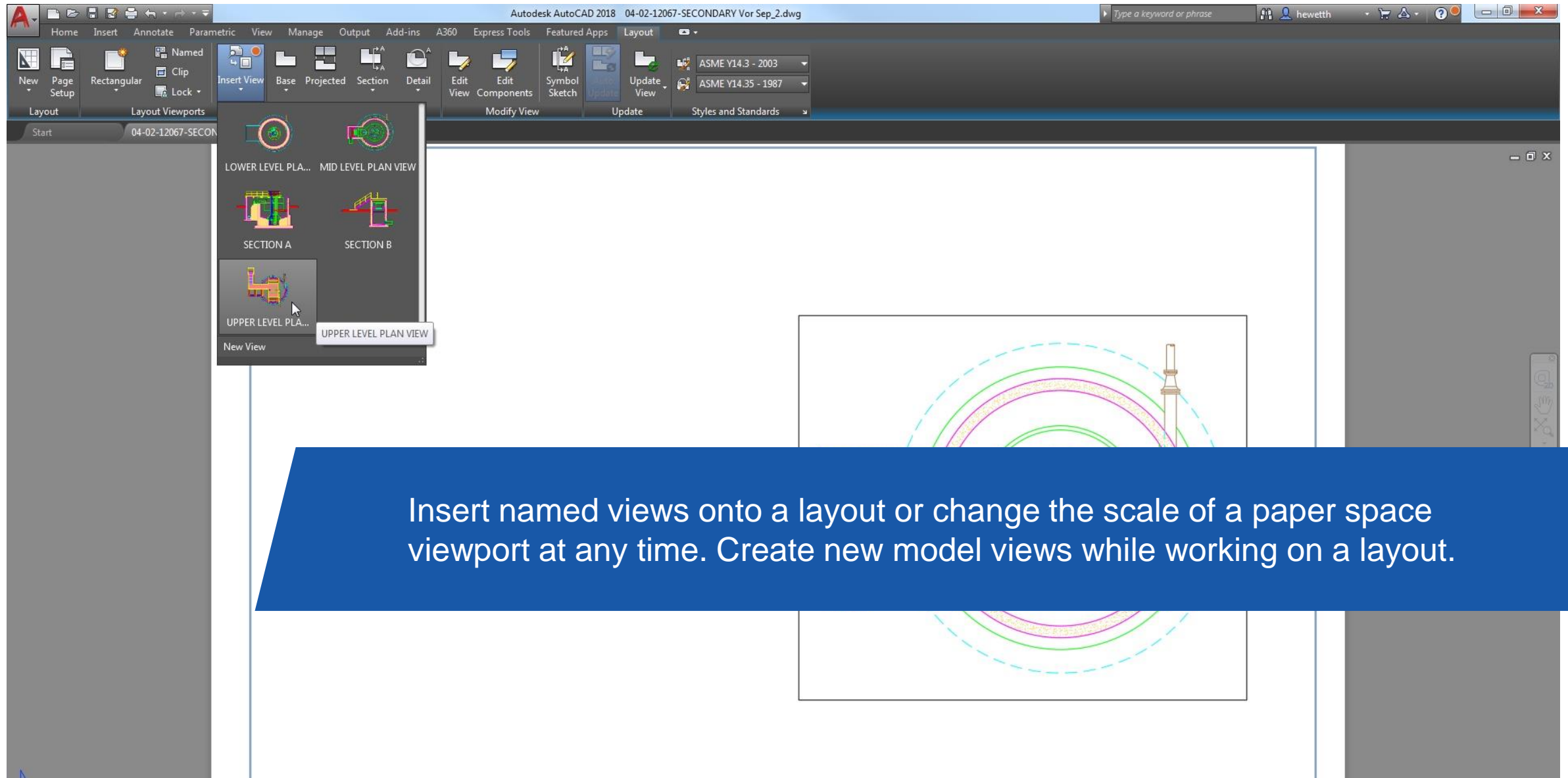
The Shared Views feature makes it easier to share designs with stakeholders.

User Interface



200+ dialog boxes and other **User Interface** elements have been updated to ensure the best possible viewing experience.

Views and viewports



Insert named views onto a layout or change the scale of a paper space viewport at any time. Create new model views while working on a layout.

AutoCAD 2019 - Educational Plot Stamp

Key Updates :

- ❖ How the Plot Stamp Appears
- ❖ Removing the Educational Plot Stamp
- ❖ Customer [FAQ](#) has been Updated

May I remove the education watermark produced in AutoCAD 2019 and/or AutoCAD 2019 vertical products?

It is intended that this watermark promotes the legitimate use of AutoCAD software licensed by students and educators through the Autodesk Education Community and any action to bypass the watermark is a violation of your license terms.

AutoCAD 2019 changes to “GRAPHICSCONFIG” Command

❖ Graphics Performance Modes

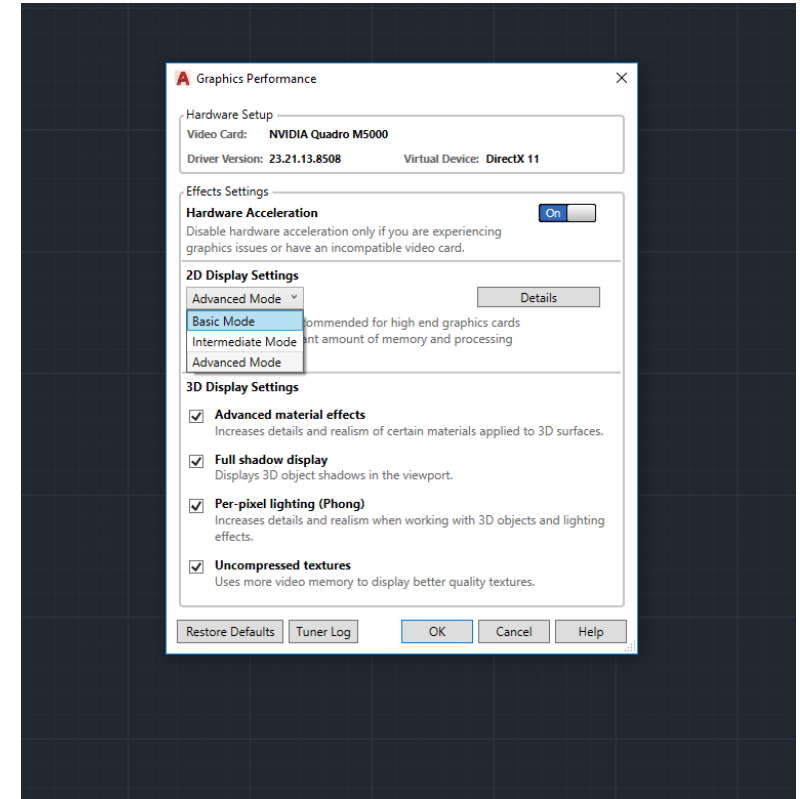
- Basic
- Intermediate
- Advanced

❖ Determined by

- Hardware Capabilities
- Pre-Configured XML
- User

■ Documentation

- [AutoCAD 2019 Help: Graphics Performance Dialog Box](#)



New Features in AutoCAD Mechanical 2019

Refreshed Icons

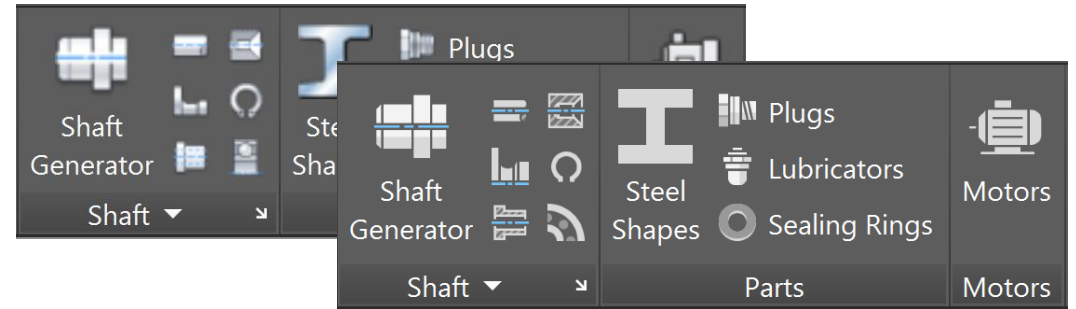
- ❑ Ribbon, Status Bar, Quick Access Toolbar and Application Menu.

Drawing Compare

- ❑ Compare and identify graphical differences between two versions of any drawing.

Shared Views

- ❑ Share designs via a browser with stakeholders within or outside the company without releasing the original drawing files.



New Features in AutoCAD Architecture & MEP 2019

Refreshed Icons

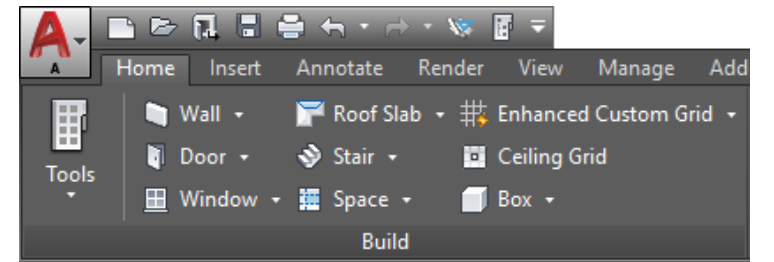
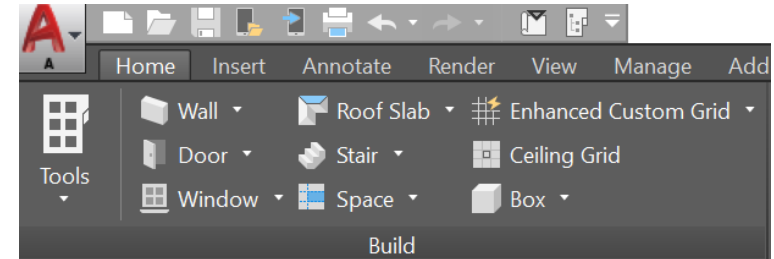
- Ribbon, Status Bar, Quick Access Toolbar and Application Menu.

Drawing Compare

- Compare and identify graphical differences between two versions of any drawing.

Shared Views

- Share designs via a browser with stakeholders within or outside the company without releasing the original drawing files.



New Features in AutoCAD Electrical 2019

Refreshed Icons

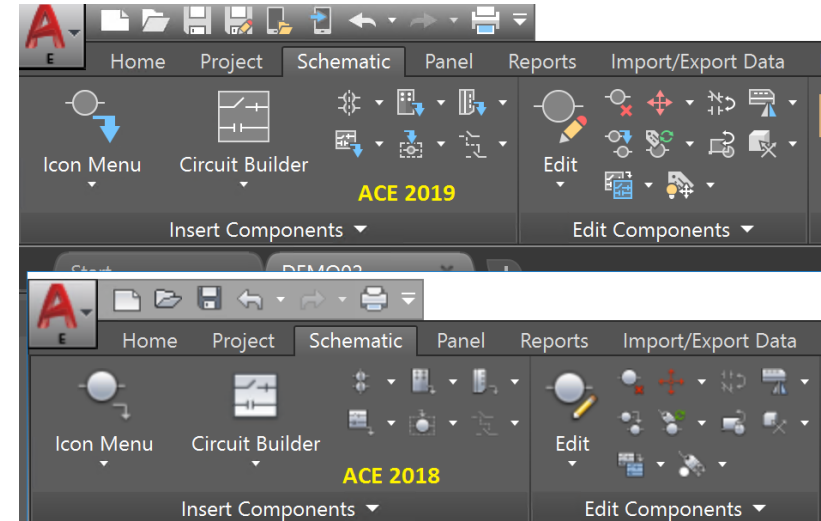
- ❑ Ribbon, Status Bar, Quick Access Toolbar and Application Menu.

Drawing Compare

- ❑ Compare and identify graphical differences between two versions of any drawing.

Shared Views

- ❑ Share designs via a browser with stakeholders within or outside the company without releasing the original drawing files.



**Let's see this in
AutoCAD...**

Thank you for joining us!

knowledge.autodesk.com

- Have more questions or feedback for us?
 - [Ask follow up questions and post future webinar ideas here.](#)
 - Tiny URL: <http://tinyurl.com/mvedtn6>
 - Link is also in the Webinar reminder email
- Or email us directly:
 - apac.webinars@autodesk.com
 - Subject line: **AutoCAD Webinars**

12

A technical discussion hosted by the Autodesk Product Support team and brought to you by Subscription Services. The basic format is a 20 - 40 min period of in-depth topic discussion with questions held during the presentation, where the remainder of the hour is an open question & answer period covering any topics of interest by the audience. Please note that this is a webinar series, and after signing up you will be notified of all future Build Your AutoCAD IQ events.

BUILD YOUR AUTOCAD IQ

The AutoCAD and AutoCAD LT webinar series is designed to showcase time-saving tips and tricks that can be used to immediately increase productivity. This live set of interactive training sessions offers a unique look into some of the most impactful in-product features and functionality that you may not already be familiar with. Ready to see immediate results in your workflow?

[SIGN UP HERE](#)

Erweitern Sie Ihren eigenen AUTOCAD IQ

Die AutoCAD und AutoCAD LT Online Trainings präsentieren Tips und Tricks zur Zeitersparnis, die direkt angewendet werden können, um die Produktivität zu steigern. Diese Serie von interaktiven Trainings Einheiten wird von Ihrem ganz eigenen Autodesk Support Spezialisten moderiert und bietet einen Einblick in einige der wirkungsvollsten Funktionen, mit denen Sie möglicherweise noch nicht vertraut sind. Sind Sie bereit u mittelbare Auswirkungen auf Ihre Arbeitsweise zu spüren? Klicken Sie auf den unteren Registrieren Button!

[MELDEN SIE SICH HIER](#)


SCHEDULED WEBINARS: Thursdays @ 2:00 PM EST / 14:00 CET (additional details with registration)

Title	Date	City	State	Registration
Back to Basics - Duplicating Objects	Feb 26, 2015	Online	Oregon	Register
Beyond the Basics - The Content Explorer	Mar 2, 2015	Online	-	Register
Back to Basics - Setting the Table with Style	Mar 12, 2015	Online	-	Register
Beyond the Basics - Introduction to the CUIx	Mar 19, 2015	Online	-	Register

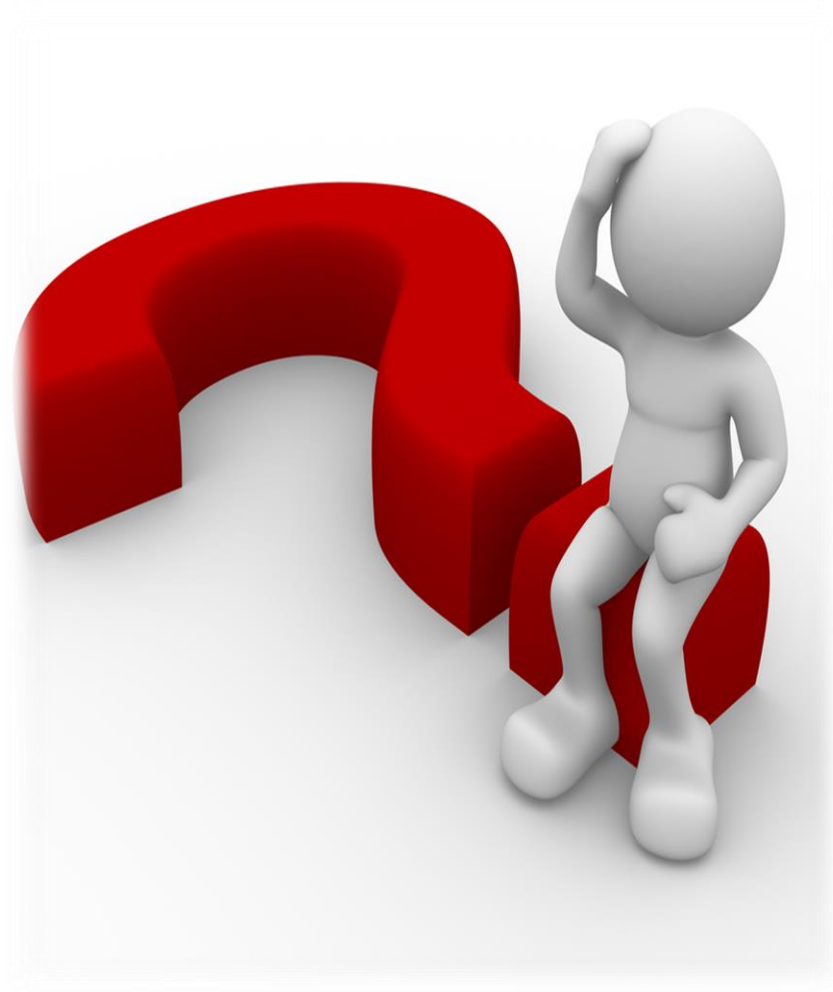
FEEDBACK

We want to hear from you! Interested in learning more about a AutoCAD/AutoCAD LT topic that isn't listed here? Have follow up questions or comments from a previously viewed webinar? Want to inquire about being a guest speaker? Please feel free to drop us a line in our AutoCAD Webinar Feedback post.

PREVIOUS WEBINAR RECORDINGS: Available on YouTube



Q&A





Autodesk is a registered trademark of Autodesk, Inc., and/or its subsidiaries and/or affiliates in the USA and/or other countries. All other brand names, product names, or trademarks belong to their respective holders. Autodesk reserves the right to alter product and services offerings, and specifications and pricing at any time without notice, and is not responsible for typographical or graphical errors that may appear in this document.