

HUNZIKER BETATECH AG

# TACKLING COMPLEX INFRASTRUCTURE PROJECTS WITH BIM WORKFLOWS

For Swiss engineering firm Hunziker Betatech AG, 3D planning tools were vital for meeting the complex legal and technical parameters of designing a more sustainable, cutting-edge water treatment plant in Zurich.

## OUTCOMES

Project planners used integrated BIM workflows to meet demanding technical challenges.



### EFFICIENT USE OF LIMITED SPACE

New plant design uses 65% less space due to higher-capacity purification process



### TIME-SAVING COLLABORATION

300+ coordination tasks completed with BIM 360 before breaking ground, which saved time during construction



### SUSTAINABLE CONSTRUCTION

Project model triples purification output, uses innovative energy sources, and reduces emissions by 170 tons of CO2 per year

“This project could not have been realized without digital 3D planning tools.”

Dominik Börrnert, Head of Digital Planning  
Hunziker Betatech AG

[READ FULL CASE STUDY >](#)

## HOW THEY DID IT

Hunziker Betatech AG's methodology

### THE DIGITAL WORKFLOW

Project planners used integrated BIM tools:



Project site scanned in **ReCap Pro** and imported into Revit



Architecture and structural plans designed in **Revit**



Construction pit designed in **Civil 3D**



Plant model designed in **Plant 3D**



Plans imported to **BIM 360** to generate the project model

## UNIVERSAL ACCESS ON BIM360\*

All teams had access to up-to-date project plans.



Civil engineers



Construction workers



Electrical engineers



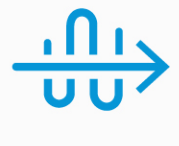
Building operator



Area residents



Saving time by resolving issues before build phase



Streamlining construction of temporary structures to ensure ongoing service

## A LOWER-IMPACT PROJECT

Digital modelling enabled

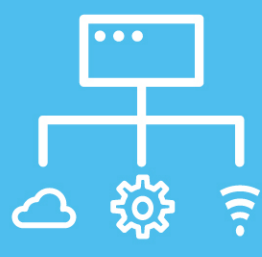
- Proof of feasibility
- More complex construction workflows
- Effective minimization of disturbance to area residents

### 88% Project score

in the “Standard for Sustainable Building Switzerland” thanks to digitalization and contractor collaboration

## THE BOTTOM LINE

Key benefits of using integrated BIM tools for Hunziker Betatech AG



MEETING COMPLEX TECHNICAL CHALLENGES



SOLVING ISSUES BEFORE CONSTRUCTION



CONTINUOUS COLLABORATION OF CONTRACTORS



ACHIEVING SUSTAINABILITY TARGETS

“Only with digital 3D planning tools are we able to efficiently use every centimeter of the construction area and approach the project from its technical and legal angles.”

Dominik Börrnert, Head of Digital Planning, Hunziker Betatech AG

[READ FULL CASE STUDY >](#)



\* BIM 360 Design will be changed to BIM Collaborate Pro in 2021