

PINNACLE INFOTECH:

INNOVATING FOR BETTER ENGINEERED SOLUTIONS

Pinnacle Infotech is a firm delivering BIM engineering services to architects, engineers, and contractors around the world. They are a leader in BIM for seamless collaboration, integrated analysis, and detailing – resulting in better-engineered solutions for the world’s most ambitious building projects.

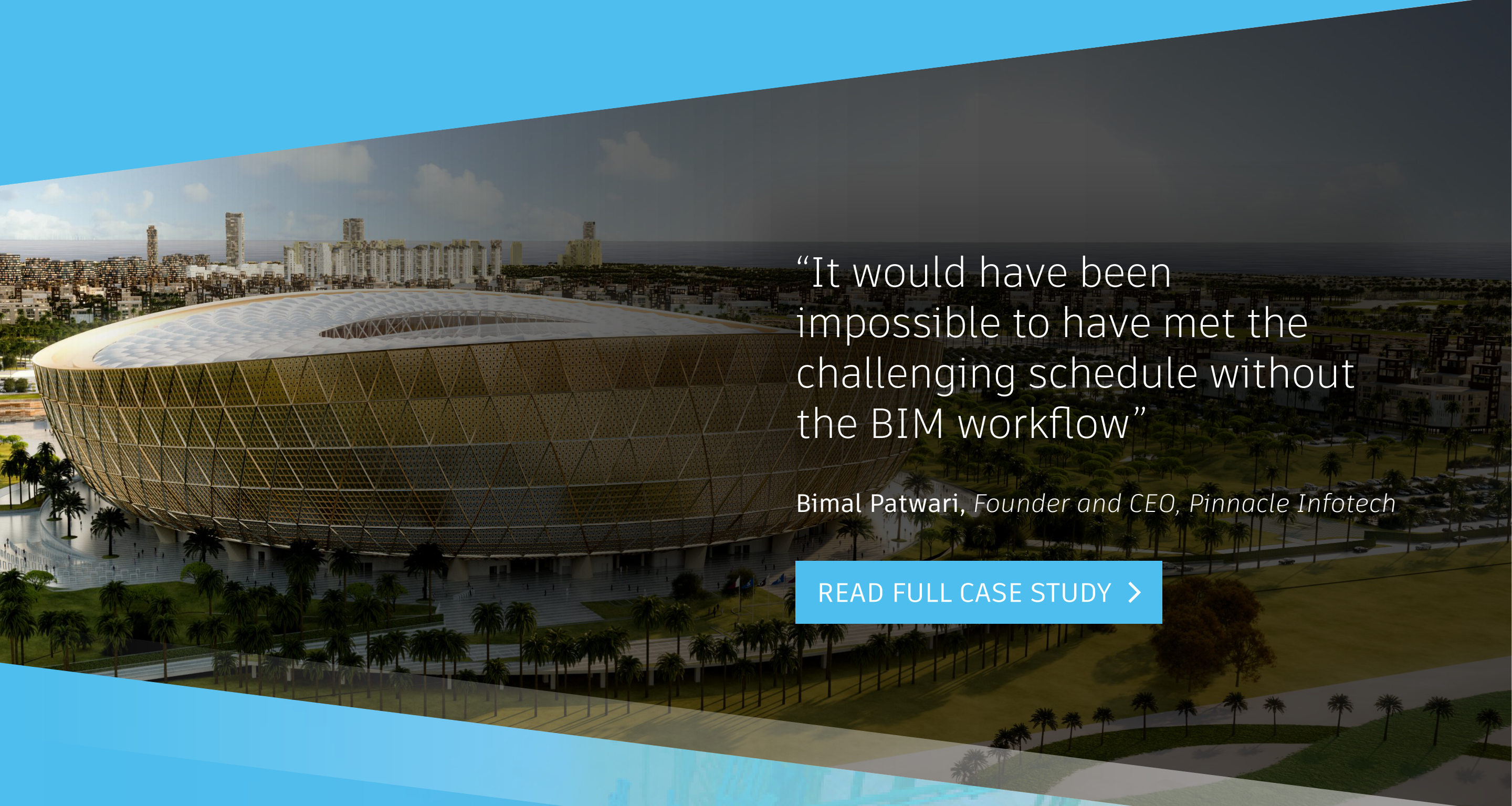
They attribute their success to the adoption of BIM for seamless collaboration. It’s been instrumental on massive projects like the 80,000-seater 2022 FIFA World Cup soccer stadium in Doha, Qatar, which uses drawings generated from a central Autodesk® Revit® model and delivers the drawings using Autodesk® BIM 360 Docs®.

RESULTS

By integrating engineering processes into its BIM workflows, Pinnacle Infotech typically saves

 30-40% IN TIME AND  20% IN COSTS

which it then passes on to its clients.



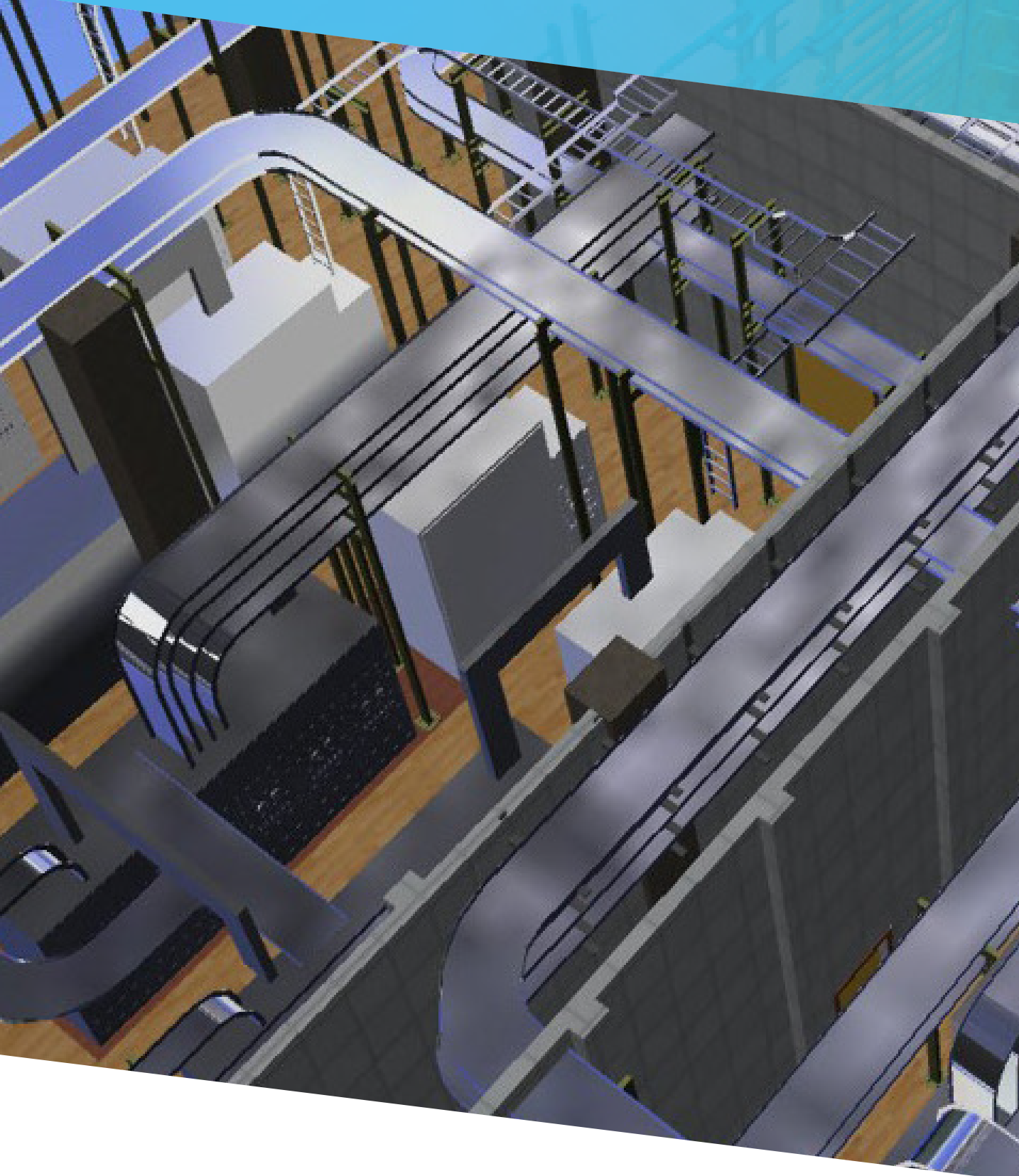
“It would have been impossible to have met the challenging schedule without the BIM workflow”

Bimal Patwari, Founder and CEO, Pinnacle Infotech

[READ FULL CASE STUDY >](#)

HOW THEY DID IT

Pinnacle Infotech’s methodology



CONNECTED DATA, BETTER CONSTRUCTABILITY

Providing immediate access to accurate information

Pinnacle Infotech are using Revit to perform and integrate over 18 different types of analysis and simulation. With the latest and most accurate data, they then work in one coordinated model in BIM 360, which allows them to deliver more constructible designs.

“The beauty of this technology is that now you’re bringing certainty into the construction”

– Bimal Patwari, Founder and CEO, Pinnacle Infotech

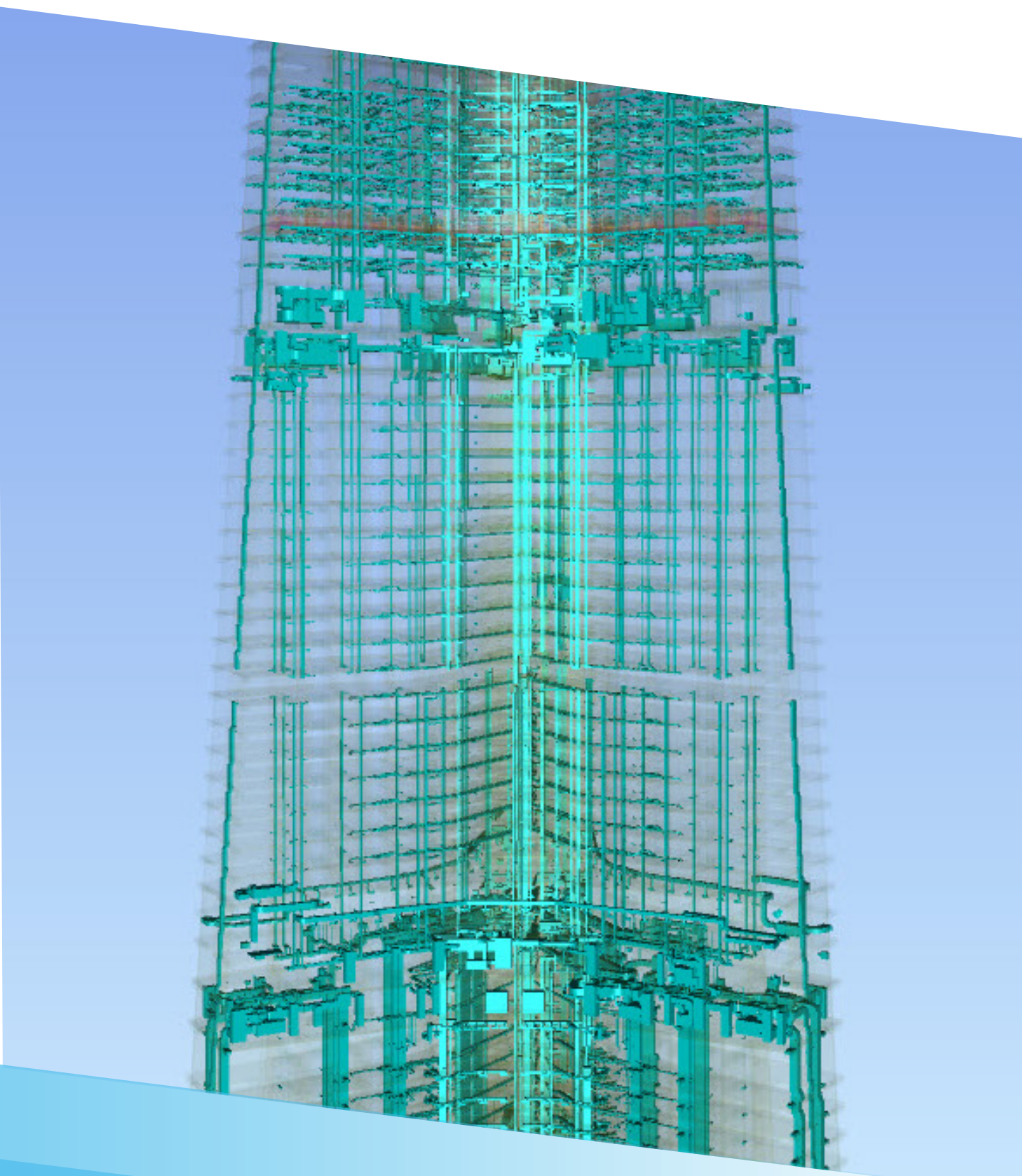
BOOSTING SUSTAINABILITY

Avoiding oversizing and saving materials

By using Revit to analyze the sizing and impact of different materials and equipment, Pinnacle Infotech can reduce necessary materials and electrical loading and lower the building’s energy usage. Not only does this achieve more sustainable projects, but the savings passed on to clients means higher customer satisfaction.

“In several instances, we have shown the client that even 20% lower equipment sizes would work as BIM models have fixed the final routing of ducts and pipes”

– Bimal Patwari, Founder and CEO, Pinnacle Infotech

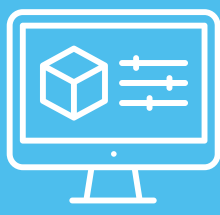


THE BOTTOM LINE

Key benefits of integrated engineering for Pinnacle Infotech



IMMEDIATE ACCESS TO THE LATEST PROJECT INFORMATION



OPTIMIZATION OF MATERIAL QUANTITIES AND EQUIPMENT SELECTION AND SIZING



HUGE PAY OFF DURING CONSTRUCTION PHASE

“Collaborating in a single BIM 360 model and then handing it over to the general contractor to build is already bringing huge benefits. Everybody working in one model from end-to-end BIM, I believe that’s really the future”

Chip Branscum P.E., Director of Engineering, Pinnacle Infotech

[READ FULL CASE STUDY >](#)

