

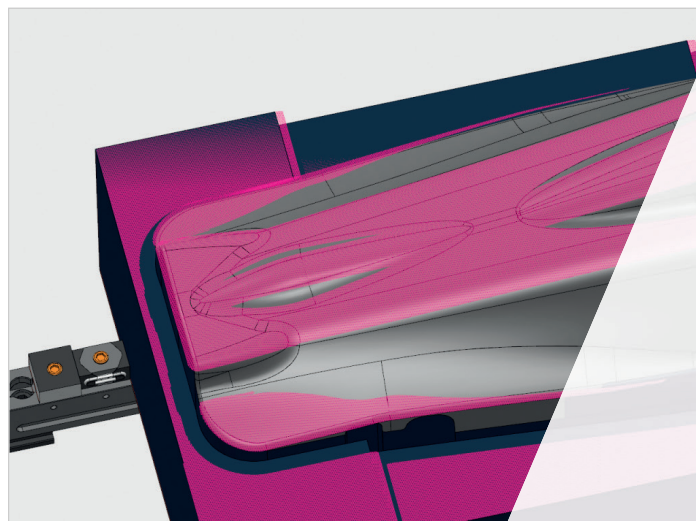
POWERMILL® 2020

The expert high-speed and multi-axis solution

Visit www.powermill.com to find out more

Introducing PowerMill 2020, our expert CAM software just got a whole lot faster

PowerMill 2020 offers significantly faster toolpath calculation, quicker simulation and verification, multi-threaded leads and links, uphill corner finishing, a new model filleting option and more.

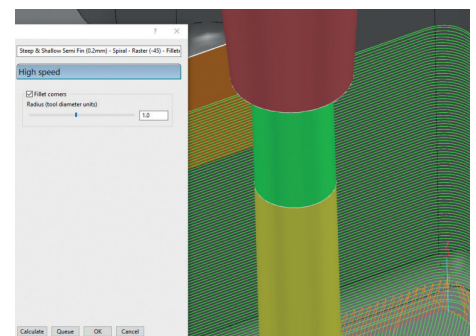
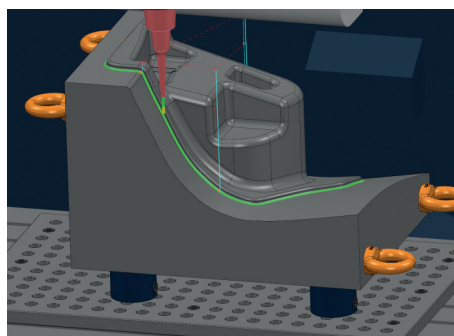
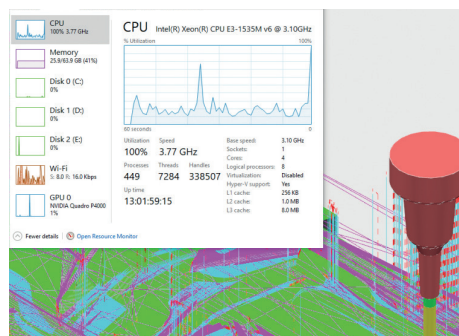


Speed improvements

PowerMill 2020 includes multiple speed-ups that have a significant impact on toolpath calculation, simulation and verification times.

Commonly used toolpath types including: Raster, Corner Finishing, Constant Z, 3D Offset, and Area Clearance can be as much as 67% faster than PowerMill 2019, and often faster than PowerMill 2016.

ViewMill simulations and NC program verification times are now up to 33% faster in 2020 than 2019.



Faster leads and links

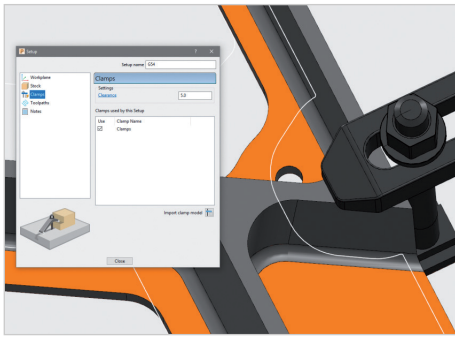
PowerMill makes better use of multi-threads (cores) to calculate leads and links up to 60% faster than PowerMill 2019. This reduces programming times whilst giving CAM programmers greater opportunity to explore alternative solutions and produce more efficient toolpaths.

Uphill corner finishing

A new uphill cutting option produces Corner Finishing toolpaths where steep corners are machined in an upwards direction only. This can improve cutting conditions, reduce the likelihood of cutter vibration, increase tool life and improve surface finish.

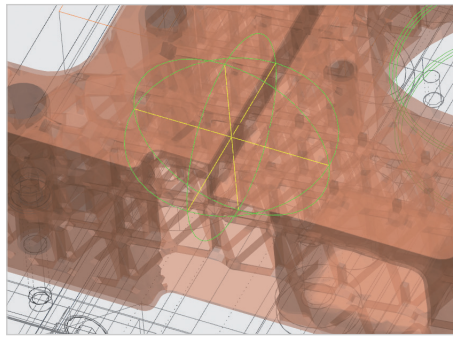
Model filleting

PowerMill can now automatically add fillets to the internal corners of CAD models during the calculation of certain toolpaths. This can help prevent overloading cutting tools and allows CNC machines to achieve programmed feedrates, reducing overall cycle times.



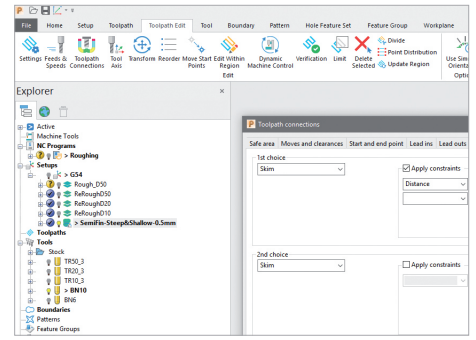
Boundaries in Setups

Boundaries calculated within a machining Setup now take the toolpath clamp settings into account, helping to avoid collisions.



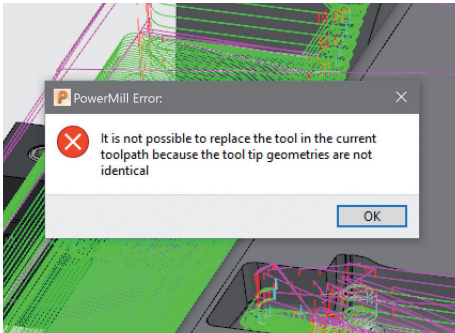
Rotation anchor

The Dynamic Center and Dynamic Cursor options are now supported when the model is displayed as a wireframe and when the graphics window contains few objects.



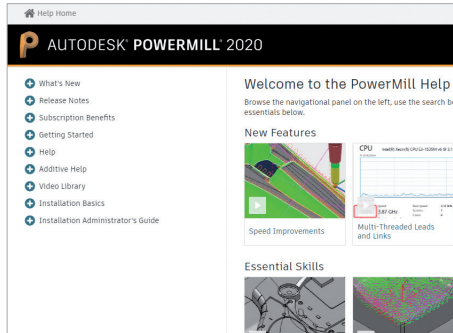
Improved monitor support

PowerMill icons have been enhanced to better support monitors with high DPI settings, such as 4K monitors.



Replacing tools

The ability to replace the tool used by multiple toolpaths within a Setup has been improved to ensure toolpaths are only updated if the tip geometry is the same as the previous tool.



Access help content

Several options on the Help menu are combined to make it easier to access the information you need. See the latest help and getting started documentation online at <http://help.autodesk.com/view/PWRM/2020/ENU/>.

“I had experienced regular problems with other CAM software so choosing PowerMill was a no-brainer. The 5-axis simulation and verification tools help me sleep at night.”

– Marius Pantea
Production Manager
RM Design and Engineering

Make Great Products

Autodesk manufacturing software helps you make better quality products, faster. Machine, print, inspect, and fabricate parts efficiently.

- Complete modular manufacturing solutions – CAM, additive, composites
- Manufacturing expertise to automate, optimize and integrate your manufacturing processes, in addition to your software
- Cloud-connected so you can collaborate and manufacture anytime, anywhere.

Learn more at www.autodesk.com/MAKE.