

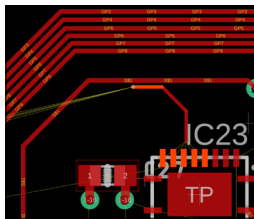
Top Benefits of Using Fusion for PCB Design



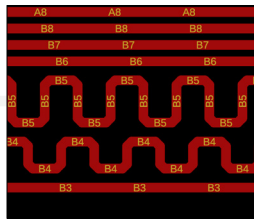
Autodesk® Fusion integrates electronic and mechanical design, boosting collaboration and speeding up PCB development.

1. Powerful and intuitive PCB design tools

Fusion Electronics simplifies circuit design with integrated tools for designing schematics, PCB layout, and 3D modeling. Transition seamlessly between 2D and 3D to optimize circuit performance and deliver high-quality designs.



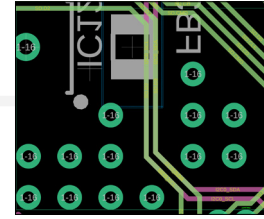
Assisted routing



Automated group meandering



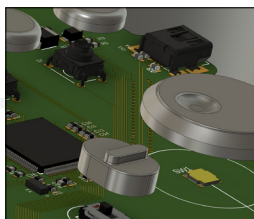
Advanced design rules



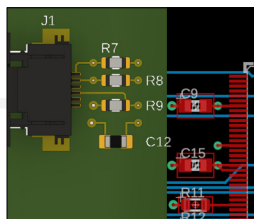
Via stitching

2. Unified ECAD/MCAD workflows

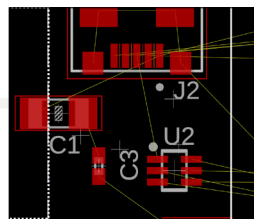
Seamlessly integrate electromechanical workflows to eliminate potential data translation issues, minimize manual workflows, and reduce costly and time-consuming errors.



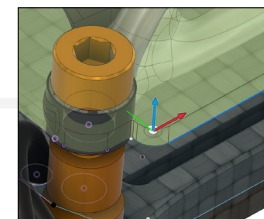
No file conversion needed



2D/3D component synchronization



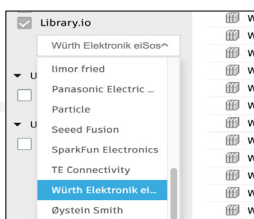
Component alignment across designs



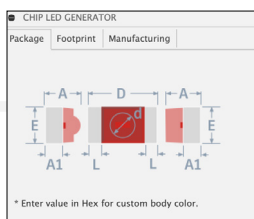
Board shape adoption for PCB fit

3. Comprehensive component libraries

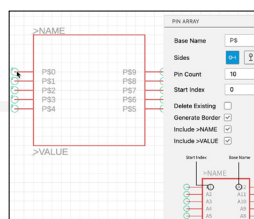
Access extensive, customizable libraries with components from trusted manufacturers, or create your own using IPC-compliant calculators. Fusion's tools ensure seamless integration into your designs.



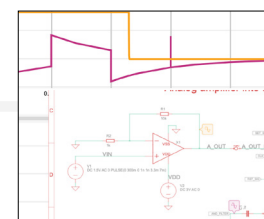
Manufacturer-managed libraries



IPC-compliant component calculator



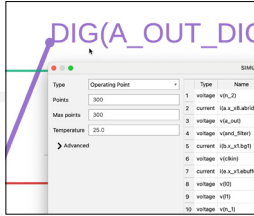
Array tools for symbol creation



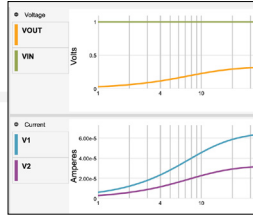
SPICE model assignments

4. Integrated performance insights

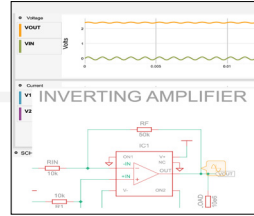
Analyze and simulate electronic circuit systems within the same platform to gain performance insights that reduces the need for external testing tools or prototyping.



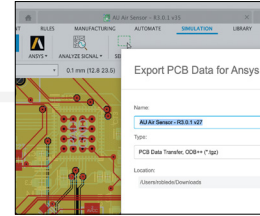
SPICE Operating Point (O.P.)



SPICE AC and DC sweep



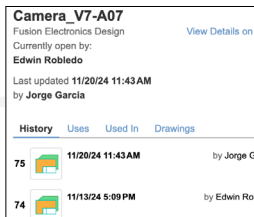
SPICE transient analysis



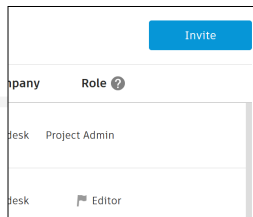
Export to 3rd-party applications

5. Connected data management

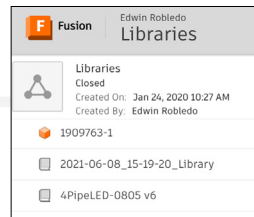
Ensure real-time data sharing with features like automatic version control, user permissions management, and automatic data backups, to break down silos for improved collaboration and decision-making.



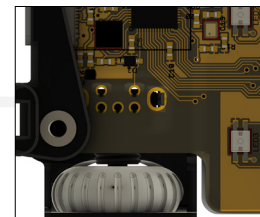
Design version control



Stakeholder access control



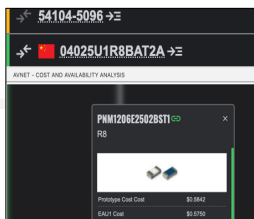
Library and design sharing



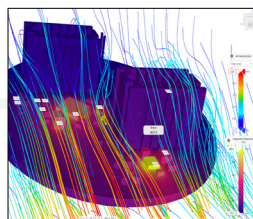
Integration to Fusion CAD, CAM, and CAE

6. Unlock efficiency through embedded partner access

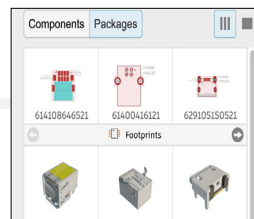
Streamline design performance, include supply chain insights, and move to manufacturing with integrated connection with third-party tools and capabilities.



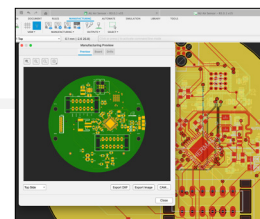
Source and evaluate design components



Connect with in-depth analysis tools



Explore new or existing components



Preview PCB Manufacturing

Are you ready to try Autodesk Fusion for your next electronics project?



Try Fusion free for 30 days