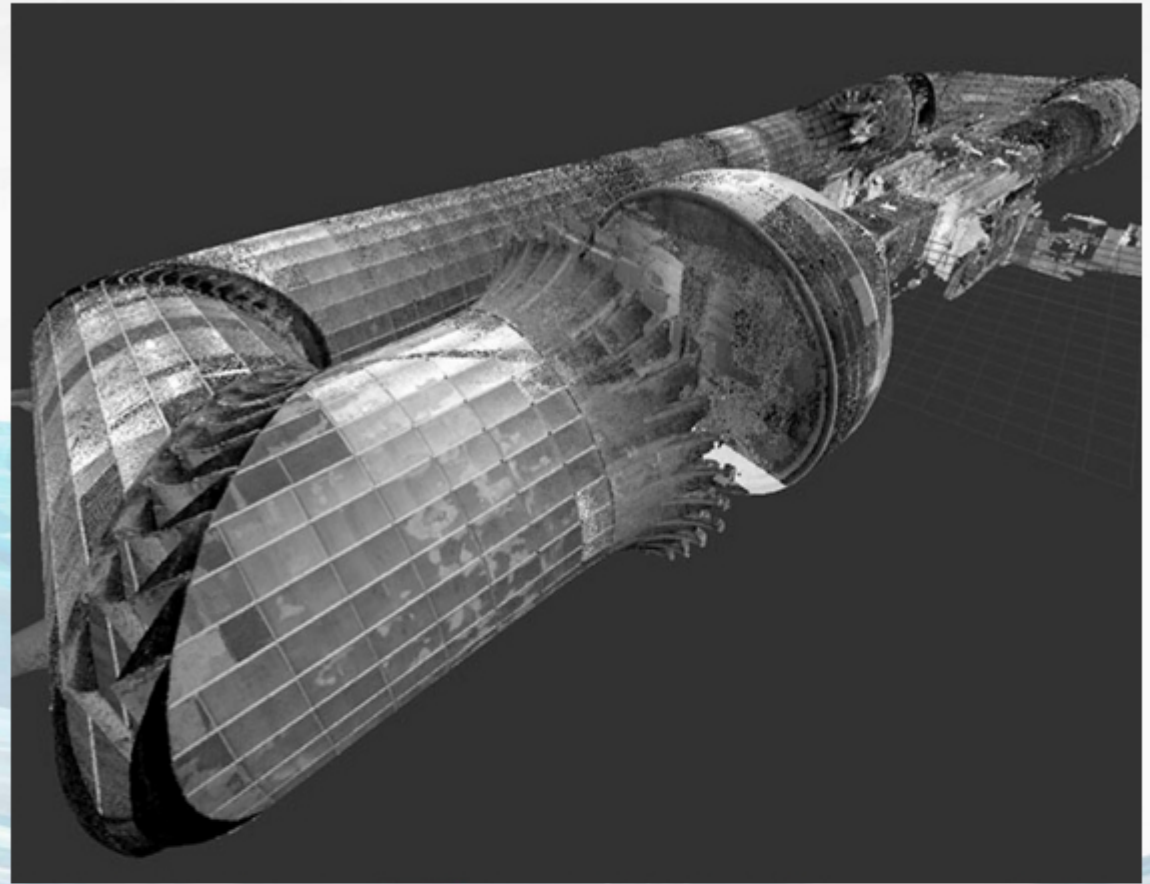


“Autodesk ReCap has allowed us to minimize user interaction saving us time with target-less registration. What once took 16 weeks of work is now done in 4 weeks. ReCap has been a key factor in reducing the time spent on the overall workflow.”

JASON HALL,
MEASUREMENT SPECIALIST
NASA



The **Hypersonic Facilities Complex**, originally named the **Gas Dynamics Laboratory**, was the NACA's earliest installation with multiple Hypersonic wind tunnels. The various tunnels utilized air and, later, specific gasses, particularly helium and nitrogen, to investigate aerodynamic and aerothermodynamic problems in flight regimes above the speed range of Mach 5. The facility's core tunnels have been blowdown-type tunnels powered by common differential-pressure systems.

Results

- Accurately captured the as-built of complex 1247
- Dramatically reduced total workflow from 16 weeks to 4 weeks
- Target-less onsite registration conducted during scanning made it quick and easy
- Undesirable points were “cleaned” from scan
- Produced deliverables to be used in downstream workflows

ACHIEVED WITH

- Faro Focus 3D Laser Scanner
- Autodesk ReCap Pro
- Autodesk Revit
- Process Steps
 - 1,544 laser scans
 - Targetless
 - Modeling of steel structure and other architectural elements in Revit
- Deliverables: Files for downstream workflows