



## Exam Guide for Autodesk Certified Professional in AutoCAD for Design and Drafting (beta)

Congratulations on taking the next step towards earning your Autodesk Certification!

The purpose of this guide is to help prepare you for the Autodesk Certified Professional in AutoCAD for Design and Drafting beta exam. Review this document carefully to better understand the requisites needed to prepare for this exam. Further details about the beta exam can be found in our [Beta exam FAQs](#).

**Note:** You won't have access to the software during the exam, as all questions are in a selected response format and are designed to be answered without the software user interface. Learn more about our exam format and question types in our [Autodesk Certification FAQs](#). The sample test questions below give you a preview of the question types you will find on the certification exam.

### Prerequisites skills

The Autodesk Certified Professional in AutoCAD for Design and Drafting beta exam is intended for students and industry professionals who possess leading edge knowledge and skills in AutoCAD. This industry validated certification created by Autodesk is intended for AutoCAD users who have mastered associated workflows, processes, and project objectives, in an academic program or professional environment.

We recommend candidates possess proficiency in the core AutoCAD skills outlined below prior to taking this exam.

It's expected that all candidates will already know how to:

- Understand and apply drafting concepts and standards.
- Navigate the user interface and create basic customizations.
- View and navigate drawings.
- Link and reference external files and data.
- Set up and manage drawings.
- Create and modify geometry and objects.
- Use tools for precision drawing.
- Annotate designs.

- Organize drawings.
- Use collaboration tools.
- Produce layouts, prints, and other output files.

## Beta exam information

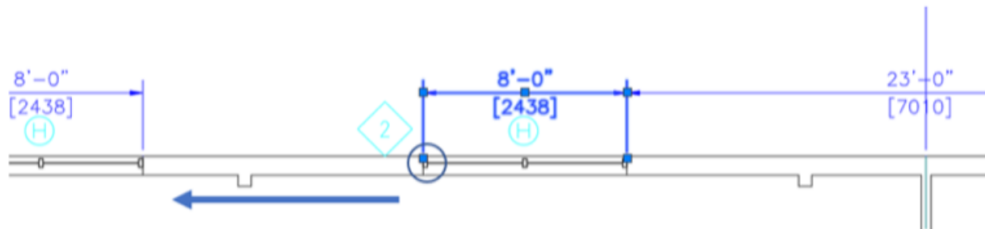
Total time required for beta exam: 150 minutes

## Sample questions

Here are samples of question types you'll encounter on the exam:

1. **Multiple choice (single answer select):** This item measures a candidate's ability regarding a specific content topic. A multiple-choice item has a stem which asks a question and provides multiple possible answers. Only one answer is correct .

Refer to exhibit.



A CAD designer selects the bottom grip of a dimension as shown and moves the extension line to the left. How does this affect the selected dimension?

- ☐ A) The entire dimension moves and the dimension value remains the same.
- ☐ B) The extension line adjusts to the new location and the dimension value updates.
- ☐ C) The extension line adjusts to the new location and the dimension value remains the same.
- ☐ D) The dimension becomes oblique and the dimension value updates.

### Answer key

- B

2. **Multiple choice multi-select (multiple answer select):** This item measures a candidate's ability regarding a specific content topic. A multiple-choice item has a stem which asks a question and

provides multiple possible answers. The candidate is asked to provide more than one answer as correct.

When using Clipboard > Paste as Block to create a new block, how will this block appear in the drawing? (Select two.)

- ☐ A) Unnamed
- ☐ B) Automatically exploded
- ☐ C) Automatically inserted at 0,0,0
- ☐ D) Never exploded
- ☐ E) Automatically inserted using a point

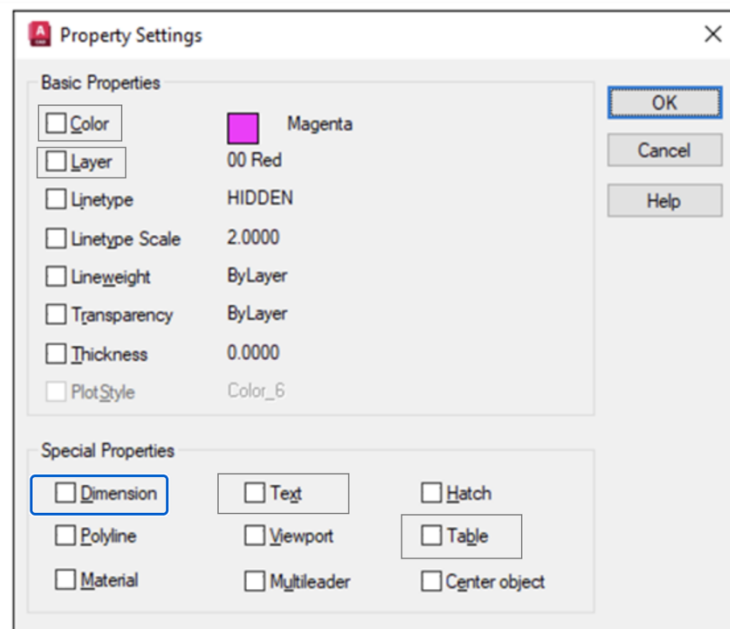
### Answer key

- A, D

3. **Hot Area:** This item measures the ability to answer a question by clicking on “hot” areas of an exhibit. Hot area items are essentially multiple-choice items with graphical answer choices.

A CAD designer uses the MATCHPROP command to change all the dimension annotations on an object. Which properties should have a check mark by them to match only the dimension style and layer properties? (Select two.)

### Answer Area



### Answer key

- Layer, Dimension