



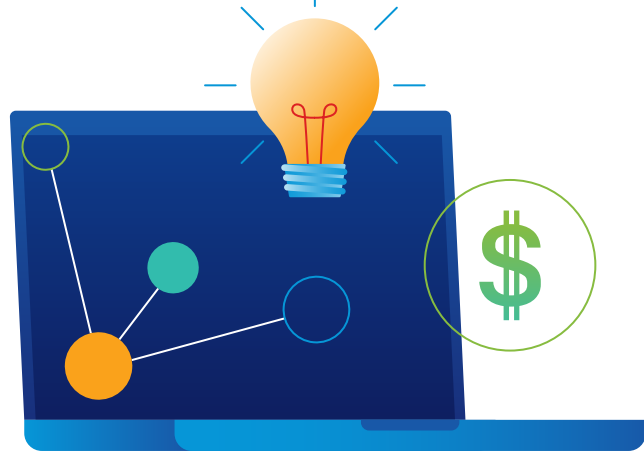
Autodesk Foundation supports the design and creation of innovative solutions to the world's most pressing social and environmental challenges.

The Global Challenge

Climate change and inequality are the world's biggest problems, exacerbated by a planet soon to be inhabited by 10 billion people.

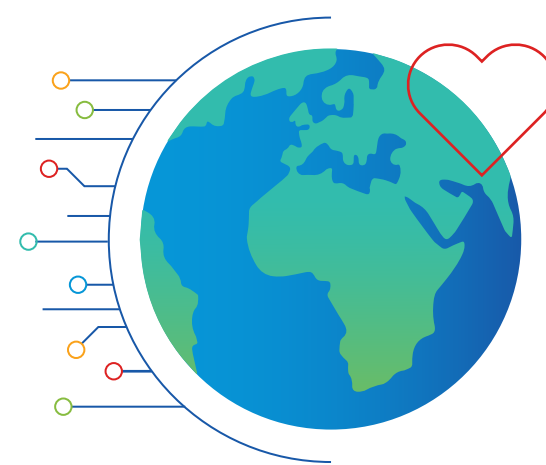
///

Innovative organizations are solving these challenges, but they need risk-tolerant capital and in-kind support to scale.



Our Solution

We provide a unique blend of funding, software donations, and capacity building to help bring early-stage, transformative technologies to market.



Our Philosophy

We believe technology can be a powerful force for good, but humans must have the agency and foresight to use technology for the betterment of society.

A Fresh Approach to Philanthropy

Autodesk Foundation invests risk capital in entrepreneurship and innovation, particularly at the early stages of an organization's development, where our resources can have the greatest effect.

///



We embrace both nonprofit and for-profit models, utilizing grants and impact investment structures.



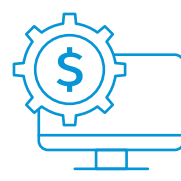
We provide flexible funding, often with unrestricted grants, to enable enterprises to grow in an agile way.

In the last five years, Autodesk Foundation has provided:

\$20 million to **60+** organizations globally that are helping solve climate change and inequality



14% low carbon innovation
73% resilient communities
13% future of work



\$115 million in software donations



130,000 employee volunteer hours supporting **1,500+** organizations globally

Our Focus Areas

We work across three primary impact areas to support entrepreneurs and ecosystem builders addressing climate change and inequality.

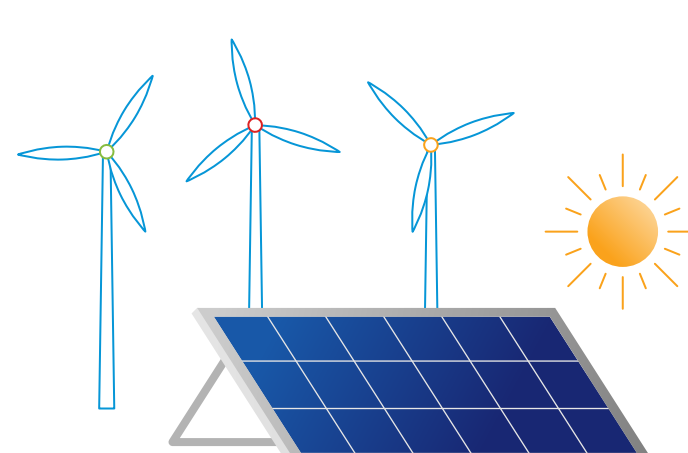
///

① Low Carbon Innovation

Less than **2%** of all philanthropic dollars globally are directed toward combating climate change. Autodesk recognizes that investments in new technologies are vital to reverse the worst effects of climate change.¹



Based on today's 2050 trends, roughly **70 gigatons** of CO₂ need to be abated annually to prevent the planet from warming more than 1.5°C.²



Autodesk Foundation's goal is to accelerate the adoption of low-carbon technologies that decouple economic growth from greenhouse gas emissions.

The Autodesk Foundation portfolio has collectively:



Invested
\$100 million in capital



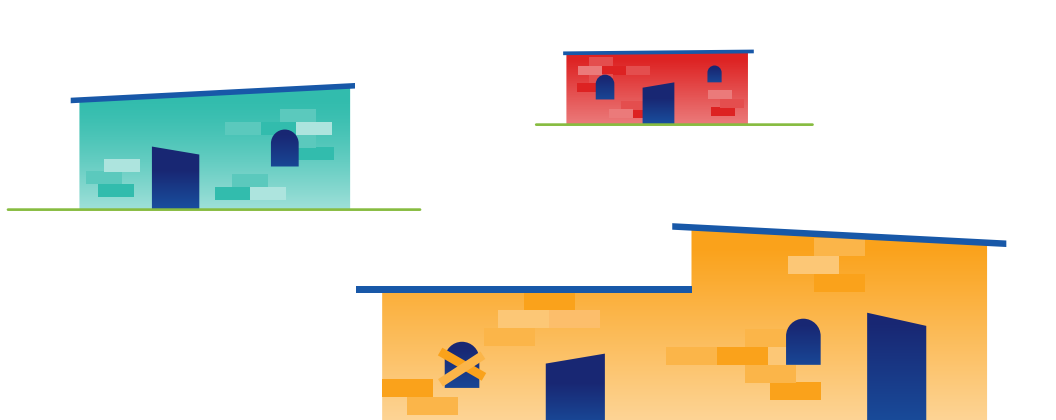
Abated
67,500 metric tons of CO₂



Potential to abate
11 gigatons of CO₂

② Resilient Communities

Climate impacts could push an additional **100 million** people into poverty by 2030.³



Autodesk Foundation aims to improve resilience in communities most vulnerable to climate change through investments in:



Built Environment



Agriculture



Water/Sanitation

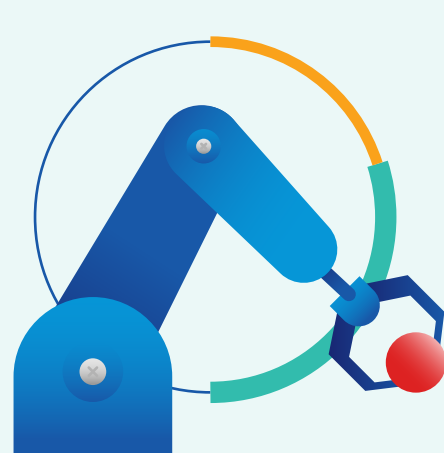


Energy Access

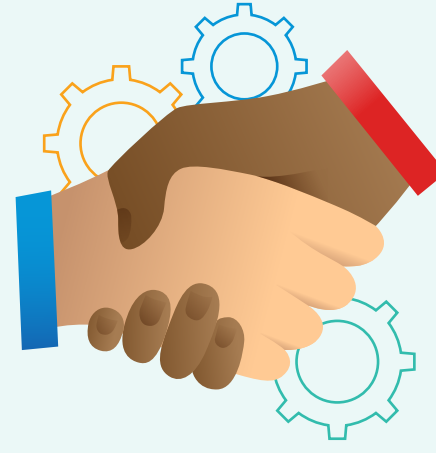


22 organizations funded—our oldest area of investment

③ Future of Work



20-50% of jobs in the U.S. may be susceptible to automation.⁴



Autodesk Foundation is preparing for workforce transitions by supporting organizations that help people prosper in the era of automation.



8 organizations funded—our newest area of investment